

# Vaccine Uptake in Children in Wales January to March 2017

COVER 122: Wales May 2017



## Key points

- For children at one year of age, uptake of all routine immunisations exceeded 95% this quarter. Uptake of three doses of the “5 in 1” vaccine was 95% or higher in all seven Health Boards (HB) and in 18 Local Authority (LA) areas.
- Uptake of two doses of rotavirus vaccine increased to 95% this quarter, compared to 94% in the previous quarter. Three HBs and 12 LA areas had an uptake above 95%.
- Uptake of the first dose of MMR vaccine in two year old children increased to 95% this quarter. Four HBs and 16 LA areas achieved an uptake of 95% or over.
- The proportion of children up to date with all routine immunisations by four years of age decreased to just below 85% this quarter compared to 86% in the previous quarter. For children reaching their fifth birthday this quarter 89% were up to date.
- Uptake of the second MMR dose by five years of age decreased slightly to 90%, whilst uptake of the “4 in 1” pre-school booster remained stable at 93%.
- Vaccination sessions for the first dose of the Human Papillomavirus (HPV) vaccine schedule in girls in the 2016-17 School Year 8 (12-13 year olds) and School Year 9 (13-14 year olds) are currently underway. HPV vaccination uptakes presented in this report will continue to increase over the next two quarters as more vaccination sessions take place.
- The MenACWY vaccine catch-up programme for school aged-children is ongoing. Coverage of MenACWY vaccine in the 2015-16 routine Year 9 cohort, now in Year 10 remained stable at 80%, and coverage in the 2015-16 school Year 11 cohort, now in Year 12 (16-17 year olds) remained stable at 78%. In the 2016-17 School Years 9 and 11, uptakes are currently 37% and 67% respectively.
- Coverage of one dose of MMR vaccine in the 2016-17 School Year 10 was 93% and coverage of a completed two dose course was 87%.
- Coverage of the Td/IPV teenage booster in the 2016-17 School Year 10 was 83%.

## Background

These results are for children living in Wales in March 2017 and reaching their first, second, fourth, fifth and 16<sup>th</sup> birthdays during the quarter 01/01/2017 to 31/03/2017. Uptake of key immunisation in older children, which are mainly provided through school based programmes in all areas other than Cardiff and Vale University Health Board, are presented as school year cohorts (children reaching their 14<sup>th</sup>, 15<sup>th</sup> and 16<sup>th</sup> birthdays between 01/09/2016 and 31/08/2017). Current uptake of HPV vaccination<sup>1</sup> dose 1 in girls in the 2016-17 School Years 8, 9 and 10 is also presented. All of these school year groups will have been on the new, two dose HPV vaccine schedule. BCG and hepatitis B immunisation uptake data are also presented here. These immunisations are given selectively following risk assessment (further information can be found in: Immunisation Against Infectious Disease, available from <http://immunisation.dh.gov.uk/category/the-green-book/>). Coverage of neonatal hepatitis B immunisation is presented here, using data from the Public Health Wales Neonatal Hepatitis B database.

MenACWY conjugate vaccine uptake figures for teenagers and young adults born from 01/09/1996 to 31/08/1999, vaccinated as part of the general practice-based catch-up campaign are available from: <http://www.wales.nhs.uk/sitesplus/888/page/88528>

<sup>1</sup> HPV vaccination protects girls against cervical cancer associated with HPV types 16 and 18.

## Findings

1. Uptake of all three doses of the combined “5 in 1” DTaP/IPV/Hib<sup>2</sup> vaccine, scheduled at 2, 3 and 4 months of age, in children reaching their first birthday remained stable this quarter at 96.3%. Uptake ranged by HB from 95.6% (Cardiff and Vale University HB) to 97.3% (Cwm Taf University HB) and by LA from 93.9% (Wrexham) to 99.0% (Neath Port Talbot). All seven health boards and 18 of the 22 LA areas achieved the target 95% uptake (Figures 2 and 5, Tables 2 and 3).
2. National uptake of a completed one dose course of MenC vaccine in children reaching their first birthday this quarter was 88.6% [1]. From the 1<sup>st</sup> July 2016 infants were no longer offered the MenC vaccination at 12 weeks of age. This group of children was the last to be offered routine MenC vaccine at this age and lower uptake may reflect limited catch-up following this change to the universal childhood immunisation schedule..
3. Uptake of a complete two dose primary course of pneumococcal conjugate vaccination (PCV2<sup>3</sup>) in children reaching their first birthday was 96.5% this quarter compared to 96.2% last quarter, ranging by LA from 94.9% (Cardiff) to 98.8% (Blaenau Gwent and Anglesey). All seven HBs and 21 of the 22 LA areas achieved the target 95% uptake (Figures 1 and 2, Table 3).
4. Uptake of two doses of MenB vaccine, scheduled at two and four months of age, in children reaching their first birthday increased to 96.1% this quarter compared to 95.4% last quarter. Uptake in health boards ranged from 93.5% (Powys Teaching HB) to 97.3% (Cwm Taf University HB) and ranged by LA from 93.5% (Powys) to 98.8% (Anglesey) (Figure 2, Table 3).
5. Uptake of two doses of rotavirus vaccine in children reaching their first birthday increased to 95.1% this quarter compared to 94.3% last quarter. Uptake in HBs ranged from 92.4% (Powys Teaching HB) to 96.8% (Cwm Taf University HB) and ranged by LA from 92.0% (Pembrokeshire) to 97.8% (Merthyr Tydfil) (Figure 2, Tables 2 and 3).
6. Uptake of the first dose of MMR<sup>3</sup> in children reaching their second birthday (scheduled at 12 to 13 months of age) increased to 95.1% this quarter compared to 94.7% last quarter. Uptake ranged by health board from 92.3% (Hywel Dda University HB) to 96.8% (Cwm Taf University HB) and by LA area from 90.9% (Pembrokeshire) to 97.1% (Denbighshire and Rhondda Cynon Taf) (Figures 1, 2 and 6, Tables 2 and 4). Four HBs and 16 LA areas achieved the target of 95% uptake.
7. Uptake of the final dose of Pneumococcal Conjugate Vaccine (PCVf, scheduled at 12 to 13 months of age) in children reaching their second birthday was 95.4% this quarter compared to 95.1% last quarter. Uptake by LA ranged from 91.2% (Pembrokeshire) to 97.5% (Denbighshire) (Figure 2, Tables 2 and 4). Four HBs and 16 LA areas achieved an uptake of 95% or over.
8. Uptake of the Hib/MenC booster (given at 12 to 13 months of age) in children reaching two years of age remained stable at 94.6% this quarter, compared to 94.3% last quarter. Uptake ranged by health board from 92.6% (Hywel Dda University HB) to 96.4% (Cwm Taf University HB), and ranged by LA from 90.9% (Pembrokeshire) to 97.0% (Anglesey) Four health board and ten LA areas achieved uptakes in excess of 95% (Tables 2 and 4, Figures 1 and 2).
9. In children reaching four years of age this quarter, uptake of the “4 in 1” DTaP/IPV<sup>4</sup> pre-school booster decreased to 87.8%, compared to 88.7% last quarter. Coverage of the Hib/MenC booster is currently 93.9% and uptake of two doses of MMR was 86.0% (Table 5). The proportion of children who were up to date with all these routine immunisations at four years of age decreased to 84.9% this quarter, compared to 85.7% last quarter. This ranged by health board from 81.5% (Aneurin Bevan University HB) to 88.6% (Betsi Cadwaladr UHB)

---

<sup>2</sup> DTaP/IPV/Hib vaccine protects against Diphtheria, Tetanus, Pertussis (Whooping Cough), Polio and Hib infection.

<sup>3</sup> MMR protects against measles, mumps and rubella infections.

and by LA from 75.6% (Newport) to 91.5% (Anglesey) (Figure 3, Tables 1, 2 and 5). The proportion of children who were up to date with the above immunisations by their 5<sup>th</sup> birthday remained stable at 88.7% this quarter, compared to 88.8% last quarter. This ranged by health board from 84.3% (Powys Teaching HB) to 92.5% (Cwm Taf University HB) (Table 6). There has been an improvement of 2.5% in the proportion up to date in these children since we reported on them, aged 4 years, this time last year.

10. In children reaching five years of age this quarter, coverage of one dose of MMR is currently 97.3%. Uptake of two doses of MMR was 90.4% this quarter, compared to 90.7%, last quarter (Table 7). Uptake of two doses of MMR ranged by health board from 86.8% (Powys Teaching BH) to 93.4% (Cwm Taf University HB) and by LA from 83.7% (Newport) to 93.4% (Ceredigion) (Figures 1 and 2, Tables 2, 6 and 7).
11. Uptake of the “4 in 1” DTaP/IPV<sup>5</sup> pre-school booster in children reaching their fifth birthday remained stable at 93.1% this quarter compared to 93.2% in the previous quarter, ranging by health board from 90.4% (Powys Teaching HB) to 95.8% (Betsi Cadwaladr UHB) and by LA from 89.3% (Newport) to 98.6% (Anglesey) (Tables 2 and 6). Two of the seven health boards, and eight of the 22 LAs achieved the 95% uptake target (Figure 8).
12. Uptake of the first dose of HPV vaccine for girls in the 2016-17 School Year 8 group (turning 13 years of age during 01/09/16 to 31/08/17) is currently 41.5%. Coverage of the first dose in the 2016-17 School Year 9 is currently 86.7% and uptake of the second dose in this age group is currently 38.7% (Table 8). Timings of school vaccination sessions vary throughout the year and vaccination sessions for girls in the 2016-17 School Year 8 group (dose one) and 2016-17 School Year 9 (dose two) are currently underway. Uptake will increase over the next two quarters as more vaccination sessions take place. Coverage of a complete two dose course of HPV vaccine in 2016-17 school year 10 girls (girls reaching their 15<sup>th</sup> birthday during 01/09/16 to 31/08/17) is currently 85.8% (Table 8).
13. The MenACWY conjugate vaccine was introduced in September 2015 replacing the single antigen meningococcal C teenage booster that was previously given to children in School Year 9 [2]. A phased catch up campaign was also introduced for older children with those aged 16 years (School Year 11) being vaccinated in school and those aged 17 to 19 being vaccinated in general practice. Current uptake of the MenACWY vaccine in the 2016-17 School Year 9 routine cohort is currently 36.9% (Table 9 and Table 10). Coverage in the in the 2016-17 School Year 10 group, the first Year 9 routine cohort to be offered the new vaccine is currently 80.0% (Table 9 and Table 11). Current uptake of the MenACWY vaccine in the 2016-17 School Year 11 catch-up cohort is 67.1% (Table 9 and Table 12). Coverage in the in the 2016-17 School Year 12 group, the first catch-up cohort to be offered the new vaccine in Year 11 is currently 78.2% (Table 9).
14. Uptake of the Td/IPV<sup>6</sup> teenage booster in the 2016-17 School Year 9 group (children reaching 14 years of age) was 36.5%. Uptake will increase over the next two quarters as more vaccination sessions take place. Coverage of two doses of MMR in this year group is currently 87.9% and coverage of one dose is 92.9%. Coverage of two doses of MMR vaccine ranges by health board from 78.3% (Powys Teaching HB) to 90.2% (Betsi Cadwaladr University HB). Coverage of a full course (two doses of MMR) of immunisation against rubella in 14 year old girls in this school year group is currently 88.3% (Table 10).
15. Coverage of the Td/IPV teenage booster in the 2016-17 School Year 10 group (children reaching 15 years of age) is currently 82.7%. Coverage ranges by health board from 72.7% (Cardiff and Vale University HB) to 91.0% (Cwm Taf University HB). Coverage of two doses of MMR in this year group is currently 87.4% and coverage of one dose is 92.6%. Coverage of two doses of MMR vaccine ranges by health board from 82.3% (Powys Teaching HB) to 90.5% (Betsi Cadwaladr University HB). Coverage of a full course (two doses of MMR) of

---

<sup>5</sup>DTaP/IPV (and dTaP/IPV) vaccines boost protection against Diphtheria, Tetanus, Pertussis and Polio infection before school entry.

<sup>6</sup>Td/IPV boosts protection against Diphtheria, Tetanus and Polio infection before entering adulthood.

<sup>7</sup>BCG protects against tuberculosis infection. Numbers of eligible children for BCG are not known.

immunisation against rubella in 15 year old girls in this school year group is currently 88.1% (Table 11).

16. Coverage of the Td/IPV teenage booster in the 2016-17 School Year 11 group (children reaching 16 years of age) is currently 84.1%. Coverage ranges by health board from 75.6% (Cardiff and Vale University HB) to 91.7% (Cwm Taf University HB). Coverage of two doses of MMR in this year group is currently 88.1% and coverage of one dose is 93.3%. Coverage of two doses of MMR vaccine ranges by health board from 83.1% (Powys Teaching HB) to 89.9% (Betsi Cadwaladr University HB). Coverage of a full course (two doses of MMR) of immunisation against rubella in 16 year old girls in this school year group is currently 88.9% (Table 12).
17. Coverage of two doses of MMR in children reaching 16 years of age this quarter (between 1<sup>st</sup> January 2017 and 31<sup>st</sup> March 2017) is 87.2%, compared to 88.7% in children reaching this age during the previous quarter. Coverage of one dose of MMR is 92.7% this quarter, compared to 93.6% last quarter. Coverage of a full course (two doses of MMR) of immunisation against rubella in 16 year old girls this quarter is 87.5% this quarter compared to 89.4% last quarter. National coverage of the Td/IPV teenage booster in children reaching 16 years of age remained at 83.8% this quarter, compared to last quarter (Table 2 and 13).
18. Uptake of BCG<sup>o</sup> immunisation is presented in Table 14. These data are based on BCG immunisations recorded in the National Community Child Health Database. BCG immunisation has been received by 6.0%, 8.4%, 6.8% and 4.3% of children reaching their first, second, fifth and 16<sup>th</sup> birthdays (respectively) during quarter one of 2017. This quarter Newport LA had the highest proportions of children given BCG by one year of age (13.5%) and Cardiff LA had the highest proportions at two years of age (23.1%).
19. Uptake data for hepatitis B immunisation, extracted from the Public Health Wales All Wales Neonatal Hepatitis B immunisation database, is presented in Table 15. Uptake of three doses of hepatitis B vaccine in children who were at risk of perinatal infection and reached their first birthday this quarter was 100%. Uptake of four doses of hepatitis B vaccine in children who were at risk of perinatal infection and reached their second birthday this quarter was 90.9%. Uptake of four doses of hepatitis B vaccine in children who were at risk of perinatal infection and reached their fifth birthday this quarter was 100%.

## Comment

Uptake of all routine primary immunisations in babies reaching their first birthday was 95% or over again this quarter, including rotavirus. This is the first quarter that uptake of two doses of rotavirus has reached 95% in one year olds since introduction of the vaccine. This is the third COVER report to include uptake figures for two doses of meningococcal serotype B vaccine in babies, which was introduced in Wales in September 2015 [3]. Uptake of two doses of Men B vaccine in babies reaching one year of age this quarter increased to 96% and ranged by health board from 94% to 97%. Uptake of Men B has been 95% or over for the past three quarters.

National uptake of MMR vaccination in two year olds returned to 95% this quarter, after falling below 95% last quarter for the first time since 2013. Continued efforts to follow up children who have missed scheduled appointments remains a key priority to prevent outbreaks of measles and mumps in Wales.

Uptake of routine immunisations by four and five years of age have followed a generally decreasing trend for the past two years. Uptake of two doses of MMR vaccine remains the lowest of all vaccinations included in this composite measure. The proportion of children up to date by 5 years of age this quarter has remained stable compared to last quarter although the coverage in these children has increased since their fourth birthday (with the largest increase of 3.9% seen in the 4 in 1 Preschool Booster), this may be linked to checking and catch-up at entry to school.

This report presents uptake figures for MenACWY vaccine in all School Year groups, from School Year 9 to School Year 12 (aged 14 to 17 years of age). Uptake of MenACWY vaccine in last year's routine Year 9 cohort (current 2016-17 School Year 10) and last year's catch-up Year

11 cohort (current 2016-17 School Year 12) remained stable this quarter at 80% and 78% respectively. Vaccination sessions for 2016-17 School Year 9 and 11 groups have begun and uptake will increase over the next two quarters. Where possible individuals should be vaccinated before they reach school-leaving age, when catch-up becomes more challenging. Uptake of the MenACWY vaccine in age groups vaccinated in General Practice (now aged 18, 19 and 20 years of age), remains low at 27%, 37% and 38% respectively as at 08/05/2017 [4]. Similar levels of uptake in the GP-based MenACWY catch-up in these age-groups have been reported in England [5].

In all secondary school year groups reported on, coverage of one dose of MMR vaccine remains under 95% and coverage of two doses of MMR vaccine remains under 90%. Over the 2016-17 academic year the MenACWY catch-up campaign for 16 year olds may act as an additional opportunity for an immunisation status check before children leave school. Ensuring that teenagers and younger adults are adequately protected with MMR is important as forthcoming summer music and arts festivals may act as hot-spots of transmission of measles. The majority of measles cases seen in Wales in 2016 were in outbreaks which had their origin in UK summer festivals [6].

## References

[1] Welsh Government (2016) Removal of the infant dose of meningococcal serogroup C (MenC) conjugate vaccine given at three months from 1 July 2016, Welsh Health Circular. WHC(2016)027.

<http://gov.wales/docs/dhss/publications/160414whc027en.pdf>

[2] Welsh Government (2015) Meningococcal ACWY conjugate vaccination (MenACWY) - Revision, Welsh Health Circular. WHC(2015)037. <http://gov.wales/docs/dhss/publications/150724whc037en.pdf>

[3] Welsh Government (2015) Introduction of MenB Immunisation for Infants, Welsh Health Circular.

WHC(2015)040. <http://gov.wales/docs/dhss/publications/150727whc040en.pdf>

[4] Public Health Wales (2016). MenACWY catch-up immunisation uptake data (collected through Audit+). Public Health Wales Vaccine Preventable Disease Programme and Communicable Disease Surveillance Centre.

<http://www.wales.nhs.uk/sitesplus/888/page/88528>

[5] Public Health England. MenACWY vaccine coverage estimates, report: to end of October 2016. 2016;

Available from: <https://www.gov.uk/government/publications/meningococcal-acwy-immunisation-programme-vaccine-coverage-estimates>

[6] O le Polain de Waroux *et al.* Summer music and arts festivals as hot spots for measles transmission: experience from England and Wales, June to October 2016. *Eurosurveillance* 2016; 21(44):pii30390. Available from: <http://www.eurosurveillance.org/ViewArticle.aspx?ArticleId=22634>

## Changes to the COVER report

Since 2016 Quarter 2 (COVER 119) coverage figures by school year has been included for the older age groups. This is intended to give a clearer picture of the proportion of children protected against vaccine preventable disease at any given quarter and the progress of school based vaccine programmes throughout the academic year. At the time data for this report were extracted, vaccination sessions for the 2016-17 school year would have begun but will not be complete. Uptake figures for school based vaccinations will increase over the next three quarters. All vaccinations in Cardiff and Vale (apart from the HPV vaccine and the MenACWY catch-up campaign in 16 year olds) are given through General Practice and children are invited for vaccinations throughout the year when they turn the appropriate age.

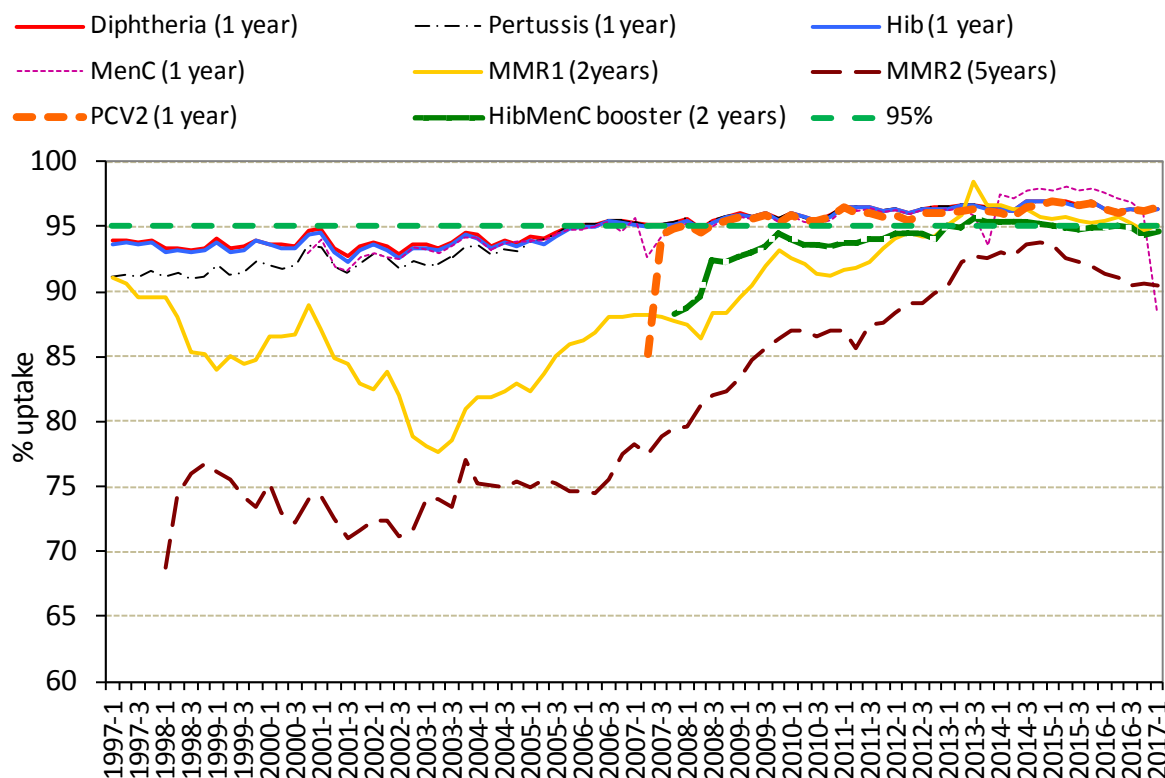
## Report prepared by Public Health Wales Vaccine Preventable Disease Programme and Communicable Disease Surveillance Centre.

Data for this report was provided by NHS Wales Informatics Service from the National Community Child Health Database (NCCHD). The data was sourced from Community Child Health databases maintained by local Child Health Office staff in Trusts throughout Wales based on regular returns from doctors and nurses who immunise or advise on immunisation. Uptake data presented throughout are for HB resident population, not for HB GP practice populations. The maps, graphs, tables 1 and 2 are best viewed in colour.

**Suggested citation for this report:** Public Health Wales Health Protection Division. Vaccine uptake in Children in Wales, October to December 2016: COVER report 122, May 2017. Cardiff, Public Health Wales.

For further information on this report please contact: [surveillance.requests@wales.nhs.uk](mailto:surveillance.requests@wales.nhs.uk)

**Figure 1.** Percentage uptake of childhood immunisations in Wales, quarter 1 1997 to quarter 1 2017\*. Data are for children reaching 1 year of age each quarter for diphtheria, pertussis, Hib, MenC<sup>9</sup> and pneumococcal conjugate vaccine (PCV2), children reaching 2 years of age for MMR1 (first dose) and the Hib/MenC booster, and 5 years of age for MMR2 (second dose).



\* Uptake data for quarter 3 2014 to quarter 4 2014 presented here are based on estimates calculated in August 2015, rather than published data, due to data quality problems affecting reported uptake of some immunisations in reports published during this period.

**Figure 2.** Summary of uptake rates for selected immunisations<sup>9</sup> in resident children reaching their 1st, 2nd, 5th and 16th birthday between 01/01/17 and 31/03/17 and resident on 31/03/17.

### All Wales Summary - COVER122

5 in 1 primary by age 1y (3 doses)	96.3%
MenC primary by age 1y (1 dose)	88.6%
MenB by age 1y (2 doses)	96.1%
Rotavirus primary by age 1yr (2 doses)	95.1%
PCV primary by age 1y (2 doses)	96.5%
MMR by age 2y (1st dose)	95.1%
PCV by age 2y (final (3rd) dose)	95.4%
Hib/MenC booster by age 2y	94.6%
MMR by age 5y (2nd dose)	90.4%
4 in 1 pre-school booster by age 5y	93.1%
MMR coverage (1 dose) by age 16y	92.7%
MMR coverage (2 doses) by age 16y	87.2%
3 in 1 Teenage booster by age 16y	83.8%

<sup>9</sup> This cohort of children was the last to be offered the MenC vaccine at 12 weeks of age therefore uptake will be lower as there has been less time for catch-up.

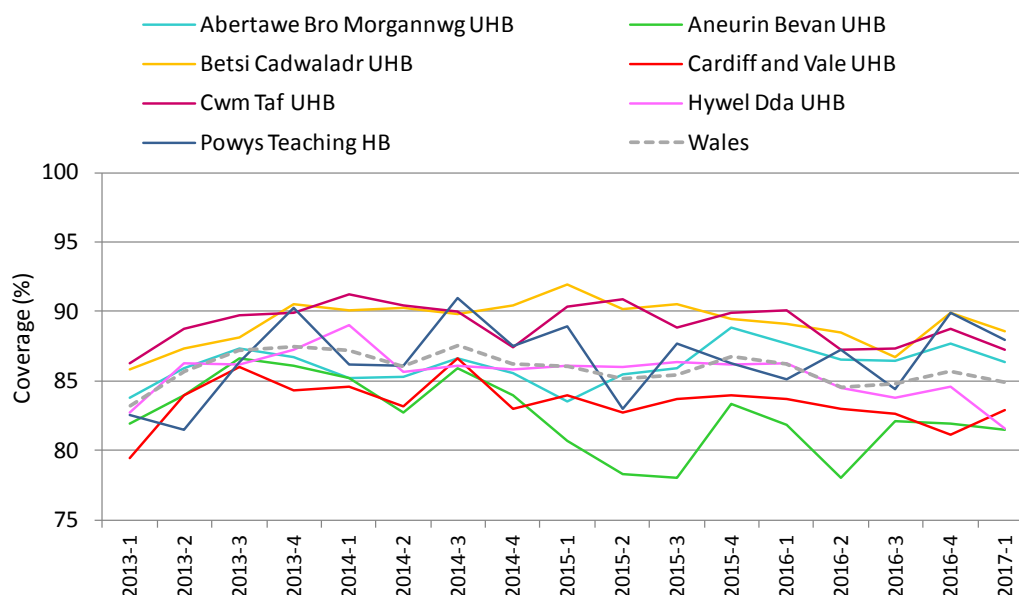
**Figure 3.** Percentage uptake of resident children reaching their 4<sup>th</sup> birthday between 01/01/17 and 31/03/17 and are up to date with all scheduled vaccines<sup>10</sup> by Health Board.



**Table 1.** Percentages of resident children reaching their 4<sup>th</sup> birthday during quarter 1 2016 to quarter 1 2017 who are up to date with all scheduled vaccines<sup>10</sup>, by Health Board.

Area	Up to date in schedule				
	2016-1	2016-2	2016-3	2016-4	2017-1
Abertawe Bro Morgannwg UHB	87.7	86.6	86.4	87.7	86.4
Aneurin Bevan UHB	81.9	78.0	82.2	81.9	81.5
Betsi Cadwaladr UHB	89.1	88.5	86.7	89.9	88.6
Cardiff and Vale UHB	83.7	83.0	82.7	81.2	82.9
Cwm Taf UHB	90.1	87.3	87.3	88.8	87.3
Hywel Dda UHB	86.3	84.5	83.8	84.6	81.6
Powys Teaching HB	85.1	87.3	84.4	89.9	88.0
<b>Wales</b>	<b>86.2</b>	<b>84.6</b>	<b>84.8</b>	<b>85.7</b>	<b>84.9</b>

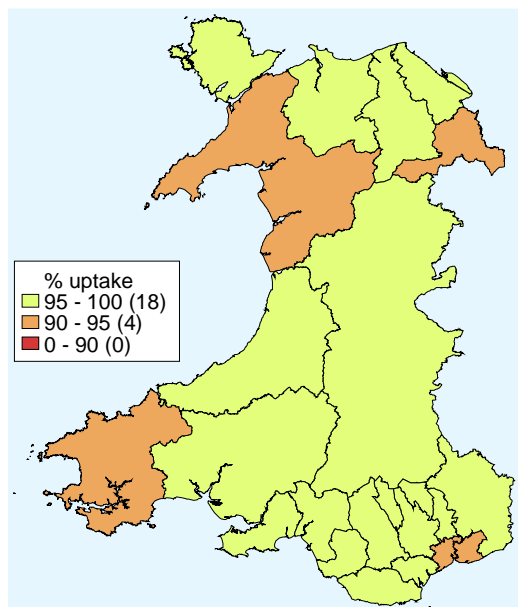
**Figure 4.** Trends in the percentages of children reaching their 4<sup>th</sup> birthday who are up to date with all scheduled vaccines<sup>10</sup>, by Health Board\*.



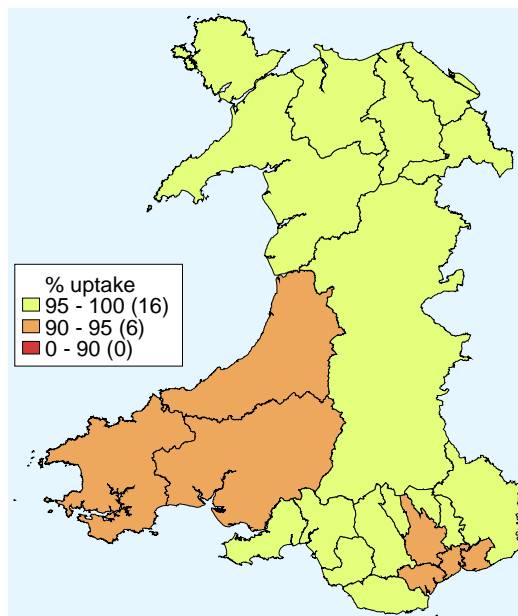
\* Uptake data for quarter 3 2014 to quarter 4 2014 presented here are based on estimates calculated in August 2015, rather than published data, due to data quality problems affecting reported uptake of some immunisations in reports published during this period.

<sup>10</sup> Completed "4 in 1" preschool booster, the Hib/MenC booster and second MMR dose by four years of age. The calculation method for proportions of children up to date with routine immunisation by four years of age was revised during 2014 quarter 1, to remove the pneumococcal conjugate vaccine booster dose, as this is not clinically indicated after two years of age.

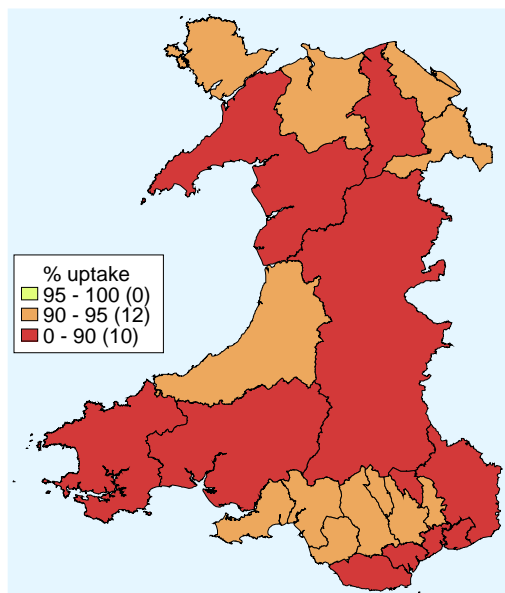
**Figure 5.** Uptake of “5 in 1” vaccine in Welsh Local Authority areas in children reaching their 1<sup>st</sup> birthday between 01/01/17 and 31/03/17.



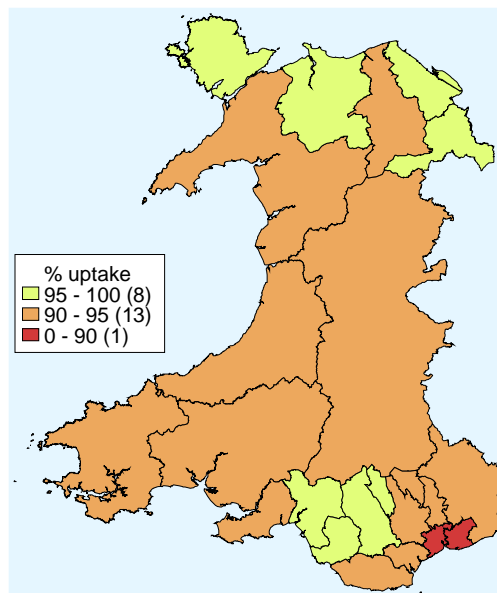
**Figure 6.** Uptake of at least 1 dose of MMR immunisation in Welsh Local Authority areas in children reaching their 2<sup>nd</sup> birthday between 01/01/17 and 31/03/17.



**Figure 7.** Uptake of two doses of MMR vaccine in Welsh Local Authority areas in children reaching their 5<sup>th</sup> birthday between 01/01/17 and 31/03/17.



**Figure 8.** Uptake of “4 in 1” vaccine in Welsh Local Authority areas in children reaching their 5<sup>th</sup> birthday between 01/01/17 and 31/03/17.





**Table 3.** Vaccine uptake in children reaching their 1st birthday between 01/01/17 and 31/03/17 and resident on 31/03/17.

Area	Resident children	D3	T3	P3	Po3	Hib3	MMR1	MenC <sup>1</sup>	Rotavirus	PCV2 <sup>2</sup>	Men B <sup>3</sup>	HibMenC
	(n)	(n) (%)	(n) (%)	(n) (%)	(n) (%)	(n) (%)	(n) (%)	(n) (%)	(n) (%)	(n) (%)	(n) (%)	(n) (%)
<b>Abertawe Bro Morgannwg University HB</b>												
Bridgend LA	365	355 97.3	355 97.3	355 97.3	355 97.3	355 97.3	1 0.3	330 90.4	353 96.7	356 97.5	353 96.7	0 0.0
Neath Port Talbot LA	382	378 99.0	378 99.0	378 99.0	378 99.0	378 99.0	0 0.0	352 92.1	372 97.4	376 98.4	376 98.4	1 0.3
Swansea LA	643	613 95.3	613 95.3	613 95.3	613 95.3	613 95.3	3 0.5	567 88.2	610 94.9	611 95.0	611 95.0	2 0.3
<b>Health Board Total</b>	<b>1390</b>	<b>1346 96.8</b>	<b>1346 96.8</b>	<b>1346 96.8</b>	<b>1346 96.8</b>	<b>1346 96.8</b>	<b>4 0.3</b>	<b>1249 89.9</b>	<b>1335 96.0</b>	<b>1343 96.6</b>	<b>1340 96.4</b>	<b>3 0.2</b>
<b>Aneurin Bevan University HB</b>												
Blaenau Gwent LA	163	159 97.5	159 97.5	159 97.5	159 97.5	159 97.5	0 0.0	147 90.2	157 96.3	161 98.8	160 98.2	0 0.0
Caerphilly LA	509	496 97.4	496 97.4	496 97.4	496 97.4	496 97.4	0 0.0	453 89.0	489 96.1	498 97.8	496 97.4	0 0.0
Monmouthshire LA	177	171 96.6	171 96.6	171 96.6	171 96.6	171 96.6	0 0.0	164 92.7	168 94.9	172 97.2	172 97.2	1 0.6
Newport LA	468	443 94.7	443 94.7	443 94.7	443 94.7	442 94.4	0 0.0	383 81.8	431 92.1	449 95.9	445 95.1	0 0.0
Torfaen LA	252	244 96.8	244 96.8	244 96.8	244 96.8	244 96.8	0 0.0	228 90.5	239 94.8	247 98.0	245 97.2	0 0.0
<b>Health Board Total</b>	<b>1569</b>	<b>1513 96.4</b>	<b>1513 96.4</b>	<b>1513 96.4</b>	<b>1513 96.4</b>	<b>1512 96.4</b>	<b>0 0.0</b>	<b>1375 87.6</b>	<b>1484 94.6</b>	<b>1527 97.3</b>	<b>1518 96.7</b>	<b>1 0.1</b>
<b>Betsi Cadwaladr University HB</b>												
Anglesey LA	168	166 98.8	166 98.8	166 98.8	166 98.8	166 98.8	1 0.6	155 92.3	163 97.0	166 98.8	166 98.8	2 1.2
Conwy LA	280	270 96.4	270 96.4	270 96.4	270 96.4	270 96.4	5 1.8	244 87.1	265 94.6	271 96.8	272 97.1	4 1.4
Denbighshire LA	224	215 96.0	215 96.0	215 96.0	215 96.0	215 96.0	0 0.0	198 88.4	215 96.0	217 96.9	215 96.0	0 0.0
Flintshire LA	356	347 97.5	347 97.5	347 97.5	347 97.5	347 97.5	0 0.0	325 91.3	343 96.3	349 98.0	349 98.0	0 0.0
Gwynedd LA	292	277 94.9	277 94.9	277 94.9	277 94.9	277 94.9	4 1.4	242 82.9	274 93.8	279 95.5	279 95.5	4 1.4
Wrexham LA	363	341 93.9	341 93.9	341 93.9	341 93.9	341 93.9	2 0.6	326 89.8	342 94.2	345 95.0	344 94.8	2 0.6
<b>Health Board Total</b>	<b>1683</b>	<b>1616 96.0</b>	<b>1616 96.0</b>	<b>1616 96.0</b>	<b>1616 96.0</b>	<b>1616 96.0</b>	<b>12 0.7</b>	<b>1490 88.5</b>	<b>1602 95.2</b>	<b>1627 96.7</b>	<b>1625 96.6</b>	<b>12 0.7</b>
<b>Cardiff and Vale University HB</b>												
Cardiff LA	1088	1036 95.2	1036 95.2	1036 95.2	1036 95.2	1036 95.2	9 0.8	936 86.0	1022 93.9	1032 94.9	1021 93.8	6 0.6
Vale of Glamorgan LA	317	307 96.8	307 96.8	307 96.8	307 96.8	307 96.8	3 0.9	279 88.0	303 95.6	307 96.8	307 96.8	2 0.6
<b>Health Board Total</b>	<b>1405</b>	<b>1343 95.6</b>	<b>1343 95.6</b>	<b>1343 95.6</b>	<b>1343 95.6</b>	<b>1343 95.6</b>	<b>12 0.9</b>	<b>1215 86.5</b>	<b>1325 94.3</b>	<b>1339 95.3</b>	<b>1328 94.5</b>	<b>8 0.6</b>
<b>Cwm Taf University HB</b>												
Merthyr Tydfil LA	185	181 97.8	181 97.8	181 97.8	181 97.8	181 97.8	1 0.5	173 93.5	181 97.8	181 97.8	180 97.3	1 0.5
Rhondda Cynon Taf LA	716	696 97.2	696 97.2	696 97.2	696 97.2	696 97.2	1 0.1	654 91.3	691 96.5	698 97.5	697 97.3	1 0.1
<b>Health Board Total</b>	<b>901</b>	<b>877 97.3</b>	<b>877 97.3</b>	<b>877 97.3</b>	<b>877 97.3</b>	<b>877 97.3</b>	<b>2 0.2</b>	<b>827 91.8</b>	<b>872 96.8</b>	<b>879 97.6</b>	<b>877 97.3</b>	<b>2 0.2</b>
<b>Hywel Dda University HB</b>												
Carmarthenshire LA	469	450 95.9	450 95.9	450 95.9	450 95.9	450 95.9	0 0.0	422 90.0	449 95.7	448 95.5	449 95.7	0 0.0
Ceredigion LA	161	158 98.1	158 98.1	158 98.1	158 98.1	158 98.1	2 1.2	153 95.0	153 95.0	157 97.5	158 98.1	2 1.2
Pembrokeshire LA	274	260 94.9	260 94.9	260 94.9	260 94.9	260 94.9	0 0.0	233 85.0	252 92.0	261 95.3	258 94.2	0 0.0
<b>Health Board Total</b>	<b>904</b>	<b>868 96.0</b>	<b>868 96.0</b>	<b>868 96.0</b>	<b>868 96.0</b>	<b>868 96.0</b>	<b>2 0.2</b>	<b>808 89.4</b>	<b>854 94.5</b>	<b>866 95.8</b>	<b>865 95.7</b>	<b>2 0.2</b>
<b>Powys Teaching HB</b>	<b>278</b>	<b>266 95.7</b>	<b>266 95.7</b>	<b>266 95.7</b>	<b>266 95.7</b>	<b>266 95.7</b>	<b>0 0.0</b>	<b>241 86.7</b>	<b>257 92.4</b>	<b>264 95.0</b>	<b>260 93.5</b>	<b>0 0.0</b>
Unknown	5	5 100.0	5 100.0	5 100.0	5 100.0	5 100.0	0 0.0	4 80.0	5 100.0	5 100.0	5 100.0	0 0.0
<b>Wales Total</b>	<b>8135</b>	<b>7834 96.3</b>	<b>7834 96.3</b>	<b>7834 96.3</b>	<b>7834 96.3</b>	<b>7834 96.3</b>	<b>32 0.4</b>	<b>7209 88.6</b>	<b>7734 95.1</b>	<b>7850 96.5</b>	<b>7818 96.1</b>	<b>28 0.3</b>

<sup>1</sup> This cohort of children was the last to be offered the MenC vaccine at 12 weeks of age therefore uptake will be lower as there has been less time for catch-up.

<sup>2</sup> Full primary two dose course of pneumococcal conjugate vaccine.

<sup>3</sup> Uptake of two doses of meningococcal serogroup B (MenB) vaccine, scheduled at two and four months of age.

**Table 4.** Vaccine uptake in children reaching their 2nd birthday between 01/01/17 and 31/03/17 and resident on 31/03/17.

Area	Resident children	D3		T3		P3		Po3		Hib3		MMR1		MenC <sup>1</sup>		PCV2 <sup>2</sup>		PCVf <sup>3</sup>		HibMenC	
	(n)	(n)	(%)	(n)	(%)	(n)	(%)	(n)	(%)	(n)	(%)	(n)	(%)	(n)	(%)	(n)	(%)	(n)	(%)	(n)	(%)
<b>Abertawe Bro Morgannwg University HB</b>																					
Bridgend LA	352	347	98.6	347	98.6	347	98.6	347	98.6	347	98.6	336	95.5	345	98	342	97.16	342	97.16	339	96.31
Neath Port Talbot LA	376	372	98.9	372	98.9	372	98.9	372	98.9	372	98.9	358	95.2	372	98.9	366	97.34	362	96.28	358	95.21
Swansea LA	614	600	97.7	600	97.7	600	97.7	599	97.6	600	97.7	584	95.1	592	96.4	592	96.42	586	95.44	581	94.63
<b>Health Board Total</b>	<b>1342</b>	<b>1319</b>	<b>98.3</b>	<b>1319</b>	<b>98.3</b>	<b>1319</b>	<b>98.3</b>	<b>1318</b>	<b>98.2</b>	<b>1319</b>	<b>98.3</b>	<b>1278</b>	<b>95.2</b>	<b>1309</b>	<b>97.5</b>	<b>1300</b>	<b>96.87</b>	<b>1290</b>	<b>96.13</b>	<b>1278</b>	<b>95.23</b>
<b>Aneurin Bevan University HB</b>																					
Blaenau Gwent LA	198	194	98.0	194	98.0	194	98.0	194	98.0	194	98.0	191	96.5	196	99	196	98.99	191	96.46	190	95.96
Caerphilly LA	482	468	97.1	468	97.1	468	97.1	468	97.1	468	97.1	456	94.6	468	97.1	460	95.44	461	95.64	456	94.61
Monmouthshire LA	201	194	96.5	194	96.5	194	96.5	194	96.5	194	96.5	193	96.0	194	96.5	194	96.52	190	94.53	189	94.03
Newport LA	497	478	96.2	478	96.2	478	96.2	478	96.2	478	96.2	463	93.2	476	95.8	468	94.16	464	93.36	456	91.75
Torfaen LA	213	209	98.1	209	98.1	209	98.1	209	98.1	209	98.1	203	95.3	207	97.2	204	95.77	204	95.77	201	94.37
<b>Health Board Total</b>	<b>1591</b>	<b>1543</b>	<b>97.0</b>	<b>1543</b>	<b>97.0</b>	<b>1543</b>	<b>97.0</b>	<b>1543</b>	<b>97.0</b>	<b>1543</b>	<b>97.0</b>	<b>1506</b>	<b>94.7</b>	<b>1541</b>	<b>96.9</b>	<b>1522</b>	<b>95.66</b>	<b>1510</b>	<b>94.91</b>	<b>1492</b>	<b>93.78</b>
<b>Betsi Cadwaladr University HB</b>																					
Anglesey LA	165	162	98.2	162	98.2	162	98.2	162	98.2	162	98.2	160	97.0	160	97	162	98.18	160	96.97	160	96.97
Conwy LA	265	256	96.6	256	96.6	256	96.6	256	96.6	256	96.6	255	96.2	257	97	252	95.09	255	96.23	251	94.72
Denbighshire LA	242	237	97.9	237	97.9	237	97.9	237	97.9	237	97.9	235	97.1	237	97.9	233	96.28	236	97.52	234	96.69
Flintshire LA	363	353	97.2	353	97.2	353	97.2	352	97.0	353	97.2	348	95.9	350	96.4	347	95.59	348	95.87	344	94.77
Gwynedd LA	264	261	98.9	261	98.9	261	98.9	261	98.9	261	98.9	253	95.8	257	97.3	256	96.97	254	96.21	253	95.83
Wrexham LA	357	350	98.0	350	98.0	350	98.0	350	98.0	350	98.0	343	96.1	348	97.5	347	97.2	342	95.8	341	95.52
<b>Health Board Total</b>	<b>1656</b>	<b>1619</b>	<b>97.8</b>	<b>1619</b>	<b>97.8</b>	<b>1619</b>	<b>97.8</b>	<b>1618</b>	<b>97.7</b>	<b>1619</b>	<b>97.8</b>	<b>1594</b>	<b>96.3</b>	<b>1609</b>	<b>97.2</b>	<b>1597</b>	<b>96.44</b>	<b>1595</b>	<b>96.32</b>	<b>1583</b>	<b>95.59</b>
<b>Cardiff and Vale University HB</b>																					
Cardiff LA	1086	1051	96.8	1051	96.8	1051	96.8	1051	96.8	1049	96.6	1026	94.5	1035	95.3	1022	94.11	1026	94.48	1017	93.65
Vale of Glamorgan LA	345	334	96.8	334	96.8	334	96.8	334	96.8	333	96.5	328	95.1	334	96.8	325	94.2	329	95.36	326	94.49
<b>Health Board Total</b>	<b>1431</b>	<b>1385</b>	<b>96.8</b>	<b>1385</b>	<b>96.8</b>	<b>1385</b>	<b>96.8</b>	<b>1385</b>	<b>96.8</b>	<b>1382</b>	<b>96.6</b>	<b>1354</b>	<b>94.6</b>	<b>1369</b>	<b>95.7</b>	<b>1347</b>	<b>94.13</b>	<b>1355</b>	<b>94.69</b>	<b>1343</b>	<b>93.85</b>
<b>Cwm Taf University HB</b>																					
Merthyr Tydfil LA	179	174	97.2	174	97.2	174	97.2	174	97.2	174	97.2	171	95.5	174	97.2	172	96.09	173	96.65	171	95.53
Rhondda Cynon Taf LA	652	643	98.6	643	98.6	643	98.6	643	98.6	643	98.6	633	97.1	643	98.6	636	97.55	633	97.09	630	96.63
<b>Health Board Total</b>	<b>831</b>	<b>817</b>	<b>98.3</b>	<b>817</b>	<b>98.3</b>	<b>817</b>	<b>98.3</b>	<b>817</b>	<b>98.3</b>	<b>817</b>	<b>98.3</b>	<b>804</b>	<b>96.8</b>	<b>817</b>	<b>98.3</b>	<b>808</b>	<b>97.23</b>	<b>806</b>	<b>96.99</b>	<b>801</b>	<b>96.39</b>
<b>Hywel Dda University HB</b>																					
Carmarthenshire LA	467	455	97.4	455	97.4	455	97.4	455	97.4	455	97.4	435	93.1	452	96.8	444	95.07	440	94.22	435	93.15
Ceredigion LA	168	164	97.6	164	97.6	164	97.6	163	97.0	163	97.0	155	92.3	160	95.2	163	97.02	159	94.64	158	94.05
Pembrokeshire LA	307	288	93.8	288	93.8	288	93.8	288	93.8	288	93.8	279	90.9	291	94.8	287	93.49	280	91.21	279	90.88
<b>Health Board Total</b>	<b>942</b>	<b>907</b>	<b>96.3</b>	<b>907</b>	<b>96.3</b>	<b>907</b>	<b>96.3</b>	<b>906</b>	<b>96.2</b>	<b>906</b>	<b>96.2</b>	<b>869</b>	<b>92.3</b>	<b>903</b>	<b>95.9</b>	<b>894</b>	<b>94.9</b>	<b>879</b>	<b>93.31</b>	<b>872</b>	<b>92.57</b>
<b>Powys Teaching HB</b>	<b>265</b>	<b>257</b>	<b>97.0</b>	<b>257</b>	<b>97.0</b>	<b>257</b>	<b>97.0</b>	<b>257</b>	<b>97.0</b>	<b>257</b>	<b>97.0</b>	<b>255</b>	<b>96.2</b>	<b>255</b>	<b>96.2</b>	<b>255</b>	<b>96.23</b>	<b>256</b>	<b>96.6</b>	<b>253</b>	<b>95.47</b>
Unknown	3	3	100.0	3	100.0	3	100.0	3	100.0	3	100.0	3	100.0	2	66.7	2	66.67	2	66.67	3	100
<b>Wales Total</b>	<b>8061</b>	<b>7850</b>	<b>97.4</b>	<b>7850</b>	<b>97.4</b>	<b>7850</b>	<b>97.4</b>	<b>7847</b>	<b>97.3</b>	<b>7846</b>	<b>97.3</b>	<b>7663</b>	<b>95.1</b>	<b>7805</b>	<b>96.8</b>	<b>7725</b>	<b>95.83</b>	<b>7693</b>	<b>95.43</b>	<b>7625</b>	<b>94.59</b>

<sup>1</sup> Uptake of a completed one dose primary course of MenC vaccination.

<sup>2</sup> Full primary two dose course of pneumococcal conjugate vaccine.

<sup>3</sup> Uptake of two doses of meningococcal serogroup B (MenB) vaccine, scheduled at two and four months of age.

**Table 5.** Vaccine uptake in children reaching their 4th birthday between 01/01/17 and 31/03/17 and resident on 31/03/17. The proportion of children who have received all of these vaccines by their 4th birthday is also presented.

Area	Resident children	4 in 1 Preschool Booster <sup>1</sup>		HibMenC		MMR dose 2		Up to date in schedule <sup>2</sup>	
	(n)	(n)	(%)	(n)	(%)	(n)	(%)	(n)	(%)
<b>Abertawe Bro Morgannwg University HB</b>									
Bridgend LA	388	353	91.0	374	96.4	350	90.2	346	89.2
Neath Port Talbot LA	361	317	87.8	343	95.0	315	87.3	312	86.4
Swansea LA	603	531	88.1	566	93.9	519	86.1	510	84.6
<b>Health Board Total</b>	<b>1352</b>	<b>1201</b>	<b>88.8</b>	<b>1283</b>	<b>94.9</b>	<b>1184</b>	<b>87.6</b>	<b>1168</b>	<b>86.4</b>
<b>Aneurin Bevan University HB</b>									
Blaenau Gwent LA	203	165	81.3	194	95.6	164	80.8	163	80.3
Caerphilly LA	504	435	86.3	490	97.2	430	85.3	429	85.1
Monmouthshire LA	253	229	90.5	231	91.3	222	87.7	220	87.0
Newport LA	512	406	79.3	464	90.6	395	77.1	387	75.6
Torfaen LA	268	226	84.3	253	94.4	221	82.5	219	81.7
<b>Health Board Total</b>	<b>1740</b>	<b>1461</b>	<b>84.0</b>	<b>1632</b>	<b>93.8</b>	<b>1432</b>	<b>82.3</b>	<b>1418</b>	<b>81.5</b>
<b>Betsi Cadwaladr University HB</b>									
Anglesey LA	177	166	93.8	169	95.5	164	92.7	162	91.5
Conwy LA	283	258	91.2	265	93.6	254	89.8	250	88.3
Denbighshire LA	242	211	87.2	232	95.9	209	86.4	207	85.5
Flintshire LA	400	372	93.0	371	92.8	359	89.8	356	89.0
Gwynedd LA	316	289	91.5	302	95.6	283	89.6	282	89.2
Wrexham LA	383	351	91.6	361	94.3	344	89.8	339	88.5
<b>Health Board Total</b>	<b>1801</b>	<b>1647</b>	<b>91.4</b>	<b>1700</b>	<b>94.4</b>	<b>1613</b>	<b>89.6</b>	<b>1596</b>	<b>88.6</b>
<b>Cardiff and Vale University HB</b>									
Cardiff LA	1094	939	85.8	993	90.8	914	83.5	889	81.3
Vale of Glamorgan LA	372	334	89.8	352	94.6	330	88.7	326	87.6
<b>Health Board Total</b>	<b>1466</b>	<b>1273</b>	<b>86.8</b>	<b>1345</b>	<b>91.7</b>	<b>1244</b>	<b>84.9</b>	<b>1215</b>	<b>82.9</b>
<b>Cwm Taf University HB</b>									
Merthyr Tydfil LA	176	162	92.0	171	97.2	160	90.9	159	90.3
Rhondda Cynon Taf LA	735	655	89.1	697	94.8	642	87.3	636	86.5
<b>Health Board Total</b>	<b>911</b>	<b>817</b>	<b>89.7</b>	<b>868</b>	<b>95.3</b>	<b>802</b>	<b>88.0</b>	<b>795</b>	<b>87.3</b>
<b>Hywel Dda University HB</b>									
Carmarthenshire LA	460	375	81.5	431	93.7	371	80.7	365	79.3
Ceredigion LA	170	152	89.4	159	93.5	148	87.1	147	86.5
Pembrokeshire LA	305	262	85.9	283	92.8	254	83.3	251	82.3
<b>Health Board Total</b>	<b>935</b>	<b>789</b>	<b>84.4</b>	<b>873</b>	<b>93.4</b>	<b>773</b>	<b>82.7</b>	<b>763</b>	<b>81.6</b>
<b>Powys Teaching HB</b>	<b>308</b>	<b>285</b>	<b>92.5</b>	<b>289</b>	<b>93.8</b>	<b>273</b>	<b>88.6</b>	<b>271</b>	<b>88.0</b>
Unknown	23	20	87.0	22	95.7	19	82.6	19	82.6
<b>Wales Total</b>	<b>8536</b>	<b>7493</b>	<b>87.8</b>	<b>8012</b>	<b>93.9</b>	<b>7340</b>	<b>86.0</b>	<b>7245</b>	<b>84.9</b>

<sup>1</sup> Uptake of acellular pertussis used as proxy

<sup>2</sup> Completed "4 in 1" preschool booster, the Hib/ MenC booster and second MMR dose by four years of age.

**Table 6.** Vaccine uptake in children reaching their 5th birthday between 01/01/17 and 31/03/17 and resident on 31/03/17. The proportion of children who have received all of these vaccines by their 5th birthday is also presented.

Area	Resident children	4 in 1 Preschool Booster <sup>1</sup>		HibMenCb		MMR dose 2		Up to date in schedule <sup>2</sup>	
	(n)	(n)	(%)	(n)	(%)	(n)	(%)	(n)	(%)
<b>Abertawe Bro Morgannwg University HB</b>									
Bridgend LA	399	379	95.0	375	94.0	366	91.7	363	91.0
Neath Port Talbot LA	414	395	95.4	392	94.7	384	92.8	376	90.8
Swansea LA	720	670	93.1	678	94.2	668	92.8	649	90.1
<b>Health Board Total</b>	<b>1533</b>	<b>1444</b>	<b>94.2</b>	<b>1445</b>	<b>94.3</b>	<b>1418</b>	<b>92.5</b>	<b>1388</b>	<b>90.5</b>
<b>Aneurin Bevan University HB</b>									
Blaenau Gwent LA	175	162	92.6	163	93.1	157	89.7	156	89.1
Caerphilly LA	524	494	94.3	504	96.2	489	93.3	478	91.2
Monmouthshire LA	249	225	90.4	226	90.8	213	85.5	213	85.5
Newport LA	490	425	86.7	431	88.0	410	83.7	395	80.6
Torfaen LA	300	277	92.3	287	95.7	272	90.7	268	89.3
<b>Health Board Total</b>	<b>1738</b>	<b>1583</b>	<b>91.1</b>	<b>1611</b>	<b>92.7</b>	<b>1541</b>	<b>88.7</b>	<b>1510</b>	<b>86.9</b>
<b>Betsi Cadwaladr University HB</b>									
Anglesey LA	209	206	98.6	196	93.8	194	92.8	194	92.8
Conwy LA	288	274	95.1	269	93.4	262	91.0	262	91.0
Denbighshire LA	238	222	93.3	223	93.7	214	89.9	213	89.5
Flintshire LA	447	435	97.3	414	92.6	412	92.2	407	91.1
Gwynedd LA	340	320	94.1	311	91.5	305	89.7	302	88.8
Wrexham LA	403	387	96.0	379	94.0	377	93.5	369	91.6
<b>Health Board Total</b>	<b>1925</b>	<b>1844</b>	<b>95.8</b>	<b>1792</b>	<b>93.1</b>	<b>1764</b>	<b>91.6</b>	<b>1747</b>	<b>90.8</b>
<b>Cardiff and Vale University HB</b>									
Cardiff LA	1172	1075	91.7	1056	90.1	1037	88.5	1004	85.7
Vale of Glamorgan LA	372	339	91.1	350	94.1	334	89.8	327	87.9
<b>Health Board Total</b>	<b>1544</b>	<b>1414</b>	<b>91.6</b>	<b>1406</b>	<b>91.1</b>	<b>1371</b>	<b>88.8</b>	<b>1331</b>	<b>86.2</b>
<b>Cwm Taf University HB</b>									
Merthyr Tydfil LA	183	174	95.1	175	95.6	172	94.0	169	92.3
Rhondda Cynon Taf LA	671	638	95.1	651	97.0	626	93.3	621	92.5
<b>Health Board Total</b>	<b>854</b>	<b>812</b>	<b>95.1</b>	<b>826</b>	<b>96.7</b>	<b>798</b>	<b>93.4</b>	<b>790</b>	<b>92.5</b>
<b>Hywel Dda University HB</b>									
Cardiganshire LA	551	500	90.7	507	92.0	486	88.2	476	86.4
Ceredigion LA	159	150	94.3	147	92.5	150	94.3	147	92.5
Pembrokeshire LA	376	343	91.2	345	91.8	327	87.0	323	85.9
<b>Health Board Total</b>	<b>1086</b>	<b>993</b>	<b>91.4</b>	<b>999</b>	<b>92.0</b>	<b>963</b>	<b>88.7</b>	<b>946</b>	<b>87.1</b>
<b>Powys Teaching HB</b>	<b>281</b>	<b>254</b>	<b>90.4</b>	<b>253</b>	<b>90.0</b>	<b>244</b>	<b>86.8</b>	<b>237</b>	<b>84.3</b>
Unknown	8	7	87.5	7	87.5	7	87.5	7	87.5
<b>Wales Total</b>	<b>8969</b>	<b>8351</b>	<b>93.1</b>	<b>8339</b>	<b>93.0</b>	<b>8106</b>	<b>90.4</b>	<b>7956</b>	<b>88.7</b>

<sup>1</sup> Uptake of acellular pertussis used as proxy

<sup>2</sup> Completed "4 in 1" preschool booster, the Hib/ MenC booster and second MMR dose by four years of age.

**Table 7.** Vaccine uptake in children reaching their 5th birthday between between 01/01/17 and 31/03/17 and resident on 31/03/17.

Area	Resident children	D3	T3	P3	Po3	Hib3	MenC <sup>1</sup>	PCVf <sup>2</sup>	HibMenC	MMR1	MMR2	D4	T4	aP	Po4
	(n)	(n) (%)	(n) (%)	(n) (%)	(n) (%)	(n) (%)	(n) (%)	(n) (%)	(n) (%)	(n) (%)	(n) (%)	(n) (%)	(n) (%)	(n) (%)	(n) (%)
<b>Abertawe Bro Morgannwg University HE</b>															
Bridgend LA	399	381 95.5	381 95.5	381 95.5	381 95.5	381 95.5	377 94.5	372 93.2	375 94.0	389 97.5	366 91.7	379 95.0	379 95.0	379 95.0	379 95.0
Neath Port Talbot LA	414	403 97.3	403 97.3	403 97.3	403 97.3	403 97.3	396 95.7	388 93.7	392 94.7	406 98.1	384 92.8	395 95.4	395 95.4	395 95.4	395 95.4
Swansea LA	720	692 96.1	692 96.1	692 96.1	691 96.0	692 96.1	672 93.3	672 93.3	678 94.2	696 96.7	668 92.8	670 93.1	670 93.1	670 93.1	669 92.9
<b>Health Board Total</b>	<b>1533</b>	<b>1476 96.3</b>	<b>1476 96.3</b>	<b>1476 96.3</b>	<b>1475 96.2</b>	<b>1476 96.3</b>	<b>1445 94.3</b>	<b>1432 93.4</b>	<b>1445 94.3</b>	<b>1491 97.3</b>	<b>1418 92.5</b>	<b>1444 94.2</b>	<b>1444 94.2</b>	<b>1444 94.2</b>	<b>1443 94.1</b>
<b>Aneurin Bevan University HB</b>															
Blaenau Gwent LA	175	167 95.4	167 95.4	167 95.4	167 95.4	167 95.4	164 93.7	163 93.1	163 93.1	170 97.1	157 89.7	162 92.6	162 92.6	162 92.6	162 92.6
Caerphilly LA	524	514 98.1	514 98.1	514 98.1	514 98.1	514 98.1	508 96.9	509 95.1	504 94.4	519 98.9	489 93.9	494 94.6	494 94.6	494 94.4	494 94.4
Monmouthshire LA	249	228 91.6	228 91.6	228 91.6	228 91.6	228 91.6	226 90.8	227 91.2	226 90.8	237 95.2	213 85.5	225 90.4	225 90.4	225 90.4	225 90.4
Newport LA	490	448 91.4	448 91.4	447 91.2	447 91.2	448 91.4	434 88.6	436 91.5	431 89.8	462 96.6	410 86.8	426 89.3	426 89.3	425 89.3	426 89.5
Torfaen LA	300	291 97.0	291 97.0	291 97.0	291 97.0	291 97.0	287 95.7	286 95.3	287 95.7	296 98.7	272 90.7	277 92.3	277 92.3	277 92.3	277 92.3
<b>Health Board Total</b>	<b>1738</b>	<b>1648 94.8</b>	<b>1648 94.8</b>	<b>1647 94.8</b>	<b>1647 94.8</b>	<b>1647 94.8</b>	<b>1619 93.2</b>	<b>1621 93.3</b>	<b>1611 92.7</b>	<b>1684 96.9</b>	<b>1541 88.7</b>	<b>1584 91.1</b>	<b>1584 91.1</b>	<b>1583 91.1</b>	<b>1584 91.1</b>
<b>Betsi Cadwaladr University HB</b>															
Anglesey LA	209	197 94.3	197 94.3	197 94.3	197 94.3	197 94.3	196 93.8	194 92.8	196 93.8	207 99.0	194 92.8	206 98.6	206 98.6	206 98.6	206 98.6
Conwy LA	288	271 94.1	271 94.1	271 94.1	271 94.1	271 94.1	270 93.8	267 92.7	269 93.4	281 97.6	262 91.0	274 95.1	274 95.1	274 95.1	274 95.1
Denbighshire LA	238	224 94.1	224 94.1	224 94.1	224 94.1	224 94.1	218 91.6	219 92	223 93.7	232 97.5	214 89.9	222 93.3	222 93.3	222 93.3	222 93.3
Flintshire LA	447	420 94.0	420 94.0	420 94.0	420 94.0	420 94.0	419 93.7	415 92.8	414 92.6	441 98.7	412 92.2	435 97.3	435 97.3	435 97.3	435 97.3
Gwynedd LA	340	312 91.8	312 91.8	312 91.8	312 91.8	313 92.1	299 87.9	308 90.6	311 91.5	326 95.9	305 89.7	320 94.1	320 94.1	320 94.1	320 94.1
Wrexham LA	403	385 95.5	385 95.5	385 95.5	384 95.3	386 95.8	378 93.8	381 94.5	379 94.0	399 99.0	377 93.5	387 96.0	387 96.0	387 96.0	387 96.0
<b>Health Board Total</b>	<b>1925</b>	<b>1809 94.0</b>	<b>1809 94.0</b>	<b>1809 94.0</b>	<b>1808 93.9</b>	<b>1810 94.0</b>	<b>1779 92.4</b>	<b>1784 92.7</b>	<b>1792 93.1</b>	<b>1886 98.0</b>	<b>1764 91.6</b>	<b>1844 95.8</b>	<b>1844 95.8</b>	<b>1844 95.8</b>	<b>1844 95.8</b>
<b>Cardiff and Vale University HB</b>															
Cardiff LA	1172	1092 93.2	1092 93.2	1092 93.2	1092 93.2	1090 93.0	1043 89.0	1061 90.5	1056 90.1	1135 96.8	1037 88.5	1075 91.7	1075 91.7	1075 91.7	1075 91.7
Vale of Glamorgan LA	372	354 95.2	354 95.2	354 95.2	354 95.2	354 95.2	345 92.7	348 93.5	350 94.1	364 97.8	334 89.8	339 91.1	339 91.1	339 91.1	339 91.1
<b>Health Board Total</b>	<b>1544</b>	<b>1446 93.7</b>	<b>1446 93.7</b>	<b>1446 93.7</b>	<b>1446 93.7</b>	<b>1444 93.5</b>	<b>1388 89.9</b>	<b>1409 91.3</b>	<b>1406 91.1</b>	<b>1499 97.1</b>	<b>1371 88.8</b>	<b>1414 91.6</b>	<b>1414 91.6</b>	<b>1414 91.6</b>	<b>1414 91.6</b>
<b>Cwm Taf University HB</b>															
Merthyr Tydfil LA	183	177 96.7	177 96.7	177 96.7	176 96.2	176 96.2	174 95.1	177 96.7	175 95.6	181 98.9	172 94.0	174 95.1	174 95.1	174 95.1	174 95.1
Rhondda Cynon Taf LA	671	660 98.4	660 98.4	660 98.4	660 98.4	660 98.4	655 97.6	654 97.5	651 97.0	664 99.0	626 93.3	638 95.1	638 95.1	638 95.1	638 95.1
<b>Health Board Total</b>	<b>854</b>	<b>837 98.0</b>	<b>837 98.0</b>	<b>837 98.0</b>	<b>836 97.9</b>	<b>836 97.9</b>	<b>829 97.1</b>	<b>831 97.3</b>	<b>826 96.7</b>	<b>845 98.9</b>	<b>798 93.4</b>	<b>812 95.1</b>	<b>812 95.1</b>	<b>812 95.1</b>	<b>812 95.1</b>
<b>Hywel Dda University HB</b>															
Carmarthenshire LA	551	520 94.4	520 94.4	520 94.4	520 94.4	520 94.4	509 92.4	510 92.6	507 92.0	535 97.1	486 88.2	501 90.9	501 90.9	500 90.7	500 90.7
Ceredigion LA	159	152 95.6	152 95.6	152 95.6	151 95.0	150 94.3	145 91.2	145 91.2	147 92.5	153 96.2	150 94.3	150 94.3	150 94.3	150 94.3	150 94.3
Pembrokeshire LA	376	350 93.1	350 93.1	350 93.1	350 93.1	350 93.1	342 91.0	342 91	345 91.8	361 96.0	327 87.0	343 91.2	343 91.2	343 91.2	343 91.2
<b>Health Board Total</b>	<b>1086</b>	<b>1022 94.1</b>	<b>1022 94.1</b>	<b>1022 94.1</b>	<b>1021 94.0</b>	<b>1020 93.9</b>	<b>996 91.7</b>	<b>997 91.8</b>	<b>999 92.0</b>	<b>1049 96.6</b>	<b>963 88.7</b>	<b>994 91.5</b>	<b>994 91.5</b>	<b>993 91.4</b>	<b>993 91.4</b>
<b>Powys Teaching HB</b>	<b>281</b>	<b>263 93.6</b>	<b>263 93.6</b>	<b>263 93.6</b>	<b>263 93.6</b>	<b>263 93.6</b>	<b>254 90.4</b>	<b>255 90.7</b>	<b>253 90.0</b>	<b>267 95.0</b>	<b>244 86.8</b>	<b>254 90.4</b>	<b>254 90.4</b>	<b>254 90.4</b>	<b>254 90.4</b>
Unknown	8	7 87.5	7 87.5	7 87.5	7 87.5	7 87.5	7 87.5	7 87.5	7 87.5	7 87.5	7 87.5	7 87.5	7 87.5	7 87.5	7 87.5
<b>Wales Total</b>	<b>8969</b>	<b>8508 94.9</b>	<b>8508 94.9</b>	<b>8507 94.8</b>	<b>8503 94.8</b>	<b>8504 94.8</b>	<b>8317 92.7</b>	<b>8336 92.9</b>	<b>8339 93.0</b>	<b>8728 97.3</b>	<b>8106 90.4</b>	<b>8353 93.1</b>	<b>8353 93.1</b>	<b>8351 93.1</b>	<b>8351 93.1</b>

<sup>1</sup> Completed three dose course, or two doses with the second delivered after 115 days of age

<sup>2</sup> Final (booster) dose of pneumococcal conjugate vaccine

**Table 8.** Uptake of HPV vaccine in girls reaching 13, 14 and 15 years of age between 01/09/16 and 31/08/17 and resident on 31/03/17.

Area	13 years (2016-17 School Year 8) <sup>1</sup>			14 years (2016-17 School Year 9) <sup>1</sup>					15 years (2016-17 School Year 10) <sup>2</sup>				
	Resident girls (n)	HPV 1 dose (n)	(%)	Resident girls (n)	HPV 1 dose (n)	(%)	HPV 2 dose (n)	(%)	Resident girls (n)	HPV 1 dose (n)	(%)	HPV 2 dose (n)	(%)
<b>Abertawe Bro Morgannwg University HB</b>													
Bridgend LA	811	646	79.7	782	726	92.8	595	76.1	741	694	93.7	672	90.7
Neath Port Talbot LA	742	655	88.3	700	649	92.7	570	81.4	715	678	94.8	656	91.7
Swansea LA	1225	982	80.2	1240	1119	90.2	855	69.0	1222	1150	94.1	1116	91.3
<b>Health Board Total</b>	<b>2778</b>	<b>2283</b>	<b>82.2</b>	<b>2722</b>	<b>2494</b>	<b>91.6</b>	<b>2020</b>	<b>74.2</b>	<b>2678</b>	<b>2522</b>	<b>94.2</b>	<b>2444</b>	<b>91.3</b>
<b>Aneurin Bevan University HB</b>													
Blaenau Gwent LA	371	1	0.3	322	284	88.2	2	0.6	372	352	94.6	336	90.3
Caerphilly LA	1018	12	1.2	983	820	83.4	8	0.8	947	893	94.3	838	88.5
Monmouthshire LA	515	2	0.4	535	435	81.3	9	1.7	509	409	80.4	385	75.6
Newport LA	890	6	0.7	900	736	81.8	7	0.8	929	801	86.2	741	79.8
Torfaen LA	480	1	0.2	475	414	87.2	4	0.8	491	449	91.4	424	86.4
<b>Health Board Total</b>	<b>3274</b>	<b>22</b>	<b>0.7</b>	<b>3215</b>	<b>2689</b>	<b>83.6</b>	<b>30</b>	<b>0.9</b>	<b>3248</b>	<b>2904</b>	<b>89.4</b>	<b>2724</b>	<b>83.9</b>
<b>Betsi Cadwaladr University HB</b>													
Anglesey LA	347	20	5.8	346	299	86.4	34	9.8	361	325	90.0	288	79.8
Conwy LA	555	236	42.5	550	466	84.7	229	41.6	539	492	91.3	451	83.7
Denbighshire LA	493	191	38.7	469	403	85.9	158	33.7	485	437	90.1	402	82.9
Flintshire LA	806	646	80.1	738	650	88.1	555	75.2	798	741	92.9	678	85.0
Gwynedd LA	549	447	81.4	557	493	88.5	444	79.7	555	492	88.6	479	86.3
Wrexham LA	711	510	71.7	681	573	84.1	453	66.5	651	581	89.2	543	83.4
<b>Health Board Total</b>	<b>3461</b>	<b>2050</b>	<b>59.2</b>	<b>3341</b>	<b>2884</b>	<b>86.3</b>	<b>1873</b>	<b>56.1</b>	<b>3389</b>	<b>3068</b>	<b>90.5</b>	<b>2841</b>	<b>83.8</b>
<b>Cardiff and Vale University HB</b>													
Cardiff LA	1923	895	46.5	1872	1568	83.8	789	42.1	1729	1486	85.9	1401	81.0
Vale of Glamorgan LA	724	474	65.5	698	619	88.7	490	70.2	661	605	91.5	561	84.9
<b>Health Board Total</b>	<b>2647</b>	<b>1369</b>	<b>51.7</b>	<b>2570</b>	<b>2187</b>	<b>85.1</b>	<b>1279</b>	<b>49.8</b>	<b>2390</b>	<b>2091</b>	<b>87.5</b>	<b>1962</b>	<b>82.1</b>
<b>Cwm Taf University HB</b>													
Merthyr Tydfil LA	318	1	0.3	331	299	90.3	1	0.3	287	267	93.0	263	91.6
Rhondda Cynon Taf LA	1292	31	2.4	1380	1267	91.8	32	2.3	1220	1164	95.4	1141	93.5
<b>Health Board Total</b>	<b>1610</b>	<b>32</b>	<b>2.0</b>	<b>1711</b>	<b>1566</b>	<b>91.5</b>	<b>33</b>	<b>1.9</b>	<b>1507</b>	<b>1431</b>	<b>95.0</b>	<b>1404</b>	<b>93.2</b>
<b>Hywel Dda University HB</b>													
Carmarthenshire LA	952	198	20.8	979	878	89.7	257	26.3	941	863	91.7	840	89.3
Ceredigion LA	331	270	81.6	314	263	83.8	241	76.8	308	271	88.0	266	86.4
Pembrokeshire LA	643	533	82.9	615	519	84.4	482	78.4	537	460	85.7	444	82.7
<b>Health Board Total</b>	<b>1926</b>	<b>1001</b>	<b>52.0</b>	<b>1908</b>	<b>1660</b>	<b>87.0</b>	<b>980</b>	<b>51.4</b>	<b>1786</b>	<b>1594</b>	<b>89.2</b>	<b>1550</b>	<b>86.8</b>
<b>Powys Teaching HB</b>	<b>656</b>	<b>23</b>	<b>3.5</b>	<b>655</b>	<b>495</b>	<b>75.6</b>	<b>25</b>	<b>3.8</b>	<b>628</b>	<b>533</b>	<b>84.9</b>	<b>495</b>	<b>78.8</b>
Unknown	54	23	42.6	49	40	81.6	20	40.8	54	46	85.2	41	75.9
<b>Wales Total</b>	<b>16406</b>	<b>6803</b>	<b>41.5</b>	<b>16171</b>	<b>14015</b>	<b>86.7</b>	<b>6260</b>	<b>38.7</b>	<b>15680</b>	<b>14189</b>	<b>90.5</b>	<b>13461</b>	<b>85.8</b>

<sup>1</sup> Timings of HPV immunisation sessions vary between health boards and will not have been complete at the time this report was produced.

<sup>2</sup> Represents the first School Year 8 group (2014-15) to receive the two dose HPV schedule.

**Table 9.** Uptake of Men ACWY vaccine in teenagers reaching 14, 15, 16 and 17 years of age between 01/09/16 and 31/08/17 and resident on 31/03/17.

Area	14 years (2016-17 School Year 9) <sup>1</sup>			15 years (2016-17 School Year 10)			16 years (2016-17 School Year 11) <sup>1</sup>			17 years (2016-17 School Year 12)		
	Resident children (n)	MenACWY (n)	(%)	Resident children (n)	MenACWY (n)	(%)	Resident children (n)	MenACWY (n)	(%)	Resident children (n)	MenACWY (n)	(%)
<b>Abertawe Bro Morgannwg University HB</b>												
Bridgend LA	1561	31	2.0	1517	1370	90.3	1682	1437	85.4	1545	1348	87.2
Neath Port Talbot LA	1424	14	1.0	1460	1339	91.7	1524	1258	82.5	1513	1275	84.3
Swansea LA	2594	11	0.4	2497	2217	88.8	2550	2129	83.5	2649	2187	82.6
<b>Health Board Total</b>	<b>5579</b>	<b>56</b>	<b>1.0</b>	<b>5474</b>	<b>4926</b>	<b>90.0</b>	<b>5756</b>	<b>4824</b>	<b>83.8</b>	<b>5707</b>	<b>4810</b>	<b>84.3</b>
<b>Aneurin Bevan University HB</b>												
Blaenau Gwent LA	685	473	69.1	698	625	89.5	734	588	80.1	768	605	78.8
Caerphilly LA	2086	1056	50.6	2022	1736	85.9	2031	1596	78.6	2123	1630	76.8
Monmouthshire LA	1064	219	20.6	1034	786	76.0	1101	791	71.8	1155	798	69.1
Newport LA	1839	282	15.3	1868	1470	78.7	1791	1304	72.8	1922	1365	71.0
Torfaen LA	956	262	27.4	1016	881	86.7	1060	799	75.4	1006	755	75.0
<b>Health Board Total</b>	<b>6630</b>	<b>2292</b>	<b>34.6</b>	<b>6638</b>	<b>5498</b>	<b>82.8</b>	<b>6717</b>	<b>5078</b>	<b>75.6</b>	<b>6974</b>	<b>5153</b>	<b>73.9</b>
<b>Betsi Cadwaladr University HB</b>												
Anglesey LA	717	477	66.5	724	577	79.7	717	255	35.6	699	523	74.8
Conwy LA	1157	808	69.8	1118	945	84.5	1262	810	64.2	1302	979	75.2
Denbighshire LA	997	730	73.2	1043	818	78.4	1135	634	55.9	1094	778	71.1
Flintshire LA	1517	144	9.5	1584	1209	76.3	1615	1179	73.0	1635	1259	77.0
Gwynedd LA	1183	478	40.4	1172	921	78.6	1242	464	37.4	1253	980	78.2
Wrexham LA	1431	611	42.7	1317	1047	79.5	1445	1008	69.8	1540	1151	74.7
<b>Health Board Total</b>	<b>7002</b>	<b>3248</b>	<b>46.4</b>	<b>6958</b>	<b>5517</b>	<b>79.3</b>	<b>7416</b>	<b>4350</b>	<b>58.7</b>	<b>7523</b>	<b>5670</b>	<b>75.4</b>
<b>Cardiff and Vale University HB</b>												
Cardiff LA	3810	2485	65.2	3668	1950	53.2	3754	2731	72.7	3690	2777	75.3
Vale of Glamorgan LA	1477	1074	72.7	1345	837	62.2	1370	961	70.1	1481	1135	76.6
<b>Health Board Total</b>	<b>5287</b>	<b>3559</b>	<b>67.3</b>	<b>5013</b>	<b>2787</b>	<b>55.6</b>	<b>5124</b>	<b>3692</b>	<b>72.1</b>	<b>5171</b>	<b>3912</b>	<b>75.7</b>
<b>Cwm Taf University HB</b>												
Merthyr Tydfil LA	661	439	66.4	625	563	90.1	641	531	82.8	713	608	85.3
Rhondda Cynon Taf LA	2795	1695	60.6	2522	2313	91.7	2631	2231	84.8	2639	2262	85.7
<b>Health Board Total</b>	<b>3456</b>	<b>2134</b>	<b>61.7</b>	<b>3147</b>	<b>2876</b>	<b>91.4</b>	<b>3272</b>	<b>2762</b>	<b>84.4</b>	<b>3352</b>	<b>2870</b>	<b>85.6</b>
<b>Hywel Dda University HB</b>												
Cardiff LA	2017	8	0.4	2019	1777	88.0	2003	66	3.3	1989	1633	82.1
Ceredigion LA	658	369	56.1	612	526	85.9	666	270	40.5	685	581	84.8
Pembrokeshire LA	1214	105	8.6	1180	897	76.0	1232	507	41.2	1273	932	73.2
<b>Health Board Total</b>	<b>3889</b>	<b>482</b>	<b>12.4</b>	<b>3811</b>	<b>3200</b>	<b>84.0</b>	<b>3901</b>	<b>843</b>	<b>21.6</b>	<b>3947</b>	<b>3146</b>	<b>79.7</b>
<b>Powys Teaching HB</b>	<b>1350</b>	<b>477</b>	<b>35.3</b>	<b>1300</b>	<b>1073</b>	<b>82.5</b>	<b>1328</b>	<b>931</b>	<b>70.1</b>	<b>1402</b>	<b>1078</b>	<b>76.9</b>
Unknown	107	37	34.6	104	82	78.8	149	97	65.1	167	124	74.3
<b>Wales Total</b>	<b>33300</b>	<b>12285</b>	<b>36.9</b>	<b>32445</b>	<b>25959</b>	<b>80.0</b>	<b>33663</b>	<b>22577</b>	<b>67.1</b>	<b>34243</b>	<b>26763</b>	<b>78.2</b>

<sup>1</sup>Timings of MenACWY immunisation sessions vary between health boards and will have only just begun for School Year 9 and School Year 11 age groups at the time this report was produced.

**Table 10.** MMR, Td/IPV, MenC and MenACWY vaccine uptake in children reaching their 14th birthday between 01/09/16 and 31/08/17 and resident on 31/03/17 (2016-17 school year 9), with breakdown of MMR1 and MMR2 coverage by sex.

Area	Resident children		Teenage 3 in 1							Resident girls		MMR1 (girls)		MMR2 (girls)		Resident boys		MMR1 (boys)		MMR2 (boys)		
	(n)	(n) (%)	MMR1 (n) (%)	MMR2 (n) (%)	booster <sup>1,2</sup> (n) (%)	MenACWY <sup>2</sup> (n) (%)	(n)	(n) (%)	(n)	(n) (%)	(n)	(n) (%)	(n)	(n) (%)	(n)	(n) (%)	(n)	(n) (%)	(n)	(n) (%)		
<b>Abertawe Bro Morgannwg University HB</b>																						
Bridgend LA	1561	1468 94.0	1381 88.5	40 2.6	31 2.0	782	738 94.4	698 89.3	779	730 93.7	683 87.7											
Neath Port Talbot LA	1424	1363 95.7	1279 89.8	16 1.1	14 1.0	700	675 96.4	643 91.9	724	688 95.0	636 87.8											
Swansea LA	2594	2366 91.2	2226 85.8	44 1.7	11 0.4	1240	1120 90.3	1062 85.6	1354	1246 92.0	1164 86.0											
<b>Health Board Total</b>	<b>5579</b>	<b>5197 93.2</b>	<b>4886 87.6</b>	<b>100 1.8</b>	<b>56 1.0</b>	<b>2722</b>	<b>2533 93.1</b>	<b>2403 88.3</b>	<b>2857</b>	<b>2664 93.2</b>	<b>2483 86.9</b>											
<b>Aneurin Bevan University HB</b>																						
Blaenau Gwent LA	685	649 94.7	622 90.8	476 69.5	473 69.1	322	305 94.7	292 90.7	363	344 94.8	330 90.9											
Caerphilly LA	2086	2000 95.9	1907 91.4	1063 51.0	1056 50.6	983	940 95.6	900 91.6	1102	1060 96.2	1007 91.4											
Monmouthshire LA	1064	951 89.4	892 83.8	227 21.3	219 20.6	535	474 88.6	438 81.9	529	477 90.2	454 85.8											
Newport LA	1839	1678 91.2	1572 85.5	288 15.7	282 15.3	900	824 91.6	772 85.8	937	854 91.1	800 85.4											
Torfaen LA	956	900 94.1	859 89.9	271 28.3	262 27.4	475	451 94.9	429 90.3	481	449 93.3	430 89.4											
<b>Health Board Total</b>	<b>6630</b>	<b>6178 93.2</b>	<b>5852 88.3</b>	<b>2325 35.1</b>	<b>2292 34.6</b>	<b>3215</b>	<b>2994 93.1</b>	<b>2831 88.1</b>	<b>3412</b>	<b>3184 93.3</b>	<b>3021 88.5</b>											
<b>Betsi Cadwaladr University HB</b>																						
Anglesey LA	717	672 93.7	645 90.0	470 65.6	477 66.5	346	328 94.8	313 90.5	371	344 92.7	332 89.5											
Conwy LA	1157	1080 93.3	1043 90.1	807 69.7	808 69.8	550	516 93.8	500 90.9	605	562 92.9	541 89.4											
Denbighshire LA	997	927 93.0	882 88.5	724 72.6	730 73.2	469	434 92.5	413 88.1	528	493 93.4	469 88.8											
Flintshire LA	1517	1423 93.8	1361 89.7	99 6.5	144 9.5	738	690 93.5	661 89.6	779	733 94.1	700 89.9											
Gwynedd LA	1183	1129 95.4	1086 91.8	468 39.6	478 40.4	557	539 96.8	520 93.4	626	590 94.2	566 90.4											
Wrexham LA	1431	1343 93.9	1296 90.6	545 38.1	611 42.7	681	638 93.7	614 90.2	750	705 94.0	682 90.9											
<b>Health Board Total</b>	<b>7002</b>	<b>6574 93.9</b>	<b>6313 90.2</b>	<b>3113 44.5</b>	<b>3248 46.4</b>	<b>3341</b>	<b>3145 94.1</b>	<b>3021 90.4</b>	<b>3659</b>	<b>3427 93.7</b>	<b>3290 89.9</b>											
<b>Cardiff and Vale University HB</b>																						
Cardiff LA	3810	3511 92.2	3255 85.4	2480 65.1	2485 65.2	1872	1737 92.8	1623 86.7	1938	1774 91.5	1632 84.2											
Vale of Glamorgan LA	1477	1387 93.9	1311 88.8	1077 72.9	1074 72.7	698	650 93.1	607 87.0	779	737 94.6	704 90.4											
<b>Health Board Total</b>	<b>5287</b>	<b>4898 92.6</b>	<b>4566 86.4</b>	<b>3557 67.3</b>	<b>3559 67.3</b>	<b>2570</b>	<b>2387 92.9</b>	<b>2230 86.8</b>	<b>2717</b>	<b>2511 92.4</b>	<b>2336 86.0</b>											
<b>Cwm Taf University HB</b>																						
Merthyr Tydfil LA	661	621 93.9	586 88.7	439 66.4	439 66.4	331	315 95.2	301 90.9	330	306 92.7	285 86.4											
Rhondda Cynon Taf LA	2795	2654 95.0	2526 90.4	1574 56.3	1695 60.6	1380	1321 95.7	1270 92.0	1415	1333 94.2	1256 88.8											
<b>Health Board Total</b>	<b>3456</b>	<b>3275 94.8</b>	<b>3112 90.0</b>	<b>2013 58.2</b>	<b>2134 61.7</b>	<b>1711</b>	<b>1636 95.6</b>	<b>1571 91.8</b>	<b>1745</b>	<b>1639 93.9</b>	<b>1541 88.3</b>											
<b>Hywel Dda University HB</b>																						
Cardemarthenshire LA	2017	1857 92.1	1768 87.7	25 1.2	8 0.4	979	904 92.3	867 88.6	1038	953 91.8	901 86.8											
Ceredigion LA	658	614 93.3	587 89.2	371 56.4	369 56.1	314	293 93.3	280 89.2	344	321 93.3	307 89.2											
Pembrokeshire LA	1214	1103 90.9	1034 85.2	118 9.7	105 8.6	615	561 91.2	525 85.4	599	542 90.5	509 85.0											
<b>Health Board Total</b>	<b>3889</b>	<b>3574 91.9</b>	<b>3389 87.1</b>	<b>514 13.2</b>	<b>482 12.4</b>	<b>1908</b>	<b>1758 92.1</b>	<b>1672 87.6</b>	<b>1981</b>	<b>1816 91.7</b>	<b>1717 86.7</b>											
<b>Powys Teaching HB</b>	<b>1350</b>	<b>1165 86.3</b>	<b>1057 78.3</b>	<b>487 36.1</b>	<b>477 35.3</b>	<b>655</b>	<b>564 86.1</b>	<b>519 79.2</b>	<b>695</b>	<b>601 86.5</b>	<b>538 77.4</b>											
Unknown	107	87 81.3	81 75.7	36 33.6	37 34.6	49	43 87.8	39 79.6	58	44 75.9	42 72.4											
<b>Wales Total</b>	<b>33300</b>	<b>30948 92.9</b>	<b>29256 87.9</b>	<b>12145 36.5</b>	<b>12285 36.9</b>	<b>16171</b>	<b>15060 93.1</b>	<b>14286 88.3</b>	<b>17124</b>	<b>15886 92.8</b>	<b>14968 87.4</b>											

<sup>1</sup> Teenage booster dose of diphtheria, tetanus and polio (diphtheria used as proxy)

<sup>2</sup> Timings of immunisation sessions vary between health boards and will not have been complete at the time this report was produced.

**Table 11.** MMR, Td/IPV, MenC and MenACWY vaccine uptake in children reaching their 15th birthday between 01/09/16 and 31/08/17 and resident on 31/03/17 (2016-17 school year 10), with breakdown of MMR1 and MMR2 coverage by sex

Area	Resident children		Teenage 3 in 1							Resident girls		MMR1 (girls)		MMR2 (girls)		Resident boys		MMR1 (boys)		MMR2 (boys)	
	(n)	(n) (%)	MMR1 (n) (%)	MMR2 (n) (%)	booster <sup>1</sup> (n) (%)	MenACWY (n) (%)	(n)	(n) (%)	(n) (%)	(n) (%)	(n) (%)	(n) (%)	(n) (%)	(n) (%)	(n) (%)	(n) (%)	(n) (%)	(n) (%)			
<b><u>Abertawe Bro Morgannwg University HB</u></b>																					
Bridgend LA	1517	1422 93.7	1328 87.5	1363 89.8	1370 90.3		741	698 94.2	656 88.5	776	724 93.3	672 86.6									
Neath Port Talbot LA	1460	1352 92.6	1248 85.5	1320 90.4	1339 91.7		715	676 94.5	625 87.4	745	676 90.7	623 83.6									
Swansea LA	2497	2286 91.5	2129 85.3	2206 88.3	2217 88.8		1222	1129 92.4	1054 86.3	1275	1157 90.7	1075 84.3									
<b>Health Board Total</b>	<b>5474</b>	<b>5060 92.4</b>	<b>4705 86.0</b>	<b>4889 89.3</b>	<b>4926 90.0</b>		<b>2678</b>	<b>2503 93.5</b>	<b>2335 87.2</b>	<b>2796</b>	<b>2557 91.5</b>	<b>2370 84.8</b>									
<b><u>Aneurin Bevan University HB</u></b>																					
Blaenau Gwent LA	698	662 94.8	630 90.3	624 89.4	625 89.5		372	353 94.9	340 91.4	326	309 94.8	290 89.0									
Caerphilly LA	2022	1946 96.2	1852 91.6	1746 86.4	1736 85.9		947	911 96.2	863 91.1	1075	1035 96.3	989 92.0									
Monmouthshire LA	1034	877 84.8	813 78.6	791 76.5	786 76.0		509	429 84.3	404 79.4	524	448 85.5	409 78.1									
Newport LA	1868	1689 90.4	1574 84.3	1482 79.3	1470 78.7		929	841 90.5	795 85.6	937	847 90.4	779 83.1									
Torfaen LA	1016	954 93.9	905 89.1	881 86.7	881 86.7		491	460 93.7	438 89.2	525	494 94.1	467 89.0									
<b>Health Board Total</b>	<b>6638</b>	<b>6128 92.3</b>	<b>5774 87.0</b>	<b>5524 83.2</b>	<b>5498 82.8</b>		<b>3248</b>	<b>2994 92.2</b>	<b>2840 87.4</b>	<b>3387</b>	<b>3133 92.5</b>	<b>2934 86.6</b>									
<b><u>Betsi Cadwaladr University HB</u></b>																					
Anglesey LA	724	681 94.1	666 92.0	592 81.8	577 79.7		361	338 93.6	332 92.0	363	343 94.5	334 92.0									
Conwy LA	1118	1046 93.6	1000 89.4	939 84.0	945 84.5		539	506 93.9	482 89.4	578	539 93.3	517 89.4									
Denbighshire LA	1043	964 92.4	916 87.8	838 80.3	818 78.4		485	442 91.1	421 86.8	558	522 93.5	495 88.7									
Flintshire LA	1584	1481 93.5	1416 89.4	1227 77.5	1209 76.3		798	743 93.1	715 89.6	786	738 93.9	701 89.2									
Gwynedd LA	1172	1104 94.2	1065 90.9	914 78.0	921 78.6		555	525 94.6	506 91.2	617	579 93.8	559 90.6									
Wrexham LA	1317	1256 95.4	1232 93.5	1049 79.7	1047 79.5		651	623 95.7	616 94.6	666	633 95.0	616 92.5									
<b>Health Board Total</b>	<b>6958</b>	<b>6532 93.9</b>	<b>6295 90.5</b>	<b>5559 79.9</b>	<b>5517 79.3</b>		<b>3389</b>	<b>3177 93.7</b>	<b>3072 90.6</b>	<b>3568</b>	<b>3354 94.0</b>	<b>3222 90.3</b>									
<b><u>Cardiff and Vale University HB</u></b>																					
Cardiff LA	3668	3329 90.8	3067 83.6	2577 70.3	1950 53.2		1729	1564 90.5	1445 83.6	1938	1765 91.1	1622 83.7									
Vale of Glamorgan LA	1345	1252 93.1	1181 87.8	1069 79.5	837 62.2		661	627 94.9	597 90.3	684	625 91.4	584 85.4									
<b>Health Board Total</b>	<b>5013</b>	<b>4581 91.4</b>	<b>4248 84.7</b>	<b>3646 72.7</b>	<b>2787 55.6</b>		<b>2390</b>	<b>2191 91.7</b>	<b>2042 85.4</b>	<b>2622</b>	<b>2390 91.2</b>	<b>2206 84.1</b>									
<b><u>Cwm Taf University HB</u></b>																					
Merthyr Tydfil LA	625	594 95.0	549 87.8	561 89.8	563 90.1		287	276 96.2	256 89.2	337	318 94.4	293 86.9									
Rhondda Cynon Taf LA	2522	2384 94.5	2245 89.0	2303 91.3	2313 91.7		1220	1166 95.6	1106 90.7	1302	1218 93.5	1139 87.5									
<b>Health Board Total</b>	<b>3147</b>	<b>2978 94.6</b>	<b>2794 88.8</b>	<b>2864 91.0</b>	<b>2876 91.4</b>		<b>1507</b>	<b>1442 95.7</b>	<b>1362 90.4</b>	<b>1639</b>	<b>1536 93.7</b>	<b>1432 87.4</b>									
<b><u>Hywel Dda University HB</u></b>																					
Cardiff LA	2019	1859 92.1	1814 89.8	1780 88.2	1777 88.0		941	867 92.1	844 89.7	1078	992 92.0	970 90.0									
Ceredigion LA	612	566 92.5	540 88.2	529 86.4	526 85.9		308	287 93.2	277 89.9	304	279 91.8	263 86.5									
Pembrokeshire LA	1180	1084 91.9	1016 86.1	915 77.5	897 76.0		537	498 92.7	468 87.2	643	586 91.1	548 85.2									
<b>Health Board Total</b>	<b>3811</b>	<b>3509 92.1</b>	<b>3370 88.4</b>	<b>3224 84.6</b>	<b>3200 84.0</b>		<b>1786</b>	<b>1652 92.5</b>	<b>1589 89.0</b>	<b>2025</b>	<b>1857 91.7</b>	<b>1781 88.0</b>									
<b><u>Powys Teaching HB</u></b>																					
Unknown	104	95 91.3	91 87.5	78 75.0	82 78.8		54	49 90.7	47 87.0	50	46 92.0	44 88.0									
<b>Wales Total</b>	<b>32445</b>	<b>30051 92.6</b>	<b>28347 87.4</b>	<b>26847 82.7</b>	<b>25959 80.0</b>		<b>15680</b>	<b>14580 93.0</b>	<b>13816 88.1</b>	<b>16759</b>	<b>15469 92.3</b>	<b>14530 86.7</b>									

<sup>1</sup> Teenage booster dose of diphtheria, tetanus and polio (diphtheria used as proxy)

**Table 12.** MMR, Td/IPV, MenC and MenACWY vaccine uptake in children reaching their 16th birthday between 01/09/16 and 31/08/17 and resident on 31/03/17 (2016-17 school year 11), with breakdown of MMR1 and MMR2 coverage by sex

Area	Resident children		Teenage 3 in 1						Resident girls		MMR1 (girls)		MMR2 (girls)		Resident boys		MMR1 (boys)		MMR2 (boys)	
	(n)	(n) (%)	(n)	(%)	(n)	(%)	booster <sup>1</sup>	(n)	(%)	(n)	(n) (%)	(n) (%)	(n) (%)	(n) (%)	(n) (%)	(n) (%)	(n) (%)			
<b>Abertawe Bro Morgannwg University HB</b>	(n)	(n) (%)	(n)	(%)	(n)	(%)	booster <sup>1</sup>	(n)	(%)	(n)	(n) (%)	(n) (%)	(n) (%)	(n) (%)	(n) (%)	(n) (%)	(n) (%)			
Bridgend LA	1682	1606 95.5	1525	90.7	1507	89.6	1437	85.4	846	805 95.2	764 90.3	836	801 95.8	761 91.0						
Neath Port Talbot LA	1524	1438 94.4	1327	87.1	1349	88.5	1258	82.5	722	695 96.3	651 90.2	802	743 92.6	676 84.3						
Swansea LA	2550	2347 92.0	2161	84.7	2210	86.7	2129	83.5	1281	1184 92.4	1104 86.2	1269	1163 91.6	1057 83.3						
<b>Health Board Total</b>	<b>5756</b>	<b>5391 93.7</b>	<b>5013 87.1</b>	<b>5066 88.0</b>	<b>4824 83.8</b>				<b>2849</b>	<b>2684 94.2</b>	<b>2519 88.4</b>	<b>2907</b>	<b>2707 93.1</b>	<b>2494 85.8</b>						
<b>Aneurin Bevan University HB</b>																				
Blaenau Gwent LA	734	693 94.4	663 90.3	620 84.5	588 80.1				361	337 93.4	321 88.9	373	356 95.4	342 91.7						
Caerphilly LA	2031	1968 96.9	1907 93.9	1699 83.7	1596 78.6				968	935 96.6	891 92.0	1063	1033 97.2	1016 95.6						
Monmouthshire LA	1101	950 86.3	870 79.0	840 76.3	791 71.8				527	458 86.9	431 81.8	574	492 85.7	439 76.5						
Newport LA	1791	1662 92.8	1556 86.9	1462 81.6	1304 72.8				865	803 92.8	753 87.1	925	858 92.8	802 86.7						
Torfaen LA	1060	1014 95.7	974 91.9	925 87.3	799 75.4				514	492 95.7	472 91.8	546	522 95.6	502 91.9						
<b>Health Board Total</b>	<b>6717</b>	<b>6287 93.6</b>	<b>5970 88.9</b>	<b>5546 82.6</b>	<b>5078 75.6</b>				<b>3235</b>	<b>3025 93.5</b>	<b>2868 88.7</b>	<b>3481</b>	<b>3261 93.7</b>	<b>3101 89.1</b>						
<b>Betsi Cadwaladr University HB</b>																				
Anglesey LA	717	677 94.4	660 92.1	592 82.6	255 35.6				356	337 94.7	327 91.9	361	340 94.2	333 92.2						
Conwy LA	1262	1158 91.8	1081 85.7	1030 81.6	810 64.2				629	580 92.2	547 87.0	633	578 91.3	534 84.4						
Denbighshire LA	1135	1041 91.7	987 87.0	968 85.3	634 55.9				551	509 92.4	486 88.2	583	532 91.3	501 85.9						
Flintshire LA	1615	1528 94.6	1463 90.6	1393 86.3	1179 73.0				796	761 95.6	731 91.8	819	767 93.7	732 89.4						
Gwynedd LA	1242	1183 95.2	1146 92.3	1072 86.3	464 37.4				600	577 96.2	557 92.8	642	606 94.4	589 91.7						
Wrexham LA	1445	1386 95.9	1332 92.2	1242 86.0	1008 69.8				709	681 96.1	648 91.4	736	705 95.8	684 92.9						
<b>Health Board Total</b>	<b>7416</b>	<b>6973 94.0</b>	<b>6669 89.9</b>	<b>6297 84.9</b>	<b>4350 58.7</b>				<b>3641</b>	<b>3445 94.6</b>	<b>3296 90.5</b>	<b>3774</b>	<b>3528 93.5</b>	<b>3373 89.4</b>						
<b>Cardiff and Vale University HB</b>																				
Cardiff LA	3754	3419 91.1	3173 84.5	2778 74.0	2731 72.7				1760	1615 91.8	1508 85.7	1994	1804 90.5	1665 83.5						
Vale of Glamorgan LA	1370	1282 93.6	1196 87.3	1098 80.1	961 70.1				668	625 93.6	586 87.7	702	657 93.6	610 86.9						
<b>Health Board Total</b>	<b>5124</b>	<b>4701 91.7</b>	<b>4369 85.3</b>	<b>3876 75.6</b>	<b>3692 72.1</b>				<b>2428</b>	<b>2240 92.3</b>	<b>2094 86.2</b>	<b>2696</b>	<b>2461 91.3</b>	<b>2275 84.4</b>						
<b>Cwm Taf University HB</b>																				
Merthyr Tydfil LA	641	605 94.4	565 88.1	587 91.6	531 82.8				306	290 94.8	272 88.9	335	315 94.0	293 87.5						
Rhondda Cynon Taf LA	2631	2516 95.6	2357 89.6	2414 91.8	2231 84.8				1281	1234 96.3	1163 90.8	1349	1282 95.0	1194 88.5						
<b>Health Board Total</b>	<b>3272</b>	<b>3121 95.4</b>	<b>2922 89.3</b>	<b>3001 91.7</b>	<b>2762 84.4</b>				<b>1587</b>	<b>1524 96.0</b>	<b>1435 90.4</b>	<b>1684</b>	<b>1597 94.8</b>	<b>1487 88.3</b>						
<b>Hywel Dda University HB</b>																				
Carmarthenshire LA	2003	1857 92.7	1796 89.7	1768 88.3	66 3.3				973	918 94.3	892 91.7	1030	939 91.2	904 87.8						
Ceredigion LA	666	624 93.7	601 90.2	586 88.0	270 40.5				307	293 95.4	285 92.8	359	331 92.2	316 88.0						
Pembrokeshire LA	1232	1136 92.2	1081 87.7	966 78.4	507 41.2				559	520 93.0	492 88.0	673	616 91.5	589 87.5						
<b>Health Board Total</b>	<b>3901</b>	<b>3617 92.7</b>	<b>3478 89.2</b>	<b>3320 85.1</b>	<b>843 21.6</b>				<b>1839</b>	<b>1731 94.1</b>	<b>1669 90.8</b>	<b>2062</b>	<b>1886 91.5</b>	<b>1809 87.7</b>						
<b>Powys Teaching HB</b>	<b>1328</b>	<b>1183 89.1</b>	<b>1104 83.1</b>	<b>1076 81.0</b>	<b>931 70.1</b>				<b>624</b>	<b>562 90.1</b>	<b>520 83.3</b>	<b>702</b>	<b>621 88.5</b>	<b>584 83.2</b>						
Unknown	149	131 87.9	124 83.2	113 75.8	97 65.1				70	61 87.1	59 84.3	79	70 88.6	65 82.3						
<b>Wales Total</b>	<b>33663</b>	<b>31404 93.3</b>	<b>29649 88.1</b>	<b>28295 84.1</b>	<b>22577 67.1</b>				<b>16273</b>	<b>15272 93.8</b>	<b>14460 88.9</b>	<b>17385</b>	<b>16131 92.8</b>	<b>15188 87.4</b>						

<sup>1</sup> Teenage booster dose of diphtheria, tetanus and polio (diphtheria used as proxy)

<sup>2</sup> Timings of MenACWY immunisation sessions vary between health boards and will not have been complete at the time this report was produced.

**Table 13.** MMR, Td/IPV, MenC and MenACWY vaccine uptake in children reaching their 16th birthday between 01/01/17 and 31/03/17 and resident on 31/03/17, with breakdown of MMR1 and MMR2 coverage by sex

Area	Resident children		Teenage 3 in 1							Resident girls		MMR1 (girls)		MMR2 (girls)		Resident boys		MMR1 (boys)		MMR2 (boys)	
	(n)	MMR1 (%)	MMR2 (%)	booster <sup>1</sup> (n)	booster <sup>1</sup> (%)	MenACWY <sup>2</sup> (n)	MenACWY <sup>2</sup> (%)	(n)	(%)	(n)	(%)	(n)	(%)	(n)	(%)	(n)	(%)	(n)	(%)		
<b>Abertawe Bro Morgannwg University HB</b>	412	387	93.9	360	87.4	367	89.1	276	67.0	213	200	93.9	184	86.4	199	187	94.0	176	88.4		
Bridgend LA	374	353	94.4	323	86.4	328	87.7	224	59.9	177	171	96.6	161	91.0	197	182	92.4	162	82.2		
Neath Port Talbot LA	653	593	90.8	544	83.3	555	85.0	346	53.0	333	308	92.5	287	86.2	320	285	89.1	257	80.3		
<b>Health Board Total</b>	<b>1439</b>	<b>1333</b>	<b>92.6</b>	<b>1227</b>	<b>85.3</b>	<b>1250</b>	<b>86.9</b>	<b>846</b>	<b>58.8</b>	<b>723</b>	<b>679</b>	<b>93.9</b>	<b>632</b>	<b>87.4</b>	<b>716</b>	<b>654</b>	<b>91.3</b>	<b>595</b>	<b>83.1</b>		
<b>Aneurin Bevan University HB</b>	185	172	93.0	165	89.2	157	84.9	94	50.8	99	90	90.9	88	88.9	86	82	95.3	77	89.5		
Blaenau Gwent LA	516	504	97.7	488	94.6	423	82.0	256	49.6	236	228	96.6	217	91.9	280	276	98.6	271	96.8		
Caerphilly LA	286	251	87.8	231	80.8	219	76.6	181	63.3	130	116	89.2	111	85.4	156	135	86.5	120	76.9		
Monmouthshire LA	452	407	90.0	381	84.3	377	83.4	212	46.9	228	201	88.2	186	81.6	224	206	92.0	195	87.1		
Newport LA	247	230	93.1	222	89.9	218	88.3	134	54.3	118	111	94.1	106	89.8	129	119	92.2	116	89.9		
Torfaen LA																					
<b>Health Board Total</b>	<b>1686</b>	<b>1564</b>	<b>92.8</b>	<b>1487</b>	<b>88.2</b>	<b>1394</b>	<b>82.7</b>	<b>877</b>	<b>52.0</b>	<b>811</b>	<b>746</b>	<b>92.0</b>	<b>708</b>	<b>87.3</b>	<b>875</b>	<b>818</b>	<b>93.5</b>	<b>779</b>	<b>89.0</b>		
<b>Betsi Cadwaladr University HB</b>	184	173	94.0	171	92.9	156	84.8	15	8.2	80	77	96.3	75	93.8	104	96	92.3	96	92.3		
Anglesey LA	323	294	91.0	273	84.5	250	77.4	127	39.3	186	170	91.4	157	84.4	137	124	90.5	116	84.7		
Conwy LA	275	257	93.5	231	84.0	229	83.3	81	29.5	119	108	90.8	99	83.2	156	149	95.5	132	84.6		
Denbighshire LA	433	403	93.1	381	88.0	374	86.4	160	37.0	218	207	95.0	195	89.4	215	196	91.2	186	86.5		
Flintshire LA	284	269	94.7	263	92.6	239	84.2	57	20.1	153	145	94.8	140	91.5	131	124	94.7	123	93.9		
Gwynedd LA	379	364	96.0	350	92.3	327	86.3	203	53.6	186	179	96.2	169	90.9	193	185	95.9	181	93.8		
Wrexham LA																					
<b>Health Board Total</b>	<b>1878</b>	<b>1760</b>	<b>93.7</b>	<b>1669</b>	<b>88.9</b>	<b>1575</b>	<b>83.9</b>	<b>643</b>	<b>34.2</b>	<b>942</b>	<b>886</b>	<b>94.1</b>	<b>835</b>	<b>88.6</b>	<b>936</b>	<b>874</b>	<b>93.4</b>	<b>834</b>	<b>89.1</b>		
<b>Cardiff and Vale University HB</b>	943	853	90.5	792	84.0	695	73.7	368	39.0	423	383	90.5	355	83.9	520	470	90.4	437	84.0		
Cardiff LA	352	334	94.9	317	90.1	291	82.7	113	32.1	178	167	93.8	159	89.3	174	167	96.0	158	90.8		
Vale of Glamorgan LA																					
<b>Health Board Total</b>	<b>1295</b>	<b>1187</b>	<b>91.7</b>	<b>1109</b>	<b>85.6</b>	<b>986</b>	<b>76.1</b>	<b>481</b>	<b>37.1</b>	<b>601</b>	<b>550</b>	<b>91.5</b>	<b>514</b>	<b>85.5</b>	<b>694</b>	<b>637</b>	<b>91.8</b>	<b>595</b>	<b>85.7</b>		
<b>Cwm Taf University HB</b>	172	165	95.9	153	89.0	160	93.0	92	53.5	85	81	95.3	76	89.4	87	84	96.6	77	88.5		
Merthyr Tydfil LA	658	631	95.9	589	89.5	612	93.0	358	54.4	314	303	96.5	281	89.5	344	328	95.3	308	89.5		
Rhondda Cynon Taf LA																					
<b>Health Board Total</b>	<b>830</b>	<b>796</b>	<b>95.9</b>	<b>742</b>	<b>89.4</b>	<b>772</b>	<b>93.0</b>	<b>450</b>	<b>54.2</b>	<b>399</b>	<b>384</b>	<b>96.2</b>	<b>357</b>	<b>89.5</b>	<b>431</b>	<b>412</b>	<b>95.6</b>	<b>385</b>	<b>89.3</b>		
<b>Hywel Dda University HB</b>	484	442	91.3	426	88.0	425	87.8	12	2.5	225	212	94.2	206	91.6	259	230	88.8	220	84.9		
Carmarthenshire LA	179	163	91.1	156	87.2	161	89.9	28	15.6	85	78	91.8	77	90.6	94	85	90.4	79	84.0		
Ceredigion LA	313	290	92.7	275	87.9	235	75.1	3	1.0	140	128	91.4	121	86.4	173	162	93.6	154	89.0		
Pembrokeshire LA																					
<b>Health Board Total</b>	<b>976</b>	<b>895</b>	<b>91.7</b>	<b>857</b>	<b>87.8</b>	<b>821</b>	<b>84.1</b>	<b>43</b>	<b>4.4</b>	<b>450</b>	<b>418</b>	<b>92.9</b>	<b>404</b>	<b>89.8</b>	<b>526</b>	<b>477</b>	<b>90.7</b>	<b>453</b>	<b>86.1</b>		
<b>Powys Teaching HB</b>	351	304	86.6	285	81.2	289	82.3	160	45.6	168	144	85.7	134	79.8	183	160	87.4	151	82.5		
Unknown	36	34	94.4	30	83.3	27	75.0	14	38.9	18	16	88.9	16	88.9	18	18	100.0	14	77.8		
<b>Wales Total</b>	<b>8491</b>	<b>7873</b>	<b>92.7</b>	<b>7406</b>	<b>87.2</b>	<b>7114</b>	<b>83.8</b>	<b>3514</b>	<b>41.4</b>	<b>4112</b>	<b>3823</b>	<b>93.0</b>	<b>3600</b>	<b>87.5</b>	<b>4379</b>	<b>4050</b>	<b>92.5</b>	<b>3806</b>	<b>86.9</b>		

<sup>1</sup> Teenage booster dose of diphtheria, tetanus and polio (diphtheria used as proxy)

<sup>2</sup> Timings of MenACWY immunisation sessions vary between health boards and will not have been complete at the time this report was produced.

**Table 14.** Uptake of BCG immunisation in children reaching their 1st, 2nd, 5th and 16th birthdays between 01/01/17 and 31/03/17 and resident on 31/03/17.

Area	1 yr			2 yrs			5 yrs			16 yrs		
	Resident children	BCG Immunised	(%)	Resident children	BCG Immunised	(%)	Resident children	BCG Immunised	(%)	Resident children	BCG Immunised	(%)
<b><u>Abertawe Bro Morgannwg University HB</u></b>	(n)	(n)	(%)	(n)	(n)	(%)	(n)	(n)	(%)	(n)	(n)	(%)
Bridgend LA	365	14	3.8	352	20	5.7	399	18	4.5	412	7	1.7
Neath Port Talbot LA	382	16	4.2	376	25	6.6	414	14	3.4	374	5	1.3
Swansea LA	643	61	9.5	614	96	15.6	720	68	9.4	653	33	5.1
<b>Health Board Total</b>	<b>1390</b>	<b>91</b>	<b>6.5</b>	<b>1342</b>	<b>141</b>	<b>10.5</b>	<b>1533</b>	<b>100</b>	<b>6.5</b>	<b>1439</b>	<b>45</b>	<b>3.1</b>
<b><u>Aneurin Bevan University HB</u></b>												
Blaenau Gwent LA	163	3	1.8	198	6	3.0	175	7	4.0	185	0	0.0
Caerphilly LA	509	18	3.5	482	19	3.9	524	16	3.1	516	3	0.6
Monmouthshire LA	177	9	5.1	201	8	4.0	249	10	4.0	286	11	3.8
Newport LA	468	63	13.5	497	78	15.7	490	59	12.0	452	26	5.8
Torfaen LA	252	4	1.6	213	4	1.9	300	7	2.3	247	3	1.2
<b>Health Board Total</b>	<b>1569</b>	<b>97</b>	<b>6.2</b>	<b>1591</b>	<b>115</b>	<b>7.2</b>	<b>1738</b>	<b>99</b>	<b>5.7</b>	<b>1686</b>	<b>43</b>	<b>2.6</b>
<b><u>Betsi Cadwaladr University HB</u></b>												
Anglesey LA	168	0	0.0	165	2	1.2	209	6	2.9	184	4	2.2
Conwy LA	280	11	3.9	265	13	4.9	288	12	4.2	323	8	2.5
Denbighshire LA	224	12	5.4	242	4	1.7	238	8	3.4	275	8	2.9
Flintshire LA	356	7	2.0	363	6	1.7	447	18	4.0	433	8	1.8
Gwynedd LA	292	17	5.8	264	15	5.7	340	15	4.4	284	9	3.2
Wrexham LA	363	30	8.3	357	25	7.0	403	31	7.7	379	11	2.9
<b>Health Board Total</b>	<b>1683</b>	<b>77</b>	<b>4.6</b>	<b>1656</b>	<b>65</b>	<b>3.9</b>	<b>1925</b>	<b>90</b>	<b>4.7</b>	<b>1878</b>	<b>48</b>	<b>2.6</b>
<b><u>Cardiff and Vale University HB</u></b>												
Cardiff LA	1088	137	12.6	1086	251	23.1	1172	229	19.5	943	143	15.2
Vale of Glamorgan LA	317	2	0.6	345	12	3.5	372	10	2.7	352	15	4.3
<b>Health Board Total</b>	<b>1405</b>	<b>139</b>	<b>9.9</b>	<b>1431</b>	<b>263</b>	<b>18.4</b>	<b>1544</b>	<b>239</b>	<b>15.5</b>	<b>1295</b>	<b>158</b>	<b>12.2</b>
<b><u>Cwm Taf Univeristy HB</u></b>												
Merthyr Tydfil LA	185	15	8.1	179	10	5.6	183	15	8.2	172	2	1.2
Rhondda Cynon Taf LA	716	30	4.2	652	35	5.4	671	22	3.3	658	12	1.8
<b>Health Board Total</b>	<b>901</b>	<b>45</b>	<b>5.0</b>	<b>831</b>	<b>45</b>	<b>5.4</b>	<b>854</b>	<b>37</b>	<b>4.3</b>	<b>830</b>	<b>14</b>	<b>1.7</b>
<b><u>Hywel Dda University HB</u></b>												
Carmarthenshire LA	469	17	3.6	467	20	4.3	551	17	3.1	484	42	8.7
Ceredigion LA	161	8	5.0	168	11	6.5	159	14	8.8	179	5	2.8
Pembrokeshire LA	274	5	1.8	307	4	1.3	376	13	3.5	313	4	1.3
<b>Health Board Total</b>	<b>904</b>	<b>30</b>	<b>3.3</b>	<b>942</b>	<b>35</b>	<b>3.7</b>	<b>1086</b>	<b>44</b>	<b>4.1</b>	<b>976</b>	<b>51</b>	<b>5.2</b>
<b><u>Powys Teaching Health Board</u></b>	<b>278</b>	<b>6</b>	<b>2.2</b>	<b>265</b>	<b>9</b>	<b>3.4</b>	<b>281</b>	<b>1</b>	<b>0.4</b>	<b>351</b>	<b>5</b>	<b>1.4</b>
Unknown	5	0	0.0	3	1	33.3	8	0	0.0	36	1	2.8
<b>Wales Total</b>	<b>8135</b>	<b>485</b>	<b>6.0</b>	<b>8061</b>	<b>674</b>	<b>8.4</b>	<b>8969</b>	<b>610</b>	<b>6.8</b>	<b>8491</b>	<b>365</b>	<b>4.3</b>

Data reflects immunisations given and recorded on the NCCHD (following notifications to local Child Health Administration Offices), may be subject to under-reporting. BCG is not a routinely scheduled immunisation.

**Table 15.** Uptake of hepatitis B immunisation in children receiving their first dose within seven days of birth, reaching their 1st, 2nd, 5th and 16th birthdays during 01/01/17 and 31/03/17 and resident on 31/03/17, and percentage who are recorded as completing doses 1 to 4.

Area	1yr					2yrs					5yrs						
	Resident children	Babies at risk of perinatal infection	1 dose	2 doses	3 doses	Resident children	Babies at risk of perinatal infection	1 dose	2 doses	3 doses	4 doses	Resident children	Babies at risk of perinatal infection	1 dose	2 dose	3 doses	4 doses
	(n)	(n)	(%)	(%)	(%)	(n)	(n)	(%)	(%)	(%)	(%)	(n)	(n)	(%)	(%)	(%)	(%)
Abertawe Bro Morgannwg UHB	1390	2	100.0	100.0	100.0	1342	2	100.0	100.0	100.0	100.0	1533	2	100.0	100.0	100.0	100.0
Aneurin Bevan UHB	1569	1	100.0	100.0	100.0	1591	2	100.0	100.0	100.0	100.0	1738	0	-	-	-	-
Betsi Cadwaladr UHB	1683	2	100.0	100.0	100.0	1656	7	100.0	100.0	100.0	100.0	1925	2	100.0	100.0	100.0	100.0
Cardiff and Vale UHB	1405	6	100.0	100.0	100.0	1431	11	100.0	100.0	100.0	81.8	1544	2	100.0	100.0	100.0	100.0
Cwm Taf UHB	901	3	100.0	100.0	100.0	831	0	-	-	-	-	854	0	-	-	-	-
Hywel Dda UHB	904	0	-	-	-	942	0	-	-	-	-	1086	3	100.0	100.0	100.0	100.0
Powys Teaching HB	278	0	-	-	-	265	0	-	-	-	-	281	0	-	-	-	-
Unknown	5	0	-	-	-	3	0	-	-	-	-	8	0	-	-	-	-
<b>Wales Total</b>	<b>8135</b>	<b>14</b>	<b>100.0</b>	<b>100.0</b>	<b>100.0</b>	<b>8061</b>	<b>22</b>	<b>100.0</b>	<b>100.0</b>	<b>100.0</b>	<b>90.9</b>	<b>8969</b>	<b>9</b>	<b>100.0</b>	<b>100.0</b>	<b>100.0</b>	<b>100.0</b>

Data reflects immunisations given and recorded on the Public Health Wales All Wales Neonatal Hepatitis B database of babies born to hepatitis B positive mothers.