

# Vaccine Uptake in Children in Wales January to March 2012

COVER 102: Wales May 2012



## Key points

- Uptake of all scheduled immunisations in children less than one year of age exceeded the 95% uptake target this quarter. Nineteen Local Authority (LA) areas exceeded the 95% uptake target for the 5 in 1, with 18 achieving 95% uptake for all routine immunisations in one year olds.
- Uptake of the first dose of MMR vaccine in two year old children increased to 94% this quarter and ranged by LA from 91% to 97%. Six LA areas and one Health Board achieved the target of 95% uptake.
- Uptake of the second MMR dose by five years of age increased to 88% this quarter, ranging by LA from 85% to 94%.
- Uptake of 4 in 1 pre-school booster in five year old children was 90%, ranging by LA from 86% to 96%.
- Uptake of first dose of Human Papilloma Virus (HPV) vaccine in girls in the 2011-12 School Year 8 was 88% and uptake of the second dose was 84%.
- Coverage of one dose of MMR vaccine in 16 year olds this quarter was 92% and coverage of a completed two dose course was over 83%.

These results are for children living in Wales in May 2012 and reaching their first, second, fifth, 15<sup>th</sup> and 16<sup>th</sup> birthdays during the quarter 01/01/2012 to 31/03/2012. Uptake of HPV vaccination in girls in the 2011-12 School Year 8 (reaching their 13<sup>th</sup> birthday between 01/09/2011 and 31/08/2012) is presented, along with coverage in the previous year's School Year 8 group. HPV vaccination protects girls against cervical cancer associated with HPV types 16 and 18. The routine HPV vaccination schedule consists of three doses, usually given to girls in school Year 8 at intervals of one to two months and then six months after the first dose. BCG and hepatitis B immunisation uptake data are also presented here. BCG and hepatitis B immunisations are not part of the routine childhood schedule and are given selectively following risk assessment; further information on circumstances in which these immunisations should be given can be found in [Immunisations Against Infectious Disease \(The Green Book\)](#).

## Findings

1. Uptake of all three doses of the combined "5 in 1" DTaP/IPV/Hib<sup>1</sup> vaccine, scheduled at 2, 3 and 4 months of age, in children reaching their first birthday this quarter was 96.4% (compared to 96.2% last quarter). Uptake in the seven Health Boards ranged from 94.7% to 97.7% and by Local Authority (LA) from 93.5% (Conwy) to 99.4% (Merthyr Tydfil). Nineteen of the 22 LA areas achieved the target 95% uptake (see Figure 2 and Tables 1, 2).

<sup>1</sup> DTaP/IPV/Hib vaccine protects against Diphtheria, Tetanus, Pertussis (Whooping Cough), Polio and Hib infection.

<sup>2</sup> Men C vaccine protects against meningitis caused by meningococcus group C infection. PCV protects against pneumococcal meningitis, bacteraemia, pneumonia and otitis media. Children reaching one year of age this quarter have been scheduled for the two dose course of pneumococcal conjugate vaccination (PCV) at two and four months of age and the two dose MenC primary course scheduled at three and four months of age. Children reaching 2 years of age this quarter should have been offered a routine dose of the Hib/ MenC at 12 months and PCV at 13 months.

2. National uptake of a completed two dose course of MenC<sup>2</sup> vaccine in children reaching their first birthday this quarter was 96.3% (compared to 96.1% last quarter). Uptake in Health Boards ranged from 94.5% to 97.6% and ranged by LA from 93.2% (Conwy) to 99.4% (Merthyr Tydfil). Eighteen LA areas achieved an uptake in excess of the 95% target (see Tables 1, 2).
3. Uptake of a complete two dose primary course of pneumococcal conjugate vaccination (PCV2<sup>2</sup>) in children reaching their first birthday this quarter was 95.9%, an increase of 0.2% from last quarter, ranging by LA from 92.9% (Conwy) to 99.4% (Merthyr Tydfil). Eighteen LA areas achieved the target 95% uptake (see Table 2).
4. Uptake of the first dose of MMR<sup>3</sup> in children reaching their second birthday (scheduled at 13 months of age) increased to 94.1% this quarter (compared to 93.3% last quarter), ranging by LA from 91.4% (Pembrokeshire) to 97.0% (Wrexham) (see Figure 3 and Tables 1, 3). Six LA areas achieved the target of 95% uptake.
5. Uptake of the final dose of Pneumococcal Conjugate Vaccine (PCVf, scheduled at 13 months of age) by the second birthday increased to 95.2% (from 94.0% last quarter). Uptake by LA ranged from 93.4% (Denbighshire) to 97.0% (Blaenau Gwent) (see Tables 1, 3). Eleven LA areas achieved an uptake in excess of 95%.
6. Uptake of the Hib/MenC booster (given at 12 months of age) in children reaching two years of age during this quarter increased to 94.5% (from 94.1% last quarter), ranging by LA from 91.9% (Anglesey) to 97.7% (Port Talbot) (see Tables 1, 3). Eight LA areas achieved uptakes in excess of 95%.
7. In children reaching five years of age this quarter, uptake of one dose of MMR increased to 95.3% (from 95.2% last quarter) and uptake of two doses also increased to 88.4% (from 87.6% last quarter). Uptake of two doses ranged by Health Board from 85.6% to 91.3% and by LA from 85.0% (Merthyr Tydfil) to 94.5% (Flintshire) (see Figure 4, Table 4). No LA exceeded 95% uptake for two doses of MMR by five years of age, however ten LA areas exceeded 90%.
8. Uptake of the "4 in 1" DTaP/IPV<sup>4</sup> pre-school booster in children reaching their fifth birthday increased to 90.5% this quarter from 90.1% last quarter, ranging by Health Board from 87.3% to 93.3% and by LA from 86.2% (Carmarthenshire) to 96.3% (Flintshire) (Tables 1, 4). One LA area achieved the 95% uptake target; and 12 additional LA areas had uptakes in excess of 90% (see Figure 5, Table 4).
9. Coverage of a full two dose primary course of MenC in children reaching their fifth birthday this quarter was 94.7% (from 94.6% last quarter). Coverage ranged by Health Board from 92.7% to 96.9% and by LA from 90.4% to 98.4%. This group of children would have been scheduled according to the new schedule (two doses of MenC vaccine at three and four months, with a HibMenC booster at 12-13 months of age).
10. Uptake of one dose of HPV vaccine in girls in the 2011-12 School Year 8 (reaching their 13<sup>th</sup> birthday between 01/09/2011 and 31/08/2012) was 87.8% (Table 5), uptake of two doses was 84.3% and uptake of three doses was 51.4%. Vaccination sessions for the third dose and data entry are likely not to have been complete when data for this report were extracted, as a result uptake for the third dose is expected to increase. Coverage of HPV vaccination in the previous (2010-11) School Year 8 routine campaign group (girls turning 14 years of age during 01/09/11 to 31/08/12) was at 89.1%, 88.1% and 85.5% for one, two and three doses respectively (Table 5). This represents end of year figures for the 2010-11 routine HPV campaign, although coverage may increase as girls who have missed out on vaccination are given to opportunity to catch up.
11. Coverage of two doses of MMR in children reaching 16 years of age this quarter was 83.5% (Table 7), ranging by LA from 67.8% (Monmouthshire) to 91.0% (Denbighshire). Uptake of one dose of MMR was 91.8%, ranging by LA from 80.5% (Monmouthshire) to 96.9% (Anglesey and Flintshire). Uptake of a full course (two doses of MMR) of immunisation against rubella in 16 year old girls this quarter was 83.8% and uptake of only one dose was 91.9%.

12. National uptake of the Td/IPV<sup>5</sup> teenage booster in children reaching 16 years of age this quarter was 77.0% (Table 7), ranging by LA from 26.3% (Pembrokeshire) to 89.6% (Flintshire).
13. Coverage of a complete three dose course of HPV vaccine in girls reaching their 15<sup>th</sup> birthday during 01/09/11 to 31/08/12 (the 2011-12 year 10) is currently 83.3%. Coverage of a complete three dose course of HPV vaccine in girls reaching their 16<sup>th</sup> birthday during 01/09/11 to 31/08/12 (2011-12 year 11) is currently 87.3%. Coverage of a complete three dose course of HPV vaccine in girls reaching their 17<sup>th</sup> birthday during 01/09/11 to 31/08/12 (2011-12 year 12) is currently 79.4% (see Table 8).
14. Uptake of BCG<sup>6</sup> immunisation is presented in Table 9. These data are based on notifications of BCG immunisations recorded in the National Community Child Health Database (NCCHD). BCG immunisation has been received by 6.5%, 6.4%, 6.8% and 3.0% of children reaching their first, second, fifth and 16<sup>th</sup> birthdays (respectively) during quarter 1 2012. Highest proportions of children given BCG by one and two years of age this quarter were seen in Cardiff LA and Newport LA<sup>7</sup>.
15. Uptake of hepatitis B immunisation, recorded through the Child Health System is presented in Table 10. These data are based on reports of hep B immunisations recorded in the National Community Child Health database. Uptake data is only presented for children receiving the first dose of hepatitis B vaccine within seven days of birth. Fifty-five, 51 and 79 children reaching their 1<sup>st</sup>, 2<sup>nd</sup> and 5<sup>th</sup> birthdays during quarter 1 2012, respectively, had started hepatitis B immunisation courses in their first week of life. Of these children 65.5%, 70.6% and 82.3% (respectively) were recorded as having completed three doses of the hepatitis B schedule by those birthdays.

## Comment

Uptake of all routine immunisations scheduled for babies in their first year of life again exceeded 95% this quarter. Uptake of the HibMenC booster, the final dose of Pneumococcal Conjugate Vaccine and the first dose of MMR, all scheduled for babies in their second year continued on a positive trend toward 95%.

Although coverage is lower, trends for immunisation uptake in older children are positive. One local authority achieved 95% coverage for the 4 in 1 preschool booster against diphtheria, tetanus, polio and pertussis (whooping cough) and is close to achieving 95% coverage for two doses of MMR in children reaching five years of age. Coverage of immunisation in school aged children and teenagers remains generally suboptimal. In most LA areas in Wales between 10% and 15% of children aged five years are not fully immunised against measles, mumps and rubella, and a similar number have not received the 4 in 1 preschool booster.

During 2012 there has been an increase in measles cases in Wales, the majority of which have been associated with an outbreak in North Wales. As at May 29th 2012, 57 cases from North Wales have been confirmed since January, mainly children and teenagers. Coverage of two doses of MMR vaccination in North Wales is higher than in other areas of Wales, which highlights the potential for similar outbreaks elsewhere. It is important that MMR immunisation status checks are carried out on entry to primary and secondary school; and that children who have missed out on scheduled MMR immunisations are offered the chance to catch up, if future outbreaks are to be averted. Guidance on follow up of children who have missed out on MMR immunisation is given in [WHC\(2005\)081](#).

During 2011 and 2012 Wales has also experienced an increased incidence of whooping cough. During 2011, 67 cases were confirmed from Wales and a further 16 cases were confirmed during January to March 2012.

<sup>3</sup> MMR protects against measles, mumps and rubella infections.

<sup>4</sup> DTaP/IPV (and dTaP/IPV) vaccines boost protection against Diphtheria, Tetanus, Pertussis and Polio infection before school entry

<sup>5</sup> Td/IPV boosts protection against Diphtheria, Tetanus and Polio infection before entering adulthood

<sup>6</sup> BCG protects against tuberculosis infection.

<sup>7</sup> Numbers of eligible children for BCG and hep B are not known

## **Report prepared by Public Health Wales Vaccine Preventable Disease Programme and Communicable Disease Surveillance Centre.**

Data for this report was provided by NHS Wales Informatics Service from the National Community Child Health Database (NCCHD). The data was sourced from Community Child Health databases maintained by local Child Health Office staff in Trusts throughout Wales based on regular returns from doctors and nurses who immunise or advise on immunisation. Uptake data presented throughout are for LHB resident population, not for LHB GP practice populations. The maps, graphs and Table 1 are best viewed in colour.

### **Useful Links**

HPV catch-up for young women born between 1 September 1990 and 31 August 1991:

<http://wales.gov.uk/topics/health/publications/health/ministerial/hpvvaccination/?lang=en>

Welsh Health Circular (2005) 081 – MMR immunisation catch-up:

[http://www.wales.nhs.uk/documents/WHC\\_2005\\_081.pdf](http://www.wales.nhs.uk/documents/WHC_2005_081.pdf)

Accelerated HPV catch-up for young women born between 1 September 1991 and 31 August 1995 (intranet): <http://howis.wales.nhs.uk/sites3/page.cfm?orgid=474&pid=21255>

Public Health Wales Vaccination and Immunisation intranet site HPV pages:

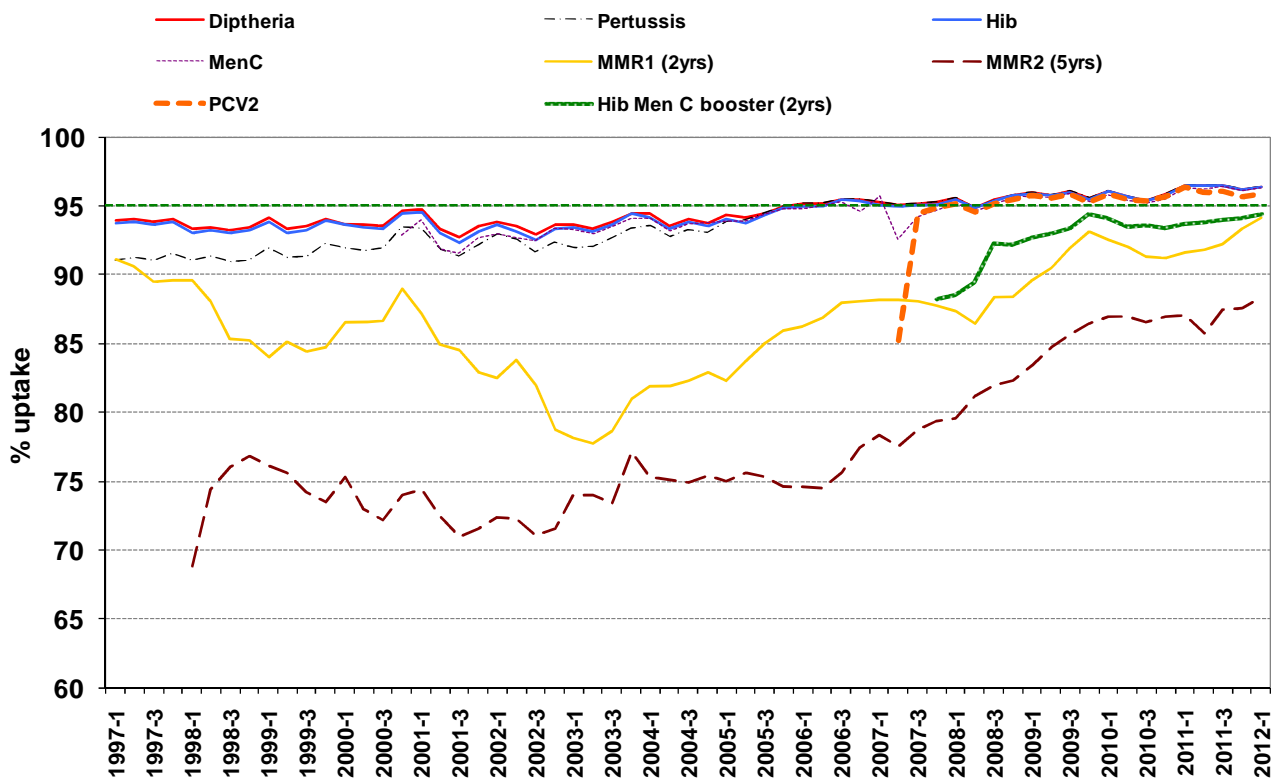
<http://howis.wales.nhs.uk/sites3/page.cfm?orgid=474&pid=21297>

### **Suggested citation for this report:**

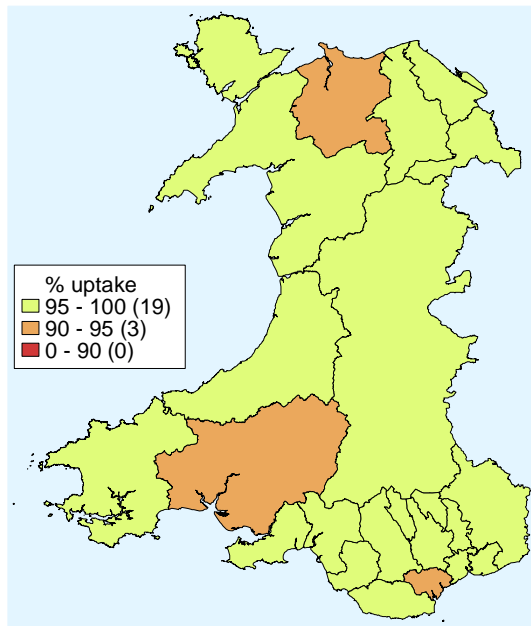
Public Health Wales Health Protection Division. Vaccine uptake in Children in Wales, January to March 2012: COVER report 102, March 2012. Cardiff, Public Health Wales.

If you have any questions or suggestions on COVER reporting in Wales, please contact: [surveillance.requests@wales.nhs.uk](mailto:surveillance.requests@wales.nhs.uk)

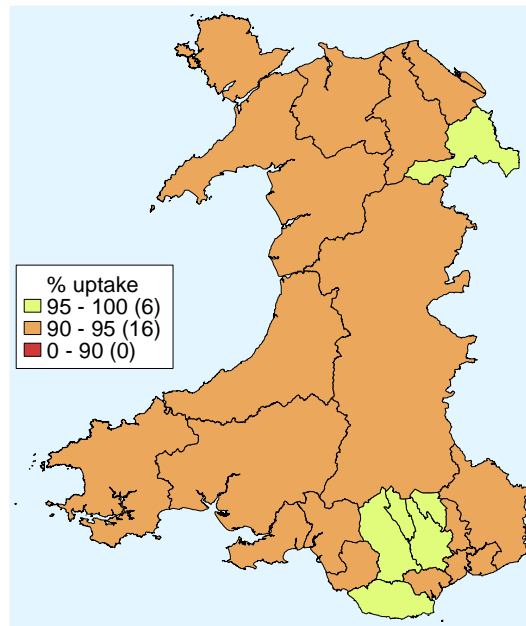
**Figure 1.** Percentage uptake of childhood immunisations in Wales, quarter 1 1997 to quarter 1 2012. Data are for children reaching 1 year of age each quarter for diphtheria, pertussis, Hib, MenC and pneumococcal conjugate vaccine (PCV2), children reaching 2 years of age for MMR1 (first dose) and the Hib Men C booster, and 5 years of age for MMR2 (second dose).



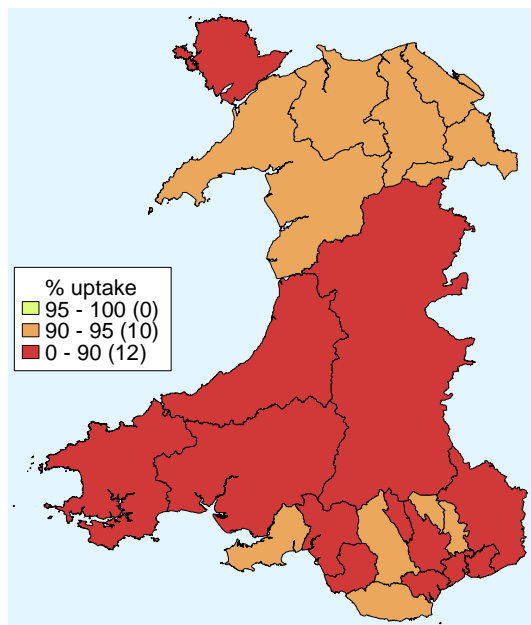
**Figure 2.** Uptake of 5 in 1 vaccine in Welsh Local Authority areas in children reaching their 1<sup>st</sup> birthday between 01/01/12 and 31/03/12.



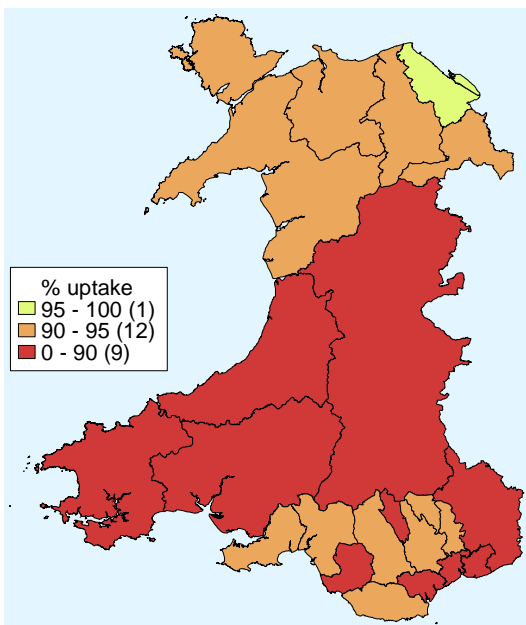
**Figure 3.** Uptake of at least 1 dose of MMR immunisation in Welsh Local Authority areas in children reaching their 2<sup>nd</sup> birthday between 01/01/12 and 31/03/12.



**Figure 4.** Uptake of two doses of MMR vaccine in Welsh Local Authority areas in children reaching their 5<sup>th</sup> birthday between 01/01/12 and 31/03/12.



**Figure 5.** Uptake of 4 in 1 vaccine in Welsh Local Authority areas in children reaching their 5<sup>th</sup> birthday between 01/01/12 and 31/03/12.



**Table1.** Summary table with uptake of selected immunisations in resident children reaching their 1st, 2nd, 5th and 16th birthday between 01/01/12 and 31/03/12 and resident on 01/05/12.

Area	Age 1 year				Age 2 years				Age 5 years				Age 16 years											
	Resident children (n)	5 in 1* (n) (%)		MenC (n) (%)		Resident children (n)	MMR1 (n) (%)		PCVf† (n) (%)		Hib/MenC booster (n) (%)		Resident children (n)	MMR2 (n) (%)		4 in 1* (n) (%)		Resident children (n)	MMR1 (n) (%)		MMR2 (n) (%)		3 in 1 Teenage booster** (n) (%)	
<b>Abertawe Bro Morgannwg University LHB</b>																								
Bridgend LA	386	374	96.9	374	96.9	433	404	93.3	408	94.2	411	94.9	372	321	86.3	327	87.9	373	343	92.0	331	88.7	315	84.5
Neath Port Talbot LA	415	400	96.4	400	96.4	388	368	94.8	376	96.9	379	97.7	356	310	87.1	322	90.4	393	367	93.4	338	86.0	324	82.4
Swansea LA	628	609	97.0	610	97.1	722	675	93.5	689	95.4	682	94.5	609	550	90.3	568	93.3	644	587	91.1	517	80.3	548	85.1
<b>Health Board Total</b>	<b>1429</b>	<b>1383</b>	<b>96.8</b>	<b>1384</b>	<b>96.9</b>	<b>1543</b>	<b>1447</b>	<b>93.8</b>	<b>1473</b>	<b>95.5</b>	<b>1472</b>	<b>95.4</b>	<b>1337</b>	<b>1181</b>	<b>88.3</b>	<b>1217</b>	<b>91.0</b>	<b>1410</b>	<b>1297</b>	<b>92.0</b>	<b>1186</b>	<b>84.1</b>	<b>1187</b>	<b>84.2</b>
<b>Aneurin Bevan LHB</b>																								
Blaenau Gwent LA	183	178	97.3	178	97.3	197	188	95.4	191	97.0	190	96.4	171	155	90.6	156	91.2	214	204	95.3	186	86.9	168	78.5
Caerphilly LA	495	484	97.8	484	97.8	537	512	95.3	516	96.1	511	95.2	470	412	87.7	426	90.6	517	466	90.1	410	79.3	396	76.6
Monmouthshire LA	187	181	96.8	181	96.8	214	199	93.0	201	93.9	197	92.1	210	183	87.1	185	88.1	267	215	80.5	181	67.8	195	73.0
Newport LA	459	442	96.3	440	95.9	448	416	92.9	425	94.9	419	93.5	437	372	85.1	384	87.9	467	414	88.7	363	77.7	347	74.3
Torfaen LA	266	261	98.1	260	97.7	248	234	94.4	240	96.8	234	94.4	246	222	90.2	224	91.1	274	249	90.9	228	83.2	213	77.7
<b>Health Board Total</b>	<b>1590</b>	<b>1546</b>	<b>97.2</b>	<b>1543</b>	<b>97.0</b>	<b>1644</b>	<b>1549</b>	<b>94.2</b>	<b>1573</b>	<b>95.7</b>	<b>1551</b>	<b>94.3</b>	<b>1534</b>	<b>1344</b>	<b>87.6</b>	<b>1375</b>	<b>89.6</b>	<b>1739</b>	<b>1548</b>	<b>89.0</b>	<b>1368</b>	<b>78.7</b>	<b>1319</b>	<b>75.8</b>
<b>Betsi Cadwaladr University LHB</b>																								
Anglesey LA	166	162	97.6	162	97.6	185	173	93.5	173	93.5	170	91.9	193	173	89.6	179	92.7	196	190	96.9	177	90.3	136	69.4
Conwy LA	294	275	93.5	274	93.2	303	282	93.1	284	93.7	280	92.4	241	217	90.0	222	92.1	283	268	94.7	257	90.8	239	84.5
Denbighshire LA	279	273	97.8	273	97.8	257	238	92.6	240	93.4	239	93.0	240	219	91.3	223	92.9	266	255	95.9	242	91.0	226	85.0
Flintshire LA	379	363	95.8	363	95.8	414	391	94.4	397	95.9	391	94.4	402	380	94.5	387	96.3	452	438	96.9	408	90.3	405	89.6
Gwynedd LA	282	275	97.5	274	97.2	310	294	94.8	293	94.5	293	94.5	290	261	90.0	263	90.7	309	296	95.8	280	90.6	249	80.6
Wrexham LA	424	415	97.9	414	97.6	396	384	97.0	384	97.0	381	96.2	387	351	90.7	362	93.5	355	334	94.1	316	89.0	289	81.4
<b>Health Board Total</b>	<b>1824</b>	<b>1763</b>	<b>96.7</b>	<b>1760</b>	<b>96.5</b>	<b>1865</b>	<b>1762</b>	<b>94.5</b>	<b>1771</b>	<b>95.0</b>	<b>1754</b>	<b>94.0</b>	<b>1753</b>	<b>1601</b>	<b>91.3</b>	<b>1636</b>	<b>93.3</b>	<b>1861</b>	<b>1781</b>	<b>95.7</b>	<b>1680</b>	<b>90.3</b>	<b>1544</b>	<b>83.0</b>
<b>Cardiff and Vale University LHB</b>																								
Cardiff LA	1143	1079	94.4	1077	94.2	1132	1057	93.4	1068	94.3	1049	92.7	991	853	86.1	869	87.7	960	888	92.5	807	84.1	685	71.4
Vale of Glamorgan LA	360	344	95.6	343	95.3	388	375	96.6	376	96.9	371	95.6	361	325	90.0	337	93.4	364	336	92.3	311	85.4	290	79.7
<b>Health Board Total</b>	<b>1503</b>	<b>1423</b>	<b>94.7</b>	<b>1420</b>	<b>94.5</b>	<b>1520</b>	<b>1432</b>	<b>94.2</b>	<b>1444</b>	<b>95.0</b>	<b>1420</b>	<b>93.4</b>	<b>1352</b>	<b>1178</b>	<b>87.1</b>	<b>1206</b>	<b>89.2</b>	<b>1324</b>	<b>1224</b>	<b>92.4</b>	<b>1118</b>	<b>84.4</b>	<b>975</b>	<b>73.6</b>
<b>Cwm Taf LHB</b>																								
Merthyr Tydfil LA	169	168	99.4	168	99.4	164	157	95.7	157	95.7	158	96.3	160	136	85.0	140	87.5	186	169	90.9	153	82.3	166	89.2
Rhondda Cynon Taff LA	764	744	97.4	743	97.3	740	715	96.6	717	96.9	715	96.6	613	562	91.7	571	93.1	627	593	94.6	546	87.1	534	85.2
<b>Health Board Total</b>	<b>933</b>	<b>912</b>	<b>97.7</b>	<b>911</b>	<b>97.6</b>	<b>904</b>	<b>872</b>	<b>96.5</b>	<b>874</b>	<b>96.7</b>	<b>873</b>	<b>96.6</b>	<b>773</b>	<b>698</b>	<b>90.3</b>	<b>711</b>	<b>92.0</b>	<b>813</b>	<b>762</b>	<b>93.7</b>	<b>699</b>	<b>86.0</b>	<b>700</b>	<b>86.1</b>
<b>Hywel Dda LHB</b>																								
Carmarthenshire LA	491	465	94.7	466	94.9	471	440	93.4	443	94.1	443	94.1	485	413	85.2	418	86.2	526	477	90.7	431	81.9	379	72.1
Ceredigion LA	154	150	97.4	150	97.4	172	161	93.6	166	96.5	167	97.1	187	160	85.6	167	89.3	162	148	91.4	131	80.9	127	78.4
Pembrokeshire LA	336	325	96.7	325	96.7	314	287	91.4	295	93.9	294	93.6	300	259	86.3	264	88.0	354	320	90.4	283	79.9	93	26.3
<b>Health Board Total</b>	<b>981</b>	<b>940</b>	<b>95.8</b>	<b>941</b>	<b>95.9</b>	<b>957</b>	<b>888</b>	<b>92.8</b>	<b>904</b>	<b>94.5</b>	<b>904</b>	<b>94.5</b>	<b>972</b>	<b>832</b>	<b>85.6</b>	<b>849</b>	<b>87.3</b>	<b>1042</b>	<b>945</b>	<b>90.7</b>	<b>845</b>	<b>81.1</b>	<b>599</b>	<b>57.5</b>
<b>Powys Teaching LHB</b>	<b>271</b>	<b>261</b>	<b>96.3</b>	<b>257</b>	<b>94.8</b>	<b>280</b>	<b>257</b>	<b>91.8</b>	<b>262</b>	<b>93.6</b>	<b>262</b>	<b>93.6</b>	<b>299</b>	<b>258</b>	<b>86.3</b>	<b>268</b>	<b>89.6</b>	<b>355</b>	<b>304</b>	<b>85.6</b>	<b>258</b>	<b>72.7</b>	<b>279</b>	<b>78.6</b>
Unknown	36	33	91.7	33	91.7	36	27	75.0	29	80.6	29	80.6	43	35	81.4	36	83.7	74	50	67.6	44	59.5	35	47.3
<b>Wales Total</b>	<b>8567</b>	<b>8261</b>	<b>96.4</b>	<b>8249</b>	<b>96.3</b>	<b>8749</b>	<b>8234</b>	<b>94.1</b>	<b>8330</b>	<b>95.2</b>	<b>8265</b>	<b>94.5</b>	<b>8063</b>	<b>7127</b>	<b>88.4</b>	<b>7298</b>	<b>90.5</b>	<b>8618</b>	<b>7911</b>	<b>91.8</b>	<b>7198</b>	<b>83.5</b>	<b>6638</b>	<b>77.0</b>

\* Uptake of pertussis used as proxy

\*\* Uptake of diphtheria (reinforcing booster dose) used as proxy

‡ Children receiving the final dose of PCV

	95% and higher
	90% to 95%
	below 90%

**Table 2.** Vaccine uptake in children reaching their 1st birthday between 01/01/12 and 31/03/12 and resident on 01/05/12.

Area	Resident children	D3	T3	P3	Po3	Hib3	MMR1	MenC	PCV2*	HibMenCb	
	(n)	(n) (%)	(n) (%)	(n) (%)	(n) (%)	(n) (%)	(n) (%)	(n) (%)	(n) (%)	(n) (%)	
<b><u>Abertawe Bro Morgannwg University HB</u></b>											
Bridgend LA	386	374 96.9	374 96.9	374 96.9	374 96.9	373 96.6	373 96.6	1 0.3	374 96.9	373 96.6	1 0.3
Neath Port Talbot LA	415	400 96.4	400 96.4	400 96.4	400 96.4	400 96.4	400 96.4	0 0.0	400 96.4	399 96.1	0 0.0
Swansea LA	628	609 97.0	609 97.0	609 97.0	609 97.0	610 97.1	609 97.0	7 1.1	610 97.1	609 97.0	5 0.8
<b>Health Board Total</b>	<b>1429</b>	<b>1383 96.8</b>	<b>1383 96.8</b>	<b>1383 96.8</b>	<b>1383 96.8</b>	<b>1383 96.8</b>	<b>1382 96.7</b>	<b>8 0.6</b>	<b>1384 96.9</b>	<b>1381 96.6</b>	<b>6 0.4</b>
<b><u>Aneurin Bevan HB</u></b>											
Blaenau Gwent LA	183	178 97.3	178 97.3	178 97.3	178 97.3	178 97.3	178 97.3	1 0.5	178 97.3	179 97.8	0 0.0
Caerphilly LA	495	484 97.8	484 97.8	484 97.8	484 97.8	484 97.8	484 97.8	5 1.0	484 97.8	482 97.4	2 0.4
Monmouthshire LA	187	181 96.8	181 96.8	181 96.8	181 96.8	181 96.8	181 96.8	0 0.0	181 96.8	182 97.3	0 0.0
Newport LA	459	442 96.3	442 96.3	442 96.3	442 96.3	442 96.3	441 96.1	1 0.2	440 95.9	440 95.9	4 0.9
Torfaen LA	266	261 98.1	261 98.1	261 98.1	261 98.1	261 98.1	261 98.1	0 0.0	260 97.7	259 97.4	0 0.0
<b>Health Board Total</b>	<b>1590</b>	<b>1546 97.2</b>	<b>1546 97.2</b>	<b>1546 97.2</b>	<b>1546 97.2</b>	<b>1546 97.2</b>	<b>1545 97.2</b>	<b>7 0.4</b>	<b>1543 97.0</b>	<b>1542 97.0</b>	<b>6 0.4</b>
<b><u>Betsi Cadwaladr University HB</u></b>											
Anglesey LA	166	162 97.6	162 97.6	162 97.6	162 97.6	162 97.6	162 97.6	2 1.2	162 97.6	161 97.0	2 1.2
Conwy LA	294	275 93.5	275 93.5	275 93.5	275 93.5	275 93.5	275 93.5	0 0.0	274 93.2	273 92.9	1 0.3
Denbighshire LA	279	273 97.8	273 97.8	273 97.8	273 97.8	273 97.8	272 97.5	4 1.4	273 97.8	273 97.8	3 1.1
Flintshire LA	379	363 95.8	363 95.8	363 95.8	363 95.8	363 95.8	363 95.8	3 0.8	363 95.8	361 95.3	1 0.3
Gwynedd LA	282	275 97.5	275 97.5	275 97.5	275 97.5	275 97.5	275 97.5	2 0.7	274 97.2	274 97.2	0 0.0
Wrexham LA	424	415 97.9	415 97.9	415 97.9	415 97.9	415 97.9	415 97.9	2 0.5	414 97.6	413 97.4	2 0.5
<b>Health Board Total</b>	<b>1824</b>	<b>1763 96.7</b>	<b>1763 96.7</b>	<b>1763 96.7</b>	<b>1763 96.7</b>	<b>1763 96.7</b>	<b>1762 96.6</b>	<b>13 0.7</b>	<b>1760 96.5</b>	<b>1755 96.2</b>	<b>9 0.5</b>
<b><u>Cardiff and Vale University HB</u></b>											
Cardiff LA	1143	1079 94.4	1079 94.4	1079 94.4	1079 94.4	1080 94.5	1079 94.4	8 0.7	1077 94.2	1065 93.2	6 0.5
Vale of Glamorgan LA	360	344 95.6	344 95.6	344 95.6	344 95.6	344 95.6	344 95.6	0 0.0	343 95.3	344 95.6	0 0.0
<b>Health Board Total</b>	<b>1503</b>	<b>1423 94.7</b>	<b>1423 94.7</b>	<b>1423 94.7</b>	<b>1423 94.7</b>	<b>1424 94.7</b>	<b>1423 94.7</b>	<b>8 0.5</b>	<b>1420 94.5</b>	<b>1409 93.7</b>	<b>6 0.4</b>
<b><u>Cwm Taf HB</u></b>											
Merthyr Tydfil LA	169	168 99.4	168 99.4	168 99.4	168 99.4	168 99.4	168 99.4	4 2.4	168 99.4	168 99.4	4 2.4
Rhondda Cynon Taff LA	764	744 97.4	744 97.4	744 97.4	744 97.4	744 97.4	743 97.3	4 0.5	743 97.3	739 96.7	4 0.5
<b>Health Board Total</b>	<b>933</b>	<b>912 97.7</b>	<b>912 97.7</b>	<b>912 97.7</b>	<b>912 97.7</b>	<b>912 97.7</b>	<b>911 97.6</b>	<b>8 0.9</b>	<b>911 97.6</b>	<b>907 97.2</b>	<b>8 0.9</b>
<b><u>Hywel Dda HB</u></b>											
Carmarthenshire LA	491	465 94.7	465 94.7	465 94.7	465 94.7	464 94.5	464 94.5	0 0.0	466 94.9	461 93.9	0 0.0
Ceredigion LA	154	150 97.4	150 97.4	150 97.4	150 97.4	150 97.4	150 97.4	0 0.0	150 97.4	148 96.1	0 0.0
Pembrokeshire LA	336	325 96.7	325 96.7	325 96.7	325 96.7	325 96.7	325 96.7	2 0.6	325 96.7	324 96.4	2 0.6
<b>Health Board Total</b>	<b>981</b>	<b>940 95.8</b>	<b>940 95.8</b>	<b>940 95.8</b>	<b>940 95.8</b>	<b>939 95.7</b>	<b>939 95.7</b>	<b>2 0.2</b>	<b>941 95.9</b>	<b>933 95.1</b>	<b>2 0.2</b>
<b><u>Powys Teaching HB</u></b>											
Unknown	271	261 96.3	261 96.3	261 96.3	261 96.3	261 96.3	261 96.3	11 4.1	257 94.8	257 94.8	15 5.5
Unknown	36	33 91.7	33 91.7	33 91.7	33 91.7	33 91.7	33 91.7	0 0.0	33 91.7	34 94.4	0 0.0
<b>Wales Total</b>	<b>8567</b>	<b>8261 96.4</b>	<b>8261 96.4</b>	<b>8261 96.4</b>	<b>8261 96.4</b>	<b>8261 96.4</b>	<b>8256 96.4</b>	<b>57 0.7</b>	<b>8249 96.3</b>	<b>8218 95.9</b>	<b>52 0.6</b>

\* Full primary 2 dose course of pneumococcal conjugate vaccine

**Table 3.** Vaccine uptake in children reaching their 2nd birthday between 01/01/12 and 31/03/12 and resident on 01/05/12.

Area	Resident children	D3	T3	P3	Po3	Hib3	MMR1	MenC*	PCV2**	PCVf***	HibMenCb
	(n)	(n) (%)	(n) (%)	(n) (%)	(n) (%)	(n) (%)	(n) (%)	(n) (%)	(n) (%)	(n) (%)	(n) (%)
<b><u>Abertawe Bro Morgannwg University HB</u></b>											
Bridgend LA	433	425 98.2	425 98.2	425 98.2	425 98.2	425 98.2	404 93.3	419 96.8	418 96.5	408 94.2	411 94.9
Neath Port Talbot LA	388	387 99.7	387 99.7	387 99.7	386 99.5	387 99.7	368 94.8	386 99.5	382 98.5	376 96.9	379 97.7
Swansea LA	722	708 98.1	708 98.1	708 98.1	708 98.1	708 98.1	675 93.5	699 96.8	686 95.0	689 95.4	682 94.5
<b>Health Board Total</b>	<b>1543</b>	<b>1520 98.5</b>	<b>1520 98.5</b>	<b>1520 98.5</b>	<b>1519 98.4</b>	<b>1520 98.5</b>	<b>1447 93.8</b>	<b>1504 97.5</b>	<b>1486 96.3</b>	<b>1473 95.5</b>	<b>1472 95.4</b>
<b><u>Aneurin Bevan HB</u></b>											
Blaenau Gwent LA	197	195 99.0	195 99.0	195 99.0	195 99.0	195 99.0	188 95.4	195 99.0	193 98.0	191 97.0	190 96.4
Caerphilly LA	537	527 98.1	527 98.1	527 98.1	527 98.1	527 98.1	512 95.3	525 97.8	521 97.0	516 96.1	511 95.2
Monmouthshire LA	214	204 95.3	204 95.3	204 95.3	204 95.3	204 95.3	199 93.0	200 93.5	201 93.9	201 93.9	197 92.1
Newport LA	448	436 97.3	436 97.3	436 97.3	435 97.1	435 97.1	416 92.9	431 96.2	429 95.8	425 94.9	419 93.5
Torfaen LA	248	243 98.0	243 98.0	243 98.0	243 98.0	243 98.0	234 94.4	241 97.2	235 94.8	240 96.8	234 94.4
<b>Health Board Total</b>	<b>1644</b>	<b>1605 97.6</b>	<b>1605 97.6</b>	<b>1605 97.6</b>	<b>1604 97.6</b>	<b>1604 97.6</b>	<b>1549 94.2</b>	<b>1592 96.8</b>	<b>1579 96.0</b>	<b>1573 95.7</b>	<b>1551 94.3</b>
<b><u>Betsi Cadwaladr University HB</u></b>											
Anglesey LA	185	180 97.3	180 97.3	180 97.3	180 97.3	180 97.3	173 93.5	178 96.2	175 94.6	173 93.5	170 91.9
Conwy LA	303	295 97.4	295 97.4	295 97.4	295 97.4	295 97.4	282 93.1	290 95.7	280 92.4	284 93.7	280 92.4
Denbighshire LA	257	247 96.1	247 96.1	247 96.1	247 96.1	247 96.1	238 92.6	246 95.7	241 93.8	240 93.4	239 93.0
Flintshire LA	414	406 98.1	406 98.1	406 98.1	406 98.1	406 98.1	391 94.4	404 97.6	397 95.9	397 95.9	391 94.4
Gwynedd LA	310	301 97.1	301 97.1	301 97.1	301 97.1	301 97.1	294 94.8	295 95.2	295 95.2	293 94.5	293 94.5
Wrexham LA	396	390 98.5	390 98.5	390 98.5	389 98.2	390 98.5	384 97.0	384 97.0	383 96.7	384 97.0	381 96.2
<b>Health Board Total</b>	<b>1865</b>	<b>1819 97.5</b>	<b>1819 97.5</b>	<b>1819 97.5</b>	<b>1818 97.5</b>	<b>1819 97.5</b>	<b>1762 94.5</b>	<b>1797 96.4</b>	<b>1771 95.0</b>	<b>1771 95.0</b>	<b>1754 94.0</b>
<b><u>Cardiff and Vale University HB</u></b>											
Cardiff LA	1132	1105 97.6	1105 97.6	1105 97.6	1104 97.5	1102 97.3	1057 93.4	1075 95.0	1061 93.7	1068 94.3	1049 92.7
Vale of Glamorgan LA	388	382 98.5	382 98.5	382 98.5	382 98.5	382 98.5	375 96.6	379 97.7	368 94.8	376 96.9	371 95.6
<b>Health Board Total</b>	<b>1520</b>	<b>1487 97.8</b>	<b>1487 97.8</b>	<b>1487 97.8</b>	<b>1486 97.8</b>	<b>1484 97.6</b>	<b>1432 94.2</b>	<b>1454 95.7</b>	<b>1429 94.0</b>	<b>1444 95.0</b>	<b>1420 93.4</b>
<b><u>Cwm Taf HB</u></b>											
Merthyr Tydfil LA	164	162 98.8	162 98.8	162 98.8	162 98.8	162 98.8	157 95.7	163 99.4	161 98.2	157 95.7	158 96.3
Rhondda Cynon Taff LA	740	731 98.8	731 98.8	731 98.8	731 98.8	731 98.8	715 96.6	729 98.5	724 97.8	717 96.9	715 96.6
<b>Health Board Total</b>	<b>904</b>	<b>893 98.8</b>	<b>893 98.8</b>	<b>893 98.8</b>	<b>893 98.8</b>	<b>893 98.8</b>	<b>872 96.5</b>	<b>892 98.7</b>	<b>885 97.9</b>	<b>874 96.7</b>	<b>873 96.6</b>
<b><u>Hywel Dda HB</u></b>											
Cardiff LA	471	454 96.4	454 96.4	454 96.4	454 96.4	454 96.4	440 93.4	452 96.0	445 94.5	443 94.1	443 94.1
Ceredigion LA	172	168 97.7	168 97.7	168 97.7	168 97.7	168 97.7	161 93.6	168 97.7	167 97.1	166 96.5	167 97.1
Pembrokeshire LA	314	306 97.5	306 97.5	306 97.5	306 97.5	306 97.5	287 91.4	302 96.2	301 95.9	295 93.9	294 93.6
<b>Health Board Total</b>	<b>957</b>	<b>928 97.0</b>	<b>928 97.0</b>	<b>928 97.0</b>	<b>928 97.0</b>	<b>928 97.0</b>	<b>888 92.8</b>	<b>922 96.3</b>	<b>913 95.4</b>	<b>904 94.5</b>	<b>904 94.5</b>
<b><u>Powys Teaching HB</u></b>	<b>280</b>	<b>268 95.7</b>	<b>268 95.7</b>	<b>268 95.7</b>	<b>268 95.7</b>	<b>267 95.4</b>	<b>257 91.8</b>	<b>263 93.9</b>	<b>263 93.9</b>	<b>262 93.6</b>	<b>262 93.6</b>
Unknown	36	32 88.9	32 88.9	32 88.9	32 88.9	32 88.9	27 75.0	31 86.1	31 86.1	29 80.6	29 80.6
<b>Wales Total</b>	<b>8749</b>	<b>8552 97.7</b>	<b>8552 97.7</b>	<b>8552 97.7</b>	<b>8548 97.7</b>	<b>8547 97.7</b>	<b>8234 94.1</b>	<b>8455 96.6</b>	<b>8357 95.5</b>	<b>8330 95.2</b>	<b>8265 94.5</b>

\* Reflects uptake of the completed primary course in this age group

\*\* Full primary 2 dose course of pneumococcal conjugate vaccine

\*\*\* Final (booster) dose of pneumococcal conjugate vaccine

**Table 4.** Vaccine uptake in children reaching their 5th birthday between 01/01/12 and 31/03/12 and resident on 01/05/12.

Area	Resident children	D3	T3	P3	Po3	Hib3	MenC*	PCVf**	HibMenCb	MMR1	MMR2	D4	T4	aP	Po4
	(n)	(n) (%)	(n) (%)	(n) (%)	(n) (%)	(n) (%)	(n) (%)	(n) (%)	(n) (%)	(n) (%)	(n) (%)	(n) (%)	(n) (%)	(n) (%)	(n) (%)
<b>Abertawe Bro Morgannwg University HB</b>															
Bridgend LA	372	368 98.9	368 98.9	368 98.9	368 98.9	367 98.7	358 96.2	343 92.2	352 94.6	356 95.7	321 86.3	327 87.9	327 87.9	327 87.9	327 87.9
Neath Port Talbot LA	356	349 98.0	349 98.0	349 98.0	349 98.0	347 97.5	341 95.8	313 87.9	335 94.1	335 94.1	310 87.1	322 90.4	322 90.4	322 90.4	322 90.4
Swansea LA	609	600 98.5	600 98.5	600 98.5	599 98.4	594 97.5	568 93.3	535 87.8	575 94.4	589 96.7	550 90.3	568 93.3	568 93.3	568 93.3	567 93.1
<b>Health Board Total</b>	<b>1337</b>	<b>1317 98.5</b>	<b>1317 98.5</b>	<b>1317 98.5</b>	<b>1316 98.4</b>	<b>1308 97.8</b>	<b>1267 94.8</b>	<b>1191 89.1</b>	<b>1262 94.4</b>	<b>1280 95.7</b>	<b>1181 88.3</b>	<b>1217 91.0</b>	<b>1217 91.0</b>	<b>1217 91.0</b>	<b>1216 90.9</b>
<b>Aneurin Bevan HB</b>															
Blaenau Gwent LA	171	168 98.2	168 98.2	168 98.2	168 98.2	168 98.2	167 97.7	154 90.1	163 95.3	166 97.1	155 90.6	156 91.2	156 91.2	156 91.2	156 91.2
Caerphilly LA	470	463 98.5	463 98.5	463 98.5	463 98.5	463 98.5	450 95.7	427 90.9	443 94.3	452 96.2	412 87.7	426 90.6	426 90.6	426 90.6	426 90.6
Monmouthshire LA	210	202 96.2	202 96.2	202 96.2	202 96.2	202 96.2	200 95.2	188 89.5	194 92.4	196 93.3	183 87.1	185 88.1	185 88.1	185 88.1	185 88.1
Newport LA	437	420 96.1	420 96.1	420 96.1	418 95.7	419 95.9	406 92.9	387 88.6	391 89.5	413 94.5	372 85.1	385 88.1	385 88.1	384 87.9	385 88.1
Torfaen LA	246	243 98.8	243 98.8	243 98.8	244 99.2	243 98.8	240 97.6	230 93.5	234 95.1	242 98.4	222 90.2	224 91.1	224 91.1	224 91.1	224 91.1
<b>Health Board Total</b>	<b>1534</b>	<b>1496 97.5</b>	<b>1496 97.5</b>	<b>1496 97.5</b>	<b>1495 97.5</b>	<b>1495 97.5</b>	<b>1463 95.4</b>	<b>1386 90.4</b>	<b>1425 92.9</b>	<b>1469 95.8</b>	<b>1344 87.6</b>	<b>1376 89.7</b>	<b>1376 89.7</b>	<b>1375 89.6</b>	<b>1376 89.7</b>
<b>Betsi Cadwaladr University HB</b>															
Anglesey LA	193	192 99.5	192 99.5	192 99.5	192 99.5	192 99.5	190 98.4	178 92.2	186 96.4	186 96.4	173 89.6	179 92.7	179 92.7	179 92.7	179 92.7
Conwy LA	241	235 97.5	235 97.5	235 97.5	235 97.5	235 97.5	229 95.0	216 89.6	224 92.9	228 94.6	217 90.0	222 92.1	222 92.1	222 92.1	222 92.1
Denbighshire LA	240	233 97.1	233 97.1	233 97.1	232 96.7	233 97.1	224 93.3	219 91.3	225 93.8	234 97.5	219 91.3	223 92.9	223 92.9	223 92.9	223 92.9
Flintshire LA	402	393 97.8	393 97.8	393 97.8	393 97.8	393 97.8	391 97.3	374 93.0	387 96.3	389 96.8	380 94.5	387 96.3	387 96.3	387 96.3	387 96.3
Gwynedd LA	290	279 96.2	279 96.2	279 96.2	279 96.2	279 96.2	271 93.4	264 91.0	274 94.5	277 95.5	261 90.0	263 90.7	263 90.7	263 90.7	263 90.7
Wrexham LA	387	378 97.7	378 97.7	378 97.7	377 97.4	377 97.4	371 95.9	363 93.8	371 95.9	370 95.6	351 90.7	362 93.5	362 93.5	362 93.5	362 93.5
<b>Health Board Total</b>	<b>1753</b>	<b>1710 97.5</b>	<b>1710 97.5</b>	<b>1710 97.5</b>	<b>1708 97.4</b>	<b>1709 97.5</b>	<b>1676 95.6</b>	<b>1614 92.1</b>	<b>1667 95.1</b>	<b>1684 96.1</b>	<b>1601 91.3</b>	<b>1636 93.3</b>	<b>1636 93.3</b>	<b>1636 93.3</b>	<b>1636 93.3</b>
<b>Cardiff and Vale University HB</b>															
Cardiff LA	991	951 96.0	951 96.0	951 96.0	949 95.8	945 95.4	903 91.1	865 87.3	899 90.7	930 93.8	853 86.1	869 87.7	869 87.7	869 87.7	869 87.7
Vale of Glamorgan LA	361	355 98.3	355 98.3	355 98.3	354 98.1	353 97.8	350 97.0	334 92.5	342 94.7	349 96.7	325 90.0	337 93.4	337 93.4	337 93.4	338 93.6
<b>Health Board Total</b>	<b>1352</b>	<b>1306 96.6</b>	<b>1306 96.6</b>	<b>1306 96.6</b>	<b>1303 96.4</b>	<b>1298 96.0</b>	<b>1253 92.7</b>	<b>1199 88.7</b>	<b>1241 91.8</b>	<b>1279 94.6</b>	<b>1178 87.1</b>	<b>1206 89.2</b>	<b>1206 89.2</b>	<b>1206 89.2</b>	<b>1207 89.3</b>
<b>Cwm Taf HB</b>															
Merthyr Tydfil LA	160	149 93.1	149 93.1	149 93.1	149 93.1	148 92.5	146 91.3	139 86.9	148 92.5	150 93.8	136 85.0	140 87.5	140 87.5	140 87.5	140 87.5
Rhondda Cynon Taff LA	613	605 98.7	605 98.7	605 98.7	604 98.5	604 98.5	603 98.4	580 94.6	590 96.2	599 97.7	562 91.7	571 93.1	571 93.1	571 93.1	571 93.1
<b>Health Board Total</b>	<b>773</b>	<b>754 97.5</b>	<b>754 97.5</b>	<b>754 97.5</b>	<b>753 97.4</b>	<b>752 97.3</b>	<b>749 96.9</b>	<b>719 93.0</b>	<b>738 95.5</b>	<b>749 96.9</b>	<b>698 90.3</b>	<b>711 92.0</b>	<b>711 92.0</b>	<b>711 92.0</b>	<b>711 92.0</b>
<b>Hywel Dda HB</b>															
Carmarthenshire LA	485	468 96.5	468 96.5	468 96.5	463 95.5	462 95.3	453 93.4	412 84.9	444 91.5	453 93.4	413 85.2	419 86.4	419 86.4	418 86.2	419 86.4
Ceredigion LA	187	174 93.0	174 93.0	174 93.0	174 93.0	174 93.0	169 90.4	164 87.7	171 91.4	170 90.9	160 85.6	167 89.3	167 89.3	167 89.3	167 89.3
Pembrokeshire LA	300	290 96.7	290 96.7	290 96.7	291 97.0	291 97.0	284 94.7	272 90.7	279 93.0	281 93.7	259 86.3	264 88.0	264 88.0	264 88.0	263 87.7
<b>Health Board Total</b>	<b>972</b>	<b>932 95.9</b>	<b>932 95.9</b>	<b>932 95.9</b>	<b>928 95.5</b>	<b>927 95.4</b>	<b>906 93.2</b>	<b>848 87.2</b>	<b>894 92.0</b>	<b>904 93.0</b>	<b>832 85.6</b>	<b>850 87.4</b>	<b>850 87.4</b>	<b>849 87.3</b>	<b>849 87.3</b>
<b>Powys Teaching HB</b>	<b>299</b>	<b>290 97.0</b>	<b>290 97.0</b>	<b>290 97.0</b>	<b>290 97.0</b>	<b>289 96.7</b>	<b>285 95.3</b>	<b>280 93.6</b>	<b>279 93.3</b>	<b>279 93.3</b>	<b>258 86.3</b>	<b>268 89.6</b>	<b>268 89.6</b>	<b>268 89.6</b>	<b>268 89.6</b>
Unknown	43	38 88.4	38 88.4	38 88.4	38 88.4	38 88.4	37 86.0	37 86.0	37 86.0	38 88.4	35 81.4	36 83.7	36 83.7	36 83.7	36 83.7
<b>Wales Total</b>	<b>8063</b>	<b>7843 97.3</b>	<b>7843 97.3</b>	<b>7843 97.3</b>	<b>7831 97.1</b>	<b>7816 96.9</b>	<b>7636 94.7</b>	<b>7274 90.2</b>	<b>7543 93.6</b>	<b>7682 95.3</b>	<b>7127 88.4</b>	<b>7300 90.5</b>	<b>7300 90.5</b>	<b>7298 90.5</b>	<b>7299 90.5</b>

\* Complete three dose course, or two doses with the second delivered after 115 days of age

\*\* Final (booster) dose of pneumococcal conjugate vaccine

**Table 5.** Uptake of HPV vaccine in girls reaching 13 and 14 years of age between 01/09/11 and 31/08/12 and resident in Wales on 01/05/12.

Area	13 years (School Year 8)*							14 years (School Year 9)						
	Resident girls (n)	HPV 1 dose (n) (%)	HPV 2 doses (n) (%)	HPV 3 doses (n) (%)	Resident girls (n)	HPV 1 dose (n) (%)	HPV 2 doses (n) (%)	HPV 3 doses (n) (%)						
<b><u>Abertawe Bro Morgannwg University HB</u></b>														
Bridgend LA	770	690 89.6	668 86.8	576 74.8	789	731 92.6	726 92.0	710 90.0						
Neath Port Talbot LA	728	640 87.9	599 82.3	344 47.3	779	734 94.2	726 93.2	711 91.3						
Swansea LA	1199	1057 88.2	1003 83.7	653 54.5	1247	1137 91.2	1121 89.9	1097 88.0						
<b>Health Board Total</b>	<b>2697</b>	<b>2387 88.5</b>	<b>2270 84.2</b>	<b>1573 58.3</b>	<b>2815</b>	<b>2602 92.4</b>	<b>2573 91.4</b>	<b>2518 89.4</b>						
<b><u>Aneurin Bevan HB</u></b>														
Blaenau Gwent LA	383	361 94.3	347 90.6	254 66.3	399	365 91.5	360 90.2	355 89.0						
Caerphilly LA	1001	910 90.9	855 85.4	442 44.2	1043	940 90.1	927 88.9	904 86.7						
Monmouthshire LA	514	401 78.0	390 75.9	299 58.2	497	387 77.9	382 76.9	373 75.1						
Newport LA	929	793 85.4	753 81.1	558 60.1	984	842 85.6	834 84.8	821 83.4						
Torfaen LA	536	483 90.1	450 84.0	299 55.8	570	514 90.2	514 90.2	501 87.9						
<b>Health Board Total</b>	<b>3363</b>	<b>2948 87.7</b>	<b>2795 83.1</b>	<b>1852 55.1</b>	<b>3493</b>	<b>3048 87.3</b>	<b>3017 86.4</b>	<b>2954 84.6</b>						
<b><u>Betsi Cadwaladr University HB</u></b>														
Anglesey LA	363	320 88.2	311 85.7	244 67.2	377	345 91.5	341 90.5	335 88.9						
Conwy LA	591	501 84.8	492 83.2	155 26.2	609	546 89.7	546 89.7	516 84.7						
Denbighshire LA	529	450 85.1	447 84.5	303 57.3	533	472 88.6	469 88.0	449 84.2						
Flintshire LA	805	731 90.8	718 89.2	534 66.3	842	758 90.0	754 89.5	729 86.6						
Gwynedd LA	651	568 87.3	560 86.0	320 49.2	616	536 87.0	534 86.7	527 85.6						
Wrexham LA	673	598 88.9	589 87.5	492 73.1	717	648 90.4	643 89.7	635 88.6						
<b>Health Board Total</b>	<b>3612</b>	<b>3168 87.7</b>	<b>3117 86.3</b>	<b>2048 56.7</b>	<b>3694</b>	<b>3305 89.5</b>	<b>3287 89.0</b>	<b>3191 86.4</b>						
<b><u>Cardiff and Vale University HB</u></b>														
Cardiff LA	1805	1560 86.4	1423 78.8	658 36.5	1838	1622 88.2	1596 86.8	1499 81.6						
Vale of Glamorgan LA	707	651 92.1	608 86.0	231 32.7	744	667 89.7	653 87.8	607 81.6						
<b>Health Board Total</b>	<b>2512</b>	<b>2211 88.0</b>	<b>2031 80.9</b>	<b>889 35.4</b>	<b>2582</b>	<b>2289 88.7</b>	<b>2249 87.1</b>	<b>2106 81.6</b>						
<b><u>Cwm Taf HB</u></b>														
Merthyr Tydfil LA	307	287 93.5	281 91.5	187 60.9	324	297 91.7	295 91.0	291 89.8						
Rhondda Cynon Taff LA	1256	1169 93.1	1134 90.3	610 48.6	1306	1214 93.0	1194 91.4	1161 88.9						
<b>Health Board Total</b>	<b>1563</b>	<b>1456 93.2</b>	<b>1415 90.5</b>	<b>797 51.0</b>	<b>1630</b>	<b>1511 92.7</b>	<b>1489 91.3</b>	<b>1452 89.1</b>						
<b><u>Hywel Dda HB</u></b>														
Carmarthenshire LA	916	818 89.3	816 89.1	768 83.8	953	841 88.2	840 88.1	826 86.7						
Ceredigion LA	297	253 85.2	250 84.2	222 74.7	341	290 85.0	288 84.5	281 82.4						
Pembrokeshire LA	682	560 82.1	539 79.0	6 0.9	655	568 86.7	559 85.3	542 82.7						
<b>Health Board Total</b>	<b>1895</b>	<b>1631 86.1</b>	<b>1605 84.7</b>	<b>996 52.6</b>	<b>1949</b>	<b>1699 87.2</b>	<b>1687 86.6</b>	<b>1649 84.6</b>						
<b><u>Powys Teaching HB</u></b>														
Unknown	701	570 81.3	561 80.0	263 37.5	689	578 83.9	575 83.5	559 81.1						
Wales Total	97	67 69.1	66 68.0	36 37.1	106	70 66.0	67 63.2	67 63.2						
<b>Wales Total</b>	<b>16440</b>	<b>14438 87.8</b>	<b>13860 84.3</b>	<b>8454 51.4</b>	<b>16958</b>	<b>15102 89.1</b>	<b>14944 88.1</b>	<b>14496 85.5</b>						

\* Current campaign, immunisation sessions are still underway.

**Table 6.** MMR and Td/IPV vaccine uptake in children reaching their 15th birthday between 01/01/12 and 31/03/12 and resident on 01/05/12 (with breakdown of MMR1 and MMR2 coverage by sex).

Area	Resident children		MMR1		MMR2		Teenage 3 in 1 booster*		Resident girls		MMR1 (girls)		MMR2 (girls)		Resident boys		MMR1 (boys)		MMR2 (boys)	
	(n)	(n)	(%)	(n)	(%)	(n)	(%)	(n)	(n)	(n)	(%)	(n)	(%)	(n)	(n)	(%)	(n)	(%)		
<b><u>Abertawe Bro Morgannwg University HB</u></b>																				
Bridgend LA	443	406	91.6	382	86.2	269	60.7	207	189	91.3	181	87.4	236	217	91.9	201	85.2			
Neath Port Talbot LA	359	316	88.0	284	79.1	185	51.5	182	160	87.9	138	75.8	177	156	88.1	146	82.5			
Swansea LA	630	543	86.2	462	73.3	277	44.0	303	262	86.5	228	75.2	327	281	85.9	234	71.6			
<b>Health Board Total</b>	<b>1432</b>	<b>1265</b>	<b>88.3</b>	<b>1128</b>	<b>78.8</b>	<b>731</b>	<b>51.0</b>	<b>692</b>	<b>611</b>	<b>88.3</b>	<b>547</b>	<b>79.0</b>	<b>740</b>	<b>654</b>	<b>88.4</b>	<b>581</b>	<b>78.5</b>			
<b><u>Aneurin Bevan HB</u></b>																				
Blaenau Gwent LA	188	167	88.8	149	79.3	137	72.9	88	76	86.4	69	78.4	100	91	91.0	80	80.0			
Caerphilly LA	561	503	89.7	439	78.3	396	70.6	276	242	87.7	201	72.8	285	261	91.6	238	83.5			
Monmouthshire LA	286	235	82.2	206	72.0	194	67.8	136	106	77.9	94	69.1	150	129	86.0	112	74.7			
Newport LA	485	423	87.2	376	77.5	318	65.6	235	204	86.8	176	74.9	249	219	88.0	200	80.3			
Torfaen LA	317	288	90.9	269	84.9	224	70.7	157	143	91.1	136	86.6	160	145	90.6	133	83.1			
<b>Health Board Total</b>	<b>1837</b>	<b>1616</b>	<b>88.0</b>	<b>1439</b>	<b>78.3</b>	<b>1269</b>	<b>69.1</b>	<b>892</b>	<b>771</b>	<b>86.4</b>	<b>676</b>	<b>75.8</b>	<b>944</b>	<b>845</b>	<b>89.5</b>	<b>763</b>	<b>80.8</b>			
<b><u>Betsi Cadwaladr University HB</u></b>																				
Anglesey LA	215	204	94.9	190	88.4	102	47.4	112	104	92.9	96	85.7	103	100	97.1	94	91.3			
Conwy LA	309	295	95.5	275	89.0	169	54.7	140	132	94.3	123	87.9	168	162	96.4	151	89.9			
Denbighshire LA	259	243	93.8	211	81.5	180	69.5	138	131	94.9	113	81.9	121	112	92.6	98	81.0			
Flintshire LA	435	410	94.3	382	87.8	301	69.2	215	203	94.4	192	89.3	220	207	94.1	190	86.4			
Gwynedd LA	358	338	94.4	310	86.6	202	56.4	163	153	93.9	141	86.5	195	185	94.9	169	86.7			
Wrexham LA	340	316	92.9	283	83.2	137	40.3	143	135	94.4	124	86.7	197	181	91.9	159	80.7			
<b>Health Board Total</b>	<b>1916</b>	<b>1806</b>	<b>94.3</b>	<b>1651</b>	<b>86.2</b>	<b>1091</b>	<b>56.9</b>	<b>911</b>	<b>858</b>	<b>94.2</b>	<b>789</b>	<b>86.6</b>	<b>1004</b>	<b>947</b>	<b>94.3</b>	<b>861</b>	<b>85.8</b>			
<b><u>Cardiff and Vale University HB</u></b>																				
Cardiff LA	952	859	90.2	773	81.2	658	69.1	426	383	89.9	345	81.0	526	476	90.5	428	81.4			
Vale of Glamorgan LA	396	357	90.2	337	85.1	310	78.3	199	175	87.9	164	82.4	197	182	92.4	173	87.8			
<b>Health Board Total</b>	<b>1348</b>	<b>1216</b>	<b>90.2</b>	<b>1110</b>	<b>82.3</b>	<b>968</b>	<b>71.8</b>	<b>625</b>	<b>558</b>	<b>89.3</b>	<b>509</b>	<b>81.4</b>	<b>723</b>	<b>658</b>	<b>91.0</b>	<b>601</b>	<b>83.1</b>			
<b><u>Cwm Taf HB</u></b>																				
Merthyr Tydfil LA	199	184	92.5	163	81.9	100	50.3	102	93	91.2	83	81.4	97	91	93.8	80	82.5			
Rhondda Cynon Taff LA	680	625	91.9	566	83.2	309	45.4	327	304	93.0	276	84.4	353	321	90.9	290	82.2			
<b>Health Board Total</b>	<b>879</b>	<b>809</b>	<b>92.0</b>	<b>729</b>	<b>82.9</b>	<b>409</b>	<b>46.5</b>	<b>429</b>	<b>397</b>	<b>92.5</b>	<b>359</b>	<b>83.7</b>	<b>450</b>	<b>412</b>	<b>91.6</b>	<b>370</b>	<b>82.2</b>			
<b><u>Hywel Dda HB</u></b>																				
Carmarthenshire LA	521	471	90.4	412	79.1	294	56.4	243	229	94.2	195	80.2	278	242	87.1	217	78.1			
Ceredigion LA	168	154	91.7	138	82.1	34	20.2	80	72	90.0	67	83.8	88	82	93.2	71	80.7			
Pembrokeshire LA	354	307	86.7	271	76.6	64	18.1	159	134	84.3	124	78.0	195	173	88.7	147	75.4			
<b>Health Board Total</b>	<b>1043</b>	<b>932</b>	<b>89.4</b>	<b>821</b>	<b>78.7</b>	<b>392</b>	<b>37.6</b>	<b>482</b>	<b>435</b>	<b>90.2</b>	<b>386</b>	<b>80.1</b>	<b>561</b>	<b>497</b>	<b>88.6</b>	<b>435</b>	<b>77.5</b>			
<b><u>Powys Teaching HB</u></b>	<b>359</b>	<b>305</b>	<b>85.0</b>	<b>257</b>	<b>71.6</b>	<b>125</b>	<b>34.8</b>	<b>167</b>	<b>145</b>	<b>86.8</b>	<b>125</b>	<b>74.9</b>	<b>192</b>	<b>160</b>	<b>83.3</b>	<b>132</b>	<b>68.8</b>			
Unknown	73	52	71.2	47	64.4	32	43.8	35	28	80.0	26	74.3	37	24	64.9	21	56.8			
<b>Wales Total</b>	<b>8887</b>	<b>8001</b>	<b>90.0</b>	<b>7182</b>	<b>80.8</b>	<b>5017</b>	<b>56.5</b>	<b>4233</b>	<b>3803</b>	<b>89.8</b>	<b>3417</b>	<b>80.7</b>	<b>4651</b>	<b>4197</b>	<b>90.2</b>	<b>3764</b>	<b>80.9</b>			

\* Teenage booster dose of diphtheria, tetanus and polio (diphtheria used as proxy)

**Table 7.** MMR and Td/IPV vaccine uptake in children reaching their 16th birthday between 01/01/12 and 31/03/12 and resident on 01/05/12 (with breakdown of MMR1 and MMR2 coverage by sex).

Area	Resident children		MMR1		MMR2		Teenage 3 in 1 booster*		Resident girls		MMR1 (girls)		MMR2 (girls)		Resident boys		MMR1 (boys)		MMR2 (boys)	
	(n)	(n)	(%)	(n)	(%)	(n)	(%)	(n)	(n)	(n)	(%)	(n)	(%)	(n)	(n)	(n)	(%)	(n)	(%)	
<b><u>Abertawe Bro Morgannwg University HB</u></b>																				
Bridgend LA	373	343	92.0	331	88.7	315	84.5	171	153	89.5	147	86.0	202	190	94.1	184	91.1			
Neath Port Talbot LA	393	367	93.4	338	86.0	324	82.4	190	178	93.7	162	85.3	203	189	93.1	176	86.7			
Swansea LA	644	587	91.1	517	80.3	548	85.1	316	296	93.7	256	81.0	328	291	88.7	261	79.6			
<b>Health Board Total</b>	<b>1410</b>	<b>1297</b>	<b>92.0</b>	<b>1186</b>	<b>84.1</b>	<b>1187</b>	<b>84.2</b>	<b>677</b>	<b>627</b>	<b>92.6</b>	<b>565</b>	<b>83.5</b>	<b>733</b>	<b>670</b>	<b>91.4</b>	<b>621</b>	<b>84.7</b>			
<b><u>Aneurin Bevan HB</u></b>																				
Blaenau Gwent LA	214	204	95.3	186	86.9	168	78.5	111	106	95.5	98	88.3	103	98	95.1	88	85.4			
Caerphilly LA	517	466	90.1	410	79.3	396	76.6	237	209	88.2	188	79.3	280	257	91.8	222	79.3			
Monmouthshire LA	267	215	80.5	181	67.8	195	73.0	133	107	80.5	88	66.2	134	108	80.6	93	69.4			
Newport LA	467	414	88.7	363	77.7	347	74.3	213	183	85.9	161	75.6	254	231	90.9	202	79.5			
Torfaen LA	274	249	90.9	228	83.2	213	77.7	142	125	88.0	114	80.3	132	124	93.9	114	86.4			
<b>Health Board Total</b>	<b>1739</b>	<b>1548</b>	<b>89.0</b>	<b>1368</b>	<b>78.7</b>	<b>1319</b>	<b>75.8</b>	<b>836</b>	<b>730</b>	<b>87.3</b>	<b>649</b>	<b>77.6</b>	<b>903</b>	<b>818</b>	<b>90.6</b>	<b>719</b>	<b>79.6</b>			
<b><u>Betsi Cadwaladr University HB</u></b>																				
Anglesey LA	196	190	96.9	177	90.3	136	69.4	94	91	96.8	88	93.6	102	99	97.1	89	87.3			
Conwy LA	283	268	94.7	257	90.8	239	84.5	152	142	93.4	137	90.1	131	126	96.2	120	91.6			
Denbighshire LA	266	255	95.9	242	91.0	226	85.0	125	120	96.0	117	93.6	140	135	96.4	125	89.3			
Flintshire LA	452	438	96.9	408	90.3	405	89.6	229	226	98.7	215	93.9	223	212	95.1	193	86.5			
Gwynedd LA	309	296	95.8	280	90.6	249	80.6	148	142	95.9	134	90.5	161	154	95.7	146	90.7			
Wrexham LA	355	334	94.1	316	89.0	289	81.4	162	154	95.1	149	92.0	193	180	93.3	167	86.5			
<b>Health Board Total</b>	<b>1861</b>	<b>1781</b>	<b>95.7</b>	<b>1680</b>	<b>90.3</b>	<b>1544</b>	<b>83.0</b>	<b>910</b>	<b>875</b>	<b>96.2</b>	<b>840</b>	<b>92.3</b>	<b>950</b>	<b>906</b>	<b>95.4</b>	<b>840</b>	<b>88.4</b>			
<b><u>Cardiff and Vale University HB</u></b>																				
Cardiff LA	960	888	92.5	807	84.1	685	71.4	454	419	92.3	380	83.7	506	469	92.7	427	84.4			
Vale of Glamorgan LA	364	336	92.3	311	85.4	290	79.7	162	152	93.8	141	87.0	202	184	91.1	170	84.2			
<b>Health Board Total</b>	<b>1324</b>	<b>1224</b>	<b>92.4</b>	<b>1118</b>	<b>84.4</b>	<b>975</b>	<b>73.6</b>	<b>616</b>	<b>571</b>	<b>92.7</b>	<b>521</b>	<b>84.6</b>	<b>708</b>	<b>653</b>	<b>92.2</b>	<b>597</b>	<b>84.3</b>			
<b><u>Cwm Taf HB</u></b>																				
Merthyr Tydfil LA	186	169	90.9	153	82.3	166	89.2	84	77	91.7	67	79.8	102	92	90.2	86	84.3			
Rhondda Cynon Taff LA	627	593	94.6	546	87.1	534	85.2	307	287	93.5	262	85.3	320	306	95.6	284	88.8			
<b>Health Board Total</b>	<b>813</b>	<b>762</b>	<b>93.7</b>	<b>699</b>	<b>86.0</b>	<b>700</b>	<b>86.1</b>	<b>391</b>	<b>364</b>	<b>93.1</b>	<b>329</b>	<b>84.1</b>	<b>422</b>	<b>398</b>	<b>94.3</b>	<b>370</b>	<b>87.7</b>			
<b><u>Hywel Dda HB</u></b>																				
Carmarthenshire LA	526	477	90.7	431	81.9	379	72.1	254	237	93.3	215	84.6	272	240	88.2	216	79.4			
Ceredigion LA	162	148	91.4	131	80.9	127	78.4	69	61	88.4	56	81.2	93	87	93.5	75	80.6			
Pembrokeshire LA	354	320	90.4	283	79.9	93	26.3	179	165	92.2	149	83.2	175	155	88.6	134	76.6			
<b>Health Board Total</b>	<b>1042</b>	<b>945</b>	<b>90.7</b>	<b>845</b>	<b>81.1</b>	<b>599</b>	<b>57.5</b>	<b>502</b>	<b>463</b>	<b>92.2</b>	<b>420</b>	<b>83.7</b>	<b>540</b>	<b>482</b>	<b>89.3</b>	<b>425</b>	<b>78.7</b>			
<b><u>Powys Teaching HB</u></b>																				
Unknown	74	50	67.6	44	59.5	35	47.3	32	24	75.0	21	65.6	42	26	61.9	23	54.8			
<b>Wales Total</b>	<b>8618</b>	<b>7911</b>	<b>91.8</b>	<b>7198</b>	<b>83.5</b>	<b>6638</b>	<b>77.0</b>	<b>4138</b>	<b>3803</b>	<b>91.9</b>	<b>3467</b>	<b>83.8</b>	<b>4479</b>	<b>4108</b>	<b>91.7</b>	<b>3731</b>	<b>83.3</b>			

\* Teenage booster dose of diphtheria, tetanus and polio (diphtheria used as proxy).

**Table 8.** Uptake of HPV vaccine in girls reaching appropriate birthdays between 01/09/11 and 31/08/12 and resident in Wales on 01/05/12.

Area	15 years							16 years							17 years						
	Resident girls	1 dose		2 doses		3 doses		Resident girls	1 dose		2 doses		3 doses		Resident girls	1 dose		2 doses		3 doses	
	(n)	(%)	(n)	(%)	(n)	(%)	(n)	(n)	(%)	(n)	(%)	(n)	(%)	(n)	(n)	(%)	(n)	(%)	(n)	(%)	
<b><u>ABM ULHB</u></b>																					
Bridgend LA	830	756	91.1	752	90.6	742	89.4	710	640	90.1	637	89.7	632	89.0	714	624	87.4	616	86.3	604	84.6
Neath Port Talbot LA	806	711	88.2	696	86.4	684	84.9	779	719	92.3	714	91.7	707	90.8	804	707	87.9	693	86.2	679	84.5
Swansea LA	1259	1085	86.2	1076	85.5	1056	83.9	1260	1167	92.6	1163	92.3	1153	91.5	1283	1082	84.3	1062	82.8	1019	79.4
<b>Health Board Total</b>	<b>2895</b>	<b>2552</b>	<b>88.2</b>	<b>2524</b>	<b>87.2</b>	<b>2482</b>	<b>85.7</b>	<b>2749</b>	<b>2526</b>	<b>91.9</b>	<b>2514</b>	<b>91.5</b>	<b>2492</b>	<b>90.7</b>	<b>2801</b>	<b>2413</b>	<b>86.1</b>	<b>2371</b>	<b>84.6</b>	<b>2302</b>	<b>82.2</b>
<b><u>Aneurin Bevan LHB</u></b>																					
Blaenau Gwent LA	393	371	94.4	366	93.1	357	90.8	409	394	96.3	393	96.1	383	93.6	421	393	93.3	388	92.2	381	90.5
Caerphilly LA	1080	958	88.7	950	88.0	928	85.9	1037	954	92.0	948	91.4	933	90.0	1055	884	83.8	867	82.2	835	79.1
Monmouthshire LA	588	446	75.9	439	74.7	432	73.5	546	417	76.4	415	76.0	334	61.2	504	388	77.0	379	75.2	371	73.6
Newport LA	940	776	82.6	774	82.3	758	80.6	910	774	85.1	767	84.3	728	80.0	989	805	81.4	788	79.7	763	77.1
Torfaen LA	606	548	90.4	547	90.3	541	89.3	550	516	93.8	514	93.5	505	91.8	600	516	86.0	512	85.3	495	82.5
<b>Health Board Total</b>	<b>3607</b>	<b>3099</b>	<b>85.9</b>	<b>3076</b>	<b>85.3</b>	<b>3016</b>	<b>83.6</b>	<b>3452</b>	<b>3055</b>	<b>88.5</b>	<b>3037</b>	<b>88.0</b>	<b>2883</b>	<b>83.5</b>	<b>3569</b>	<b>2986</b>	<b>83.7</b>	<b>2934</b>	<b>82.2</b>	<b>2845</b>	<b>79.7</b>
<b><u>Betsi Cadwaladr ULHB</u></b>																					
Anglesey LA	393	336	85.5	332	84.5	322	81.9	387	345	89.1	343	88.6	334	86.3	364	290	79.7	284	78.0	273	75.0
Conwy LA	587	506	86.2	506	86.2	497	84.7	595	532	89.4	531	89.2	524	88.1	603	492	81.6	482	79.9	459	76.1
Denbighshire LA	592	498	84.1	496	83.8	480	81.1	505	473	93.7	466	92.3	457	90.5	564	474	84.0	459	81.4	441	78.2
Flintshire LA	885	786	88.8	781	88.2	775	87.6	871	823	94.5	822	94.4	811	93.1	876	785	89.6	779	88.9	764	87.2
Gwynedd LA	687	571	83.1	567	82.5	560	81.5	628	543	86.5	538	85.7	526	83.8	678	565	83.3	560	82.6	549	81.0
Wrexham LA	657	570	86.8	562	85.5	563	85.7	723	683	94.5	676	93.5	670	92.7	660	567	85.9	556	84.2	553	83.8
<b>Health Board Total</b>	<b>3801</b>	<b>3267</b>	<b>86.0</b>	<b>3244</b>	<b>85.3</b>	<b>3197</b>	<b>84.1</b>	<b>3709</b>	<b>3399</b>	<b>91.6</b>	<b>3376</b>	<b>91.0</b>	<b>3322</b>	<b>89.6</b>	<b>3745</b>	<b>3173</b>	<b>84.7</b>	<b>3120</b>	<b>83.3</b>	<b>3039</b>	<b>81.1</b>
<b><u>Cardiff &amp; Vale ULHB</u></b>																					
Cardiff LA	1776	1524	85.8	1478	83.2	1423	80.1	1861	1630	87.6	1610	86.5	1551	83.3	1865	1602	85.9	1559	83.6	1460	78.3
Vale of Glamorgan LA	817	722	88.4	701	85.8	671	82.1	759	697	91.8	694	91.4	664	87.5	792	671	84.7	646	81.6	593	74.9
<b>Health Board Total</b>	<b>2593</b>	<b>2246</b>	<b>86.6</b>	<b>2179</b>	<b>84.0</b>	<b>2094</b>	<b>80.8</b>	<b>2620</b>	<b>2327</b>	<b>88.8</b>	<b>2304</b>	<b>87.9</b>	<b>2215</b>	<b>84.5</b>	<b>2657</b>	<b>2273</b>	<b>85.5</b>	<b>2205</b>	<b>83.0</b>	<b>2053</b>	<b>77.3</b>
<b><u>Cwm Taf LHB</u></b>																					
Merthyr Tydfil LA	379	341	90.0	338	89.2	319	84.2	359	339	94.4	339	94.4	334	93.0	347	313	90.2	311	89.6	293	84.4
Rhondda Cynon Taff LA	1325	1214	91.6	1204	90.9	1191	89.9	1285	1201	93.5	1195	93.0	1183	92.1	1286	1148	89.3	1138	88.5	1108	86.2
<b>Health Board Total</b>	<b>1704</b>	<b>1555</b>	<b>91.3</b>	<b>1542</b>	<b>90.5</b>	<b>1510</b>	<b>88.6</b>	<b>1644</b>	<b>1540</b>	<b>93.7</b>	<b>1534</b>	<b>93.3</b>	<b>1517</b>	<b>92.3</b>	<b>1633</b>	<b>1461</b>	<b>89.5</b>	<b>1449</b>	<b>88.7</b>	<b>1401</b>	<b>85.8</b>
<b><u>Hywel Dda LHB</u></b>																					
Carmarthenshire LA	1003	831	82.9	819	81.7	810	80.8	1004	904	90.0	901	89.7	881	87.7	1001	766	76.5	754	75.3	740	73.9
Ceredigion LA	342	273	79.8	271	79.2	264	77.2	303	255	84.2	254	83.8	250	82.5	345	266	77.1	265	76.8	261	75.7
Pembrokeshire LA	678	573	84.5	566	83.5	546	80.5	673	586	87.1	582	86.5	574	85.3	705	526	74.6	512	72.6	474	67.2
<b>Health Board Total</b>	<b>2023</b>	<b>1677</b>	<b>82.9</b>	<b>1656</b>	<b>81.9</b>	<b>1620</b>	<b>80.1</b>	<b>1980</b>	<b>1745</b>	<b>88.1</b>	<b>1737</b>	<b>87.7</b>	<b>1705</b>	<b>86.1</b>	<b>2051</b>	<b>1558</b>	<b>76.0</b>	<b>1531</b>	<b>74.6</b>	<b>1475</b>	<b>71.9</b>
<b><u>Powys Teaching LHB</u></b>	<b>736</b>	<b>588</b>	<b>79.9</b>	<b>588</b>	<b>79.9</b>	<b>581</b>	<b>78.9</b>	<b>690</b>	<b>603</b>	<b>87.4</b>	<b>601</b>	<b>87.1</b>	<b>594</b>	<b>86.1</b>	<b>734</b>	<b>595</b>	<b>81.1</b>	<b>586</b>	<b>79.8</b>	<b>578</b>	<b>78.7</b>
Unknown	134	72	53.7	71	53.0	68	50.7	130	88	67.7	88	67.7	84	64.6	151	77	51.0	77	51.0	71	47.0
<b>Wales Total</b>	<b>17493</b>	<b>15056</b>	<b>86.1</b>	<b>14880</b>	<b>85.1</b>	<b>14568</b>	<b>83.3</b>	<b>16974</b>	<b>15283</b>	<b>90.0</b>	<b>15191</b>	<b>89.5</b>	<b>14812</b>	<b>87.3</b>	<b>17341</b>	<b>14536</b>	<b>83.8</b>	<b>14273</b>	<b>82.3</b>	<b>13764</b>	<b>79.4</b>

**Table 9.** Uptake of BCG immunisation in children reaching their 1<sup>st</sup>, 2<sup>nd</sup>, 5<sup>th</sup> and 16<sup>th</sup> birthdays between 01/01/12 and 31/03/12 and resident on 01/05/12.

Area	1 yr			2 yrs			5 yrs			16 yrs		
	Resident children	BCG Immunised (n)	(%)	Resident children	BCG Immunised (n)	(%)	Resident children	BCG Immunised (n)	(%)	Resident children	BCG Immunised (n)	(%)
<b>Abertawe Bro Morgannwg University</b>												
Bridgend LA	386	13	3.4	433	9	2.1	372	6	1.6	373	2	0.5
Neath Port Talbot LA	415	15	3.6	388	12	3.1	356	9	2.5	393	7	1.8
Swansea LA	628	65	10.4	722	78	10.8	609	58	9.5	644	20	3.1
<b>Health Board Total</b>	<b>1429</b>	<b>93</b>	<b>6.5</b>	<b>1543</b>	<b>99</b>	<b>6.4</b>	<b>1337</b>	<b>73</b>	<b>5.5</b>	<b>1410</b>	<b>29</b>	<b>2.1</b>
<b>Aneurin Bevan</b>												
Blaenau Gwent LA	183	4	2.2	197	3	1.5	171	3	1.8	214	1	0.5
Caerphilly LA	495	7	1.4	537	13	2.4	470	10	2.1	517	3	0.6
Monmouthshire LA	187	3	1.6	214	8	3.7	210	5	2.4	267	2	0.7
Newport LA	459	65	14.2	448	69	15.4	437	53	12.1	467	12	2.6
Torfaen LA	266	9	3.4	248	4	1.6	246	6	2.4	274	3	1.1
<b>Health Board Total</b>	<b>1590</b>	<b>88</b>	<b>5.5</b>	<b>1644</b>	<b>97</b>	<b>5.9</b>	<b>1534</b>	<b>77</b>	<b>5.0</b>	<b>1739</b>	<b>21</b>	<b>1.2</b>
<b>Betsi Cadwalladr University</b>												
Anglesey LA	166	2	1.2	185	4	2.2	193	5	2.6	196	4	2.0
Conwy LA	294	13	4.4	303	8	2.6	241	16	6.6	283	11	3.9
Denbighshire LA	279	9	3.2	257	13	5.1	240	13	5.4	266	13	4.9
Flintshire LA	379	17	4.5	414	10	2.4	402	19	4.7	452	13	2.9
Gwynedd LA	282	7	2.5	310	11	3.5	290	3	1.0	309	2	0.6
Wrexham LA	424	24	5.7	396	27	6.8	387	39	10.1	355	23	6.5
<b>Health Board Total</b>	<b>1824</b>	<b>72</b>	<b>3.9</b>	<b>1865</b>	<b>73</b>	<b>3.9</b>	<b>1753</b>	<b>95</b>	<b>5.4</b>	<b>1861</b>	<b>66</b>	<b>3.5</b>
<b>Cardiff and Vale University</b>												
Cardiff LA	1143	228	19.9	1132	226	20.0	991	225	22.7	960	103	10.7
Vale of Glamorgan LA	360	10	2.8	388	10	2.6	361	19	5.3	364	13	3.6
<b>Health Board Total</b>	<b>1503</b>	<b>238</b>	<b>15.8</b>	<b>1520</b>	<b>236</b>	<b>15.5</b>	<b>1352</b>	<b>244</b>	<b>18.0</b>	<b>1324</b>	<b>116</b>	<b>8.8</b>
<b>Cwm Taf</b>												
Merthyr Tydfil LA	169	10	5.9	164	6	3.7	160	2	1.3	186	1	0.5
Rhondda Cynon Taff LA	764	22	2.9	740	15	2.0	613	19	3.1	627	6	1.0
<b>Health Board Total</b>	<b>933</b>	<b>32</b>	<b>3.4</b>	<b>904</b>	<b>21</b>	<b>2.3</b>	<b>773</b>	<b>21</b>	<b>2.7</b>	<b>813</b>	<b>7</b>	<b>0.9</b>
<b>Hywel Dda</b>												
Carmarthenshire LA	491	11	2.2	471	6	1.3	485	24	4.9	526	5	1.0
Ceredigion LA	154	8	5.2	172	12	7.0	187	3	1.6	162	4	2.5
Pembrokeshire LA	336	7	2.1	314	10	3.2	300	7	2.3	354	3	0.8
<b>Health Board Total</b>	<b>981</b>	<b>26</b>	<b>2.7</b>	<b>957</b>	<b>28</b>	<b>2.9</b>	<b>972</b>	<b>34</b>	<b>3.5</b>	<b>1042</b>	<b>12</b>	<b>1.2</b>
<b>Powys Teaching Health Board</b>	<b>271</b>	<b>11</b>	<b>4.1</b>	<b>280</b>	<b>10</b>	<b>3.6</b>	<b>299</b>	<b>5</b>	<b>1.7</b>	<b>355</b>	<b>7</b>	<b>2.0</b>
Unknown	36	1	2.8	36	0	0.0	43	0	0.0	74	2	2.7
<b>Wales Total</b>	<b>8567</b>	<b>561</b>	<b>6.5</b>	<b>8749</b>	<b>564</b>	<b>6.4</b>	<b>8063</b>	<b>549</b>	<b>6.8</b>	<b>8618</b>	<b>260</b>	<b>3.0</b>

Data reflects immunisations given and recorded on the NCCHD (following notifications to local Child Health Administration Offices), may be subject to under-reporting. BCG is not a routinely scheduled immunisation.

**Table 10.** Uptake of hepatitis B immunisation in children receiving their first dose within seven days of birth, reaching their 1<sup>st</sup>, 2<sup>nd</sup>, 5<sup>th</sup> and 16<sup>th</sup> birthdays during 01/01/12 and 31/03/12 and resident on 01/05/12, and percentage who are recorded as completing doses 1 to 3.

Area	1yr					2yrs					5yrs					16yrs				
	Resident children	HepB dose 1	HepB dose 2	HepB dose 3	Completed 3 doses	Resident children	HepB dose 1	HepB dose 2	HepB dose 3	Completed 3 doses	Resident children	HepB dose 1	HepB dose 2	HepB dose 3	Completed 3 doses	Resident children	HepB dose 1	HepB dose 2	HepB dose 3	Completed 3 doses
<b>Abertawe Bro Morgannwg University</b>	(n)	(n)	(n)	(n)	(%)	(n)	(n)	(n)	(n)	(%)	(n)	(n)	(n)	(n)	(%)	(n)	(n)	(n)	(n)	(%)
Bridgend LA	386	5	5	4	80.0	433	2	1	0	0.0	372	1	1	1	100.0	373	0	0	0	-
Neath Port Talbot LA	415	3	3	2	66.7	388	4	3	2	50.0	356	1	1	1	100.0	393	0	0	0	-
Swansea LA	628	3	3	3	100.0	722	7	7	6	85.7	609	13	13	12	92.3	644	2	2	2	100.0
<b>Health Board Total</b>	<b>1429</b>	<b>11</b>	<b>11</b>	<b>9</b>	<b>81.8</b>	<b>1543</b>	<b>13</b>	<b>11</b>	<b>8</b>	<b>61.5</b>	<b>1337</b>	<b>15</b>	<b>15</b>	<b>14</b>	<b>93.3</b>	<b>1410</b>	<b>2</b>	<b>2</b>	<b>2</b>	<b>100.0</b>
<b>Aneurin Bevan</b>																				
Blaenau Gwent LA	183	1	1	1	100.0	197	2	2	2	100.0	171	1	1	1	100.0	214	0	0	0	-
Caerphilly LA	495	4	3	1	25.0	537	0	0	0	-	470	3	2	2	66.7	517	0	0	0	-
Monmouthshire LA	187	0	0	0	-	214	1	1	1	100.0	210	0	0	0	-	267	0	0	0	-
Newport LA	459	11	9	8	72.7	448	4	3	3	75.0	437	9	9	9	100.0	467	2	2	2	100.0
Torfaen LA	266	0	0	0	-	248	1	1	1	100.0	246	2	1	1	50.0	274	0	0	0	-
<b>Health Board Total</b>	<b>1590</b>	<b>16</b>	<b>13</b>	<b>10</b>	<b>62.5</b>	<b>1644</b>	<b>8</b>	<b>7</b>	<b>7</b>	<b>87.5</b>	<b>1534</b>	<b>15</b>	<b>13</b>	<b>13</b>	<b>86.7</b>	<b>1739</b>	<b>2</b>	<b>2</b>	<b>2</b>	<b>100.0</b>
<b>Betsi Cadwaladr University</b>																				
Anglesey LA	166	0	0	0	-	185	0	0	0	-	193	1	1	1	100.0	196	1	1	1	100.0
Conwy LA	294	0	0	0	-	303	3	3	2	66.7	241	0	0	0	-	283	0	0	0	-
Denbighshire LA	279	0	0	0	-	257	0	0	0	-	240	1	1	1	100.0	266	0	0	0	-
Flintshire LA	379	2	2	0	0.0	414	0	0	0	-	402	2	1	1	50.0	452	1	1	0	0.0
Gwynedd LA	282	0	0	0	-	310	1	1	1	100.0	290	1	1	1	100.0	309	0	0	0	-
Wrexham LA	424	1	1	1	100.0	396	4	3	2	50.0	387	4	4	4	100.0	355	2	2	2	100.0
<b>Health Board Total</b>	<b>1824</b>	<b>3</b>	<b>3</b>	<b>1</b>	<b>33.3</b>	<b>1865</b>	<b>8</b>	<b>7</b>	<b>5</b>	<b>62.5</b>	<b>1753</b>	<b>9</b>	<b>8</b>	<b>8</b>	<b>88.9</b>	<b>1861</b>	<b>4</b>	<b>4</b>	<b>3</b>	<b>75.0</b>
<b>Cardiff and Vale University</b>																				
Cardiff LA	1143	10	8	5	50.0	1132	16	15	13	81.3	991	20	19	19	95.0	960	9	8	8	88.9
Vale of Glamorgan LA	360	2	2	1	50.0	388	1	1	1	100.0	361	3	2	2	66.7	364	1	1	1	100.0
<b>Health Board Total</b>	<b>1503</b>	<b>12</b>	<b>10</b>	<b>6</b>	<b>50.0</b>	<b>1520</b>	<b>17</b>	<b>16</b>	<b>14</b>	<b>82.4</b>	<b>1352</b>	<b>23</b>	<b>21</b>	<b>21</b>	<b>91.3</b>	<b>1324</b>	<b>10</b>	<b>9</b>	<b>9</b>	<b>90.0</b>
<b>Cwm Taf</b>																				
Merthyr Tydfil LA	169	0	0	0	-	164	0	0	0	-	160	1	0	0	0.0	186	1	0	0	0.0
Rhondda Cynon Taff LA	764	6	6	5	83.3	740	1	0	0	0.0	613	5	4	2	40.0	627	0	0	0	-
<b>Health Board Total</b>	<b>933</b>	<b>6</b>	<b>6</b>	<b>5</b>	<b>83.3</b>	<b>904</b>	<b>1</b>	<b>0</b>	<b>0</b>	<b>0.0</b>	<b>773</b>	<b>6</b>	<b>4</b>	<b>2</b>	<b>33.3</b>	<b>813</b>	<b>1</b>	<b>0</b>	<b>0</b>	<b>0.0</b>
<b>Hywel Dda</b>																				
Carmarthenshire LA	491	4	3	3	75.0	471	2	2	2	100.0	485	7	6	6	85.7	526	0	0	0	-
Ceredigion LA	154	1	1	1	100.0	172	0	0	0	-	187	1	1	1	100.0	162	0	0	0	-
Pembrokeshire LA	336	0	0	0	-	314	2	2	0	0.0	300	3	3	0	0.0	354	0	0	0	-
<b>Health Board Total</b>	<b>981</b>	<b>5</b>	<b>4</b>	<b>4</b>	<b>80.0</b>	<b>957</b>	<b>4</b>	<b>4</b>	<b>2</b>	<b>50.0</b>	<b>972</b>	<b>11</b>	<b>10</b>	<b>7</b>	<b>63.6</b>	<b>1042</b>	<b>0</b>	<b>0</b>	<b>0</b>	<b>-</b>
<b>Powys Teaching Health Board</b>	<b>271</b>	<b>2</b>	<b>2</b>	<b>1</b>	<b>50.0</b>	<b>280</b>	<b>0</b>	<b>0</b>	<b>0</b>	<b>-</b>	<b>299</b>	<b>0</b>	<b>0</b>	<b>0</b>	<b>-</b>	<b>355</b>	<b>1</b>	<b>1</b>	<b>1</b>	<b>100.0</b>
Unknown	36	0	0	0	-	36	0	0	0	-	43	0	0	0	-	74	0	0	0	-
<b>Wales Total</b>	<b>8567</b>	<b>55</b>	<b>49</b>	<b>36</b>	<b>65.5</b>	<b>8749</b>	<b>51</b>	<b>45</b>	<b>36</b>	<b>70.6</b>	<b>8063</b>	<b>79</b>	<b>71</b>	<b>65</b>	<b>82.3</b>	<b>8618</b>	<b>20</b>	<b>18</b>	<b>17</b>	<b>85.0</b>

Data reflects immunisations given and recorded on the NCCHD (following notifications to local Child Health Administration Offices), may be subject to under-reporting. Hepatitis B is not a routinely scheduled immunisation. Only children who receive the first dose of hepatitis B vaccine within seven days of birth (suggesting high risk status) are included in this table