

Vaccine Uptake in Children in Wales October to December 2016

COVER 121: Wales February 2017



Key points

- For children at one year of age, uptake of the “5 in 1”, MenC, pneumococcal conjugate and MenB vaccines exceeded 96% this quarter. Uptake of the “5 in 1” vaccine was 95% or higher in six Health Boards (HB) and in 18 Local Authority (LA) areas.
- Uptake of two doses of rotavirus vaccine remained stable at 94%. Two HBs and nine LA areas had an uptake above 95%.
- Uptake of the first dose of MMR vaccine in two year old children fell just below 95% this quarter for the first time in four years. Three HBs and 12 LA areas achieved an uptake of 95% or over.
- The proportion of children up to date with all routine immunisations by four years of age increased slightly to 86%. For children reaching their fifth birthday this quarter, 89% were up to date.
- Uptake of the second MMR dose by five years of age remained stable at 91%.
- Uptake of the “4 in 1” pre-school booster in five year old children increased to 93%.
- Vaccination sessions for the first dose of the Human Papillomavirus (HPV) vaccine schedule in girls in the 2016-17 School Year 8 (12-13 year olds) and School Year 9 (13-14 year olds) are currently underway. HPV vaccination uptakes presented in this report will increase over the next three quarters as more vaccination sessions take place.
- The MenACWY vaccine catch-up programme for school aged-children is ongoing. Coverage of MenACWY vaccine in the 2015-16 routine Year 9 cohort, now in Year 10 is 80%, and coverage in the 2015-16 school Year 11 cohort, now in Year 12 (16-17 year olds) is 78%. In the 2016-17 School Years 9 and 11, uptakes are currently 9% and 7% respectively.
- Coverage of one dose of MMR vaccine in the 2016-17 School Year 10 was 93% and coverage of a completed two dose course was 87%.
- Coverage of the Td/IPV teenage booster in the 2016-17 School Year 10 was 82%.

Background

These results are for children living in Wales in December 2016 and reaching their first, second, fourth, fifth and 16th birthdays during the quarter 01/10/2016 to 31/12/2016. Uptake of key immunisation in older children, which are mainly provided through school based programmes in all areas other than Cardiff and Vale University Health Board, are presented as school year cohorts (children reaching their 14th, 15th and 16th birthdays between 01/09/2016 and 31/08/2017). Current uptake of HPV vaccination¹ dose 1 in girls in the 2016-17 School Years 8, 9 and 10 is also presented. All of these school year groups will have been on the new, two dose HPV vaccine schedule. BCG and hepatitis B immunisation uptake data are also presented here. BCG and hepatitis B immunisations are not part of the routine childhood schedule and are given selectively following risk assessment; further information on circumstances in which these immunisations should be given can be found in: Immunisation Against Infectious Disease (The Green Book, available from <http://immunisation.dh.gov.uk/category/the-green-book/>). Coverage of neonatal hepatitis B immunisation is presented here, using data from the Public Health Wales Neonatal Hepatitis B database.

¹ HPV vaccination protects girls against cervical cancer associated with HPV types 16 and 18.

Findings

1. Uptake of all three doses of the combined “5 in 1” DTaP/IPV/Hib² vaccine, scheduled at 2, 3 and 4 months of age, in children reaching their first birthday remained stable this quarter at 96.2%. Uptake ranged by HB from 94.8% (Hywel Dda University HB) to 97.7% (Cwm Taf University HB) and by LA from 94.0% (Pembrokeshire) to 98.8% (Anglesey). Six health boards and 18 of the 22 LA areas achieved the target 95% uptake (Figures 2 and 5, Tables 2 and 3).
2. National uptake of a completed one dose course of MenC³ vaccine in children reaching their first birthday this quarter was 96.2% compared to 96.8% last quarter. Uptake in health boards ranged from 95.2% (Hywel Dda University HB) to 98.0% (Cwm Taf University HB) and ranged by LA from 92.5% (Gwynedd) to 98.8% (Anglesey and Merthyr Tydfil). All seven Health Boards and 18 LA areas achieved an uptake in excess of the 95% target (Figures 1 and 2, Tables 2 and 3).
3. Uptake of a complete two dose primary course of pneumococcal conjugate vaccination (PCV2³) in children reaching their first birthday was 96.2% this quarter compared to 96.4% last quarter, ranging by LA from 93.8% (Denbighshire) to 98.2% (Merthyr Tydfil). Five HBs and 16 LA areas achieved the target 95% uptake (Figures 1 and 2, Table 3).
4. Uptake of two doses of MenB vaccine, scheduled at two and four months of age, in children reaching their first birthday was 95.4% this quarter compared to 95.0% last quarter. Uptake in health boards ranged from 93.5% (Cardiff and Vale University HB) to 97.2% (Cwm Taf University HB) and ranged by LA from 92.6% (Denbighshire) to 98.2% (Anglesey) (Figure 2, Table 3).
5. Uptake of two doses of rotavirus vaccine in children reaching their first birthday increased slightly to 94.3% this quarter compared to 93.7% last quarter. Uptake in HBs ranged from 92.5% (Cardiff and Vale University HB) to 95.9% (Cwm Taf University HB) and ranged by LA from 91.3% (Ceredigion) to 97.6% (Merthyr Tydfil) (Figure 2, Tables 2 and 3).
6. Uptake of the first dose of MMR⁴ in children reaching their second birthday (scheduled at 12 to 13 months of age) decreased to 94.7% this quarter compared to 95.3% last quarter. Uptake ranged by health board from 92.8% (Powys THB) to 96.4% (Cwm Taf University HB) and by LA area from 92.8% (Cardiff and Powys) to 96.4% (Merthyr Tydfil and Rhondda Cynon Taf) (Figures 1, 2 and 6, Tables 2 and 4). Three HBs and 12 LA areas achieved the target of 95% uptake.
7. Uptake of the final dose of Pneumococcal Conjugate Vaccine (PCVf, scheduled at 12 to 13 months of age) in children reaching their second birthday was 95.1% this quarter compared to 95.8% last quarter. Uptake by LA ranged from 92.2% (Powys) to 96.9% (Rhondda Cynon Taf) (Figure 2, Tables 2 and 4). Four HBs and 15 LA areas achieved an uptake of 95% or over.
8. Uptake of the Hib/MenC booster (given at 12 to 13 months of age) in children reaching two years of age remained stable at 94.3% this quarter, compared to 94.9% last quarter. Uptake ranged by health board from 91.5% (Powys Teaching HB) to 96.1% (Cwm Taf University HB), and ranged by LA from 91.5% (Powys) to 96.4% (Merthyr Tydfil) (Tables 2 and 4). One health board and ten LA areas achieved uptakes in excess of 95% (Figures 1 and 2).

² DTaP/IPV/Hib vaccine protects against Diphtheria, Tetanus, Pertussis (Whooping Cough), Polio and Hib infection.

³ MenC vaccine protects against meningitis caused by meningococcus group C infection. PCV protects against pneumococcal meningitis, bacteraemia, pneumonia and otitis media. Children reaching one and two years of age this quarter have been scheduled for the two dose course of pneumococcal conjugate vaccination (PCV) at two and four months of age and a one dose MenC primary course scheduled at three months of age. Children reaching 2 years of age this quarter should have been offered a routine dose of the Hib/ MenC and PCV at 12 to 13 months of age.

⁴ MMR protects against measles, mumps and rubella infections.

9. In children reaching four years of age this quarter, uptake of the “4 in 1” DTaP/IPV⁵ pre-school booster increased to 88.7%, compared to 87.8% last quarter. Coverage of the Hib/MenC booster is currently 94.2% and uptake of two doses of MMR was 87.4% (Table 5). The proportion of children who were up to date with all these routine immunisations at four years of age increased to 85.7% this quarter, compared to 84.8% last quarter. This ranged by health board from 81.2% (Cardiff and Vale University HB) to 89.9% (Powys Teaching HB and Betsi Cadwaladr UHB) and by LA from 79.7% (Newport) to 92.2% (Ceredigion) (Figure 3, Tables 1, 2 and 5). The proportion of children who were up to date with the above immunisations by their 5th birthday remained stable at 88.8% this quarter, ranging by health board from 86.2% (Cardiff and Vale UHB) to 91.6% (Betsi Cadwaladr University HB and Cwm Taf University HB) (Table 6). There has been an improvement of 2% in the proportion up to date in these children since we reported on them, aged 4years, this time last year.
10. In children reaching five years of age this quarter, coverage of one dose of MMR is currently 96.8%. Uptake of two doses of MMR was 90.7% this quarter, compared to 90.5%, last quarter (Table 7). Uptake of two doses of MMR ranged by health board from 88.4% (Cardiff and Vale University HB) to 92.8% (Betsi Cadwaladr University HB and Cwm Taf University HB) and by LA from 85.5% (Monmouthshire) to 94.4% (Merthyr Tydfil) (Figures 1 and 2, Tables 2, 6 and 7).
11. Uptake of the “4 in 1” DTaP/IPV⁵ pre-school booster in children reaching their fifth birthday increased to 93.2% this quarter compared to 92.4% in the previous quarter, ranging by health board from 91.4% (Aneurin Bevan University HB and Hwyl Dda University HB) to 96.0% (Betsi Cadwaladr UHB) and by LA from 88.2% (Monmouthshire) to 97.6% (Flintshire) (Tables 2 and 6). Six LAs achieved the 95% uptake target (Figure 8).
12. Uptake of a two dose primary course of MenC in children reaching their fifth birthday this quarter was 92.9%, compared to 93.4%, last quarter. Uptake ranged by health board from 89.8% (Cardiff and Vale University HB) to 95.7% (Cwm Taf University HB) and by LA from 88.5% (Cardiff) to 97.1% (Torfaen) (Table 7).
13. Uptake of the first dose of HPV vaccine for girls in the 2016-17 School Year 8 group (turning 13 years of age during 01/09/16 to 31/08/17) is currently 2.3%. Coverage of the first dose in the 2016-17 School Year 9 is currently 85.2% and uptake of the second dose in this age group is currently 5.6% (Table 8). Timings of school vaccination sessions vary throughout the year and vaccination sessions for girls in the 2016-17 School Year 8 group (dose one) and 2016-17 School Year 9 (dose two) are currently underway. Uptake will increase over the next three quarters as more vaccination sessions take place. Coverage of a complete two dose course of HPV vaccine in 2016-17 school year 10 girls (girls reaching their 15th birthday during 01/09/16 to 31/08/17) is currently 84.1% (Table 8).
14. The MenACWY conjugate vaccine was introduced in September 2015 replacing the single antigen meningococcal C teenage booster that was previously given to children in School Year 9 [1]. A phased catch up campaign was also introduced for older children with those aged 16 years (School Year 11) being vaccinated in school and those aged 17 to 19 being vaccinated in general practice. Current uptake of the MenACWY vaccine in the 2016-17 School Year 9 routine cohort is 8.9% (Table 9 and Table 10). Coverage in the in the 2016-17 School Year 10 group, the first Year 9 routine cohort to be offered the new vaccine is currently 79.5% (Table 9 and Table 11). Current uptake of the MenACWY vaccine in the 2016-17 School Year 11 catch-up cohort is 6.8% (Table 9 and Table 12). Coverage in the in the 2016-17 School Year 12 group, the first catch-up cohort to be offered the new vaccine in Year 11 is currently 77.9% (Table 9).
15. Uptake of the Td/IPV⁶ teenage booster in the 2016-17 School Year 9 group (children reaching 14 years of age) was 9.3%. Uptake will increase over the next three quarters as

⁵DTaP/IPV (and dTaP/IPV) vaccines boost protection against Diphtheria, Tetanus, Pertussis and Polio infection before school entry.

⁶Td/IPV boosts protection against Diphtheria, Tetanus and Polio infection before entering adulthood.

⁷BCG protects against tuberculosis infection. Numbers of eligible children for BCG are not known.

more vaccination sessions take place. Coverage of two doses of MMR in this year group is currently 88.1% and coverage of one dose is 93.1%. Coverage of two doses of MMR vaccine ranges by health board from 79.4% (Powys Teaching HB) to 90.4% (Cwm Taf University HB). Coverage of a full course (two doses of MMR) of immunisation against rubella in 14 year old girls in this school year group is currently 88.5% (Table 10).

- 16.** Coverage of the Td/IPV teenage booster in the 2016-17 School Year 10 group (children reaching 15 years of age) is currently 82.3%. Coverage ranges by health board from 72.3% (Cardiff and Vale University HB) to 89.7% (Cwm Taf University HB). Coverage of two doses of MMR in this year group is currently 87.4% and coverage of one dose is 92.7%. Coverage of two doses of MMR vaccine ranges by health board from 82.4% (Powys THB) to 90.4% (Betsi Cadwaladr University HB). Coverage of a full course (two doses of MMR) of immunisation against rubella in 15 year old girls in this school year group is currently 88.2% (Table 11).
- 17.** Coverage of the Td/IPV teenage booster in the 2016-17 School Year 11 group (children reaching 16 years of age) is currently 83.4%. Coverage ranges by health board from 75.8% (Cardiff and Vale University HB) to 91.3% (Cwm Taf University HB). Coverage of two doses of MMR in this year group is currently 88.3% and coverage of one dose is 93.5%. Coverage of two doses of MMR vaccine ranges by health board from 83.4% (Powys THB) to 89.7% (Betsi Cadwaladr University HB). Coverage of a full course (two doses of MMR) of immunisation against rubella in 16 year old girls in this school year group is currently 89.0% (Table 12).
- 18.** Coverage of two doses of MMR in children reaching 16 years of age this quarter (between 1st October 2016 and 31st December 2016) is 88.7%, compared to 89.2% in children reaching this age during the previous quarter. Coverage of one dose of MMR is 93.6% this quarter, compared to 94.4% last quarter. Coverage of a full course (two doses of MMR) of immunisation against rubella in 16 year old girls this quarter is 89.4% this quarter compared to 89.6% last quarter. National coverage of the Td/IPV teenage booster in children reaching 16 years of age remained stable at 83.8% this quarter, compared to 83.5% last quarter (Table 2 and 13).
- 19.** Uptake of BCG⁸ immunisation is presented in Table 14. These data are based on BCG immunisations recorded in the National Community Child Health Database. BCG immunisation has been received by 6.1%, 7.1%, 7.0% and 4.1% of children reaching their first, second, fifth and 16th birthdays (respectively) during quarter four of 2016. This quarter Cardiff LA had the highest proportions of children given BCG by one year of age (13.2%) and two years of age (19.9%).
- 20.** Uptake data for hepatitis B immunisation, extracted from the Public Health Wales All Wales Neonatal Hepatitis B immunisation database, is presented in Table 15. Uptake of three doses of hepatitis B vaccine in children who were at risk of perinatal infection and reached their first birthday this quarter was 100%. Uptake of four doses of hepatitis B vaccine in children who were at risk of perinatal infection and reached their second birthday this quarter was 76.5%. Uptake of four doses of hepatitis B vaccine in children who were at risk of perinatal infection and reached their fifth birthday this quarter was 100%.

Comment

Uptake of all routine primary immunisations in babies reaching their first birthday was 95% or over again this quarter, except for rotavirus (which can't be given beyond 24 weeks of age). This is the second COVER report to include uptake figures for two doses of meningococcal serotype B vaccine in babies, which was introduced in Wales in September 2015 [2]. Uptake of two doses of Men B vaccine in babies reaching one year of age this quarter remained stable at 95% and ranged by health board area from 94% to 97%.

For the first time in 15 consecutive quarters, national uptake of one dose of MMR vaccination in two year olds fell below 95%. Follow-up of children who have missed scheduled appointments for MMR vaccination remains a key priority to prevent future outbreaks of measles and mumps in Wales.

Uptake of routine immunisations by four and five years of age have followed a generally decreasing trend for the past two years. However, the proportion of children who were up to date with their routine immunisations by four years of age increased slightly this quarter, from 85% to 86%, but is 1% lower than a year previously. Uptake of two doses of MMR vaccine remains the lowest of all vaccinations included in this composite measure. The proportion of children up to date by 5 years of age this quarter has remained stable compared to last quarter, and there has been a 2.0% increase compared to when these children were reported on one year ago with the largest increase seen in the 4 in 1 Preschool Booster (3.6%).

This report presents uptake figures for MenACWY vaccine in all School Year groups, from School Year 9 to School Year 12 (aged 14 to 17 years of age). Uptake of MenACWY vaccine in last year's routine Year 9 cohort (2016-17 School Year 10) and last year's catch-up Year 11 cohort (2016-17 School Year 12) is currently 80% and 78% respectively. Vaccination sessions for 2016-17 School Year 9 and 11 groups have begun and uptake will increase over the next three quarters. Where possible individuals should be vaccinated before they reach school-leaving age, when catch-up becomes more challenging. Uptake of the MenACWY vaccine in age groups vaccinated in General Practice (now aged 18, 19 and 20 years of age), remains low at 22%, 34% and 38% respectively as at 13/02/2017[3]. There is also low uptake in age groups vaccinated through General Practice in England [4].

In all secondary school year groups reported on, coverage of one dose of MMR vaccine remains under 95% and coverage of two doses of MMR vaccine remains under 90%. Over the 2016-17 academic year the MenACWY catch-up campaign for 16 year olds may act as an additional opportunity for an immunisation status check before children leave school.

Changes to the COVER report

Since 2016 Quarter 2 (COVER 119) coverage figures by school year has been included for the older age groups. This is intended to give a clearer picture of the proportion of children protected against vaccine preventable disease at any given quarter and the progress of school based vaccine programmes throughout the academic year. At the time data for this report were extracted, vaccination sessions for the 2016-17 school year would have begun but will not be complete. Uptake figures for school based vaccinations will increase over the next three quarters. All vaccinations in Cardiff and Vale (apart from the HPV vaccine and the MenACWY catch-up campaign in 16 year olds) are given through General Practice and children are invited for vaccinations throughout the year when they turn the appropriate age.

References

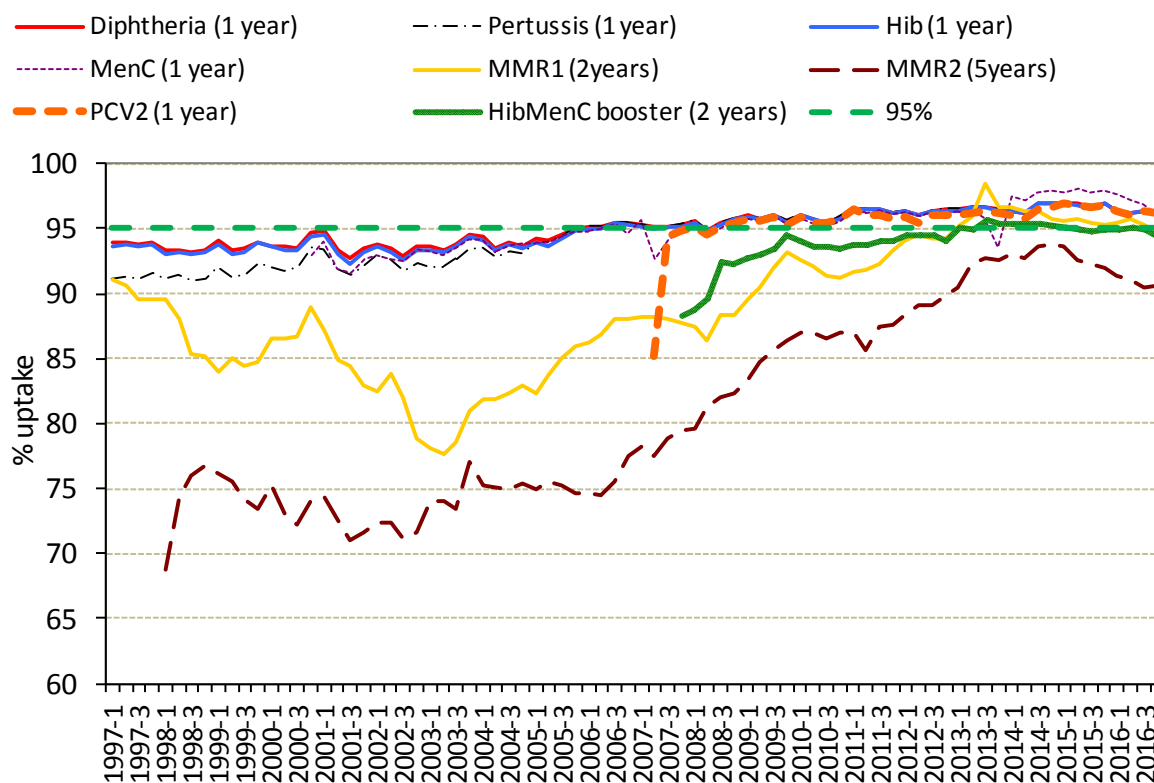
- [1] Welsh Government (2015) Meningococcal ACWY conjugate vaccination (MenACWY) - Revision, Welsh Health Circular. WHC(2015)037. <http://gov.wales/docs/dhss/publications/150724whc037en.pdf>
- [2] Welsh Government (2015) Introduction of MenB Immunisation for Infants, Welsh Health Circular. WHC(2015)040. <http://gov.wales/docs/dhss/publications/150727whc040en.pdf>
- [3] Public Health Wales (2016). MenACWY catch-up immunisation uptake data (collected through Audit+). Public Health Wales Vaccine Preventable Disease Programme and Communicable Disease Surveillance Centre. <http://www.wales.nhs.uk/sitesplus/888/page/88528>
- [4] Public Health England. MenACWY vaccine coverage estimates, report: to end of October 2016. 2016; Available from: <https://www.gov.uk/government/publications/meningococcal-acwy-immunisation-programme-vaccine-coverage-estimates>

Report prepared by Public Health Wales Vaccine Preventable Disease Programme and Communicable Disease Surveillance Centre.

Data for this report was provided by NHS Wales Informatics Service from the National Community Child Health Database (NCCHD). The data was sourced from Community Child Health databases maintained by local Child Health Office staff in Trusts throughout Wales based on regular returns from doctors and nurses who immunise or advise on immunisation. Uptake data presented throughout are for HB resident population, not for HB GP practice populations. The maps, graphs, tables 1 and 2 are best viewed in colour.

Suggested citation for this report: Public Health Wales Health Protection Division. Vaccine uptake in Children in Wales, October to December 2016: COVER report 121, January 2017. Cardiff, Public Health Wales.
For further information on this report please contact: surveillance.requests@wales.nhs.uk

Figure 1. Percentage uptake of childhood immunisations in Wales, quarter 1 1997 to quarter 4 2016*. Data are for children reaching 1 year of age each quarter for diphtheria, pertussis, Hib, MenC⁹ and pneumococcal conjugate vaccine (PCV2), children reaching 2 years of age for MMR1 (first dose) and the Hib/MenC booster, and 5 years of age for MMR2 (second dose).



* Uptake data for quarter 3 2014 to quarter 4 2014 presented here are based on estimates calculated in August 2015, rather than published data, due to data quality problems affecting reported uptake of some immunisations in reports published during this period.

Figure 2. Summary of uptake rates for selected immunisations⁹ in resident children reaching their 1st, 2nd, 5th and 16th birthday between 01/10/16 and 31/12/16 and resident on 31/12/16.

All Wales Summary - COVER121

5 in 1 primary by age 1y (3 doses)	<div style="width: 96.2%; background-color: #28a745; height: 10px;"></div>	96.2%
MenC primary by age 1y (1 dose)	<div style="width: 96.2%; background-color: #28a745; height: 10px;"></div>	96.2%
MenB by age 1y (2 doses)	<div style="width: 95.4%; background-color: #28a745; height: 10px;"></div>	95.4%
Rotavirus primary by age 1yr (2 doses)	<div style="width: 94.3%; background-color: #ffc107; height: 10px;"></div>	94.3%
PCV primary by age 1y (2 doses)	<div style="width: 96.2%; background-color: #28a745; height: 10px;"></div>	96.2%
MMR by age 2y (1st dose)	<div style="width: 94.7%; background-color: #ffc107; height: 10px;"></div>	94.7%
PCV by age 2y (final (3rd) dose)	<div style="width: 95.1%; background-color: #28a745; height: 10px;"></div>	95.1%
Hib/MenC booster by age 2y	<div style="width: 94.3%; background-color: #ffc107; height: 10px;"></div>	94.3%
MMR by age 5y (2nd dose)	<div style="width: 90.7%; background-color: #ffc107; height: 10px;"></div>	90.7%
4 in 1 pre-school booster by age 5y	<div style="width: 93.2%; background-color: #ffc107; height: 10px;"></div>	93.2%
MMR coverage (1 dose) by age 16y	<div style="width: 93.6%; background-color: #ffc107; height: 10px;"></div>	93.6%
MMR coverage (2 doses) by age 16y	<div style="width: 88.7%; background-color: #dc3545; height: 10px;"></div>	88.7%
3 in 1 Teenage booster by age 16y	<div style="width: 83.8%; background-color: #dc3545; height: 10px;"></div>	83.8%

⁹ MenC uptake for children reaching one year of age is based on a completed one dose course of MenC vaccination.

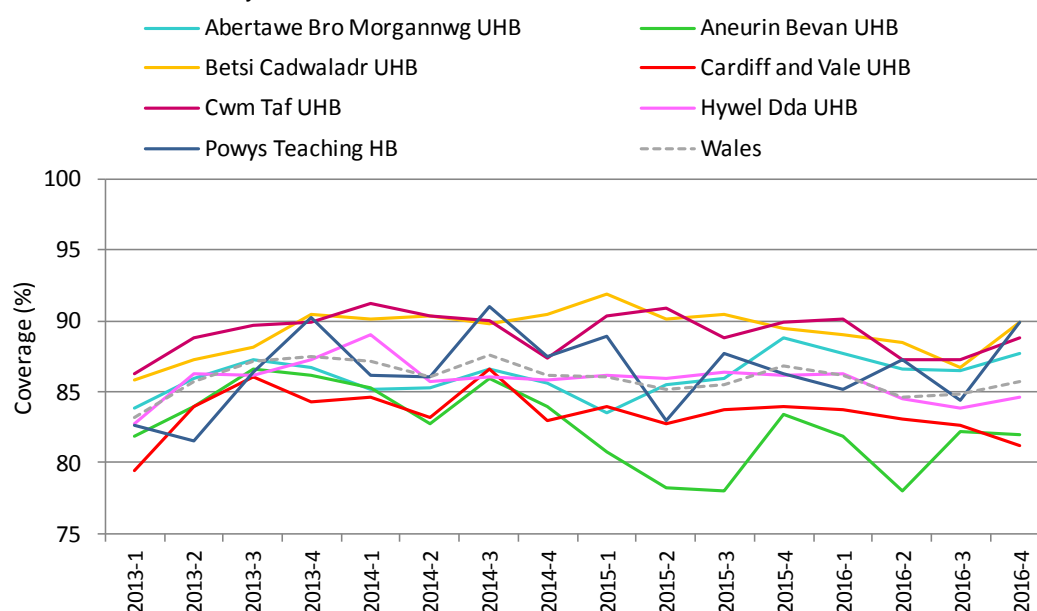
Figure 3. Percentage uptake of resident children reaching their 4th birthday between 01/10/16 and 31/12/16 and are up to date with all scheduled vaccines¹⁰ by Health Board.



Table 1. Percentages of resident children reaching their 4th birthday during quarter 4 2015 to quarter 4 2016* who are up to date with all scheduled vaccines¹⁰, by Health Board.

Area	Up to date in schedule				
	2015-4	2016-1	2016-2	2016-3	2016-4
Abertawe Bro Morgannwg UHB	88.8	87.7	86.6	86.4	87.7
Aneurin Bevan UHB	83.4	81.9	78.0	82.2	81.9
Betsi Cadwaladr UHB	89.5	89.1	88.5	86.7	89.9
Cardiff and Vale UHB	84.0	83.7	83.0	82.7	81.2
Cwm Taf UHB	89.9	90.1	87.3	87.3	88.8
Hywel Dda UHB	86.2	86.3	84.5	83.8	84.6
Powys Teaching HB	86.3	85.1	87.3	84.4	89.9
Wales	86.8	86.2	84.6	84.8	85.7

Figure 4. Trends in the percentages of children reaching their 4th birthday who are up to date with all scheduled vaccines¹⁰, by Health Board*.



* Uptake data for quarter 3 2014 to quarter 4 2014 presented here are based on estimates calculated in August 2015, rather than published data, due to data quality problems affecting reported uptake of some immunisations in reports published during this period.

¹⁰ Completed “4 in 1” preschool booster, the Hib/MenC booster and second MMR dose by four years of age. The calculation method for proportions of children up to date with routine immunisation by four years of age was revised during 2014 quarter 1, to remove the pneumococcal conjugate vaccine booster dose, as this is not clinically indicated after two years of age.

Figure 5. Uptake of “5 in 1” vaccine in Welsh Local Authority areas in children reaching their 1st birthday between 01/10/16 and 31/12/16.

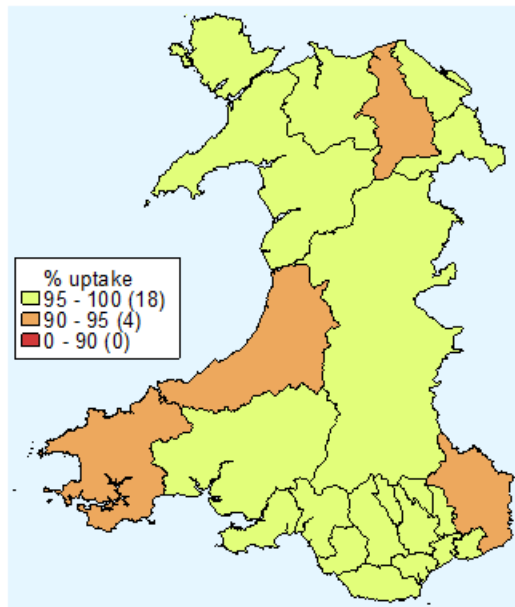


Figure 6. Uptake of at least 1 dose of MMR immunisation in Welsh Local Authority areas in children reaching their 2nd birthday between 01/10/16 and 31/12/16.

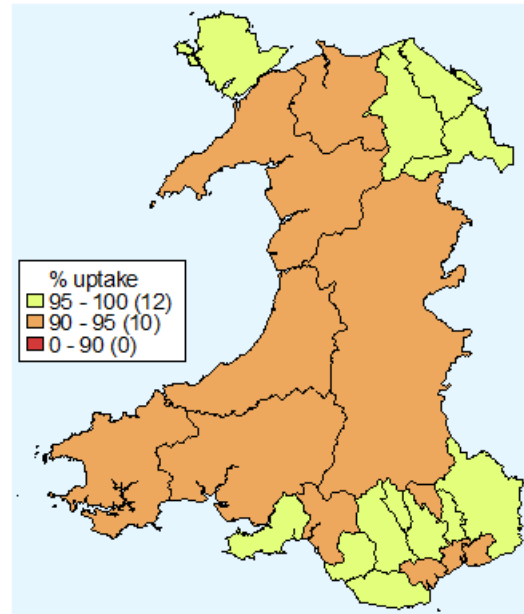


Figure 7. Uptake of two doses of MMR vaccine in Welsh Local Authority areas in children reaching their 5th birthday between 01/10/16 and 31/12/16.

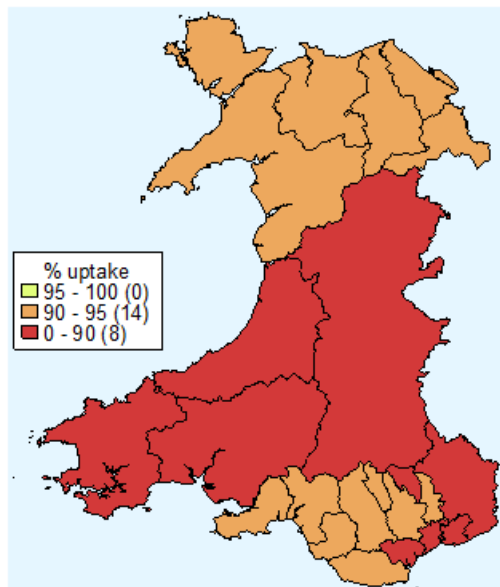


Figure 8. Uptake of “4 in 1” vaccine in Welsh Local Authority areas in children reaching their 5th birthday between 01/10/16 and 31/12/16.

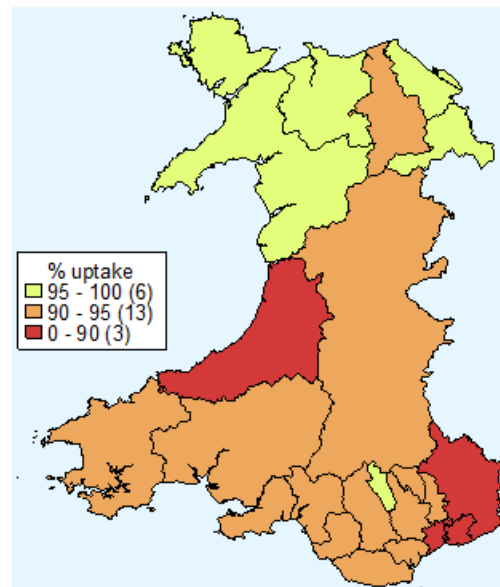


Table 2. Summary table with uptake of selected immunisations in resident children reaching their 1st, 2nd, 5th and 16th birthday between 01/10/16 and 31/12/16 and resident on 31/12/16.

Area	Age 1 year				Age 2 years				Age 4 years			Age 5 years			Age 16 years			
	Resident children (n)	5 in 1 ¹ (n) (%)	MenC ² (n) (%)	Rotavirus (n) (%)	Resident children (n)	MMR1 (n) (%)	PCV ³ (n) (%)	Hib/MenC (n) (%)	Resident Children (n)	Up to date in schedule ⁴ (n) (%)	Resident children (n)	MMR2 (n) (%)	4 in 1 ¹ (n) (%)	Resident children (n)	MMR1 (n) (%)	MMR2 (n) (%)	3 in 1 Teenage booster ⁵ (n) (%)	
Abertawe Bro Morgannwg UHB																		
Bridgend LA	381	369 96.9	369 96.9	364 95.5	419	400 95.5	403 96.2	398 95.0	434	388 89.4	484	454 93.8	451 93.2	453	440 97.1	419 92.5	409 90.3	
Neath Port Talbot LA	376	364 96.8	364 96.8	364 96.8	405	384 94.8	386 95.3	384 94.8	399	345 86.5	442	408 92.3	417 94.3	412	389 94.4	347 84.2	365 88.6	
Swansea LA	630	605 96.0	600 95.2	594 94.3	660	629 95.3	630 95.5	626 94.8	662	578 87.3	702	636 90.6	655 93.3	606	547 90.3	508 83.8	529 87.3	
Health Board Total	1387	1338 96.5	1333 96.1	1322 95.3	1484	1413 95.2	1419 95.6	1408 94.9	1495	1311 87.7	1628	1498 92.0	1523 93.6	1471	1376 93.5	1274 86.6	1303 88.6	
Aneurin Bevan UHB																		
Blaenau Gwent LA	178	173 97.2	174 97.8	165 92.7	178	168 94.4	169 94.9	168 94.4	215	177 82.3	200	179 89.5	183 91.5	188	182 96.8	176 93.6	163 86.7	
Caerphilly LA	539	527 97.8	527 97.8	519 96.3	556	532 95.7	531 95.5	532 95.7	588	492 83.7	556	522 93.9	525 94.4	496	483 97.4	467 94.2	418 84.3	
Monmouthshire LA	189	179 94.7	179 94.7	175 92.6	221	212 95.9	212 95.9	210 95.0	209	173 82.8	221	189 85.5	195 88.2	273	238 87.2	222 81.3	210 76.9	
Newport LA	530	507 95.7	507 95.7	490 92.5	512	479 93.6	479 93.6	472 92.2	483	385 79.7	551	478 86.8	492 89.3	457	427 93.4	401 87.7	367 80.3	
Torfaen LA	264	258 97.7	258 97.7	253 95.8	236	225 95.3	226 95.8	223 94.5	299	243 81.3	274	247 90.1	252 92.0	255	243 95.3	232 91.0	219 85.9	
Health Board Total	1700	1644 96.7	1645 96.8	1602 94.2	1703	1616 94.9	1617 95.0	1605 94.2	1794	1470 81.9	1802	1615 89.6	1647 91.4	1669	1573 94.2	1498 89.8	1377 82.5	
Betsi Cadwaladr UHB																		
Anglesey LA	170	168 98.8	168 98.8	163 95.9	182	173 95.1	174 95.6	175 96.2	205	187 91.2	192	181 94.3	187 97.4	177	171 96.6	166 93.8	146 82.5	
Conwy LA	307	297 96.7	298 97.1	290 94.5	264	250 94.7	251 95.1	247 93.6	290	258 89.0	290	269 92.8	276 95.2	318	294 92.5	278 87.4	259 81.4	
Denbighshire LA	242	228 94.2	225 93.0	226 93.4	254	242 95.3	242 95.3	237 93.3	284	248 87.3	287	262 91.3	270 94.1	291	265 91.1	260 89.3	234 80.4	
Flintshire LA	387	378 97.7	376 97.2	371 95.9	404	389 96.3	391 96.8	387 95.8	396	357 90.2	449	418 93.1	438 97.6	375	353 94.1	342 91.2	309 82.4	
Gwynedd LA	306	296 96.7	283 92.5	292 95.4	288	271 94.1	272 94.4	268 93.1	308	278 90.3	337	314 93.2	321 95.3	319	310 97.2	300 94.0	277 86.8	
Wrexham LA	367	352 95.9	354 96.5	343 93.5	387	371 95.9	374 96.6	369 95.3	442	402 91.0	411	381 92.7	395 96.1	369	351 95.1	334 90.5	311 84.3	
Health Board Total	1779	1719 96.6	1704 95.8	1685 94.7	1779	1696 95.3	1704 95.8	1683 94.6	1925	1730 89.9	1966	1825 92.8	1887 96.0	1849	1744 94.3	1680 90.9	1536 83.1	
Cardiff and Vale UHB																		
Cardiff LA	1118	1062 95.0	1065 95.3	1033 92.4	1144	1062 92.8	1068 93.4	1056 92.3	1172	941 80.3	1204	1056 87.7	1097 91.1	922	847 91.9	788 85.5	701 76.0	
Vale of Glamorgan LA	366	348 95.1	354 96.7	340 92.9	352	337 95.7	338 96.0	338 96.0	380	319 83.9	420	380 90.5	398 94.8	360	328 91.1	302 83.9	292 81.1	
Health Board Total	1484	1410 95.0	1419 95.6	1373 92.5	1496	1399 93.5	1406 94.0	1394 93.2	1552	1260 81.2	1624	1436 88.4	1495 92.1	1282	1175 91.7	1090 85.0	993 77.5	
Cwm Taf UHB																		
Merthyr Tydfil LA	169	166 98.2	167 98.8	165 97.6	197	190 96.4	190 96.4	190 96.4	202	181 89.6	214	202 94.4	205 95.8	147	142 96.6	137 93.2	133 90.5	
Rhondda Cynon Taf LA	644	628 97.5	630 97.8	615 95.5	667	643 96.4	646 96.9	640 96.0	679	601 88.5	770	711 92.3	725 94.2	653	625 95.7	601 92.0	605 92.6	
Health Board Total	813	794 97.7	797 98.0	780 95.9	864	833 96.4	836 96.8	830 96.1	881	782 88.8	984	913 92.8	930 94.5	800	767 95.9	738 92.3	738 92.3	
Hywel Dda UHB																		
Cardiff LA	466	444 95.3	442 94.8	441 94.6	455	426 93.6	427 93.8	426 93.6	531	436 82.1	522	469 89.8	481 92.1	502	474 94.4	462 92.0	450 89.6	
Ceredigion LA	138	131 94.9	133 96.4	126 91.3	154	145 94.2	146 94.8	144 93.5	166	153 92.2	158	138 87.3	142 89.9	167	155 92.8	147 88.0	140 83.8	
Pembrokeshire LA	283	266 94.0	269 95.1	264 93.3	297	279 93.9	284 95.6	283 95.3	331	281 84.9	336	293 87.2	306 91.1	297	270 90.9	259 87.2	216 72.7	
Health Board Total	887	841 94.8	844 95.2	831 93.7	906	850 93.8	857 94.6	853 94.2	1028	870 84.6	1016	900 88.6	929 91.4	966	899 93.1	868 89.9	806 83.4	
Powys Teaching UHB																		
Cardiff LA	253	242 95.7	243 96.0	238 94.1	306	284 92.8	282 92.2	280 91.5	296	266 89.9	327	290 88.7	302 92.4	349	317 90.8	296 84.8	277 79.4	
Unknown	1	1 100.0	1 100.0	0 0.0	8	6 75.0	6 75.0	6 75.0	22	20 90.9	18	14 77.8	14 77.8	50	44 88.0	42 84.0	38 76.0	
Wales Total	8304	7989 96.2	7986 96.2	7831 94.3	8546	8097 94.7	8127 95.1	8059 94.3	8993	7709 85.7	9365	8491 90.7	8727 93.2	8436	7895 93.6	7486 88.7	7068 83.8	

¹ Uptake of pertussis used as proxy

² Uptake of a completed one dose primary course of MenC vaccination

³ Children receiving the final dose of PCV

⁴ Completed "4 in 1" preschool booster, the Hib/ MenC booster and second MMR dose by four years of age

⁵ Uptake of diphtheria (reinforcing booster dose) used as proxy

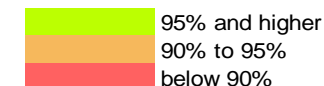


Table 3. Vaccine uptake in children reaching their 1st birthday between 01/10/16 and 31/12/16 and resident on 31/12/16.

Area	Resident children	D3	T3	P3	Po3	Hib3	MMR1	MenC ¹	Rotavirus	PCV2 ²	Men B ³	HibMenC
	(n)	(n) (%)	(n) (%)	(n) (%)	(n) (%)	(n) (%)	(n) (%)	(n) (%)	(n) (%)	(n) (%)	(n) (%)	(n) (%)
Abertawe Bro Morgannwg University HB												
Bridgend LA	381	369 96.9	369 96.9	369 96.9	368 96.6	369 96.9	0 0.0	369 96.9	364 95.5	370 97.1	367 96.3	0 0.0
Neath Port Talbot LA	376	364 96.8	364 96.8	364 96.8	364 96.8	364 96.8	1 0.3	364 96.8	364 96.8	364 96.8	363 96.5	0 0.0
Swansea LA	630	605 96.0	605 96.0	605 96.0	605 96.0	605 96.0	0 0.0	600 95.2	594 94.3	604 95.9	601 95.4	1 0.2
Health Board Total	1387	1338 96.5	1338 96.5	1338 96.5	1337 96.4	1338 96.5	1 0.1	1333 96.1	1322 95.3	1338 96.5	1331 96.0	1 0.1
Aneurin Bevan University HB												
Blaenau Gwent LA	178	173 97.2	173 97.2	173 97.2	173 97.2	173 97.2	0 0.0	174 97.8	165 92.7	174 97.8	174 97.8	0 0.0
Caerphilly LA	539	527 97.8	527 97.8	527 97.8	527 97.8	527 97.8	2 0.4	527 97.8	519 96.3	528 98.0	525 97.4	2 0.4
Monmouthshire LA	189	179 94.7	179 94.7	179 94.7	179 94.7	179 94.7	1 0.5	179 94.7	175 92.6	179 94.7	177 93.7	1 0.5
Newport LA	530	507 95.7	507 95.7	507 95.7	507 95.7	507 95.7	2 0.4	507 95.7	490 92.5	510 96.2	495 93.4	2 0.4
Torfaen LA	264	258 97.7	258 97.7	258 97.7	258 97.7	258 97.7	0 0.0	258 97.7	253 95.8	259 98.1	256 97.0	0 0.0
Health Board Total	1700	1644 96.7	1644 96.7	1644 96.7	1644 96.7	1644 96.7	5 0.3	1645 96.8	1602 94.2	1650 97.1	1627 95.7	5 0.3
Betsi Cadwaladr University HB												
Anglesey LA	170	168 98.8	168 98.8	168 98.8	168 98.8	168 98.8	1 0.6	168 98.8	163 95.9	166 97.6	167 98.2	1 0.6
Conwy LA	307	297 96.7	297 96.7	297 96.7	296 96.4	297 96.7	2 0.7	298 97.1	290 94.5	298 97.1	299 97.4	2 0.7
Denbighshire LA	242	228 94.2	228 94.2	228 94.2	228 94.2	228 94.2	1 0.4	225 93.0	226 93.4	227 93.8	224 92.6	1 0.4
Flintshire LA	387	378 97.7	378 97.7	378 97.7	378 97.7	378 97.7	2 0.5	376 97.2	371 95.9	378 97.7	375 96.9	2 0.5
Gwynedd LA	306	296 96.7	296 96.7	296 96.7	296 96.7	296 96.7	2 0.7	283 92.5	292 95.4	298 97.4	295 96.4	2 0.7
Wrexham LA	367	352 95.9	352 95.9	352 95.9	352 95.9	352 95.9	2 0.5	354 96.5	343 93.5	353 96.2	346 94.3	1 0.3
Health Board Total	1779	1719 96.6	1719 96.6	1719 96.6	1718 96.6	1719 96.6	10 0.6	1704 95.8	1685 94.7	1720 96.7	1706 95.9	9 0.5
Cardiff and Vale University HB												
Cardiff LA	1118	1062 95.0	1062 95.0	1062 95.0	1062 95.0	1062 95.0	5 0.4	1065 95.3	1033 92.4	1060 94.8	1045 93.5	2 0.2
Vale of Glamorgan LA	366	348 95.1	348 95.1	348 95.1	348 95.1	348 95.1	2 0.5	354 96.7	340 92.9	345 94.3	343 93.7	1 0.3
Health Board Total	1484	1410 95.0	1410 95.0	1410 95.0	1410 95.0	1410 95.0	7 0.5	1419 95.6	1373 92.5	1405 94.7	1388 93.5	3 0.2
Cwm Taf University HB												
Merthyr Tydfil LA	169	166 98.2	166 98.2	166 98.2	166 98.2	166 98.2	1 0.6	167 98.8	165 97.6	166 98.2	165 97.6	1 0.6
Rhondda Cynon Taf LA	644	628 97.5	628 97.5	628 97.5	628 97.5	628 97.5	1 0.2	630 97.8	615 95.5	628 97.5	625 97.0	1 0.2
Health Board Total	813	794 97.7	794 97.7	794 97.7	794 97.7	794 97.7	2 0.2	797 98.0	780 95.9	794 97.7	790 97.2	2 0.2
Hywel Dda University HB												
Carmarthenshire LA	466	444 95.3	444 95.3	444 95.3	444 95.3	444 95.3	1 0.2	442 94.8	441 94.6	444 95.3	443 95.1	1 0.2
Ceredigion LA	138	131 94.9	131 94.9	131 94.9	131 94.9	131 94.9	0 0.0	133 96.4	126 91.3	131 94.9	132 95.7	0 0.0
Pembrokeshire LA	283	266 94.0	266 94.0	266 94.0	266 94.0	266 94.0	1 0.4	269 95.1	264 93.3	266 94.0	265 93.6	1 0.4
Health Board Total	887	841 94.8	841 94.8	841 94.8	841 94.8	841 94.8	2 0.2	844 95.2	831 93.7	841 94.8	840 94.7	2 0.2
Powys Teaching HB	253	242 95.7	242 95.7	242 95.7	242 95.7	242 95.7	1 0.4	243 96.0	238 94.1	242 95.7	238 94.1	1 0.4
Unknown	1	1 100.0	1 100.0	1 100.0	1 100.0	1 100.0	0 0.0	1 100.0	0 0.0	1 100.0	1 100.0	0 0.0
Wales Total	8304	7989 96.2	7989 96.2	7989 96.2	7987 96.2	7989 96.2	28 0.3	7986 96.2	7831 94.3	7991 96.2	7921 95.4	23 0.3

¹ Uptake of a completed one dose primary course of MenC vaccination.

² Full primary two dose course of pneumococcal conjugate vaccine.

³ Uptake of two doses of meningococcal serogroup B (MenB) vaccine, scheduled at two and four months of age.

Table 4. Vaccine uptake in children reaching their 2nd birthday between 01/10/16 and 31/12/16 and resident on 31/12/16.

Area	Resident children	D3		T3		P3		Po3		Hib3		MMR1		MenC ¹		PCV2 ²		PCVf ³		HibMenC	
	(n)	(n)	(%)	(n)	(%)	(n)	(%)	(n)	(%)	(n)	(%)	(n)	(%)	(n)	(%)	(n)	(%)	(n)	(%)	(n)	(%)
<u>Abertawe Bro Morgannwg University HB</u>																					
Bridgend LA	419	408	97.4	408	97.4	408	97.4	408	97.4	408	97.4	400	95.5	410	97.9	405	96.7	403	96.2	398	95.0
Neath Port Talbot LA	405	400	98.8	400	98.8	400	98.8	400	98.8	400	98.8	384	94.8	401	99.0	394	97.3	386	95.3	384	94.8
Swansea LA	660	645	97.7	645	97.7	645	97.7	645	97.7	644	97.6	629	95.3	638	96.7	639	96.8	630	95.5	626	94.8
Health Board Total	1484	1453	97.9	1453	97.9	1453	97.9	1453	97.9	1452	97.8	1413	95.2	1449	97.6	1438	96.9	1419	95.6	1408	94.9
<u>Aneurin Bevan University HB</u>																					
Blaenau Gwent LA	178	174	97.8	174	97.8	174	97.8	174	97.8	174	97.8	168	94.4	175	98.3	173	97.2	169	94.9	168	94.4
Caerphilly LA	556	545	98.0	545	98.0	545	98.0	545	98.0	545	98.0	532	95.7	545	98.0	545	98.0	531	95.5	532	95.7
Monmouthshire LA	221	212	95.9	212	95.9	212	95.9	212	95.9	212	95.9	212	95.9	210	95.0	210	95.0	212	95.9	210	95.0
Newport LA	512	500	97.7	500	97.7	500	97.7	500	97.7	497	97.1	479	93.6	494	96.5	488	95.3	479	93.6	472	92.2
Torfaen LA	236	234	99.2	234	99.2	234	99.2	234	99.2	234	99.2	225	95.3	236	100.0	231	97.9	226	95.8	223	94.5
Health Board Total	1703	1665	97.8	1665	97.8	1665	97.8	1665	97.8	1662	97.6	1616	94.9	1660	97.5	1647	96.7	1617	95.0	1605	94.2
<u>Betsi Cadwaladr University HB</u>																					
Anglesey LA	182	176	96.7	176	96.7	176	96.7	176	96.7	176	96.7	173	95.1	175	96.2	176	96.7	174	95.6	175	96.2
Conwy LA	264	255	96.6	255	96.6	255	96.6	255	96.6	255	96.6	250	94.7	258	97.7	251	95.1	251	95.1	247	93.6
Denbighshire LA	254	249	98.0	249	98.0	249	98.0	249	98.0	249	98.0	242	95.3	248	97.6	240	94.5	242	95.3	237	93.3
Flintshire LA	404	396	98.0	396	98.0	396	98.0	396	98.0	396	98.0	389	96.3	392	97.0	391	96.8	391	96.8	387	95.8
Gwynedd LA	288	280	97.2	280	97.2	280	97.2	280	97.2	280	97.2	271	94.1	274	95.1	274	95.1	272	94.4	268	93.1
Wrexham LA	387	379	97.9	379	97.9	379	97.9	378	97.7	378	97.7	371	95.9	379	97.9	374	96.6	374	96.6	369	95.3
Health Board Total	1779	1735	97.5	1735	97.5	1735	97.5	1734	97.5	1734	97.5	1696	95.3	1726	97.0	1706	95.9	1704	95.8	1683	94.6
<u>Cardiff and Vale University HB</u>																					
Cardiff LA	1144	1104	96.5	1104	96.5	1103	96.4	1103	96.4	1103	96.4	1062	92.8	1094	95.6	1085	94.8	1068	93.4	1056	92.3
Vale of Glamorgan LA	352	344	97.7	344	97.7	344	97.7	344	97.7	344	97.7	337	95.7	347	98.6	343	97.4	338	96.0	338	96.0
Health Board Total	1496	1448	96.8	1448	96.8	1447	96.7	1447	96.7	1447	96.7	1399	93.5	1441	96.3	1428	95.5	1406	94.0	1394	93.2
<u>Cwm Taf University HB</u>																					
Merthyr Tydfil LA	197	197	100.0	197	100.0	197	100.0	197	100.0	197	100.0	190	96.4	196	99.5	196	99.5	190	96.4	190	96.4
Rhondda Cynon Taf LA	667	659	98.8	659	98.8	659	98.8	659	98.8	659	98.8	643	96.4	654	98.1	653	97.9	646	96.9	640	96.0
Health Board Total	864	856	99.1	856	99.1	856	99.1	856	99.1	856	99.1	833	96.4	850	98.4	849	98.3	836	96.8	830	96.1
<u>Hywel Dda University HB</u>																					
Cardiff LA	455	442	97.1	442	97.1	442	97.1	442	97.1	442	97.1	426	93.6	444	97.6	437	96.0	427	93.8	426	93.6
Ceredigion LA	154	148	96.1	148	96.1	148	96.1	148	96.1	148	96.1	145	94.2	146	94.8	146	94.8	146	94.8	144	93.5
Pembrokeshire LA	297	294	99.0	294	99.0	294	99.0	294	99.0	294	99.0	279	93.9	290	97.6	289	97.3	284	95.6	283	95.3
Health Board Total	906	884	97.6	884	97.6	884	97.6	884	97.6	884	97.6	850	93.8	880	97.1	872	96.2	857	94.6	853	94.2
<u>Powys Teaching HB</u>																					
Unknown	8	6	75.0	6	75.0	6	75.0	6	75.0	6	75.0	6	75.0	6	75.0	6	75.0	6	75.0	6	75.0
Wales Total	8546	8336	97.5	8336	97.5	8335	97.5	8334	97.5	8330	97.5	8097	94.7	8301	97.1	8234	96.3	8127	95.1	8059	94.3

¹ Uptake of a completed one dose primary course of MenC vaccination.

² Full primary two dose course of pneumococcal conjugate vaccine.

³ Final (booster) dose of pneumococcal conjugate vaccine.

Table 5. Vaccine uptake in children reaching their 4th birthday between 01/10/16 and 31/12/16 and resident on 31/12/16. The proportion of children who have received all of these vaccines by their 4th birthday is also presented.

Area	Resident children (n)	4 in 1 Preschool Booster ¹		HibMenC		MMR dose 2		Up to date in schedule ²	
		(n)	(%)	(n)	(%)	(n)	(%)	(n)	(%)
<u>Abertawe Bro Morgannwg University HB</u>									
Bridgend LA	434	399	91.9	417	96.1	400	92.2	388	89.4
Neath Port Talbot LA	399	351	88.0	380	95.2	360	90.2	345	86.5
Swansea LA	662	595	89.9	628	94.9	593	89.6	578	87.3
Health Board Total	1495	1345	90.0	1425	95.3	1353	90.5	1311	87.7
<u>Aneurin Bevan University HB</u>									
Blaenau Gwent LA	215	180	83.7	203	94.4	179	83.3	177	82.3
Caerphilly LA	588	504	85.7	567	96.4	497	84.5	492	83.7
Monmouthshire LA	209	183	87.6	190	90.9	175	83.7	173	82.8
Newport LA	483	407	84.3	435	90.1	396	82.0	385	79.7
Torfaen LA	299	248	82.9	282	94.3	246	82.3	243	81.3
Health Board Total	1794	1522	84.8	1677	93.5	1493	83.2	1470	81.9
<u>Betsi Cadwaladr University HB</u>									
Anglesey LA	205	190	92.7	200	97.6	188	91.7	187	91.2
Conwy LA	290	268	92.4	277	95.5	259	89.3	258	89.0
Denbighshire LA	284	257	90.5	267	94.0	251	88.4	248	87.3
Flintshire LA	396	369	93.2	371	93.7	359	90.7	357	90.2
Gwynedd LA	308	284	92.2	295	95.8	280	90.9	278	90.3
Wrexham LA	442	412	93.2	424	95.9	406	91.9	402	91.0
Health Board Total	1925	1780	92.5	1834	95.3	1743	90.5	1730	89.9
<u>Cardiff and Vale University HB</u>									
Cardiff LA	1172	1004	85.7	1073	91.6	976	83.3	941	80.3
Vale of Glamorgan LA	380	332	87.4	357	93.9	327	86.1	319	83.9
Health Board Total	1552	1336	86.1	1430	92.1	1303	84.0	1260	81.2
<u>Cwm Taf University HB</u>									
Merthyr Tydfil LA	202	186	92.1	195	96.5	182	90.1	181	89.6
Rhondda Cynon Taf LA	679	617	90.9	651	95.9	609	89.7	601	88.5
Health Board Total	881	803	91.1	846	96.0	791	89.8	782	88.8
<u>Hywel Dda University HB</u>									
Carmarthenshire LA	531	451	84.9	489	92.1	449	84.6	436	82.1
Ceredigion LA	166	158	95.2	160	96.4	153	92.2	153	92.2
Pembrokeshire LA	331	291	87.9	304	91.8	285	86.1	281	84.9
Health Board Total	1028	900	87.5	953	92.7	887	86.3	870	84.6
<u>Powys Teaching HB</u>	296	273	92.2	287	97.0	268	90.5	266	89.9
Unknown	22	20	90.9	22	100.0	21	95.5	20	90.9
Wales Total	8993	7979	88.7	8474	94.2	7859	87.4	7709	85.7

¹ Uptake of acellular pertussis used as proxy

² Completed "4 in 1" preschool booster, the Hib/ MenC booster and second MMR dose by four years of age.

Table 6. Vaccine uptake in children reaching their 5th birthday between 01/10/16 and 31/12/16 and resident on 31/12/16. The proportion of children who have received all of these vaccines by their 5th birthday is also presented.

Area	Resident children (n)	4 in 1 Preschool Booster ¹		HibMenCb		MMR dose 2		Up to date in schedule ²	
		(n)	(%)	(n)	(%)	(n)	(%)	(n)	(%)
<u>Abertawe Bro Morgannwg University HB</u>									
Bridgend LA	484	451	93.2	460	95.0	454	93.8	443	91.5
Neath Port Talbot LA	442	417	94.3	422	95.5	408	92.3	398	90.0
Swansea LA	702	655	93.3	657	93.6	636	90.6	629	89.6
Health Board Total	1628	1523	93.6	1539	94.5	1498	92.0	1470	90.3
<u>Aneurin Bevan University HB</u>									
Blaenau Gwent LA	200	183	91.5	193	96.5	179	89.5	178	89.0
Caerphilly LA	556	525	94.4	525	94.4	522	93.9	503	90.5
Monmouthshire LA	221	195	88.2	198	89.6	189	85.5	187	84.6
Newport LA	551	492	89.3	495	89.8	478	86.8	459	83.3
Torfaen LA	274	252	92.0	262	95.6	247	90.1	242	88.3
Health Board Total	1802	1647	91.4	1673	92.8	1615	89.6	1569	87.1
<u>Betsi Cadwaladr University HB</u>									
Anglesey LA	192	187	97.4	181	94.3	181	94.3	178	92.7
Conwy LA	290	276	95.2	276	95.2	269	92.8	267	92.1
Denbighshire LA	287	270	94.1	264	92.0	262	91.3	255	88.9
Flintshire LA	449	438	97.6	422	94.0	418	93.1	414	92.2
Gwynedd LA	337	321	95.3	319	94.7	314	93.2	309	91.7
Wrexham LA	411	395	96.1	390	94.9	381	92.7	378	92.0
Health Board Total	1966	1887	96.0	1852	94.2	1825	92.8	1801	91.6
<u>Cardiff and Vale University HB</u>									
Cardiff LA	1204	1097	91.1	1082	89.9	1056	87.7	1023	85.0
Vale of Glamorgan LA	420	398	94.8	396	94.3	380	90.5	377	89.8
Health Board Total	1624	1495	92.1	1478	91.0	1436	88.4	1400	86.2
<u>Cwm Taf University HB</u>									
Merthyr Tydfil LA	214	205	95.8	206	96.3	202	94.4	199	93.0
Rhondda Cynon Taf LA	770	725	94.2	732	95.1	711	92.3	702	91.2
Health Board Total	984	930	94.5	938	95.3	913	92.8	901	91.6
<u>Hywel Dda University HB</u>									
Cardiff and Vale LA	522	481	92.1	484	92.7	469	89.8	460	88.1
Ceredigion LA	158	142	89.9	142	89.9	138	87.3	137	86.7
Pembrokeshire LA	336	306	91.1	303	90.2	293	87.2	285	84.8
Health Board Total	1016	929	91.4	929	91.4	900	88.6	882	86.8
<u>Powys Teaching HB</u>	327	302	92.4	293	89.6	290	88.7	284	86.9
Unknown	18	14	77.8	15	83.3	14	77.8	13	72.2
Wales Total	9365	8727	93.2	8717	93.1	8491	90.7	8320	88.8

¹ Uptake of acellular pertussis used as proxy

² Completed "4 in 1" preschool booster, the Hib/ MenC booster and second MMR dose by four years of age.

Table 7. Vaccine uptake in children reaching their 5th birthday between 01/10/16 and 31/12/16 and resident on 31/12/16.

Area	Resident children	D3	T3	P3	Po3	Hib3	MenC ¹	PCVf ²	HibMenC	MMR1	MMR2	D4	T4	aP	Po4
	(n)	(n) (%)	(n) (%)	(n) (%)	(n) (%)	(n) (%)	(n) (%)	(n) (%)	(n) (%)	(n) (%)	(n) (%)	(n) (%)	(n) (%)	(n) (%)	(n) (%)
Abertawe Bro Morgannwg University HE	(n)	(n) (%)	(n) (%)	(n) (%)	(n) (%)	(n) (%)	(n) (%)	(n) (%)	(n) (%)	(n) (%)	(n) (%)	(n) (%)	(n) (%)	(n) (%)	(n) (%)
Bridgend LA	484	465 96.1	465 96.1	464 95.9	464 95.9	464 95.9	460 95.0	458 94.6	460 95.0	470 97.1	454 93.8	451 93.2	451 93.2	451 93.2	451 93.2
Neath Port Talbot LA	442	426 96.4	426 96.4	426 96.4	426 96.4	426 96.4	420 95.0	424 95.9	422 95.5	427 96.6	408 92.3	417 94.3	417 94.3	417 94.3	417 94.3
Swansea LA	702	658 93.7	658 93.7	658 93.7	658 93.7	658 93.7	655 93.3	649 92.5	646 92.0	657 93.6	675 96.2	636 90.6	656 93.4	656 93.4	655 93.3
Health Board Total	1628	1549 95.1	1549 95.1	1548 95.1	1548 95.1	1548 95.1	1548 95.1	1545 94.9	1529 93.9	1528 93.9	1539 94.5	1572 96.6	1498 92.0	1524 93.6	1524 93.6
Aneurin Bevan University HB															
Blaenau Gwent LA	200	196 98.0	196 98.0	196 98.0	196 98.0	196 98.0	193 96.5	195 97.5	193 96.5	194 97.0	179 89.5	183 91.5	183 91.5	183 91.5	182 91.0
Caerphilly LA	556	544 97.8	544 97.8	544 97.8	544 97.8	544 97.8	544 97.8	536 96.4	529 95.1	525 94.4	550 98.9	522 93.9	526 94.6	526 94.6	525 94.4
Monmouthshire LA	221	199 90.0	199 90.0	199 90.0	199 90.0	199 90.0	198 89.6	199 90.0	198 89.6	207 93.7	189 85.5	195 88.2	195 88.2	195 88.2	195 88.2
Newport LA	551	518 94.0	518 94.0	518 94.0	518 94.0	518 94.0	518 94.0	497 90.2	504 91.5	495 89.8	532 96.6	478 86.8	492 89.3	492 89.3	493 89.5
Torfaen LA	274	268 97.8	268 97.8	268 97.8	268 97.8	268 97.8	266 97.1	264 96.4	262 95.6	268 97.8	247 90.1	252 92.0	252 92.0	252 92.0	252 92.0
Health Board Total	1802	1725 95.7	1725 95.7	1725 95.7	1725 95.7	1725 95.7	1690 93.8	1691 93.8	1673 92.8	1751 97.2	1615 89.6	1648 91.5	1648 91.5	1647 91.4	1647 91.4
Betsi Cadwaladr University HB															
Anglesey LA	192	184 95.8	184 95.8	184 95.8	185 96.4	184 95.8	181 94.3	182 94.8	181 94.3	186 96.9	181 94.3	187 97.4	187 97.4	187 97.4	187 97.4
Conwy LA	290	279 96.2	279 96.2	279 96.2	279 96.2	278 95.9	273 94.1	273 94.1	276 95.2	282 97.2	269 92.8	276 95.2	276 95.2	276 95.2	276 95.2
Denbighshire LA	287	275 95.8	275 95.8	275 95.8	275 95.8	275 95.8	266 92.7	270 94.1	264 92.0	280 97.6	262 91.3	270 94.1	270 94.1	270 94.1	270 94.1
Flintshire LA	449	423 94.2	423 94.2	424 94.4	422 94.0	423 94.2	418 93.1	420 93.5	422 94.0	439 97.8	418 93.1	438 97.6	438 97.6	438 97.6	438 97.6
Gwynedd LA	337	323 95.8	323 95.8	323 95.8	323 95.8	323 95.8	310 92.0	317 94.1	319 94.7	327 97.0	314 93.2	321 95.3	321 95.3	321 95.3	321 95.3
Wrexham LA	411	393 95.6	393 95.6	393 95.6	393 95.6	393 95.6	387 94.2	392 95.4	390 94.9	405 98.5	381 92.7	395 96.1	395 96.1	395 96.1	395 96.1
Health Board Total	1966	1877 95.5	1877 95.5	1878 95.5	1877 95.5	1876 95.4	1835 93.3	1854 94.3	1852 94.2	1919 97.6	1825 92.8	1887 96.0	1887 96.0	1887 96.0	1887 96.0
Cardiff and Vale University HB															
Cardiff LA	1204	1110 92.2	1110 92.2	1110 92.2	1110 92.2	1110 92.2	1066 88.5	1090 90.5	1082 89.9	1156 96.0	1056 87.7	1097 91.1	1097 91.1	1097 91.1	1097 91.1
Vale of Glamorgan LA	420	400 95.2	400 95.2	400 95.2	400 95.2	400 95.2	392 93.3	395 94.0	396 94.3	413 98.3	380 90.5	398 94.8	398 94.8	398 94.8	398 94.8
Health Board Total	1624	1510 93.0	1510 93.0	1510 93.0	1510 93.0	1510 93.0	1458 89.8	1485 91.4	1478 91.0	1569 96.6	1436 88.4	1495 92.1	1495 92.1	1495 92.1	1495 92.1
Cwm Taf University HB															
Merthyr Tydfil LA	214	208 97.2	208 97.2	208 97.2	208 97.2	208 97.2	204 95.3	206 96.3	206 96.3	211 98.6	202 94.4	205 95.8	205 95.8	205 95.8	205 95.8
Rhondda Cynon Taf LA	770	744 96.6	744 96.6	744 96.6	743 96.5	744 96.6	738 95.8	734 95.3	732 95.1	754 97.9	711 92.3	725 94.2	725 94.2	725 94.2	725 94.2
Health Board Total	984	952 96.7	952 96.7	952 96.7	951 96.6	952 96.7	942 95.7	940 95.5	938 95.3	965 98.1	913 92.8	930 94.5	930 94.5	930 94.5	930 94.5
Hywel Dda University HB															
Carmarthenshire LA	522	491 94.1	491 94.1	491 94.1	491 94.1	491 94.1	486 93.1	484 92.7	484 92.7	501 96.0	469 89.8	481 92.1	481 92.1	481 92.1	481 92.1
Ceredigion LA	158	145 91.8	145 91.8	145 91.8	145 91.8	144 91.1	142 89.9	143 90.5	142 89.9	148 93.7	138 87.3	142 89.9	142 89.9	142 89.9	142 89.9
Pembrokeshire LA	336	309 92.0	309 92.0	309 92.0	309 92.0	309 92.0	304 90.5	304 90.5	303 90.2	316 94.0	293 87.2	306 91.1	306 91.1	306 91.1	306 91.1
Health Board Total	1016	945 93.0	945 93.0	945 93.0	945 93.0	944 92.9	932 91.7	931 91.6	929 91.4	965 95.0	900 88.6	929 91.4	929 91.4	929 91.4	929 91.4
Powys Teaching HB	327	299 91.4	299 91.4	299 91.4	299 91.4	299 91.4	295 90.2	293 89.6	293 89.6	309 94.5	290 88.7	302 92.4	302 92.4	302 92.4	302 92.4
Unknown	18	15 83.3	15 83.3	15 83.3	15 83.3	15 83.3	15 83.3	15 83.3	15 83.3	14 77.8	14 77.8	14 77.8	14 77.8	14 77.8	14 77.8
Wales Total	9365	8872 94.7	8872 94.7	8872 94.7	8870 94.7	8866 94.7	8696 92.9	8737 93.3	8717 93.1	9064 96.8	8491 90.7	8729 93.2	8729 93.2	8727 93.2	8728 93.2

¹ Completed three dose course, or two doses with the second delivered after 115 days of age

² Final (booster) dose of pneumococcal conjugate vaccine

Table 8. Uptake of HPV vaccine in girls reaching 13,14 and 15 years of age between 01/09/16 and 31/08/17 and resident on 31/12/16.

Area	13 years (2016-17 School Year 8) ¹			14 years (2016-17 School Year 9) ¹					15 years (2016-17 School Year 10) ²				
	Resident girls (n)	HPV 1 dose (n)	(%)	Resident girls (n)	HPV 1 dose (n)	(%)	HPV 2 dose (n)	(%)	Resident girls (n)	HPV 1 dose (n)	(%)	HPV 2 dose (n)	(%)
Abertawe Bro Morgannwg University HB													
Bridgend LA	807	0	0.0	780	712	91.3	0	0.0	743	695	93.5	647	87.1
Neath Port Talbot LA	747	0	0.0	704	626	88.9	4	0.6	717	679	94.7	635	88.6
Swansea LA	1225	1	0.1	1245	1088	87.4	0	0.0	1225	1155	94.3	1065	86.9
Health Board Total	2779	1	0.0	2729	2426	88.9	4	0.1	2685	2529	94.2	2347	87.4
Aneurin Bevan University HB													
Blaenau Gwent LA	372	0	0.0	323	287	88.9	2	0.6	373	353	94.6	337	90.3
Caerphilly LA	1018	4	0.4	989	825	83.4	4	0.4	946	891	94.2	837	88.5
Monmouthshire LA	510	1	0.2	533	428	80.3	4	0.8	508	410	80.7	386	76.0
Newport LA	888	1	0.1	900	734	81.6	1	0.1	925	797	86.2	738	79.8
Torfaen LA	482	1	0.2	476	415	87.2	1	0.2	493	451	91.5	426	86.4
Health Board Total	3270	7	0.2	3221	2689	83.5	12	0.4	3245	2902	89.4	2724	83.9
Betsi Cadwaladr University HB													
Anglesey LA	348	1	0.3	348	298	85.6	5	1.4	357	324	90.8	284	79.6
Conwy LA	552	1	0.2	541	401	74.1	2	0.4	539	490	90.9	445	82.6
Denbighshire LA	494	0	0.0	471	379	80.5	0	0.0	482	433	89.8	395	82.0
Flintshire LA	814	0	0.0	734	639	87.1	0	0.0	796	737	92.6	666	83.7
Gwynedd LA	545	61	11.2	558	482	86.4	28	5.0	554	491	88.6	479	86.5
Wrexham LA	712	1	0.1	685	559	81.6	63	9.2	651	582	89.4	534	82.0
Health Board Total	3465	64	1.8	3337	2758	82.6	98	2.9	3379	3057	90.5	2709	80.2
Cardiff and Vale University HB													
Cardiff LA	1926	0	0.0	1872	1538	82.2	13	0.7	1730	1487	86.0	1374	79.4
Vale of Glamorgan LA	713	1	0.1	696	607	87.2	3	0.4	662	605	91.4	551	83.2
Health Board Total	2639	1	0.0	2568	2145	83.5	16	0.6	2392	2092	87.5	1925	80.5
Cwm Taf University HB													
Merthyr Tydfil LA	316	0	0.0	333	300	90.1	1	0.3	288	268	93.1	264	91.7
Rhondda Cynon Taf LA	1289	0	0.0	1372	1265	92.2	1	0.1	1220	1163	95.3	1140	93.4
Health Board Total	1605	0	0.0	1705	1565	91.8	2	0.1	1508	1431	94.9	1404	93.1
Hywel Dda University HB													
Carmarthenshire LA	954	20	2.1	978	877	89.7	49	5.0	936	861	92.0	833	89.0
Ceredigion LA	334	269	80.5	319	264	82.8	241	75.5	310	272	87.7	267	86.1
Pembrokeshire LA	674	8	1.2	614	512	83.4	468	76.2	535	461	86.2	444	83.0
Health Board Total	1962	297	15.1	1911	1653	86.5	758	39.7	1781	1594	89.5	1544	86.7
Powys Teaching HB	643	4	0.6	628	480	76.4	2	0.3	622	529	85.0	488	78.5
Unknown	56	0	0.0	48	40	83.3	5	10.4	55	46	83.6	41	74.5
Wales Total	16419	374	2.3	16147	13756	85.2	897	5.6	15667	14180	90.5	13182	84.1

¹ Timings of HPV immunisation sessions vary between health boards and will not have been complete at the time this report was produced.

² Represents the first School Year 8 group (2014-15) to receive the two dose HPV schedule.

Table 9. Uptake of Men ACWY vaccine in teenagers reaching 14, 15, 16 and 17 years of age between 01/09/16 and 31/08/17 and resident on 31/12/16.

Area	14 years (2016-17 School Year 9) ¹			15 years (2016-17 School Year 10)			16 years (2016-17 School Year 11) ¹			17 years (2016-17 School Year 12)		
	Resident children (n)	MenACWY (n)	(%)	Resident children (n)	MenACWY (n)	(%)	Resident children (n)	MenACWY (n)	(%)	Resident children (n)	MenACWY (n)	(%)
Abertawe Bro Morgannwg University HB												
Bridgend LA	1560	4	0.3	1517	1370	90.3	1686	6	0.4	1548	1346	87.0
Neath Port Talbot LA	1432	4	0.3	1463	1339	91.5	1524	21	1.4	1509	1272	84.3
Swansea LA	2592	5	0.2	2496	2216	88.8	2560	15	0.6	2646	2175	82.2
Health Board Total	5584	13	0.2	5476	4925	89.9	5770	42	0.7	5703	4793	84.0
Aneurin Bevan University HB												
Blaenau Gwent LA	685	0	0.0	698	625	89.5	732	115	15.7	767	605	78.9
Caerphilly LA	2087	32	1.5	2022	1731	85.6	2022	279	13.8	2124	1630	76.7
Monmouthshire LA	1066	3	0.3	1030	785	76.2	1094	539	49.3	1152	791	68.7
Newport LA	1840	26	1.4	1863	1463	78.5	1775	237	13.4	1918	1358	70.8
Torfaen LA	953	2	0.2	1016	880	86.6	1056	214	20.3	1006	755	75.0
Health Board Total	6631	63	1.0	6629	5484	82.7	6679	1384	20.7	6967	5139	73.8
Betsi Cadwaladr University HB												
Anglesey LA	721	4	0.6	720	571	79.3	716	10	1.4	699	517	74.0
Conwy LA	1139	0	0.0	1123	941	83.8	1260	14	1.1	1303	976	74.9
Denbighshire LA	992	4	0.4	1043	809	77.6	1130	104	9.2	1095	773	70.6
Flintshire LA	1510	0	0.0	1583	1194	75.4	1622	21	1.3	1637	1249	76.3
Gwynedd LA	1184	41	3.5	1169	902	77.2	1241	42	3.4	1250	977	78.2
Wrexham LA	1435	3	0.2	1317	1032	78.4	1450	219	15.1	1540	1148	74.5
Health Board Total	6981	52	0.7	6955	5449	78.3	7419	410	5.5	7524	5640	75.0
Cardiff and Vale University HB												
Cardiff LA	3816	1958	51.3	3661	1926	52.6	3723	155	4.2	3694	2761	74.7
Vale of Glamorgan LA	1475	837	56.7	1348	827	61.4	1360	47	3.5	1479	1130	76.4
Health Board Total	5291	2795	52.8	5009	2753	55.0	5083	202	4.0	5173	3891	75.2
Cwm Taf University HB												
Merthyr Tydfil LA	661	1	0.2	627	557	88.8	633	15	2.4	712	609	85.5
Rhondda Cynon Taf LA	2780	14	0.5	2513	2265	90.1	2626	69	2.6	2638	2263	85.8
Health Board Total	3441	15	0.4	3140	2822	89.9	3259	84	2.6	3350	2872	85.7
Hywel Dda University HB												
Cardiff LA	2006	1	0.0	2006	1774	88.4	1992	27	1.4	1986	1636	82.4
Ceredigion LA	661	1	0.2	616	530	86.0	665	6	0.9	686	580	84.5
Pembrokeshire LA	1212	5	0.4	1177	897	76.2	1242	14	1.1	1275	931	73.0
Health Board Total	3879	7	0.2	3799	3201	84.3	3899	47	1.2	3947	3147	79.7
Powys Teaching HB	1309	4	0.3	1292	1060	82.0	1322	86	6.5	1401	1076	76.8
Unknown	107	0	0.0	108	82	75.9	155	15	9.7	167	124	74.3
Wales Total	33223	2949	8.9	32408	25776	79.5	33586	2270	6.8	34232	26682	77.9

¹Timings of MenACWY immunisation sessions vary between health boards and will have only just begun for School Year 9 and School Year 11 age groups at the time this report was produced.

Table 10. MMR, Td/IPV, MenC and MenACWY vaccine uptake in children reaching their 14th birthday between 01/09/16 and 31/08/17 and resident on 31/12/16 (2016-17 school year 9), with breakdown of MMR1 and MMR2 coverage by sex.

Area	Resident children		MMR1		MMR2		Teenage 3 in 1 booster ^{1,2}		MenACWY ²		Resident girls		MMR1 (girls)		MMR2 (girls)		Resident boys		MMR1 (boys)		MMR2 (boys)		
	(n)	(n)	(%)	(n)	(%)	(n)	(%)	(n)	(%)	(n)	(n)	(%)	(n)	(%)	(n)	(%)	(n)	(n)	(%)	(n)	(%)		
Abertawe Bro Morgannwg University HB																							
Bridgend LA	1560	1474	94.5	1384	88.7	11	0.7	4	0.3	780	741	95.0	698	89.5	779	732	94.0	685	87.9				
Neath Port Talbot LA	1432	1370	95.7	1286	89.8	6	0.4	4	0.3	704	677	96.2	645	91.6	728	693	95.2	641	88.0				
Swansea LA	2592	2378	91.7	2236	86.3	29	1.1	5	0.2	1245	1129	90.7	1072	86.1	1347	1249	92.7	1164	86.4				
Health Board Total	5584	5222	93.5	4906	87.9	46	0.8	13	0.2	2729	2547	93.3	2415	88.5	2854	2674	93.7	2490	87.2				
Aneurin Bevan University HB																							
Blaenau Gwent LA	685	648	94.6	621	90.7	1	0.1	0	0.0	323	306	94.7	293	90.7	362	342	94.5	328	90.6				
Caerphilly LA	2087	2002	95.9	1912	91.6	45	2.2	32	1.5	989	944	95.4	905	91.5	1098	1058	96.4	1007	91.7				
Monmouthshire LA	1066	951	89.2	891	83.6	10	0.9	3	0.3	533	470	88.2	435	81.6	533	481	90.2	456	85.6				
Newport LA	1840	1680	91.3	1572	85.4	33	1.8	26	1.4	900	824	91.6	771	85.7	938	856	91.3	801	85.4				
Torfaen LA	953	899	94.3	858	90.0	10	1.0	2	0.2	476	452	95.0	430	90.3	477	447	93.7	428	89.7				
Health Board Total	6631	6180	93.2	5854	88.3	99	1.5	63	1.0	3221	2996	93.0	2834	88.0	3408	3184	93.4	3020	88.6				
Betsi Cadwaladr University HB																							
Anglesey LA	721	677	93.9	650	90.2	5	0.7	4	0.6	348	330	94.8	315	90.5	373	347	93.0	335	89.8				
Conwy LA	1139	1074	94.3	1037	91.0	2	0.2	0	0.0	541	512	94.6	496	91.7	596	560	94.0	539	90.4				
Denbighshire LA	992	926	93.3	881	88.8	6	0.6	4	0.4	471	437	92.8	416	88.3	521	489	93.9	465	89.3				
Flintshire LA	1510	1418	93.9	1354	89.7	1	0.1	0	0.0	734	684	93.2	656	89.4	776	734	94.6	698	89.9				
Gwynedd LA	1184	1126	95.1	1079	91.1	43	3.6	41	3.5	558	536	96.1	517	92.7	626	590	94.2	562	89.8				
Wrexham LA	1435	1351	94.1	1303	90.8	7	0.5	3	0.2	685	642	93.7	617	90.1	750	709	94.5	686	91.5				
Health Board Total	6981	6572	94.1	6304	90.3	64	0.9	52	0.7	3337	3141	94.1	3017	90.4	3642	3429	94.2	3285	90.2				
Cardiff and Vale University HB																							
Cardiff LA	3816	3515	92.1	3260	85.4	1961	51.4	1958	51.3	1872	1736	92.7	1624	86.8	1944	1779	91.5	1636	84.2				
Vale of Glamorgan LA	1475	1382	93.7	1311	88.9	841	57.0	837	56.7	696	650	93.4	607	87.2	779	732	94.0	704	90.4				
Health Board Total	5291	4897	92.6	4571	86.4	2802	53.0	2795	52.8	2568	2386	92.9	2231	86.9	2723	2511	92.2	2340	85.9				
Cwm Taf University HB																							
Merthyr Tydfil LA	661	621	93.9	587	88.8	2	0.3	1	0.2	333	317	95.2	303	91.0	328	304	92.7	284	86.6				
Rhondda Cynon Taf LA	2780	2653	95.4	2524	90.8	21	0.8	14	0.5	1372	1318	96.1	1266	92.3	1408	1335	94.8	1258	89.3				
Health Board Total	3441	3274	95.1	3111	90.4	23	0.7	15	0.4	1705	1635	95.9	1569	92.0	1736	1639	94.4	1542	88.8				
Hywel Dda University HB																							
Carmarthenshire LA	2006	1855	92.5	1765	88.0	15	0.7	1	0.0	978	905	92.5	868	88.8	1028	950	92.4	897	87.3				
Ceredigion LA	661	605	91.5	586	88.7	3	0.5	1	0.2	319	291	91.2	282	88.4	342	314	91.8	304	88.9				
Pembrokeshire LA	1212	1104	91.1	1036	85.5	13	1.1	5	0.4	614	560	91.2	526	85.7	598	544	91.0	510	85.3				
Health Board Total	3879	3564	91.9	3387	87.3	31	0.8	7	0.2	1911	1756	91.9	1676	87.7	1968	1808	91.9	1711	86.9				
Powys Teaching HB																							
Unknown	107	88	82.2	81	75.7	0	0.0	0	0.0	48	42	87.5	38	79.2	59	46	78.0	43	72.9				
Wales Total	33223	30943	93.1	29254	88.1	3075	9.3	2949	8.9	16147	15050	93.2	14283	88.5	17071	15890	93.1	14968	87.7				

¹ Teenage booster dose of diphtheria, tetanus and polio (diphtheria used as proxy)

² Timings of immunisation sessions vary between health boards and will not have been complete at the time this report was produced.

Table 11. MMR, Td/IPV, MenC and MenACWY vaccine uptake in children reaching their 15th birthday between 01/09/16 and 31/08/17 and resident on 31/12/16 (2016-17 school year 10), with breakdown of MMR1 and MMR2 coverage by sex

Area	Resident children		Teenage 3 in 1 booster ¹							Resident girls		MMR1 (girls)		MMR2 (girls)		Resident boys		MMR1 (boys)		MMR2 (boys)		
	(n)	(n) (%)	(n)	(%)	(n)	(%)	(n)	(%)	(n)	(%)	(n)	(%)	(n)	(%)	(n)	(%)	(n)	(%)	(n)	(%)		
Abertawe Bro Morgannwg University HB																						
Bridgend LA	1517	1424 93.9	1329	87.6	1362	89.8	1370	90.3	743	700 94.2	658	88.6	774	724 93.5	671	86.7						
Neath Port Talbot LA	1463	1353 92.5	1250	85.4	1319	90.2	1339	91.5	717	676 94.3	625	87.2	746	677 90.8	625	83.8						
Swansea LA	2496	2287 91.6	2125	85.1	2203	88.3	2216	88.8	1225	1131 92.3	1053	86.0	1271	1156 91.0	1072	84.3						
Health Board Total	5476	5064 92.5	4704 85.9	4884 89.2	4925 89.9				2685	2507 93.4	2336 87.0		2791	2557 91.6	2368 84.8							
Aneurin Bevan University HB																						
Blaenau Gwent LA	698	663 95.0	631	90.4	624	89.4	625	89.5	373	355 95.2	342	91.7	325	308 94.8	289	88.9						
Caerphilly LA	2022	1946 96.2	1852	91.6	1741	86.1	1731	85.6	946	910 96.2	862	91.1	1076	1036 96.3	990	92.0						
Monmouthshire LA	1030	877 85.1	813	78.9	789	76.6	785	76.2	508	430 84.6	405	79.7	521	447 85.8	408	78.3						
Newport LA	1863	1687 90.6	1573	84.4	1474	79.1	1463	78.5	925	839 90.7	794	85.8	936	847 90.5	779	83.2						
Torfaen LA	1016	956 94.1	907	89.3	881	86.7	880	86.6	493	462 93.7	440	89.2	523	494 94.5	467	89.3						
Health Board Total	6629	6129 92.5	5776 87.1	5509 83.1	5484 82.7				3245	2996 92.3	2843 87.6		3381	3132 92.6	2933 86.7							
Betsi Cadwaladr University HB																						
Anglesey LA	720	680 94.4	664	92.2	580	80.6	571	79.3	357	337 94.4	330	92.4	363	343 94.5	334	92.0						
Conwy LA	1123	1047 93.2	1001	89.1	933	83.1	941	83.8	539	506 93.9	482	89.4	583	540 92.6	518	88.9						
Denbighshire LA	1043	967 92.7	919	88.1	830	79.6	809	77.6	482	441 91.5	420	87.1	561	526 93.8	499	88.9						
Flintshire LA	1583	1480 93.5	1416	89.5	1212	76.6	1194	75.4	796	743 93.3	715	89.8	787	737 93.6	701	89.1						
Gwynedd LA	1169	1102 94.3	1059	90.6	887	75.9	902	77.2	554	525 94.8	504	91.0	615	577 93.8	555	90.2						
Wrexham LA	1317	1254 95.2	1228	93.2	1038	78.8	1032	78.4	651	621 95.4	613	94.2	666	633 95.0	615	92.3						
Health Board Total	6955	6530 93.9	6287 90.4	5480 78.8	5449 78.3				3379	3173 93.9	3064 90.7		3575	3356 93.9	3222 90.1							
Cardiff and Vale University HB																						
Cardiff LA	3661	3329 90.9	3064	83.7	2556	69.8	1926	52.6	1730	1567 90.6	1446	83.6	1930	1762 91.3	1618	83.8						
Vale of Glamorgan LA	1348	1256 93.2	1185	87.9	1065	79.0	827	61.4	662	628 94.9	599	90.5	686	628 91.5	586	85.4						
Health Board Total	5009	4585 91.5	4249 84.8	3621 72.3	2753 55.0				2392	2195 91.8	2045 85.5		2616	2390 91.4	2204 84.3							
Cwm Taf University HB																						
Merthyr Tydfil LA	627	595 94.9	550	87.7	557	88.8	557	88.8	288	276 95.8	256	88.9	338	319 94.4	294	87.0						
Rhondda Cynon Taf LA	2513	2379 94.7	2243	89.3	2261	90.0	2265	90.1	1220	1166 95.6	1108	90.8	1293	1213 93.8	1135	87.8						
Health Board Total	3140	2974 94.7	2793 88.9	2818 89.7	2822 89.9				1508	1442 95.6	1364 90.5		1631	1532 93.9	1429 87.6							
Hywel Dda University HB																						
Cardmarthenshire LA	2006	1857 92.6	1814	90.4	1777	88.6	1774	88.4	936	865 92.4	843	90.1	1070	992 92.7	971	90.7						
Ceredigion LA	616	571 92.7	545	88.5	533	86.5	530	86.0	310	288 92.9	278	89.7	306	283 92.5	267	87.3						
Pembrokeshire LA	1177	1083 92.0	1013	86.1	914	77.7	897	76.2	535	497 92.9	466	87.1	642	586 91.3	547	85.2						
Health Board Total	3799	3511 92.4	3372 88.8	3224 84.9	3201 84.3				1781	1650 92.6	1587 89.1		2018	1861 92.2	1785 88.5							
Powys Teaching HB	1292	1162 89.9	1064 82.4	1052 81.4	1060 82.0				622	569 91.5	526 84.6		670	593 88.5	538 80.3							
Unknown	108	96 88.9	92	85.2	78	72.2	82	75.9	55	49 89.1	47	85.5	53	47 88.7	45	84.9						
Wales Total	32408	30051 92.7	28337 87.4	26666 82.3	25776 79.5				15667	14581 93.1	13812 88.2		16735	15468 92.4	14524 86.8							

¹ Teenage booster dose of diphtheria, tetanus and polio (diphtheria used as proxy)

Table 12. MMR, Td/IPV, MenC and MenACWY vaccine uptake in children reaching their 16th birthday between 01/09/16 and 31/08/17 and resident on 31/12/16 (2016-17 school year 11), with breakdown of MMR1 and MMR2 coverage by sex

Area	Resident children		MMR1		MMR2		Teenage 3 in 1 booster ¹		MenACWY ²		Resident girls		MMR1 (girls)		MMR2 (girls)		Resident boys		MMR1 (boys)		MMR2 (boys)	
	(n)	(n)	(%)	(n)	(%)	(n)	(%)	(n)	(%)	(n)	(n)	(n)	(%)	(n)	(%)	(n)	(n)	(n)	(%)	(n)	(%)	
Abertawe Bro Morgannwg University HB	(n)	(n)	(%)	(n)	(%)	(n)	(%)	(n)	(%)	(n)	(n)	(n)	(%)	(n)	(%)	(n)	(n)	(n)	(%)	(n)	(%)	
Bridgend LA	1686	1612	95.6	1532	90.9	1505	89.3	6	0.4	850	811	95.4	771	90.7	836	801	95.8	761	91.0			
Neath Port Talbot LA	1524	1436	94.2	1325	86.9	1339	87.9	21	1.4	724	695	96.0	651	89.9	800	741	92.6	674	84.3			
Swansea LA	2560	2362	92.3	2177	85.0	2219	86.7	15	0.6	1288	1190	92.4	1113	86.4	1272	1172	92.1	1064	83.6			
Health Board Total	5770	5410	93.8	5034	87.2	5063	87.7	42	0.7	2862	2696	94.2	2535	88.6	2908	2714	93.3	2499	85.9			
Aneurin Bevan University HB																						
Blaenau Gwent LA	732	693	94.7	664	90.7	618	84.4	115	15.7	363	340	93.7	325	89.5	369	353	95.7	339	91.9			
Caerphilly LA	2022	1968	97.3	1909	94.4	1696	83.9	279	13.8	964	934	96.9	892	92.5	1058	1034	97.7	1017	96.1			
Monmouthshire LA	1094	952	87.0	871	79.6	841	76.9	539	49.3	527	463	87.9	435	82.5	567	489	86.2	436	76.9			
Newport LA	1775	1662	93.6	1557	87.7	1457	82.1	237	13.4	857	799	93.2	748	87.3	917	862	94.0	808	88.1			
Torfaen LA	1056	1016	96.2	976	92.4	927	87.8	214	20.3	513	493	96.1	473	92.2	543	523	96.3	503	92.6			
Health Board Total	6679	6291	94.2	5977	89.5	5539	82.9	1384	20.7	3224	3029	94.0	2873	89.1	3454	3261	94.4	3103	89.8			
Betsi Cadwaladr University HB																						
Anglesey LA	716	677	94.6	660	92.2	584	81.6	10	1.4	355	337	94.9	327	92.1	361	340	94.2	333	92.2			
Conwy LA	1260	1160	92.1	1081	85.8	1008	80.0	14	1.1	631	582	92.2	548	86.8	629	578	91.9	533	84.7			
Denbighshire LA	1130	1036	91.7	980	86.7	917	81.2	104	9.2	549	505	92.0	482	87.8	580	531	91.6	498	85.9			
Flintshire LA	1622	1527	94.1	1464	90.3	1354	83.5	21	1.3	800	761	95.1	732	91.5	822	766	93.2	732	89.1			
Gwynedd LA	1241	1180	95.1	1138	91.7	1043	84.0	42	3.4	599	576	96.2	553	92.3	642	604	94.1	585	91.1			
Wrexham LA	1450	1388	95.7	1332	91.9	1218	84.0	219	15.1	712	685	96.2	650	91.3	738	703	95.3	682	92.4			
Health Board Total	7419	6968	93.9	6655	89.7	6124	82.5	410	5.5	3646	3446	94.5	3292	90.3	3772	3522	93.4	3363	89.2			
Cardiff and Vale University HB																						
Cardiff LA	3723	3410	91.6	3161	84.9	2755	74.0	155	4.2	1753	1615	92.1	1506	85.9	1970	1795	91.1	1655	84.0			
Vale of Glamorgan LA	1360	1272	93.5	1188	87.4	1099	80.8	47	3.5	669	625	93.4	586	87.6	691	647	93.6	602	87.1			
Health Board Total	5083	4682	92.1	4349	85.6	3854	75.8	202	4.0	2422	2240	92.5	2092	86.4	2661	2442	91.8	2257	84.8			
Cwm Taf University HB																						
Merthyr Tydfil LA	633	600	94.8	560	88.5	580	91.6	15	2.4	301	287	95.3	269	89.4	332	313	94.3	291	87.7			
Rhondda Cynon Taf LA	2626	2519	95.9	2359	89.8	2397	91.3	69	2.6	1269	1227	96.7	1158	91.3	1356	1292	95.3	1201	88.6			
Health Board Total	3259	3119	95.7	2919	89.6	2977	91.3	84	2.6	1570	1514	96.4	1427	90.9	1688	1605	95.1	1492	88.4			
Hywel Dda University HB																						
Carmarthenshire LA	1992	1855	93.1	1794	90.1	1766	88.7	27	1.4	965	914	94.7	888	92.0	1027	941	91.6	906	88.2			
Ceredigion LA	665	621	93.4	594	89.3	582	87.5	6	0.9	306	291	95.1	282	92.2	359	330	91.9	312	86.9			
Pembrokeshire LA	1242	1144	92.1	1089	87.7	928	74.7	14	1.1	563	524	93.1	494	87.7	679	620	91.3	595	87.6			
Health Board Total	3899	3620	92.8	3477	89.2	3276	84.0	47	1.2	1834	1729	94.3	1664	90.7	2065	1891	91.6	1813	87.8			
Powys Teaching HB																						
Unknown	1322	1184	89.6	1103	83.4	1070	80.9	86	6.5	623	562	90.2	519	83.3	699	622	89.0	584	83.5			
Wales Total	155	137	88.4	129	83.2	112	72.3	15	9.7	74	65	87.8	63	85.1	81	72	88.9	66	81.5			
Wales Total	33586	31411	93.5	29643	88.3	28015	83.4	2270	6.8	16255	15281	94.0	14465	89.0	17328	16129	93.1	15177	87.6			

¹ Teenage booster dose of diphtheria, tetanus and polio (diphtheria used as proxy)

² Timings of MenACWY immunisation sessions vary between health boards and will not have been complete at the time this report was produced.

Table 13. MMR, Td/IPV, MenC and MenACWY vaccine uptake in children reaching their 16th birthday between 01/10/16 and 31/12/16 and resident on 31/12/16, with breakdown of MMR1 and MMR2 coverage by sex

Area	Resident children		Teenage 3 in 1 booster ¹							Resident girls		MMR1 (girls)		MMR2 (girls)		Resident boys		MMR1 (boys)		MMR2 (boys)	
	(n)	(n) (%)	(n)	(%)	(n)	(%)	(n)	(%)	(n)	(%)	(n)	(%)	(n)	(%)	(n)	(%)	(n)	(%)	(n)	(%)	
Abertawe Bro Morgannwg University HB	(n)	(n) (%)	(n)	(%)	(n)	(%)	(n)	(%)	(n)	(%)	(n)	(%)	(n)	(%)	(n)	(%)	(n)	(%)	(n)	(%)	
Bridgend LA	453	440 97.1	419	92.5	409	90.3	1	0.2	217	208 95.9	200	92.2	236	232 98.3	219	92.8					
Neath Port Talbot LA	412	389 94.4	347	84.2	365	88.6	4	1.0	174	170 97.7	156	89.7	238	219 92.0	191	80.3					
Swansea LA	606	547 90.3	508	83.8	529	87.3	5	0.8	290	258 89.0	244	84.1	316	289 91.5	264	83.5					
Health Board Total	1471	1376 93.5	1274 86.6	1303 88.6	10	0.7			681	636 93.4	600 88.1	790	740 93.7	674 85.3							
Aneurin Bevan University HB																					
Blaenau Gwent LA	188	182 96.8	176	93.6	163	86.7	25	13.3	86	83 96.5	79	91.9	102	99 97.1	97	95.1					
Caerphilly LA	496	483 97.4	467	94.2	418	84.3	80	16.1	218	213 97.7	203	93.1	278	270 97.1	264	95.0					
Monmouthshire LA	273	238 87.2	222	81.3	210	76.9	143	52.4	135	116 85.9	109	80.7	138	122 88.4	113	81.9					
Newport LA	457	427 93.4	401	87.7	367	80.3	65	14.2	225	207 92.0	198	88.0	231	219 94.8	202	87.4					
Torfaen LA	255	243 95.3	232	91.0	219	85.9	58	22.7	123	116 94.3	109	88.6	132	127 96.2	123	93.2					
Health Board Total	1669	1573 94.2	1498 89.8	1377 82.5	371	22.2			787	735 93.4	698 88.7	881	837 95.0	799 90.7							
Betsi Cadwaladr University HB																					
Anglesey LA	177	171 96.6	166	93.8	146	82.5	5	2.8	90	87 96.7	84	93.3	87	84 96.6	82	94.3					
Conwy LA	318	294 92.5	278	87.4	259	81.4	4	1.3	152	139 91.4	134	88.2	166	155 93.4	144	86.7					
Denbighshire LA	291	265 91.1	260	89.3	234	80.4	25	8.6	140	131 93.6	128	91.4	151	134 88.7	132	87.4					
Flintshire LA	375	353 94.1	342	91.2	309	82.4	6	1.6	189	181 95.8	178	94.2	186	172 92.5	164	88.2					
Gwynedd LA	319	310 97.2	300	94.0	277	86.8	3	0.9	140	137 97.9	134	95.7	179	173 96.6	166	92.7					
Wrexham LA	369	351 95.1	334	90.5	311	84.3	16	4.3	177	170 96.0	161	91.0	192	181 94.3	173	90.1					
Health Board Total	1849	1744 94.3	1680 90.9	1536 83.1	59	3.2			888	845 95.2	819 92.2	961	899 93.5	861 89.6							
Cardiff and Vale University HB																					
Cardiff LA	922	847 91.9	788	85.5	701	76.0	35	3.8	450	416 92.4	390	86.7	472	431 91.3	398	84.3					
Vale of Glamorgan LA	360	328 91.1	302	83.9	292	81.1	12	3.3	184	170 92.4	156	84.8	176	158 89.8	146	83.0					
Health Board Total	1282	1175 91.7	1090 85.0	993 77.5	47	3.7			634	586 92.4	546 86.1	648	589 90.9	544 84.0							
Cwm Taf University HB																					
Merthyr Tydfil LA	147	142 96.6	137	93.2	133	90.5	3	2.0	77	74 96.1	70	90.9	70	68 97.1	67	95.7					
Rhondda Cynon Taf LA	653	625 95.7	601	92.0	605	92.6	21	3.2	334	321 96.1	312	93.4	318	304 95.6	289	90.9					
Health Board Total	800	767 95.9	738 92.3	738 92.3	24	3.0			411	395 96.1	382 92.9	388	372 95.9	356 91.8							
Hywel Dda University HB																					
Carmarthenshire LA	502	474 94.4	462	92.0	450	89.6	8	1.6	254	241 94.9	234	92.1	248	233 94.0	228	91.9					
Ceredigion LA	167	155 92.8	147	88.0	140	83.8	1	0.6	82	79 96.3	77	93.9	85	76 89.4	70	82.4					
Pembrokeshire LA	297	270 90.9	259	87.2	216	72.7	4	1.3	121	111 91.7	103	85.1	176	159 90.3	156	88.6					
Health Board Total	966	899 93.1	868 89.9	806 83.4	13	1.3			457	431 94.3	414 90.6	509	468 91.9	454 89.2							
Powys Teaching HB	349	317 90.8	296 84.8	277 79.4	11	3.2			163	152 93.3	138 84.7	186	165 88.7	158 84.9							
Unknown	50	44 88.0	42	84.0	38	76.0	4	8.0	27	24 88.9	23	85.2	23	20 87.0	19	82.6					
Wales Total	8436	7895 93.6	7486 88.7	7068 83.8	539	6.4			4048	3804 94.0	3620 89.4	4386	4090 93.3	3865 88.1							

¹ Teenage booster dose of diphtheria, tetanus and polio (diphtheria used as proxy)

² Timings of MenACWY immunisation sessions vary between health boards and will not have been complete at the time this report was produced.

Table 14. Uptake of BCG immunisation in children reaching their 1st, 2nd, 5th and 16th birthdays between 01/10/16 and 31/12/16 and resident on 31/12/16.

Area	1 yr			2 yrs			5 yrs			16 yrs		
	Resident children	BCG Immunised	(%)	Resident children	BCG Immunised	(%)	Resident children	BCG Immunised	(%)	Resident children	BCG Immunised	(%)
Abertawe Bro Morgannwg University HB	(n)	(n)	(%)	(n)	(n)	(%)	(n)	(n)	(%)	(n)	(n)	(%)
Bridgend LA	381	12	3.1	419	17	4.1	484	21	4.3	453	9	2.0
Neath Port Talbot LA	376	13	3.5	405	10	2.5	442	15	3.4	412	11	2.7
Swansea LA	630	72	11.4	660	89	13.5	702	74	10.5	606	31	5.1
Health Board Total	1387	97	7.0	1484	116	7.8	1628	110	6.8	1471	51	3.5
Aneurin Bevan University HB												
Blaenau Gwent LA	178	1	0.6	178	3	1.7	200	8	4.0	188	0	0.0
Caerphilly LA	539	16	3.0	556	18	3.2	556	12	2.2	496	3	0.6
Monmouthshire LA	189	10	5.3	221	11	5.0	221	4	1.8	273	2	0.7
Newport LA	530	63	11.9	512	81	15.8	551	84	15.2	457	30	6.6
Torfaen LA	264	2	0.8	236	3	1.3	274	7	2.6	255	2	0.8
Health Board Total	1700	92	5.4	1703	116	6.8	1802	115	6.4	1669	37	2.2
Betsi Cadwaladr University HB												
Anglesey LA	170	6	3.5	182	6	3.3	192	0	0.0	177	2	1.1
Conwy LA	307	9	2.9	264	16	6.1	290	7	2.4	318	4	1.3
Denbighshire LA	242	15	6.2	254	4	1.6	287	8	2.8	291	7	2.4
Flintshire LA	387	12	3.1	404	9	2.2	449	19	4.2	375	7	1.9
Gwynedd LA	306	18	5.9	288	15	5.2	337	11	3.3	319	5	1.6
Wrexham LA	367	29	7.9	387	18	4.7	411	21	5.1	369	14	3.8
Health Board Total	1779	89	5.0	1779	68	3.8	1966	66	3.4	1849	39	2.1
Cardiff and Vale University HB												
Cardiff LA	1118	148	13.2	1144	228	19.9	1204	234	19.4	922	110	11.9
Vale of Glamorgan LA	366	7	1.9	352	19	5.4	420	23	5.5	360	11	3.1
Health Board Total	1484	155	10.4	1496	247	16.5	1624	257	15.8	1282	121	9.4
Cwm Taf Univeristy HB												
Merthyr Tydfil LA	169	12	7.1	197	11	5.6	214	21	9.8	147	3	2.0
Rhondda Cynon Taf LA	644	23	3.6	667	18	2.7	770	35	4.5	653	15	2.3
Health Board Total	813	35	4.3	864	29	3.4	984	56	5.7	800	18	2.3
Hywel Dda University HB												
Carmarthenshire LA	466	20	4.3	455	10	2.2	522	24	4.6	502	67	13.3
Ceredigion LA	138	6	4.3	154	5	3.2	158	11	7.0	167	4	2.4
Pembrokeshire LA	283	9	3.2	297	4	1.3	336	9	2.7	297	5	1.7
Health Board Total	887	35	3.9	906	19	2.1	1016	44	4.3	966	76	7.9
Powys Teaching Health Board	253	4	1.6	306	13	4.2	327	8	2.4	349	5	1.4
Unknown	1	0	0.0	8	0	0.0	18	0	0.0	50	1	2.0
Wales Total	8304	507	6.1	8546	608	7.1	9365	656	7.0	8436	348	4.1

Data reflects immunisations given and recorded on the NCCHD (following notifications to local Child Health Administration Offices), may be subject to under-reporting. BCG is not a routinely scheduled immunisation.

Table 15. Uptake of hepatitis B immunisation in children receiving their first dose within seven days of birth, reaching their 1st, 2nd, 5th and 16th birthdays during 01/10/16 and 31/12/16 and resident on 31/12/16, and percentage who are recorded as completing doses 1 to 4.

Area	1yr					2yrs						5yrs					
	Resident children	Babies at risk of perinatal infection	1 dose	2 doses	3 doses	Resident children	Babies at risk of perinatal infection	1 dose	2 doses	3 doses	4 doses	Resident children	Babies at risk of perinatal infection	1 dose	2 dose	3 doses	4 doses
	(n)	(n)	(%)	(%)	(%)	(n)	(n)	(%)	(%)	(%)	(%)	(n)	(n)	(%)	(%)	(%)	(%)
Abertawe Bro Morgannwg UHB	1387	1	100.0	100.0	100.0	1484	3	100.0	100.0	100.0	100.0	1628	3	100.0	100.0	100.0	100.0
Aneurin Bevan UHB	1700	0	-	-	-	1703	1	100.0	100.0	100.0	-	1802	2	100.0	100.0	100.0	100.0
Betsi Cadwaladr UHB	1779	2	100.0	100.0	100.0	1779	2	100.0	100.0	100.0	100.0	1966	2	100.0	100.0	100.0	100.0
Cardiff and Vale UHB	1484	6	100.0	100.0	100.0	1496	10	100.0	100.0	100.0	70.0	1624	4	100.0	100.0	100.0	100.0
Cwm Taf UHB	813	0	-	-	-	864	0	-	-	-	-	984	0	-	-	-	-
Hywel Dda UHB	887	1	100.0	100.0	100.0	906	1	100.0	100.0	100.0	100.0	1016	2	100.0	100.0	100.0	100.0
Powys Teaching HB	253	0	-	-	-	306	0	-	-	-	-	327	0	-	-	-	-
Unknown	1	0	-	-	-	8	0	-	-	-	-	18	0	-	-	-	-
Wales Total	8304	11	100.0	100.0	100.0	8546	17	100.0	100.0	100.0	76.5	9365	13	100.0	100.0	100.0	100.0

Data reflects immunisations given and recorded on the Public Health Wales All Wales Neonatal Hepatitis B database of babies born to hepatitis B positive mothers.