

Vaccine Uptake in Children in Wales October to December 2015

COVER 117: Wales February 2016



Key points

- For children at one year of age, uptake of the “5 in 1”, MenC and pneumococcal conjugate vaccines all exceeded 95% this quarter. Uptake of the “5 in 1” vaccine exceeded 95% in all Health Boards (HB) and 21 local authority (LA) areas.
- Uptake of two doses of rotavirus vaccine was 94%. Five LA areas and one health board had an uptake above 95%.
- Uptake of the first dose of MMR vaccine in two year old children remained above 95% this quarter. Two health boards and 12 LA areas achieved an uptake of 95%.
- By four years of age, 87% of children were up to date with all routine immunisations. The proportion of children who were up to date exceeded 90% in five LA areas. By the fifth birthday 89% of children were up to date.
- Uptake of the second MMR dose by five years of age was 92%.
- Uptake of the “4 in 1” pre-school booster in five year old children remained at 92% this quarter.
- Uptake of the first dose of the new two dose Human Papillomavirus (HPV) vaccine schedule in girls in the current 2015-16 School Year 9 was 88%.
- Uptake of MenC containing vaccine in 15 year olds remained stable at 82%.
- Coverage of one dose of MMR vaccine in 15 year olds was 94% and coverage of a completed two dose course was 89%.
- Coverage of the Td/IPV teenage booster in 15 year olds was 82%.

These results are for children living in Wales in December 2015 and reaching their first, second, fourth, fifth, 15th and 16th birthdays during the quarter 01/10/2015 to 31/12/2015. Current uptake of HPV vaccination¹ dose 1 in girls in the 2015-16 School Year 8 (reaching their 13th birthday between 01/09/2015 and 31/08/2016) is presented, along with coverage the previous School Year 8 group. Both of these school year groups will have been on the new, two dose HPV vaccine schedule. Coverage of HPV in older girls, who would have been on the previous three dose HPV vaccine schedule, is also presented. BCG and hepatitis B immunisation uptake data are also presented here. BCG and hepatitis B immunisations are not part of the routine childhood schedule and are given selectively following risk assessment; further information on circumstances in which these immunisations should be given can be found in: Immunisation Against Infectious Disease (The Green Book, available from <http://immunisation.dh.gov.uk/category/the-green-book/>). Coverage of neonatal hepatitis B immunisation is presented here, using data from the Public Health Wales Neonatal Hepatitis B database.

Findings

1. Uptake of all three doses of the combined “5 in 1” DTaP/IPV/Hib² vaccine, scheduled at 2, 3 and 4 months of age, in children reaching their first birthday remained stable this quarter at 96.9%. Uptake ranged by Health Board from 95.1% (Powys Teaching UHB) to 98.3% (Cwm Taf UHB) and by Local Authority (LA) from 94.8% (Monmouthshire) to 100% (Merthyr Tydfil). All seven Health Boards and 21 of the 22 LA areas achieved the target 95% uptake (Figures 2 and 5, Tables 2 and 3).

¹ HPV vaccination protects girls against cervical cancer associated with HPV types 16 and 18.

² DTaP/IPV/Hib vaccine protects against Diphtheria, Tetanus, Pertussis (Whooping Cough), Polio and Hib infection.

2. National uptake of a completed one dose course of MenC³ vaccine in children reaching their first birthday this quarter was 97.9% compared to 97.8% last quarter. Uptake in Health Boards ranged from 95.8% (Powys Teaching UHB) to 98.7% (Cwm Taf UHB) and ranged by LA from 95.3% (Monmouthshire) to 100% (Merthyr Tydfil and Torfaen). All seven Health Boards and all 22 LA areas achieved an uptake in excess of the 95% target (Figures 1 and 2, Tables 2 and 3).
3. Uptake of a complete two dose primary course of pneumococcal conjugate vaccination (PCV2³) in children reaching their first birthday was 96.8% this quarter compared to 96.6% last quarter, ranging by LA from 94.7% (Conwy) to 100% (Merthyr Tydfil). All seven Health Boards and 19 LA areas achieved the target 95% uptake (Figures 1 and 2, Table 3).
4. Uptake of two doses of rotavirus vaccine in children reaching their first birthday increased from 93.2% last quarter to 93.7% this quarter. Uptake in Health Boards ranged from 89.1% (Powys Teaching UHB) to 97.5% (Cwm Taf UHB) and ranged by LA from 88.6% (Blaenau Gwent) to 97.9% (Merthyr Tydfil) (Figure 2, Tables 2 and 3).
5. Uptake of the first dose of MMR⁴ in children reaching their second birthday (scheduled at 12 to 13 months of age) was 95.2% this quarter compared to 95.4% last quarter. Uptake ranged by Health Board from 93.6% (Hywel Dda UHB and Powys Teaching UHB) to 97.2% (Betsi Cadwaladr UHB) and by LA area from 90.5% (Monmouthshire) to 98.9% (Merthyr Tydfil) (Figures 1, 2 and 6, Tables 2 and 4). Two Health Boards and 12 LA areas achieved the target of 95% uptake.
6. Uptake of the final dose of Pneumococcal Conjugate Vaccine (PCVf, scheduled at 12 to 13 months of age) in children reaching their second birthday remained stable at 95.6% this quarter. Uptake by LA ranged from 91.6% (Monmouthshire) to 98.9% (Merthyr Tydfil) (Figure 2, Tables 2 and 4). Four Health Boards and 14 LA areas achieved an uptake of 95% or over.
7. Uptake of the Hib/MenC booster (given at 12 to 13 months of age) in children reaching two years of age was 95.0% this quarter, compared to 94.9% last quarter. Uptake ranged by Health Board from 93.3% (Cardiff and Vale UHB) to 96.9% (Betsi Cadwaladr UHB and Cwm Taf UHB), and ranged by LA from 91.1% (Monmouthshire) to 98.9% (Merthyr Tydfil) (Tables 2 and 4). Twelve LA areas achieved uptakes in excess of 95% (Figures 1 and 2).
8. In children reaching four years of age this quarter, coverage of the "4 in 1" DTaP/IPV⁵ pre-school booster increased to 89.6%, compared to 87.7% last quarter. Coverage of the Hib/MenC booster was 94.5% and uptake of two doses of MMR increased to 88.8%, compared to 88.2% last quarter (Table 5). The proportion of children who were up to date with all these routine immunisations at four years of age increased to 86.8% this quarter from 85.5% last quarter. This ranged by Health Board from 83.4% (Aneurin Bevan UHB) to 89.9% (Cwm Taf UHB) and by LA from 78.1% (Newport) to 91.7% (Merthyr Tydfil and Bridgend) (Figure 3, Tables 1 and 5). The proportion of children who were up to date with the above immunisations by their 5th birthday was 89.1% this quarter (compared to 89.7% last quarter), ranging by health board from 86.4% (Cardiff and Vale UHB) to 93.0% (Betsi Cadwaladr UHB) (Table 6).
9. In children reaching five years of age this quarter, coverage of one dose of MMR was 97.1%. Uptake of two doses of MMR decreased to 91.9% this quarter, compared to 92.3%, last quarter (Table 7). Uptake of two doses of MMR ranged by Health Board from 89.8% (Cardiff and Vale UHB) to 94.4% (Betsi Cadwaladr UHB) and by LA from 87.0% (Newport)

³ MenC vaccine protects against meningitis caused by meningococcus group C infection. PCV protects against pneumococcal meningitis, bacteraemia, pneumonia and otitis media. Children reaching one and two years of age this quarter have been scheduled for the two dose course of pneumococcal conjugate vaccination (PCV) at two and four months of age and a one dose MenC primary course scheduled at three months of age. Children reaching 2 years of age this quarter should have been offered a routine dose of the Hib/ MenC and PCV at 12 to 13 months of age.

⁴ MMR protects against measles, mumps and rubella infections.

⁵ DTaP/IPV (and dTaP/IPV) vaccines boost protection against Diphtheria, Tetanus, Pertussis and Polio infection before school entry.

to 96.2% (Flintshire) (Figures 1 and 2, Tables 2 and 7). One LA area exceeded 95% uptake for two doses of MMR by five years of age (Figure 7).

10. Uptake of the “4 in 1” DTaP/IPV⁵ pre-school booster in children reaching their fifth birthday was 92.3% this quarter compared to 92.5% in the previous quarter, ranging by Health Board from 90.6% (Cardiff and Vale UHB) to 95.6% (Betsi Cadwaladr UHB) and by LA from 86.7% (Newport) to 97.8% (Flintshire) (Tables 2, 7). Four LAs achieved the 95% uptake target (Figure 8).
11. Coverage of a two dose primary course of MenC in children reaching their fifth birthday this quarter was 94.5%, compared to 94.8% last quarter. Coverage ranged by Health Board from 91.6% (Cardiff and Vale UHB) to 96.8% (Cwm Taf UHB) and by LA from 90.6% (Monmouthshire) to 97.8% (Bridgend) (Table 7).
12. From September 2014, the HPV vaccination programme changed for School Year 8 girls from a three dose to a two dose schedule following a Joint Committee on Vaccination and Immunisation (JCVI) recommendation. In the revised schedule, the first dose of HPV should be given to girls during School Year 8 with JCVI recommending a gap of 12 months before the second dose of HPV is received. Further information on the changes to the HPV vaccination programme can be found within the [CMO\(2014\)13](#) letter. Timings of school vaccination sessions for the first dose vary in health boards throughout school year 8. Vaccination sessions for girls in the 2015-16 School Year 8 group with HPV dose 1 has begun in some areas and currently 8.8% of girls in this group have been vaccinated (Table 8). Reported uptake in this year group will increase over the next three quarters as more vaccination sessions are carried out in all areas. Current school Year 9 girls (turning 15 years of age during 01/09/15 to 31/08/2016) were the first School Year 8 group to be offered the two dose HPV schedule and should now have received dose 1. Uptake of the first dose in this group was 87.9% (Table 8). Coverage of HPV dose 2 in the 2015-16 School Year 9 group is currently 26.8%. As with the current year 8 girls receiving their first dose, coverage will increase over the next three quarters as vaccination sessions are carried out.
13. Coverage of vaccination with MenC containing vaccine⁶ in teenagers at their 15th birthday decreased to 81.5% from 81.8% last quarter. Coverage ranged by Health Board from 74.4% (Cardiff and Vale UHB) to 90.2% (Cwm Taf HB) and by LA from 69.6% (Pembrokeshire) to 90.6% (Bridgend) (Table 9). The majority of these children are recorded as having received single antigen MenC vaccine, however a small number are recorded as having received the MenACWY vaccine which it was announced that the programme will move to using.
14. Coverage of the Td/IPV⁶ teenage booster in children reaching 15 years of age this quarter decreased to 82.4%, compared to 82.8% last quarter. Coverage ranged by Health Board from 75.5% (Cardiff & Vale UHB) to 90.4% (Cwm Taf HB) and ranged by LA from 71.3% (Pembrokeshire) to 90.6% (Rhondda Cynon Taf) (Table 9).
15. Coverage of two doses of MMR in children reaching 16 years of age increased to 90.2% this quarter, compared to 89.7% last quarter, ranging by LA from 84.1% (Monmouthshire) to 94.3% (Caerphilly). Coverage of one dose of MMR decreased to 94.8% this quarter, from 94.9% last quarter. Coverage of a full course (two doses of MMR) of immunisation against rubella in 16 year old girls this quarter increased to 91.3% this quarter compared to 90.0% last quarter. Coverage of one dose increased to 95.2% this quarter, compared to 95.1% last quarter. National coverage of the Td/IPV⁷ teenage booster in children reaching 16 years of age increased to 83.6%, compared to 82.7% last quarter (Tables 2 and 10).
16. Coverage in the 2015-16 cohort of year 10 girls (girls reaching their 15th birthday during 01/09/15 to 31/08/16) of a complete three dose course of HPV vaccine is currently 84.6%.

⁶ Either MenC booster or MenACWY

⁷Td/IPV boosts protection against Diphtheria, Tetanus and Polio infection before entering adulthood

⁸ BCG protects against tuberculosis infection.

⁹ Numbers of eligible children for BCG are not known

Coverage of a complete three dose course of HPV vaccine in girls reaching their 16th birthday during 01/09/15 to 31/08/16 (2015-16 year 11) is currently 86.9%. Coverage of a complete three dose course of HPV vaccine in girls reaching their 17th birthday during 01/09/15 to 31/08/16 (2015-16 year 12) is currently 87.1% (Table 11). The 2015-16 school year 10 was the last group to be offered the three dose schedule of HPV. A very small minority of girls who started their vaccination course late would be on the two dose schedule and as such will never expect to have a third dose. Although appropriate for the vast majority of girls within this group, this should be kept in mind if using uptake of three doses to indicated a completed HPV course in this group.

17. Uptake of BCG⁸ immunisation is presented in Table 12. These data are based on BCG immunisations recorded in the National Community Child Health Database. BCG immunisation has been received by 5.0%, 7.1%, 7.2% and 4.1% of children reaching their first, second, fifth and 16th birthdays (respectively) during quarter four 2015⁹. This quarter Newport LA had the highest proportions of children given BCG by one year of age (16.0%) and Cardiff LA had the highest proportions of children given BCG by two years of age (19.2%).
18. Uptake data for hepatitis B immunisation, extracted from the Public Health Wales All Wales Neonatal Hepatitis B immunisation database, is presented in Table 13. Uptake of three doses of hepatitis B vaccine in children who were at risk of perinatal infection and reached their first birthday this quarter was 100%. Uptake of four doses of hepatitis B vaccine in children who were at risk of perinatal infection and reached their second birthday this quarter was 91.7%. Uptake of four doses of hepatitis B vaccine in children who were at risk of perinatal infection and reached their fifth birthday this quarter was 100%.

Comment

Uptake of routine vaccination in children at one and two years of age remained high and stable this quarter. Uptake of all routine primary immunisations in babies reaching their first birthday exceeded 95% again this quarter, except for rotavirus (which can't be given beyond 24 weeks of age). MMR uptake continues to be above 95% in children reaching their second birthday, although there has been a slight downward trend since 2013 and there is variation by health board and local authority area.

This quarter again saw a slight increase in the proportion of children who were up to date with their routine immunisations by four years of age, although it remains below 90% with wide variation between health boards and local authority areas. Although higher, the proportion of children who were up to date with their immunisations by five years of age was also below 90%. There is also a downward uptake trend over several quarters in the second dose of MMR. Immunisation status checks, both opportunistically and as routine at school entry, remain key in maintaining and improving coverage and averting future outbreaks of preventable disease.

During 2015 there were considerable changes to the schedule of routine childhood vaccinations in Wales: the addition of routine vaccination against meningococcal group B disease [1], a move from single antigen meningococcal group C vaccine to meningococcal ACWY vaccine in teenagers (with a phased catch-up campaign) [2] and a change in the HPV schedule for teenage girls [3]. This report contains figures for uptake of the first dose of HPV vaccine following the completed first year of the new two dose schedule, for girls who are currently in 2015-16 school year 9. Uptake is slightly lower (88%) than was reported for the equivalent group last year, who would have been on a three dose schedule (90%) [4]. Uptakes for MenB and MenACWY vaccination will be reported in the COVER report as eligible children reach the appropriate birthdays.

[1] Welsh Government (2015) Introduction of MenB Immunisation for Infants, Welsh Health Circular. WHC(2015)040. <http://gov.wales/docs/dhss/publications/150727whc040en.pdf>

[2] Welsh Government (2015) Meningococcal ACWY conjugate vaccination (MenACWY) - Revision, Welsh Health Circular. WHC(2015)037. <http://gov.wales/docs/dhss/publications/150724whc037en.pdf>

[3] Welsh Government (2014) Changes to the Human Papillomavirus (HPV) vaccination programme from September 2014, CMO letter (2014) 13.

<http://gov.wales/docs/phhs/publications/140707vaccinationen.pdf>

[4] Public Health Wales Health Protection Division. Vaccine uptake in Children in Wales, October to December 2014: COVER report 113, March 2015. Cardiff, Public Health Wales

[http://www2.nphs.wales.nhs.uk:8080/VaccinationsImmunisationProgsDocs.nsf/3dc04669c9e1eaa880257062003b246b/9a1fa7447e38bcaf80257e15004b9635/\\$FILE/Cov14q4%20\(Report113\)_v1.pdf](http://www2.nphs.wales.nhs.uk:8080/VaccinationsImmunisationProgsDocs.nsf/3dc04669c9e1eaa880257062003b246b/9a1fa7447e38bcaf80257e15004b9635/$FILE/Cov14q4%20(Report113)_v1.pdf)

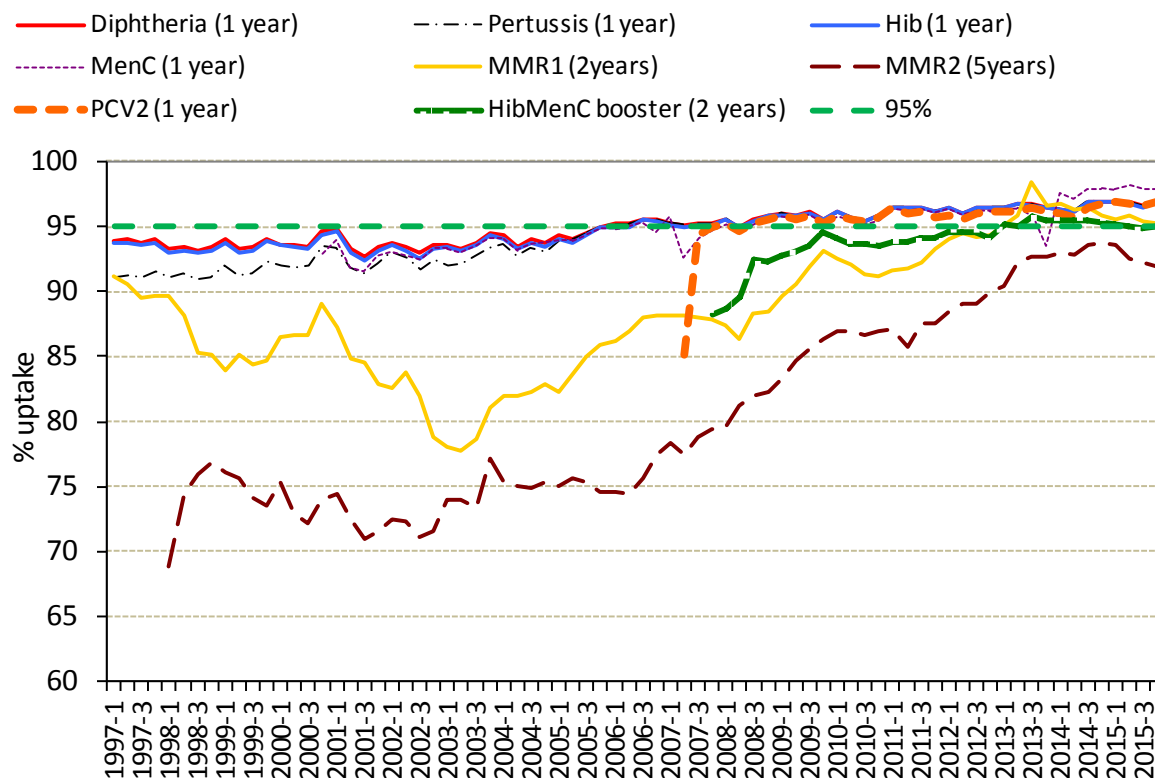
Report prepared by Public Health Wales Vaccine Preventable Disease Programme and Communicable Disease Surveillance Centre.

Data for this report was provided by NHS Wales Informatics Service from the National Community Child Health Database (NCCHD). The data was sourced from Community Child Health databases maintained by local Child Health Office staff in Trusts throughout Wales based on regular returns from doctors and nurses who immunise or advise on immunisation. Uptake data presented throughout are for HB resident population, not for HB GP practice populations. The maps, graphs, tables 1 and 2 are best viewed in colour.

Suggested citation for this report: Public Health Wales Health Protection Division. Vaccine uptake in Children in Wales, October to November 2015: COVER report 117, February 2015. Cardiff, Public Health Wales.

For further information on this report please contact: surveillance.requests@wales.nhs.uk

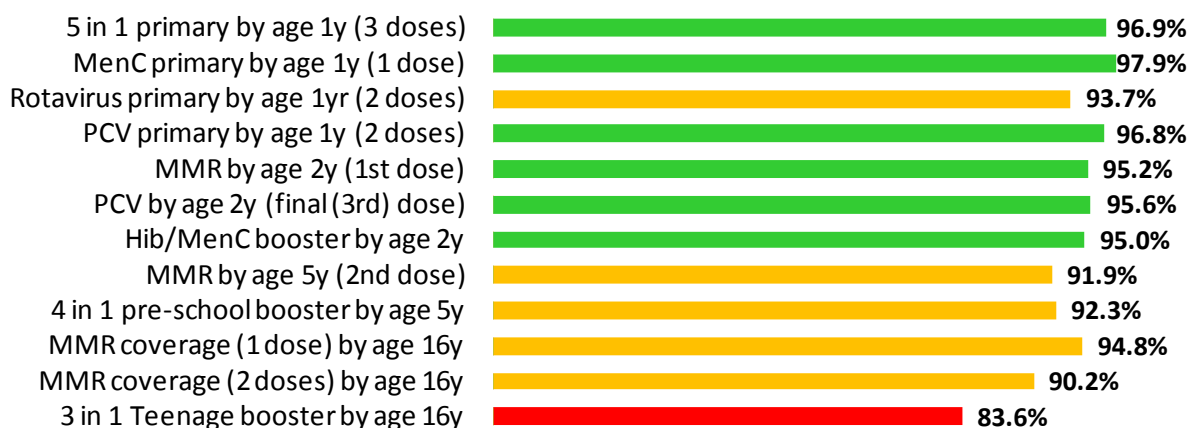
Figure 1. Percentage uptake of childhood immunisations in Wales, quarter 1 1997 to quarter 4 2015*. Data are for children reaching 1 year of age each quarter for diphtheria, pertussis, Hib, MenC⁹ and pneumococcal conjugate vaccine (PCV2), children reaching 2 years of age for MMR1 (first dose) and the Hib/MenC booster, and 5 years of age for MMR2 (second dose).



* Uptake data for quarter 3 2014 to quarter 4 2014 presented here are based on estimates calculated in August 2015, rather than published data, due to data quality problems affecting reported uptake of some immunisations in reports published during this period.

Figure 2. Summary of uptake rates for selected immunisations⁹ in resident children reaching their 1st, 2nd, 5th and 16th birthday between 01/10/15 and 31/12/15 and resident on 31/12/15.

All Wales Summary - COVER117



⁹ MenC uptake for children reaching one year of age is based on a completed one dose course of MenC vaccination.

Figure 3. Percentage uptake of resident children reaching their 4th birthday between 01/10/15 and 31/12/15 and are up to date with all scheduled vaccines¹⁰ by Health Board.

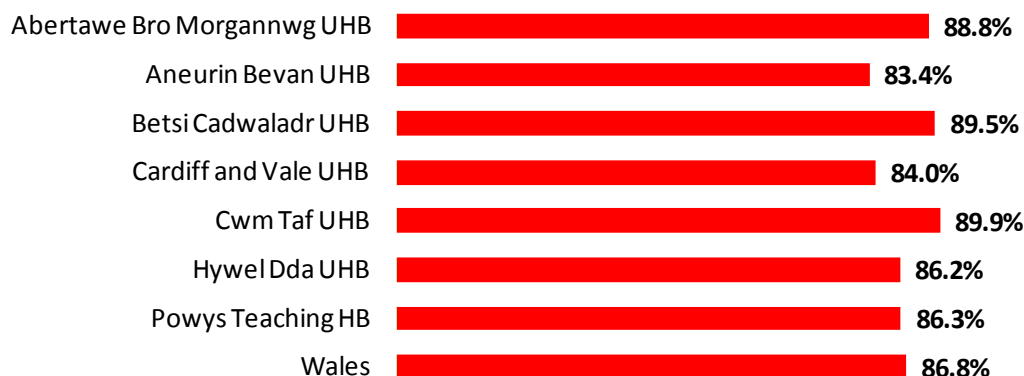
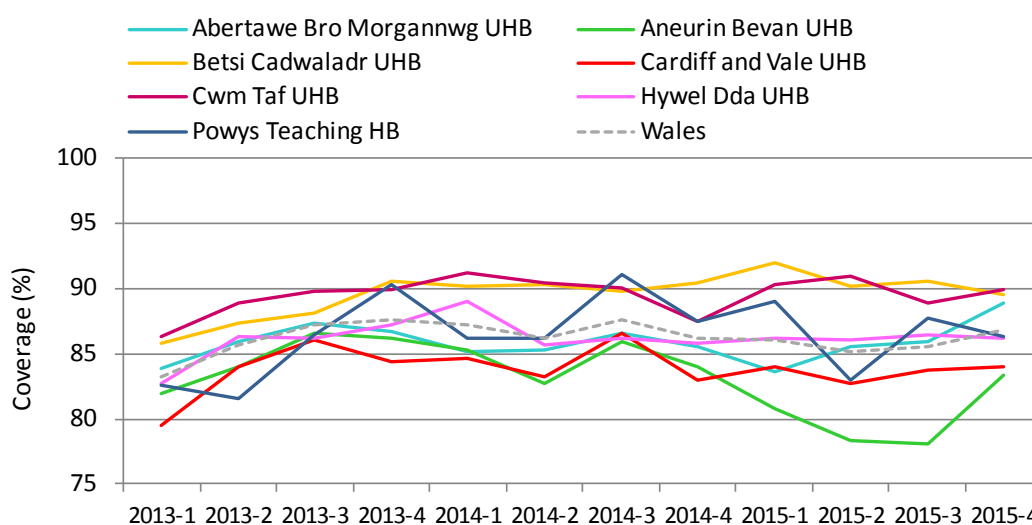


Table 1. Percentages of resident children reaching their 4th birthday during quarter 4 2014 to quarter 4 2015* who are up to date with all scheduled vaccines¹⁰, by Health Board.

Area	Up to date in schedule				
	2014-4	2015-1	2015-2	2015-3	2015-4
Abertawe Bro Morgannwg UHB	85.6	83.6	85.5	85.9	88.8
Aneurin Bevan UHB	84.0	80.7	78.3	78.1	83.4
Betsi Cadwaladr UHB	90.4	91.9	90.2	90.5	89.5
Cardiff and Vale UHB	83.0	84.0	82.7	83.7	84.0
Cwm Taf UHB	87.4	90.3	90.9	88.7	89.9
Hywel Dda UHB	85.8	86.1	86.0	86.4	86.2
Powys Teaching HB	87.5	88.9	83.0	87.7	86.3
Wales	86.2	86.1	85.1	85.5	86.8

Figure 4. Trends in the percentages of children reaching their 4th birthday who are up to date with all scheduled vaccines¹⁰, by Health Board*.



* Uptake data for quarter 3 2014 to quarter 4 2014 presented here are based on estimates calculated in August 2015, rather than published data, due to data quality problems affecting reported uptake of some immunisations in reports published during this period.

¹⁰ Completed "4 in 1" preschool booster, the Hib/MenC booster and second MMR dose by four years of age. The calculation method for proportions of children up to date with routine immunisation by four years of age was revised during 2014 quarter 1, to remove the pneumococcal conjugate vaccine booster dose, as this is not clinically indicated after two years of age.

Figure 5. Uptake of “5 in 1” vaccine in Welsh Local Authority areas in children reaching their 1st birthday between 01/10/15 and 31/12/15.

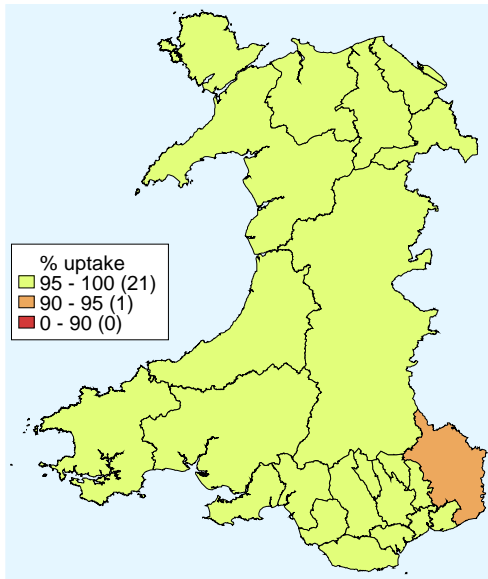


Figure 6. Uptake of at least 1 dose of MMR immunisation in Welsh Local Authority areas in children reaching their 2nd birthday between 01/10/15 and 31/12/15.

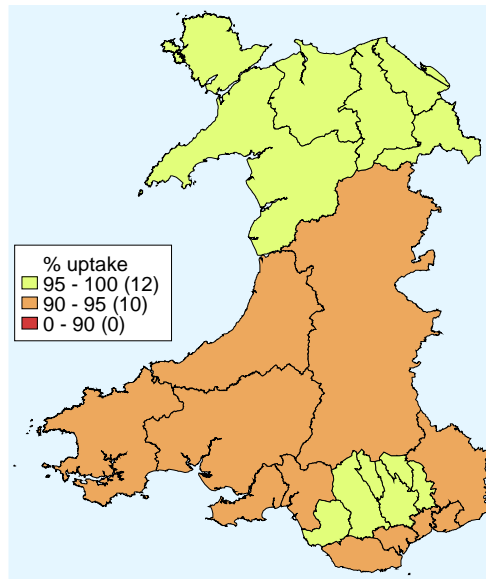


Figure 7. Uptake of two doses of MMR vaccine in Welsh Local Authority areas in children reaching their 5th birthday between 01/10/15 and 31/12/15.

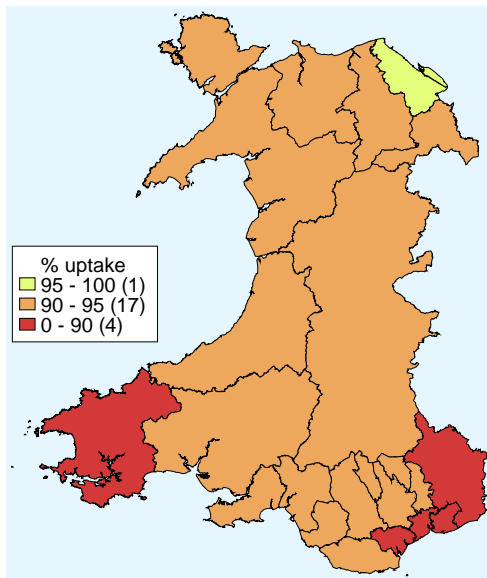


Figure 8. Uptake of “4 in 1” vaccine in Welsh Local Authority areas in children reaching their 5th birthday between 01/10/15 and 31/12/15.

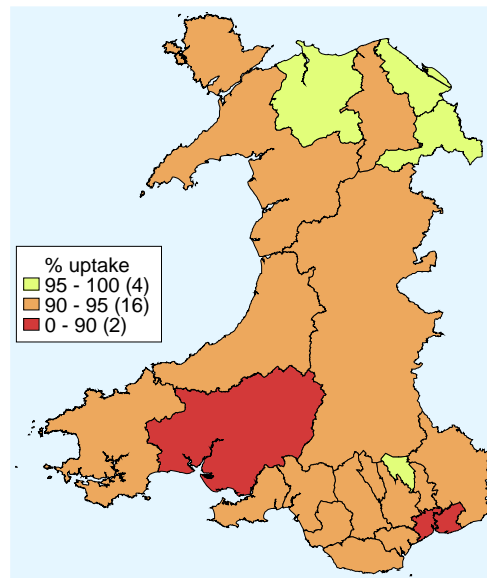


Table 2. Summary table with uptake of selected immunisations in resident children reaching their 1st, 2nd, 5th and 16th birthday between 01/10/15 and 31/12/15 and resident on 31/12/15.

Area	Age 1 year					Age 2 years					Age 4 years			Age 5 years				Age 16 years												
	Resident children (n)	5 in 1 ¹ (n) (%)		MenC ² (n) (%)		Rotavirus (n) (%)		Resident children (n)	MMR1 (n) (%)		PCVf ³ (n) (%)		Hib/MenC (n) (%)		Resident Children (n)	Up to date in schedule ⁴ (n) (%)		Resident children (n)	MMR2 (n) (%)		4 in 1 ¹ (n) (%)		Resident children (n)	MMR1 (n) (%)		MMR2 (n) (%)		3 in 1 Teenage booster ⁵ (n) (%)		
Abertawe Bro Morgannwg UHB	405	393	97.0	398	98.3	379	93.6	401	389	97.0	388	96.8	386	96.3	458	420	91.7	413	386	93.5	377	91.3	387	369	95.3	357	92.2	328	84.8	
Bridgend LA	392	381	97.2	390	99.5	378	96.4	375	351	93.6	354	94.4	354	94.4	422	368	87.2	392	364	92.9	358	91.3	335	324	96.7	311	92.8	292	87.2	
Neath Port Talbot LA	647	630	97.4	634	98.0	614	94.9	612	577	94.3	580	94.8	572	93.5	678	596	87.9	734	690	94.0	688	93.7	645	608	94.3	567	87.9	570	88.4	
Swansea LA	1444	1404	97.2	1422	98.5	1371	94.9	1388	1317	94.9	1322	95.2	1312	94.5	1558	1384	88.8	1539	1440	93.6	1423	92.5	1367	1301	95.2	1235	90.3	1190	87.1	
Aneurin Bevan UHB	176	173	98.3	175	99.4	156	88.6	191	185	96.9	185	96.9	185	96.9	196	170	86.7	194	183	94.3	187	96.4	178	172	96.6	166	93.3	150	84.3	
Blaenau Gwent LA	534	526	98.5	526	98.5	509	95.3	491	472	96.1	476	96.9	475	96.7	538	468	87.0	592	558	94.3	548	92.6	471	460	97.7	444	94.3	381	80.9	
Caerphilly LA	211	200	94.8	201	95.3	189	89.6	190	172	90.5	174	91.6	173	91.1	216	176	81.5	244	215	88.1	222	91.0	246	220	89.4	207	84.1	173	70.3	
Monmouthshire LA	489	473	96.7	477	97.5	459	93.9	487	456	93.6	460	94.5	451	92.6	511	399	78.1	540	470	87.0	468	86.7	456	436	95.6	405	88.8	357	78.3	
Newport LA	233	228	97.9	233	100.0	220	94.4	258	246	95.3	246	95.3	247	95.7	271	231	85.2	275	254	92.4	253	92.0	238	231	97.1	223	93.7	199	83.6	
Torfaen LA	1643	1600	97.4	1612	98.1	1533	93.3	1617	1531	94.7	1541	95.3	1531	94.7	1732	1444	83.4	1845	1680	91.1	1678	90.9	1589	1519	95.6	1445	90.9	1260	79.3	
Health Board Total																														
Betsi Cadwaladr UHB	177	174	98.3	175	98.9	173	97.7	193	188	97.4	189	97.9	189	97.9	187	170	90.9	232	217	93.5	218	94.0	176	168	95.5	165	93.8	136	77.3	
Anglesey LA	266	253	95.1	259	97.4	242	91.0	242	231	95.5	230	95.0	229	94.6	280	254	90.7	264	249	94.3	253	95.8	331	310	93.7	297	89.7	289	87.3	
Conwy LA	249	238	95.6	246	98.8	229	92.0	235	225	95.7	224	95.3	224	95.3	276	240	87.0	287	267	93.0	270	94.1	268	246	91.8	231	86.2	223	83.2	
Denbighshire LA	402	394	98.0	395	98.3	375	93.3	435	429	98.6	428	98.4	428	98.4	455	410	90.1	450	433	96.2	440	97.8	432	410	94.9	397	91.9	376	87.0	
Flintshire LA	282	269	95.4	272	96.5	260	92.2	309	303	98.1	303	98.1	302	97.7	337	300	89.0	304	285	93.8	285	93.8	297	282	94.9	271	91.2	258	86.9	
Gwynedd LA	383	373	97.4	377	98.4	359	93.7	398	385	96.7	388	97.5	384	96.5	412	368	89.3	437	413	94.5	422	96.6	329	312	94.8	303	92.1	275	83.6	
Wrexham LA	1759	1701	96.7	1724	98.0	1638	93.1	1812	1761	97.2	1762	97.2	1756	96.9	1947	1742	89.5	1974	1864	94.4	1888	95.6	1833	1728	94.3	1664	90.8	1557	84.9	
Health Board Total																														
Cardiff and Vale UHB	1160	1106	95.3	1120	96.6	1061	91.5	1137	1071	94.2	1072	94.3	1058	93.1	1177	985	83.7	1157	1033	89.3	1042	90.1	848	798	94.1	753	88.8	661	77.9	
Cardiff LA	346	336	97.1	340	98.3	326	94.2	360	340	94.4	344	95.6	338	93.9	397	337	84.9	337	308	91.4	312	92.6	364	346	95.1	333	91.5	300	82.4	
Vale of Glamorgan LA	1506	1442	95.8	1460	96.9	1387	92.1	1497	1411	94.3	1416	94.6	1396	93.3	1574	1322	84.0	1494	1341	89.8	1354	90.6	1212	1144	94.4	1086	89.6	961	79.3	
Health Board Total																														
Cwm Taf UHB	191	191	100.0	191	100.0	187	97.9	176	174	98.9	174	98.9	174	98.9	206	189	91.7	178	161	90.4	163	91.6	154	145	94.2	142	92.2	143	92.9	
Merthyr Tydfil LA	641	627	97.8	630	98.3	624	97.3	682	655	96.0	658	96.5	657	96.3	732	654	89.3	749	690	92.1	696	92.9	597	577	96.6	548	91.8	541	90.6	
Rhondda Cynon Taf LA	832	818	98.3	821	98.7	811	97.5	858	829	96.6	832	97.0	831	96.9	938	843	89.9	927	851	91.8	859	92.7	751	722	96.1	690	91.9	684	91.1	
Health Board Total																														
Hywel Dda UHB	447	435	97.3	440	98.4	423	94.6	454	426	93.8	426	93.8	423	93.2	522	451	86.4	530	477	90.0	476	89.8	396	374	94.4	351	88.6	330	83.3	
Camrthenshire LA	146	140	95.9	140	95.9	135	92.5	154	145	94.2	149	96.8	147	95.5	148	132	89.2	195	182	93.3	183	93.8	161	149	92.5	139	86.3	144	89.4	
Ceredigion LA	294	288	98.0	290	98.6	277	94.2	305	284	93.1	286	93.8	285	93.4	323	273	84.5	350	312	89.1	316	90.3	305	287	94.1	269	88.2	250	82.0	
Pembrokeshire LA	887	863	97.3	870	98.1	835	94.1	913	855	93.6	861	94.3	855	93.6	993	856	86.2	1075	971	90.3	975	90.7	862	810	94.0	759	88.1	724	84.0	
Health Board Total																														
Powys Teaching UHB	285	271	95.1	273	95.8	254	89.1	297	278	93.6	279	93.9	280	94.3	307	265	86.3	351	317	90.3	322	91.7	321	299	93.1	284	88.5	264	82.2	
Unknown	6	4	66.7	4	66.7	4	66.7	16	14	87.5	14	87.5	14	87.5	17	14	82.4	22	17	77.3	17	77.3	49	42	85.7	40	81.6	33	67.3	
Wales Total	8362	8103	96.9	8186	97.9	7833	93.7	8398	7996	95.2	8027	95.6	7975	95.0	9066	7870	86.8	9227	8481	91.9	8516	92.3	7984	7565	94.8	7203	90.2	6673	83.6	

¹ Uptake of pertussis used as proxy

² Uptake of a completed one dose primary course of MenC vaccination

³ Children receiving the final dose of PCV

⁴ Completed "4 in 1" preschool booster, the Hib/ MenC booster and second MMR dose by four years of age

⁵ Uptake of diphtheria (reinforcing booster dose) used as proxy

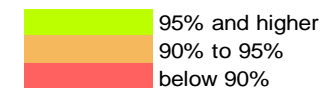


Table 3. Vaccine uptake in children reaching their 1st birthday between 01/10/15 and 31/12/15 and resident on 31/12/15.

Area	Resident children	D3	T3	P3	Po3	Hib3	MMR1	MenC ¹	Rotavirus	PCV2 ²	HibMenC
	(n)	(n) (%)	(n) (%)	(n) (%)	(n) (%)	(n) (%)	(n) (%)	(n) (%)	(n) (%)	(n) (%)	(n) (%)
Abertawe Bro Morgannwg University HB											
Bridgend LA	405	393 97.0	393 97.0	393 97.0	393 97.0	393 97.0	1 0.2	398 98.3	379 93.6	394 97.3	2 0.5
Neath Port Talbot LA	392	381 97.2	381 97.2	381 97.2	381 97.2	381 97.2	0 0.0	390 99.5	378 96.4	381 97.2	0 0.0
Swansea LA	647	630 97.4	630 97.4	630 97.4	630 97.4	630 97.4	2 0.3	634 98.0	614 94.9	631 97.5	2 0.3
Health Board Total	1444	1404 97.2	1404 97.2	1404 97.2	1404 97.2	1404 97.2	3 0.2	1422 98.5	1371 94.9	1406 97.4	4 0.3
Aneurin Bevan University HB											
Blaenau Gwent LA	176	173 98.3	173 98.3	173 98.3	173 98.3	173 98.3	0 0.0	175 99.4	156 88.6	173 98.3	0 0.0
Caerphilly LA	534	526 98.5	526 98.5	526 98.5	526 98.5	526 98.5	2 0.4	526 98.5	509 95.3	525 98.3	2 0.4
Monmouthshire LA	211	200 94.8	200 94.8	200 94.8	200 94.8	200 94.8	0 0.0	201 95.3	189 89.6	200 94.8	0 0.0
Newport LA	489	473 96.7	473 96.7	473 96.7	473 96.7	473 96.7	0 0.0	477 97.5	459 93.9	473 96.7	0 0.0
Torfaen LA	233	228 97.9	228 97.9	228 97.9	228 97.9	228 97.9	0 0.0	233 100.0	220 94.4	228 97.9	0 0.0
Health Board Total	1643	1600 97.4	1600 97.4	1600 97.4	1600 97.4	1600 97.4	2 0.1	1612 98.1	1533 93.3	1599 97.3	2 0.1
Betsi Cadwaladr University HB											
Anglesey LA	177	174 98.3	174 98.3	174 98.3	174 98.3	174 98.3	0 0.0	175 98.9	173 97.7	175 98.9	1 0.6
Conwy LA	266	253 95.1	253 95.1	253 95.1	253 95.1	253 95.1	7 2.6	259 97.4	242 91.0	252 94.7	4 1.5
Denbighshire LA	249	238 95.6	238 95.6	238 95.6	238 95.6	238 95.6	1 0.4	246 98.8	229 92.0	236 94.8	1 0.4
Flintshire LA	402	394 98.0	394 98.0	394 98.0	394 98.0	394 98.0	5 1.2	395 98.3	375 93.3	391 97.3	6 1.5
Gwynedd LA	282	269 95.4	269 95.4	269 95.4	269 95.4	269 95.4	0 0.0	272 96.5	260 92.2	269 95.4	0 0.0
Wrexham LA	383	373 97.4	373 97.4	373 97.4	372 97.1	372 97.1	3 0.8	377 98.4	359 93.7	372 97.1	3 0.8
Health Board Total	1759	1701 96.7	1701 96.7	1701 96.7	1700 96.6	1700 96.6	16 0.9	1724 98.0	1638 93.1	1695 96.4	15 0.9
Cardiff and Vale University HB											
Cardiff LA	1160	1107 95.4	1107 95.4	1106 95.3	1106 95.3	1106 95.3	5 0.4	1120 96.6	1061 91.5	1106 95.3	3 0.3
Vale of Glamorgan LA	346	336 97.1	336 97.1	336 97.1	336 97.1	336 97.1	0 0.0	340 98.3	326 94.2	336 97.1	0 0.0
Health Board Total	1506	1443 95.8	1443 95.8	1442 95.8	1442 95.8	1442 95.8	5 0.3	1460 96.9	1387 92.1	1442 95.8	3 0.2
Cwm Taf University HB											
Merthyr Tydfil LA	191	191 100.0	191 100.0	191 100.0	191 100.0	191 100.0	0 0.0	191 100.0	187 97.9	191 100.0	0 0.0
Rhondda Cynon Taf LA	641	627 97.8	627 97.8	627 97.8	627 97.8	627 97.8	0 0.0	630 98.3	624 97.3	628 98.0	0 0.0
Health Board Total	832	818 98.3	818 98.3	818 98.3	818 98.3	818 98.3	0 0.0	821 98.7	811 97.5	819 98.4	0 0.0
Hywel Dda University HB											
Carmarthenshire LA	447	435 97.3	435 97.3	435 97.3	435 97.3	435 97.3	3 0.7	440 98.4	423 94.6	433 96.9	3 0.7
Ceredigion LA	146	140 95.9	140 95.9	140 95.9	140 95.9	140 95.9	0 0.0	140 95.9	135 92.5	140 95.9	0 0.0
Pembrokeshire LA	294	288 98.0	288 98.0	288 98.0	288 98.0	288 98.0	1 0.3	290 98.6	277 94.2	287 97.6	1 0.3
Health Board Total	887	863 97.3	863 97.3	863 97.3	863 97.3	863 97.3	4 0.5	870 98.1	835 94.1	860 97.0	4 0.5
Powys Teaching HB											
Unknown	285	271 95.1	271 95.1	271 95.1	271 95.1	271 95.1	0 0.0	273 95.8	254 89.1	273 95.8	0 0.0
Wales Total	6	4 66.7	4 66.7	4 66.7	4 66.7	4 66.7	0 0.0	4 66.7	4 66.7	4 66.7	0 0.0
Wales Total	8362	8104 96.9	8104 96.9	8103 96.9	8102 96.9	8102 96.9	30 0.4	8186 97.9	7833 93.7	8098 96.8	28 0.3

¹ Uptake of a completed one dose primary course of MenC vaccination.

² Full primary two dose course of pneumococcal conjugate vaccine.

Table 4. Vaccine uptake in children reaching their 2nd birthday between 01/10/15 and 31/12/15 and resident on 31/12/15.

Area	Resident children	D3	T3	P3	Po3	Hib3	MMR1	MenC ¹	PCV2 ²	PCVf ³	HibMenC
	(n)	(n) (%)	(n) (%)	(n) (%)	(n) (%)	(n) (%)	(n) (%)	(n) (%)	(n) (%)	(n) (%)	(n) (%)
<u>Abertawe Bro Morgannwg University HB</u>											
Bridgend LA	401	394 98.3	394 98.3	394 98.3	394 98.3	394 98.3	389 97.0	395 98.5	392 97.8	388 96.8	386 96.3
Neath Port Talbot LA	375	362 96.5	362 96.5	362 96.5	362 96.5	362 96.5	351 93.6	363 96.8	362 96.5	354 94.4	354 94.4
Swansea LA	612	590 96.4	590 96.4	590 96.4	590 96.4	589 96.2	577 94.3	587 95.9	578 94.4	580 94.8	572 93.5
Health Board Total	1388	1346 97.0	1346 97.0	1346 97.0	1346 97.0	1345 96.9	1317 94.9	1345 96.9	1332 96.0	1322 95.2	1312 94.5
<u>Aneurin Bevan University HB</u>											
Blaenau Gwent LA	191	189 99.0	189 99.0	189 99.0	189 99.0	189 99.0	185 96.9	190 99.5	191 100.0	185 96.9	185 96.9
Caerphilly LA	491	485 98.8	485 98.8	485 98.8	485 98.8	485 98.8	472 96.1	486 99.0	479 97.6	476 96.9	475 96.7
Monmouthshire LA	190	181 95.3	181 95.3	181 95.3	181 95.3	181 95.3	172 90.5	180 94.7	178 93.7	174 91.6	173 91.1
Newport LA	487	476 97.7	476 97.7	476 97.7	476 97.7	476 97.7	475 97.5	456 93.6	472 96.9	465 95.5	460 94.5
Torfaen LA	258	251 97.3	251 97.3	251 97.3	251 97.3	251 97.3	246 95.3	252 97.7	249 96.5	246 95.3	247 95.7
Health Board Total	1617	1582 97.8	1582 97.8	1582 97.8	1582 97.8	1582 97.8	1531 94.7	1580 97.7	1562 96.6	1541 95.3	1531 94.7
<u>Betsi Cadwaladr University HB</u>											
Anglesey LA	193	189 97.9	189 97.9	189 97.9	189 97.9	189 97.9	188 97.4	192 99.5	191 99.0	189 97.9	189 97.9
Conwy LA	242	236 97.5	236 97.5	236 97.5	236 97.5	236 97.5	231 95.5	237 97.9	231 95.5	230 95.0	229 94.6
Denbighshire LA	235	230 97.9	230 97.9	230 97.9	230 97.9	230 97.9	225 95.7	230 97.9	223 94.9	224 95.3	224 95.3
Flintshire LA	435	433 99.5	433 99.5	433 99.5	433 99.5	433 99.5	429 98.6	428 98.4	431 99.1	428 98.4	428 98.4
Gwynedd LA	309	302 97.7	302 97.7	302 97.7	302 97.7	302 97.7	303 98.1	299 96.8	296 95.8	303 98.1	302 97.7
Wrexham LA	398	394 99.0	394 99.0	394 99.0	394 99.0	394 99.0	385 96.7	391 98.2	388 97.5	388 97.5	384 96.5
Health Board Total	1812	1784 98.5	1784 98.5	1784 98.5	1784 98.5	1784 98.5	1761 97.2	1777 98.1	1760 97.1	1762 97.2	1756 96.9
<u>Cardiff and Vale University HB</u>											
Cardiff LA	1137	1099 96.7	1098 96.6	1098 96.6	1098 96.6	1098 96.6	1096 96.4	1071 94.2	1062 93.4	1072 94.3	1058 93.1
Vale of Glamorgan LA	360	350 97.2	350 97.2	350 97.2	350 97.2	350 97.2	340 94.4	351 97.5	343 95.3	344 95.6	338 93.9
Health Board Total	1497	1449 96.8	1448 96.7	1448 96.7	1448 96.7	1448 96.7	1446 96.6	1411 94.3	1405 93.9	1416 94.6	1396 93.3
<u>Cwm Taf University HB</u>											
Merthyr Tydfil LA	176	175 99.4	175 99.4	175 99.4	175 99.4	175 99.4	174 98.9	175 99.4	174 98.9	174 98.9	174 98.9
Rhondda Cynon Taf LA	682	673 98.7	673 98.7	673 98.7	673 98.7	673 98.7	655 96.0	671 98.4	670 98.2	658 96.5	657 96.3
Health Board Total	858	848 98.8	848 98.8	848 98.8	848 98.8	848 98.8	829 96.6	846 98.6	844 98.4	832 97.0	831 96.9
<u>Hywel Dda University HB</u>											
Carmarthenshire LA	454	439 96.7	439 96.7	439 96.7	439 96.7	439 96.7	426 93.8	440 96.9	431 94.9	426 93.8	423 93.2
Ceredigion LA	154	153 99.4	153 99.4	153 99.4	153 99.4	151 98.1	153 99.4	149 96.8	150 97.4	149 96.8	147 95.5
Pembrokeshire LA	305	294 96.4	294 96.4	294 96.4	294 96.4	294 96.4	284 93.1	294 96.4	290 95.1	286 93.8	285 93.4
Health Board Total	913	886 97.0	886 97.0	886 97.0	886 97.0	884 96.8	855 93.6	883 96.7	871 95.4	861 94.3	855 93.6
<u>Powys Teaching HB</u>	297	287 96.6	287 96.6	287 96.6	287 96.6	287 96.6	278 93.6	289 97.3	286 96.3	279 93.9	280 94.3
Unknown	16	16 100.0	16 100.0	16 100.0	16 100.0	16 100.0	14 87.5	16 100.0	16 100.0	14 87.5	14 87.5
Wales Total	8398	8198 97.6	8197 97.6	8197 97.6	8197 97.6	8195 97.6	7996 95.2	8169 97.3	8076 96.2	8027 95.6	7975 95.0

¹ Uptake of a completed one dose primary course of MenC vaccination.

² Full primary two dose course of pneumococcal conjugate vaccine.

³ Final (booster) dose of pneumococcal conjugate vaccine.

Table 5. Vaccine uptake in children reaching their 4th birthday between 01/10/15 and 31/12/15 and resident on 31/12/15. The proportion of children who have received all of these vaccines by their 4th birthday is also presented.

Area	Resident children (n)	4 in 1 Preschool Booster ¹		HibMenC		MMR dose 2		Up to date in schedule ²	
		(n)	(%)	(n)	(%)	(n)	(%)	(n)	(%)
Abertawe Bro Morgannwg University HB									
Bridgend LA	458	422	92.1	444	96.9	434	94.8	420	91.7
Neath Port Talbot LA	422	380	90.0	403	95.5	384	91.0	368	87.2
Swansea LA	678	606	89.4	648	95.6	611	90.1	596	87.9
Health Board Total	1558	1408	90.4	1495	96.0	1429	91.7	1384	88.8
Aneurin Bevan University HB									
Blaenau Gwent LA	196	175	89.3	189	96.4	172	87.8	170	86.7
Caerphilly LA	538	481	89.4	510	94.8	483	89.8	468	87.0
Monmouthshire LA	216	184	85.2	196	90.7	180	83.3	176	81.5
Newport LA	511	418	81.8	469	91.8	418	81.8	399	78.1
Torfaen LA	271	238	87.8	262	96.7	237	87.5	231	85.2
Health Board Total	1732	1496	86.4	1626	93.9	1490	86.0	1444	83.4
Betsi Cadwaladr University HB									
Anglesey LA	187	178	95.2	180	96.3	173	92.5	170	90.9
Conwy LA	280	258	92.1	271	96.8	255	91.1	254	90.7
Denbighshire LA	276	248	89.9	259	93.8	245	88.8	240	87.0
Flintshire LA	455	425	93.4	437	96.0	415	91.2	410	90.1
Gwynedd LA	337	308	91.4	321	95.3	304	90.2	300	89.0
Wrexham LA	412	377	91.5	394	95.6	371	90.0	368	89.3
Health Board Total	1947	1794	92.1	1862	95.6	1763	90.5	1742	89.5
Cardiff and Vale University HB									
Cardiff LA	1177	1024	87.0	1077	91.5	1015	86.2	985	83.7
Vale of Glamorgan LA	397	351	88.4	377	95.0	341	85.9	337	84.9
Health Board Total	1574	1375	87.4	1454	92.4	1356	86.1	1322	84.0
Cwm Taf University HB									
Merthyr Tydfil LA	206	194	94.2	199	96.6	190	92.2	189	91.7
Rhondda Cynon Taf LA	732	667	91.1	706	96.4	659	90.0	654	89.3
Health Board Total	938	861	91.8	905	96.5	849	90.5	843	89.9
Hywel Dda University HB									
Carmarthenshire LA	522	466	89.3	492	94.3	463	88.7	451	86.4
Ceredigion LA	148	135	91.2	139	93.9	133	89.9	132	89.2
Pembrokeshire LA	323	287	88.9	294	91.0	280	86.7	273	84.5
Health Board Total	993	888	89.4	925	93.2	876	88.2	856	86.2
Powys Teaching HB	307	283	92.2	282	91.9	274	89.3	265	86.3
Unknown	17	15	88.2	16	94.1	14	82.4	14	82.4
Wales Total	9066	8120	89.6	8565	94.5	8051	88.8	7870	86.8

¹ Uptake of acellular pertussis used as proxy

² Completed "4 in 1" preschool booster, the Hib/ MenC booster and second MMR dose by four years of age.

Table 6. Vaccine uptake in children reaching their 5th birthday between 01/10/15 and 31/12/15 and resident on 31/12/15. The proportion of children who have received all of these vaccines by their 5th birthday is also presented.

Area	Resident children	4 in 1 Preschool Booster ¹	HibMenCb	MMR dose 2	Up to date in schedule ²
	(n)	(n) (%)	(n) (%)	(n) (%)	(n) (%)
<u>Abertawe Bro Morgannwg University HB</u>					
Bridgend LA	413	377 91.3	401 97.1	386 93.5	371 89.8
Neath Port Talbot LA	392	358 91.3	373 95.2	364 92.9	348 88.8
Swansea LA	734	688 93.7	700 95.4	690 94.0	674 91.8
Health Board Total	1539	1423 92.5	1474 95.8	1440 93.6	1393 90.5
<u>Aneurin Bevan University HB</u>					
Blaenau Gwent LA	194	187 96.4	186 95.9	183 94.3	178 91.8
Caerphilly LA	592	548 92.6	567 95.8	558 94.3	537 90.7
Monmouthshire LA	244	222 91.0	219 89.8	215 88.1	209 85.7
Newport LA	540	468 86.7	490 90.7	470 87.0	443 82.0
Torfaen LA	275	253 92.0	260 94.5	254 92.4	244 88.7
Health Board Total	1845	1678 90.9	1722 93.3	1680 91.1	1611 87.3
<u>Betsi Cadwaladr University HB</u>					
Anglesey LA	232	218 94.0	221 95.3	217 93.5	216 93.1
Conwy LA	264	253 95.8	254 96.2	249 94.3	247 93.6
Denbighshire LA	287	270 94.1	275 95.8	267 93.0	263 91.6
Flintshire LA	450	440 97.8	434 96.4	433 96.2	425 94.4
Gwynedd LA	304	285 93.8	289 95.1	285 93.8	281 92.4
Wrexham LA	437	422 96.6	416 95.2	413 94.5	404 92.4
Health Board Total	1974	1888 95.6	1889 95.7	1864 94.4	1836 93.0
<u>Cardiff and Vale University HB</u>					
Cardiff LA	1157	1042 90.1	1052 90.9	1033 89.3	988 85.4
Vale of Glamorgan LA	337	312 92.6	319 94.7	308 91.4	303 89.9
Health Board Total	1494	1354 90.6	1371 91.8	1341 89.8	1291 86.4
<u>Cwm Taf University HB</u>					
Merthyr Tydfil LA	178	163 91.6	158 88.8	161 90.4	148 83.1
Rhondda Cynon Taf LA	749	696 92.9	717 95.7	690 92.1	677 90.4
Health Board Total	927	859 92.7	875 94.4	851 91.8	825 89.0
<u>Hywel Dda University HB</u>					
Carmarthenshire LA	530	476 89.8	490 92.5	477 90.0	454 85.7
Ceredigion LA	195	183 93.8	182 93.3	182 93.3	178 91.3
Pembrokeshire LA	350	316 90.3	334 95.4	312 89.1	307 87.7
Health Board Total	1075	975 90.7	1006 93.6	971 90.3	939 87.3
<u>Powys Teaching HB</u>	351	322 91.7	322 91.7	317 90.3	308 87.7
Unknown	22	17 77.3	18 81.8	17 77.3	17 77.3
Wales Total	9227	8516 92.3	8677 94.0	8481 91.9	8220 89.1

¹ Uptake of acellular pertussis used as proxy

² Completed "4 in 1" preschool booster, the Hib/ MenC booster and second MMR dose by four years of age.

Table 7. Vaccine uptake in children reaching their 5th birthday between 01/10/15 and 31/12/15 and resident on 31/12/15.

Area	Resident children	D3	T3	P3	Po3	Hib3	MenC ¹	PCVf ²	HibMenC	MMR1	MMR2	D4	T4	aP	Po4
	(n)	(n) (%)	(n) (%)	(n) (%)	(n) (%)	(n) (%)	(n) (%)	(n) (%)	(n) (%)	(n) (%)	(n) (%)	(n) (%)	(n) (%)	(n) (%)	(n) (%)
Abertawe Bro Morgannwg University HB															
Bridgend LA	413	406 98.3	406 98.3	406 98.3	406 98.3	406 98.3	404 97.8	398 96.4	401 97.1	406 98.3	386 93.5	377 91.3	377 91.3	377 91.3	377 91.3
Neath Port Talbot LA	392	383 97.7	383 97.7	383 97.7	383 97.7	383 97.7	381 97.2	370 94.4	373 95.2	386 98.5	364 92.9	358 91.3	358 91.3	358 91.3	358 91.3
Swansea LA	734	709 96.6	709 96.6	709 96.6	709 96.6	707 96.3	696 94.8	689 93.9	700 95.4	715 97.4	690 94.0	688 93.7	688 93.7	688 93.7	688 93.7
Health Board Total	1539	1498 97.3	1498 97.3	1498 97.3	1498 97.3	1496 97.2	1481 96.2	1457 94.7	1474 95.8	1507 97.9	1440 93.6	1423 92.5	1423 92.5	1423 92.5	1423 92.5
Aneurin Bevan University HB															
Blaenau Gwent LA	194	191 98.5	191 98.5	191 98.5	191 98.5	191 98.5	189 97.4	180 92.8	186 95.9	192 99.0	183 94.3	187 96.4	187 96.4	187 96.4	187 96.4
Caerphilly LA	592	578 97.6	578 97.6	578 97.6	578 97.6	578 97.6	576 97.3	564 95.3	567 95.8	582 98.3	558 94.3	548 92.6	548 92.6	548 92.6	548 92.6
Monmouthshire LA	244	225 92.2	225 92.2	225 92.2	225 92.2	225 92.2	221 90.6	222 91.0	219 89.8	228 93.4	215 88.1	222 91.0	222 91.0	222 91.0	222 91.0
Newport LA	540	513 95.0	513 95.0	513 95.0	513 95.0	513 95.0	492 91.1	488 90.4	490 90.7	513 95.0	470 87.0	468 86.7	468 86.7	467 86.5	467 86.5
Torfaen LA	275	267 97.1	267 97.1	267 97.1	267 97.1	267 97.1	257 93.5	261 94.9	260 94.5	270 98.2	254 92.4	253 92.0	253 92.0	253 92.0	253 92.0
Health Board Total	1845	1774 96.2	1774 96.2	1774 96.2	1774 96.2	1774 96.2	1735 94.0	1715 93.0	1722 93.3	1785 96.7	1680 91.1	1678 90.9	1678 90.9	1678 90.9	1677 90.9
Betsi Cadwaladr University HB															
Anglesey LA	232	224 96.6	224 96.6	224 96.6	224 96.6	224 96.6	220 94.8	218 94.0	221 95.3	226 97.4	217 93.5	218 94.0	218 94.0	218 94.0	218 94.0
Conwy LA	264	257 97.3	257 97.3	257 97.3	257 97.3	257 97.3	256 97.0	252 95.5	254 96.2	260 98.5	249 94.3	253 95.8	253 95.8	253 95.8	253 95.8
Denbighshire LA	287	277 96.5	277 96.5	277 96.5	277 96.5	277 96.5	275 95.8	270 94.1	275 95.8	283 98.6	267 93.0	270 94.1	270 94.1	270 94.1	270 94.1
Flintshire LA	450	444 98.7	444 98.7	444 98.7	444 98.7	444 98.7	443 98.4	432 96.0	429 95.3	434 96.4	447 99.3	433 96.2	440 97.8	440 97.8	440 97.8
Gwynedd LA	304	293 96.4	293 96.4	293 96.4	293 96.4	293 96.4	291 95.7	283 93.1	289 95.1	295 97.0	285 93.8	285 93.8	285 93.8	285 93.8	285 93.8
Wrexham LA	437	426 97.5	426 97.5	426 97.5	426 97.5	426 97.5	418 95.7	416 95.2	416 95.2	430 98.4	413 94.5	422 96.6	422 96.6	422 96.6	422 96.6
Health Board Total	1974	1921 97.3	1921 97.3	1921 97.3	1921 97.3	1921 97.3	1916 97.1	1879 95.2	1873 94.9	1889 95.7	1941 98.3	1864 94.4	1888 95.6	1888 95.6	1888 95.6
Cardiff and Vale University HB															
Cardiff LA	1157	1106 95.6	1106 95.6	1104 95.4	1105 95.5	1097 94.8	1050 90.8	1049 90.7	1052 90.9	1115 96.4	1033 89.3	1043 90.1	1043 90.1	1042 90.1	1043 90.1
Vale of Glamorgan LA	337	322 95.5	322 95.5	321 95.3	322 95.5	321 95.3	318 94.4	310 92.0	319 94.7	325 96.4	308 91.4	313 92.9	313 92.9	312 92.6	313 92.9
Health Board Total	1494	1428 95.6	1428 95.6	1425 95.4	1427 95.5	1418 94.9	1368 91.6	1359 91.0	1371 91.8	1440 96.4	1341 89.8	1356 90.8	1356 90.8	1354 90.6	1356 90.8
Cwm Taf University HB															
Merthyr Tydfil LA	178	173 97.2	173 97.2	173 97.2	172 96.6	172 96.6	170 95.5	159 89.3	158 88.8	172 96.6	161 90.4	163 91.6	163 91.6	163 91.6	163 91.6
Rhondda Cynon Taf LA	749	736 98.3	736 98.3	736 98.3	736 98.3	736 98.3	727 97.1	717 95.7	717 95.7	730 97.5	690 92.1	696 92.9	696 92.9	696 92.9	696 92.9
Health Board Total	927	909 98.1	909 98.1	909 98.1	908 98.0	908 98.0	897 96.8	876 94.5	875 94.4	902 97.3	851 91.8	859 92.7	859 92.7	859 92.7	859 92.7
Hywel Dda University HB															
Carmarthenshire LA	530	509 96.0	509 96.0	509 96.0	509 96.0	508 95.8	502 94.7	491 92.6	490 92.5	507 95.7	477 90.0	476 89.8	476 89.8	476 89.8	475 89.6
Ceredigion LA	195	186 95.4	186 95.4	186 95.4	186 95.4	186 95.4	182 93.3	183 93.8	182 93.3	186 95.4	182 93.3	183 93.8	183 93.8	183 93.8	183 93.8
Pembrokeshire LA	350	339 96.9	339 96.9	339 96.9	339 96.9	339 96.9	331 94.6	329 94.0	334 95.4	340 97.1	312 89.1	316 90.3	316 90.3	316 90.3	316 90.3
Health Board Total	1075	1034 96.2	1034 96.2	1034 96.2	1034 96.2	1033 96.1	1015 94.4	1003 93.3	1006 93.6	1033 96.1	971 90.3	975 90.7	975 90.7	975 90.7	974 90.6
Powys Teaching HB	351	332 94.6	332 94.6	332 94.6	332 94.6	331 94.3	328 93.4	320 91.2	322 91.7	333 94.9	317 90.3	322 91.7	322 91.7	322 91.7	322 91.7
Unknown	22	18 81.8	18 81.8	18 81.8	18 81.8	18 81.8	18 81.8	18 81.8	18 81.8	18 81.8	17 77.3	17 77.3	17 77.3	17 77.3	17 77.3
Wales Total	9227	8914 96.6	8914 96.6	8911 96.6	8912 96.6	8894 96.4	8721 94.5	8621 93.4	8677 94.0	8959 97.1	8481 91.9	8518 92.3	8518 92.3	8516 92.3	8516 92.3

¹ Completed three dose course, or two doses with the second delivered after 115 days of age

² Final (booster) dose of pneumococcal conjugate vaccine

Table 8. Uptake of HPV vaccine in girls reaching 13 and 14 years of age between 01/09/15 and 31/08/16 and resident on 31/12/15.

Area	13 years (2015-16 School Year 8) ¹			14 years (2015-16 School Year 9) ²				
	Resident girls (n)	HPV 1 dose (n)	(%)	Resident girls (n)	HPV 1 dose (n)	(%)	HPV 2 dose (n)	(%)
Abertawe Bro Morgannwg University HB								
Bridgend LA	719	0	0	717	635	88.6	11	1.5
Neath Port Talbot LA	659	0	0	668	601	90.0	2	0.3
Swansea LA	1206	0	0	1193	1061	88.9	4	0.3
Health Board Total	2584	0	0	2578	2297	89.1	17	0.7
Aneurin Bevan University HB								
Blaenau Gwent LA	304	239	78.6	342	323	94.4	249	72.8
Caerphilly LA	877	164	18.7	882	821	93.1	222	25.2
Monmouthshire LA	492	32	6.5	466	376	80.7	20	4.3
Newport LA	879	25	2.8	900	756	84.0	38	4.2
Torfaen LA	453	140	30.9	488	444	91.0	157	32.2
Health Board Total	3005	600	20.0	3078	2720	88.4	686	22.3
Betsi Cadwaladr University HB								
Anglesey LA	336	2	0.6	350	303	86.6	3	0.9
Conwy LA	527	0	0.0	527	448	85.0	1	0.2
Denbighshire LA	441	0	0.0	458	387	84.5	1	0.2
Flintshire LA	723	0	0.0	790	687	87.0	0	0.0
Gwynedd LA	567	1	0.2	547	487	89.0	140	25.6
Wrexham LA	627	0	0.0	610	507	83.1	1	0.2
Health Board Total	3221	3	0.1	3282	2819	85.9	146	4.4
Cardiff and Vale University HB								
Cardiff LA	1860	4	0.2	1669	1391	83.3	8	0.5
Vale of Glamorgan LA	681	2	0.3	632	562	88.9	2	0.3
Health Board Total	2541	6	0.2	2301	1953	84.9	10	0.4
Cwm Taf University HB								
Merthyr Tydfil LA	309	1	0.3	279	259	92.8	248	88.9
Rhondda Cynon Taf LA	1277	1	0.1	1120	1067	95.3	994	88.8
Health Board Total	1586	2	0.1	1399	1326	94.8	1242	88.8
Hywel Dda University HB								
Carmarthenshire LA	924	39	4.2	853	784	91.9	756	88.6
Ceredigion LA	297	239	80.5	299	260	87.0	255	85.3
Pembrokeshire LA	608	470	77.3	514	446	86.8	425	82.7
Health Board Total	1829	748	40.9	1666	1490	89.4	1436	86.2
Powys Teaching HB	600	0	0.0	599	505	84.3	464	77.5
Unknown	48	4	8.3	56	44	78.6	10	17.9
Wales Total	15455	1363	8.8	14959	13154	87.9	4011	26.8

¹ Dose 1 immunisation sessions vary between health boards and may not be undertaken until later on in the school year in some areas.

² Represents the first School Year 8 group (2014-15) to receive the two dose HPV schedule. Dose 2 immunisation sessions may not be undertaken until later on in the school year.

Table 9. MMR and Td/IPV vaccine uptake in children reaching their 15th birthday between 01/10/15 and 31/12/15 and resident on 31/12/15 (with breakdown of MMR1 and MMR2 coverage by sex).

Area	Resident children		Teenage 3 in 1 booster ¹						Resident girls		MMR1 (girls)		MMR2 (girls)		Resident boys		MMR1 (boys)		MMR2 (boys)	
	(n)	(n) (%)	(n)	(n) (%)	(n)	(n) (%)	(n)	(n) (%)	(n)	(n) (%)	(n)	(n) (%)	(n)	(n) (%)	(n)	(n) (%)	(n)	(n) (%)		
Abertawe Bro Morgannwg University HB	(n)	(n) (%)	(n)	(n) (%)	(n)	(n) (%)	(n)	(n) (%)	(n)	(n) (%)	(n)	(n) (%)	(n)	(n) (%)	(n)	(n) (%)	(n)	(n) (%)		
Bridgend LA	436	424 97.2	403	92.4	393	90.1	395	90.6	211	202 95.7	194	91.9	225	222 98.7	209	92.9				
Neath Port Talbot LA	372	352 94.6	314	84.4	326	87.6	325	87.4	158	155 98.1	142	89.9	214	197 92.1	172	80.4				
Swansea LA	589	538 91.3	498	84.6	516	87.6	499	84.7	282	254 90.1	239	84.8	307	284 92.5	259	84.4				
Health Board Total	1397	1314 94.1	1215 87.0	1235 88.4	1219 87.3	651	611 93.9	575 88.3	746	703 94.2	640 85.8									
Aneurin Bevan University HB																				
Blaenau Gwent LA	178	174 97.8	168	94.4	155	87.1	151	84.8	81	79 97.5	75	92.6	97	95 97.9	93	95.9				
Caerphilly LA	466	455 97.6	440	94.4	392	84.1	394	84.5	200	197 98.5	188	94.0	266	258 97.0	252	94.7				
Monmouthshire LA	244	218 89.3	203	83.2	188	77.0	186	76.2	116	104 89.7	98	84.5	128	114 89.1	105	82.0				
Newport LA	447	417 93.3	392	87.7	356	79.6	352	78.7	222	204 91.9	195	87.8	224	212 94.6	196	87.5				
Torfaen LA	256	244 95.3	233	91.0	219	85.5	219	85.5	125	118 94.4	111	88.8	131	126 96.2	122	93.1				
Health Board Total	1591	1508 94.8	1436 90.3	1310 82.3	1302 81.8	744	702 94.4	667 89.7	846	805 95.2	768 90.8									
Betsi Cadwaladr University HB																				
Anglesey LA	179	174 97.2	164	91.6	130	72.6	125	69.8	91	88 96.7	83	91.2	88	86 97.7	81	92.0				
Conwy LA	315	292 92.7	277	87.9	249	79.0	239	75.9	151	138 91.4	133	88.1	164	154 93.9	144	87.8				
Denbighshire LA	271	257 94.8	251	92.6	224	82.7	220	81.2	134	129 96.3	125	93.3	137	128 93.4	126	92.0				
Flintshire LA	362	347 95.9	336	92.8	296	81.8	295	81.5	186	179 96.2	176	94.6	176	168 95.5	160	90.9				
Gwynedd LA	314	302 96.2	292	93.0	252	80.3	253	80.6	135	132 97.8	127	94.1	179	170 95.0	165	92.2				
Wrexham LA	351	335 95.4	317	90.3	291	82.9	290	82.6	165	159 96.4	149	90.3	186	176 94.6	168	90.3				
Health Board Total	1792	1707 95.3	1637 91.4	1442 80.5	1422 79.4	862	825 95.7	793 92.0	930	882 94.8	844 90.8									
Cardiff and Vale University HB																				
Cardiff LA	900	827 91.9	770	85.6	668	74.2	656	72.9	438	404 92.2	380	86.8	462	423 91.6	390	84.4				
Vale of Glamorgan LA	344	315 91.6	292	84.9	271	78.8	269	78.2	176	164 93.2	153	86.9	168	151 89.9	139	82.7				
Health Board Total	1244	1142 91.8	1062 85.4	939 75.5	925 74.4	614	568 92.5	533 86.8	630	574 91.1	529 84.0									
Cwm Taf University HB																				
Merthyr Tydfil LA	142	137 96.5	132	93.0	127	89.4	128	90.1	74	71 95.9	67	90.5	68	66 97.1	65	95.6				
Rhondda Cynon Taf LA	596	572 96.0	548	91.9	540	90.6	538	90.3	299	289 96.7	280	93.6	296	283 95.6	268	90.5				
Health Board Total	738	709 96.1	680 92.1	667 90.4	666 90.2	373	360 96.5	347 93.0	364	349 95.9	333 91.5									
Hywel Dda University HB																				
Carmarthenshire LA	403	385 95.5	374	92.8	361	89.6	359	89.1	202	193 95.5	186	92.1	201	192 95.5	188	93.5				
Ceredigion LA	152	144 94.7	138	90.8	132	86.8	131	86.2	74	72 97.3	70	94.6	78	72 92.3	68	87.2				
Pembrokeshire LA	286	259 90.6	247	86.4	204	71.3	199	69.6	115	105 91.3	98	85.2	171	154 90.1	149	87.1				
Health Board Total	841	788 93.7	759 90.2	697 82.9	689 81.9	391	370 94.6	354 90.5	450	418 92.9	405 90.0									
Powys Teaching HB	334	300 89.8	282 84.4	253 75.7	269 80.5	158	144 91.1	134 84.8	176	156 88.6	148 84.1									
Unknown	48	41 85.4	39	81.3	33	68.8	34	70.8	28	24 85.7	23	82.1	20	17 85.0	16	80.0				
Wales Total	7985	7509 94.0	7110 89.0	6576 82.4	6526 81.5	3821	3604 94.3	3426 89.7	4162	3904 93.8	3683 88.5									

¹ Teenage booster dose of diphtheria, tetanus and polio (diphtheria used as proxy)

² Dose of Men C containing vaccine, the majority of which will be MenC vaccine, a small number of teenagers are recorded as having received MenACWY vaccine.

Table 10. MMR and Td/IPV vaccine uptake in children reaching their 16th birthday between 01/10/15 and 31/12/15 and resident on 31/12/15 (with breakdown of MMR1 and MMR2 coverage by sex).

Area	Resident children		Teenage 3 in 1 booster ¹					Resident girls		MMR1 (girls)		MMR2 (girls)		Resident boys		MMR1 (boys)		MMR2 (boys)	
	(n)	(n)	(%)	(n)	(%)	(n)	(%)	(n)	(n)	(%)	(n)	(%)	(n)	(n)	(%)	(n)	(%)		
<u>Abertawe Bro Morgannwg University HB</u>																			
Bridgend LA	387	369	95.3	357	92.2	328	84.8	180	173	96.1	168	93.3	207	196	94.7	189	91.3		
Neath Port Talbot LA	335	324	96.7	311	92.8	292	87.2	146	140	95.9	133	91.1	189	184	97.4	178	94.2		
Swansea LA	645	608	94.3	567	87.9	570	88.4	320	303	94.7	281	87.8	325	305	93.8	286	88.0		
Health Board Total	1367	1301	95.2	1235	90.3	1190	87.1	646	616	95.4	582	90.1	721	685	95.0	653	90.6		
<u>Aneurin Bevan University HB</u>																			
Blaenau Gwent LA	178	172	96.6	166	93.3	150	84.3	91	88	96.7	85	93.4	87	84	96.6	81	93.1		
Caerphilly LA	471	460	97.7	444	94.3	381	80.9	226	217	96.0	208	92.0	245	243	99.2	236	96.3		
Monmouthshire LA	246	220	89.4	207	84.1	173	70.3	121	111	91.7	109	90.1	125	109	87.2	98	78.4		
Newport LA	456	436	95.6	405	88.8	357	78.3	220	207	94.1	195	88.6	236	229	97.0	210	89.0		
Torfaen LA	238	231	97.1	223	93.7	199	83.6	122	119	97.5	116	95.1	116	112	96.6	107	92.2		
Health Board Total	1589	1519	95.6	1445	90.9	1260	79.3	780	742	95.1	713	91.4	809	777	96.0	732	90.5		
<u>Betsi Cadwaladr University HB</u>																			
Anglesey LA	176	168	95.5	165	93.8	136	77.3	95	91	95.8	90	94.7	81	77	95.1	75	92.6		
Conwy LA	331	310	93.7	297	89.7	289	87.3	158	147	93.0	141	89.2	173	163	94.2	156	90.2		
Denbighshire LA	268	246	91.8	231	86.2	223	83.2	138	128	92.8	125	90.6	130	118	90.8	106	81.5		
Flintshire LA	432	410	94.9	397	91.9	376	87.0	226	217	96.0	211	93.4	206	193	93.7	186	90.3		
Gwynedd LA	297	282	94.9	271	91.2	258	86.9	149	143	96.0	139	93.3	148	139	93.9	132	89.2		
Wrexham LA	329	312	94.8	303	92.1	275	83.6	166	160	96.4	157	94.6	163	152	93.3	146	89.6		
Health Board Total	1833	1728	94.3	1664	90.8	1557	84.9	932	886	95.1	863	92.6	901	842	93.5	801	88.9		
<u>Cardiff and Vale University HB</u>																			
Cardiff LA	848	798	94.1	753	88.8	661	77.9	409	392	95.8	370	90.5	439	406	92.5	383	87.2		
Vale of Glamorgan LA	364	346	95.1	333	91.5	300	82.4	172	165	95.9	159	92.4	192	181	94.3	174	90.6		
Health Board Total	1212	1144	94.4	1086	89.6	961	79.3	581	557	95.9	529	91.0	631	587	93.0	557	88.3		
<u>Cwm Taf University HB</u>																			
Merthyr Tydfil LA	154	145	94.2	142	92.2	143	92.9	68	62	91.2	61	89.7	86	83	96.5	81	94.2		
Rhondda Cynon Taf LA	597	577	96.6	548	91.8	541	90.6	287	281	97.9	274	95.5	310	296	95.5	274	88.4		
Health Board Total	751	722	96.1	690	91.9	684	91.1	355	343	96.6	335	94.4	396	379	95.7	355	89.6		
<u>Hywel Dda University HB</u>																			
Carmarthenshire LA	396	374	94.4	351	88.6	330	83.3	193	187	96.9	173	89.6	203	187	92.1	178	87.7		
Ceredigion LA	161	149	92.5	139	86.3	144	89.4	79	74	93.7	71	89.9	82	75	91.5	68	82.9		
Pembrokeshire LA	305	287	94.1	269	88.2	250	82.0	137	126	92.0	119	86.9	168	161	95.8	150	89.3		
Health Board Total	862	810	94.0	759	88.1	724	84.0	409	387	94.6	363	88.8	453	423	93.4	396	87.4		
<u>Powys Teaching HB</u>	321	299	93.1	284	88.5	264	82.2	166	154	92.8	146	88.0	155	145	93.5	138	89.0		
Unknown	49	42	85.7	40	81.6	33	67.3	17	16	94.1	15	88.2	31	26	83.9	25	80.6		
Wales Total	7984	7565	94.8	7203	90.2	6673	83.6	3886	3701	95.2	3546	91.3	4097	3864	94.3	3657	89.3		

¹ Teenage booster dose of diphtheria, tetanus and polio (diphtheria used as proxy).

Table 11. Uptake of HPV vaccine in girls reaching appropriate birthdays between 01/09/15 and 31/08/16 and resident on 31/12/15.

Area	15 years							16 years							17 years						
	Resident girls	1 dose	2 doses	3 doses ¹	Resident girls	1 dose	2 doses	3 doses	Resident girls	1 dose	2 doses	3 doses	Resident girls	1 dose	2 doses	3 doses					
	(n)	(n)	(%)	(n)	(%)	(n)	(%)	(n)	(n)	(%)	(n)	(%)	(n)	(n)	(%)	(n)	(%)	(n)	(%)		
ABM UHB																					
Bridgend LA	808	741	91.7	729	90.2	675	83.5	730	687	94.1	683	93.6	672	92.1	764	700	91.6	695	91.0	690	90.3
Neath Port Talbot LA	661	622	94.1	612	92.6	581	87.9	652	615	94.3	609	93.4	599	91.9	727	670	92.2	663	91.2	659	90.6
Swansea LA	1245	1146	92.0	1122	90.1	1062	85.3	1215	1110	91.4	1099	90.5	1075	88.5	1163	1050	90.3	1043	89.7	1032	88.7
Health Board Total	2714	2509	92.4	2463	90.8	2318	85.4	2597	2412	92.9	2391	92.1	2346	90.3	2654	2420	91.2	2401	90.5	2381	89.7
Aneurin Bevan UHB																					
Blaenau Gwent LA	343	332	96.8	328	95.6	305	88.9	370	346	93.5	340	91.9	331	89.5	380	364	95.8	363	95.5	356	93.7
Caerphilly LA	908	851	93.7	847	93.3	811	89.3	928	842	90.7	838	90.3	827	89.1	999	931	93.2	926	92.7	918	91.9
Monmouthshire LA	475	367	77.3	357	75.2	340	71.6	541	437	80.8	430	79.5	424	78.4	525	414	78.9	411	78.3	405	77.1
Newport LA	840	717	85.4	712	84.8	665	79.2	875	777	88.8	765	87.4	742	84.8	939	812	86.5	802	85.4	786	83.7
Torfaen LA	511	476	93.2	470	92.0	450	88.1	471	423	89.8	420	89.2	401	85.1	538	494	91.8	492	91.4	479	89.0
Health Board Total	3077	2743	89.1	2714	88.2	2571	83.6	3185	2825	88.7	2793	87.7	2725	85.6	3381	3015	89.2	2994	88.6	2944	87.1
Betsi Cadwaladr UHB																					
Anglesey LA	352	319	90.6	313	88.9	302	85.8	341	307	90.0	306	89.7	301	88.3	358	320	89.4	317	88.5	307	85.8
Conwy LA	609	555	91.1	543	89.2	530	87.0	592	532	89.9	531	89.7	523	88.3	585	536	91.6	531	90.8	527	90.1
Denbighshire LA	527	472	89.6	468	88.8	460	87.3	511	451	88.3	445	87.1	437	85.5	551	493	89.5	492	89.3	488	88.6
Flintshire LA	790	726	91.9	723	91.5	701	88.7	782	717	91.7	707	90.4	688	88.0	791	723	91.4	718	90.8	707	89.4
Gwynedd LA	587	532	90.6	527	89.8	515	87.7	598	543	90.8	536	89.6	533	89.1	639	575	90.0	569	89.0	559	87.5
Wrexham LA	670	617	92.1	606	90.4	593	88.5	702	624	88.9	616	87.7	606	86.3	676	607	89.8	607	89.8	605	89.5
Health Board Total	3535	3221	91.1	3180	90.0	3101	87.7	3526	3174	90.0	3141	89.1	3088	87.6	3600	3254	90.4	3234	89.8	3193	88.7
Cardiff & Vale UHB																					
Cardiff LA	1706	1474	86.4	1442	84.5	1276	74.8	1753	1541	87.9	1522	86.8	1432	81.7	1824	1576	86.4	1548	84.9	1458	79.9
Vale of Glamorgan LA	643	585	91.0	576	89.6	504	78.4	704	648	92.0	645	91.6	608	86.4	767	657	85.7	652	85.0	629	82.0
Health Board Total	2349	2059	87.7	2018	85.9	1780	75.8	2457	2189	89.1	2167	88.2	2040	83.0	2591	2233	86.2	2200	84.9	2087	80.5
Cwm Taf UHB																					
Merthyr Tydfil LA	278	261	93.9	260	93.5	257	92.4	308	286	92.9	284	92.2	280	90.9	306	283	92.5	280	91.5	279	91.2
Rhondda Cynon Taf LA	1150	1105	96.1	1095	95.2	1064	92.5	1181	1123	95.1	1118	94.7	1106	93.6	1237	1178	95.2	1171	94.7	1161	93.9
Health Board Total	1428	1366	95.7	1355	94.9	1321	92.5	1489	1409	94.6	1402	94.2	1386	93.1	1543	1461	94.7	1451	94.0	1440	93.3
Hywel Dda UHB																					
Carmarthenshire LA	833	780	93.6	770	92.4	757	90.9	739	660	89.3	656	88.8	650	88.0	808	739	91.5	736	91.1	733	90.7
Ceredigion LA	288	262	91.0	261	90.6	255	88.5	307	272	88.6	269	87.6	265	86.3	309	265	85.8	262	84.8	261	84.5
Pembrokeshire LA	542	471	86.9	464	85.6	443	81.7	617	542	87.8	535	86.7	520	84.3	640	561	87.7	549	85.8	526	82.2
Health Board Total	1663	1513	91.0	1495	89.9	1455	87.5	1663	1474	88.6	1460	87.8	1435	86.3	1757	1565	89.1	1547	88.0	1520	86.5
Powys Teaching LHB	603	500	82.9	494	81.9	471	78.1	650	538	82.8	524	80.6	509	78.3	722	609	84.3	603	83.5	593	82.1
Unknown	78	60	76.9	59	75.6	57	73.1	70	57	81.4	56	80.0	56	80.0	73	57	78.1	56	76.7	56	76.7
Wales Total	15447	13971	90.4	13778	89.2	13074	84.6	15637	14078	90.0	13934	89.1	13585	86.9	16321	14614	89.5	14486	88.8	14214	87.1

¹A small number of these girls were on the two dose schedule, due to starting their HPV courses late. These girls will not be expected to have a third dose, therefore third dose coverage is not a reflection of those who have completed a course in this small number of cases.

Table 12. Uptake of BCG immunisation in children reaching their 1st, 2nd, 5th and 16th birthdays between 01/10/15 and 31/12/15 and resident on 31/12/15.

Area	1 yr			2 yrs			5 yrs			16 yrs		
	Resident children	BCG Immunised	(%)	Resident children	BCG Immunised	(%)	Resident children	BCG Immunised	(%)	Resident children	BCG Immunised	(%)
Abertawe Bro Morgannwg University HB	(n)	(n)	(%)	(n)	(n)	(%)	(n)	(n)	(%)	(n)	(n)	(%)
Bridgend LA	405	14	3.5	401	16	4.0	413	13	3.1	387	5	1.3
Neath Port Talbot LA	392	8	2.0	375	9	2.4	392	15	3.8	335	1	0.3
Swansea LA	647	83	12.8	612	70	11.4	734	89	12.1	645	39	6.0
Health Board Total	1444	105	7.3	1388	95	6.8	1539	117	7.6	1367	45	3.3
Aneurin Bevan University HB												
Blaenau Gwent LA	176	3	1.7	191	8	4.2	194	5	2.6	178	2	1.1
Caerphilly LA	534	14	2.6	491	7	1.4	592	12	2.0	471	5	1.1
Monmouthshire LA	211	10	4.7	190	3	1.6	244	10	4.1	246	5	2.0
Newport LA	489	78	16.0	487	72	14.8	540	86	15.9	456	30	6.6
Torfaen LA	233	2	0.9	258	2	0.8	275	10	3.6	238	0	0.0
Health Board Total	1643	107	6.5	1617	92	5.7	1845	123	6.7	1589	42	2.6
Betsi Cadwaladr University HB												
Anglesey LA	177	6	3.4	193	7	3.6	232	8	3.4	176	0	0.0
Conwy LA	266	16	6.0	242	8	3.3	264	11	4.2	331	9	2.7
Denbighshire LA	249	3	1.2	235	12	5.1	287	10	3.5	268	7	2.6
Flintshire LA	402	8	2.0	435	19	4.4	450	26	5.8	432	14	3.2
Gwynedd LA	282	15	5.3	309	14	4.5	304	16	5.3	297	7	2.4
Wrexham LA	383	16	4.2	398	25	6.3	437	22	5.0	329	13	4.0
Health Board Total	1759	64	3.6	1812	85	4.7	1974	93	4.7	1833	50	2.7
Cardiff and Vale University HB												
Cardiff LA	1160	82	7.1	1137	218	19.2	1157	225	19.4	848	107	12.6
Vale of Glamorgan LA	346	6	1.7	360	9	2.5	337	17	5.0	364	13	3.6
Health Board Total	1506	88	5.8	1497	227	15.2	1494	242	16.2	1212	120	9.9
Cwm Taf Uiveristy HB												
Merthyr Tydfil LA	191	11	5.8	176	18	10.2	178	12	6.7	154	3	1.9
Rhondda Cynon Taf LA	641	15	2.3	682	25	3.7	749	23	3.1	597	10	1.7
Health Board Total	832	26	3.1	858	43	5.0	927	35	3.8	751	13	1.7
Hywel Dda University HB												
Carmarthenshire LA	447	9	2.0	454	17	3.7	530	23	4.3	396	44	11.1
Ceredigion LA	146	5	3.4	154	13	8.4	195	8	4.1	161	3	1.9
Pembrokeshire LA	294	2	0.7	305	14	4.6	350	7	2.0	305	8	2.6
Health Board Total	887	16	1.8	913	44	4.8	1075	38	3.5	862	55	6.4
Powys Teaching Health Board	285	11	3.9	297	8	2.7	351	13	3.7	321	4	1.2
Unknown	6	0	0.0	16	1	6.3	22	0	0.0	49	2	4.1
Wales Total	8362	417	5.0	8398	595	7.1	9227	661	7.2	7984	331	4.1

Data reflects immunisations given and recorded on the NCCHD (following notifications to local Child Health Administration Offices), may be subject to under-reporting. BCG is not a routinely scheduled immunisation.

Table 13. Uptake of hepatitis B immunisation in children receiving their first dose within seven days of birth, reaching their 1st, 2nd, 5th and 16th birthdays during 01/10/15 and 31/12/15 and resident on 31/12/15, and percentage who are recorded as completing doses 1 to 3.

Area	1yr					2yrs						5yrs					
	Resident children	Babies at risk of perinatal infection	1 dose (%)	2 doses (%)	3 doses (%)	Resident children	Babies at risk of perinatal infection	1 dose (%)	2 doses (%)	3 doses (%)	4 doses (%)	Resident children	Babies at risk of perinatal infection	1 dose (%)	2 dose (%)	3 doses (%)	4 doses (%)
Abertawe Bro Morgannwg UHB	1444	3	100.0	100.0	100.0	1388	1	100.0	100.0	100.0	100.0	1539	2	100.0	100.0	100.0	100.0
Aneurin Bevan UHB	1643	1	100.0	100.0	100.0	1617	4	100.0	100.0	100.0	100.0	1845	5	100.0	100.0	100.0	100.0
Betsi Cadwaladr UHB	1759	3	100.0	100.0	100.0	1812	0	-	-	-	-	1974	4	100.0	100.0	100.0	100.0
Cardiff and Vale UHB	1506	10	100.0	100.0	100.0	1497	6	100.0	100.0	100.0	83.3	1494	6	100.0	100.0	100.0	100.0
Cwm Taf UHB	832	0	-	-	-	858	0	-	-	-	-	927	0	-	-	-	-
Hywel Dda UHB	887	1	100.0	100.0	100.0	913	1	100.0	100.0	100.0	100.0	1075	0	-	-	-	-
Powys Teaching HB	285	0	-	-	-	297	0	-	-	-	-	351	0	-	-	-	-
Unknown	6	0	-	-	-	16	0	-	-	-	-	22	0	-	-	-	-
Wales Total	8362	18	100.0	100.0	100.0	8398	12	100.0	100.0	100.0	91.7	9227	17	100.0	100.0	100.0	100.0

Data reflects immunisations given and recorded on the Public Health Wales All Wales Neonatal Hepatitis B database of babies born to hepatitis B positive mothers.