



GIG  
CYMRU  
NHS  
WALES

Iechyd Cyhoeddus  
Cymru  
Public Health  
Wales

# Weekly Acute Respiratory Infection Report

Public Health Wales

Communicable Disease Surveillance Centre

Report week: 11 (ending 16 March 2025)

## Headline

- Influenza activity remains at low levels, but is still circulating, with cases continuing to be confirmed in the community and in hospitals. GP consultations for influenza-like illness and confirmed case numbers have decreased in the most recent week, while test positivity remained stable. Influenza B was the most frequently detected type last week.
- Surveillance indicators suggest that the peak of the influenza season has passed, however cases remain elevated and there remains potential for further increases in influenza B.
- Respiratory Syncytial Virus (RSV) has returned to baseline levels.
- COVID-19 case numbers have remained broadly stable in recent weeks.
- GP consultations for acute respiratory infections decreased compared to the previous week.
- According to EuroMoMo method, there has been no substantial excess in all-cause mortality reported so far this season.

## Foreword

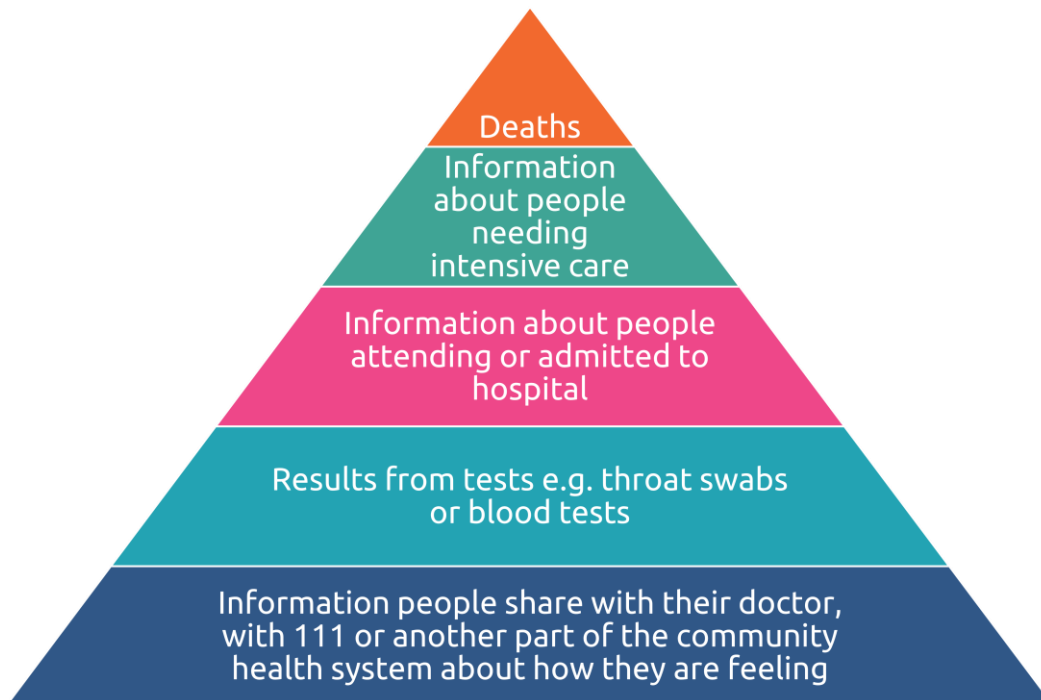
This report replaces the previously separate weekly reports on COVID-19, influenza and other respiratory infections. It is published on a weekly basis between week 40 (October) and 20 (May) of the following year, and on a fortnightly basis during the summer period.

This report summarises the latest available information from several Public Health Wales surveillance schemes, reports on Acute Respiratory Infections (ARI) and information from other sources.

Additional information is available from the links below.

- [Weekly ARI Hospital Admissions Dashboard](#)
- [EuroMOMO European mortality monitoring](#)
- [Public Health Wales Respiratory Infection Mortality updates](#)
- [COVID-19 variant summary](#)

The structure of this report is based on the surveillance pyramid (from mild to severe infection outcomes), illustrated below. Icons alongside chapter headings indicate the types of information included in the chapter.





## Table of Contents

Headline .....	1
Foreword .....	2
High Level Summary Points.....	4
1. Community surveillance indicators.....	5
2. Virological Surveillance .....	9
3. Severe Acute Respiratory Infection (SARI) and surveillance in hospitals.....	12
4. Settings-based surveillance and outbreaks.....	17
5. Mortality surveillance .....	19
6. Pathogen-specific surveillance .....	22
7. International Summary.....	25
8. Notes on interpretation.....	27
9. Statement of voluntary application of the Code of Practice for Statistics.....	28
10. Links to surveillance reports from other countries .....	29

## High Level Summary Points

	Community infection indicators	Severe infection indicators
<b>Overall Acute Respiratory Infection (ARI)</b>	<p>The 3-week trend in consultation rate per 100,000 for broader acute respiratory infection (ARI) is decreasing.</p> <p>Consultations with Sentinel GPs for acute respiratory infection (ARI) decreased from last week.</p>	<p>Admissions in patients testing positive for influenza, COVID-19 or RSV have decreased in the most recent week (1% of total admissions).</p>
<b>Influenza</b>	<p><b>Influenza is currently circulating and case numbers remain broadly stable. There remains potential for further increases in influenza B activity.</b></p> <p>The overall proportion of samples testing positive remained stable in the most recent week at 6.7%.</p> <p>Consultations for influenza-like illness (ILI) with sentinel GPs decreased and remain at baseline intensity. 60 cases of influenza were confirmed from symptomatic sentinel GP network patients across Wales last week.</p>	<p>The number of confirmed cases of community acquired influenza admitted to hospital decreased to 36 in the most recent week.</p> <p>In the most recent week, there were 93 in-patient cases of confirmed influenza, three of whom were in critical care.</p>
<b>Influenza type breakdown</b>	<p><b>Since 2024 Week 40:</b> 7,806 total influenza cases confirmed (424 influenza A(H3N2), 1,613 influenza A(H1N1)pdm09, 4,824 influenza A untyped and 945 influenza B).</p> <p><b>In the most recent week:</b> 11 confirmed cases of influenza A(H3N2), 6 cases of influenza A(H1N1)pdm09, 49 influenza A untyped and 94 influenza B)</p>	
<b>COVID-19</b>	<p>The overall proportion of samples testing positive remained stable at 5.0% in hospital and non-sentinel GP practices.</p> <p>Consultations with sentinel GPs for COVID-19 increased in the most recent week.</p>	<p>The number of confirmed cases of community acquired COVID-19 admitted to hospital decreased to 18 in the most recent week.</p> <p>In the most recent week, there were 167 in-patient cases of confirmed COVID-19, two of whom were in critical care.</p>
<b>RSV</b>	<p>RSV incidence in children aged up to 5y remains at baseline levels.</p> <p>Incidence per 100,000 population in children aged up to 5y decreased to 2.5 in the most recent week.</p>	<p>The number of confirmed cases of community acquired RSV admitted to hospital increased to 14 in the most recent week.</p> <p>In the most recent week, there were 54 in-patient cases of confirmed RSV, three were in critical care.</p>
<b>Other respiratory pathogens</b>	<p>Confirmed cases and test positivity for human metapneumovirus and adenovirus have increased compared to the previous week, while seasonal coronaviruses have remained broadly stable following earlier increases.</p>	



## 1. Community surveillance indicators

### GP Consultations

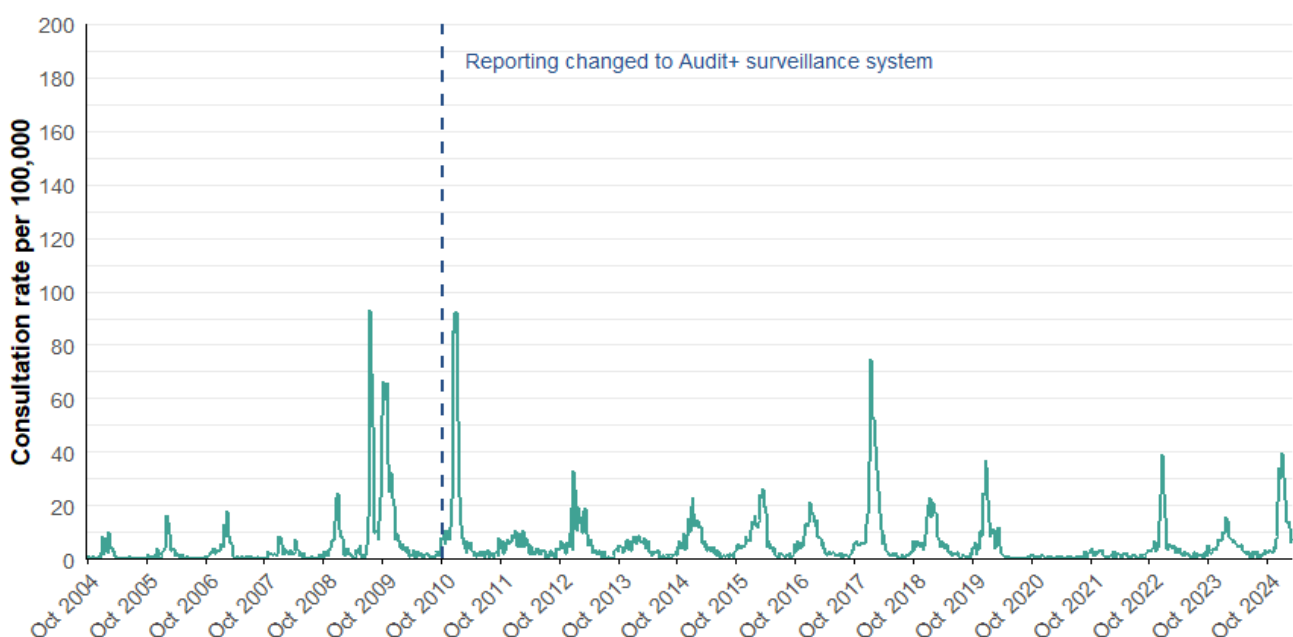
- The sentinel GP consultation rate for influenza-like illness (ILI) is at baseline and the three-week trend is variable (Figures 1.1, 1.2). Confirmed cases continue to be detected in symptomatic sentinel GP patients.
- There were 6.9 ILI consultations per 100,000 practice population in the most recent week, a decrease compared to the previous week (8.2 consultations per 100,000).
- In the most recent week, using all available data from general practices, there were 13.4 ARI consultations per 100,000 practice population, a decrease from 14.4 in the previous week (Table 1.2). The highest rates were found in people aged under 1 year (652.9) followed by people aged 1 to 4 (421.9) and people aged 75+ (162.5) (Figure 1.4).
- Surveillance indicators for acute respiratory infections in GP consultation data in Wales are decreasing in people aged under 5 years (Figure 1.4).

### Ambulance Calls

- The number of ambulance calls recorded referring to syndromic indicators decreased from 1,803 in the previous week to 1,764 in the latest reporting week (Figure 1.5, Table 1.3).
- Calls for cardiac or respiratory arrest, chest pain, difficulty breathing were stable or decreased compared to the previous week (Figure 1.5, Table 1.3).

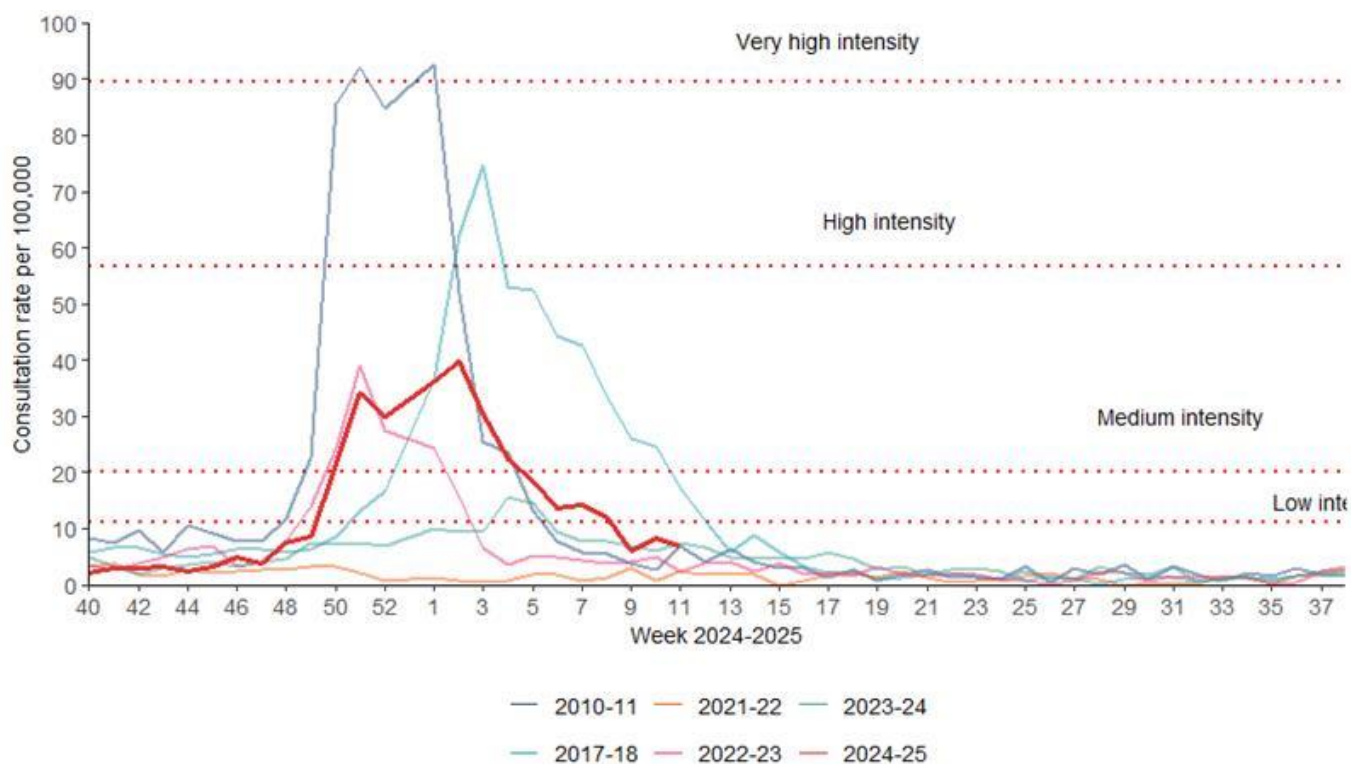
### GP consultations – Sentinel Network

**Figure 1.1.** Sentinel GP network clinical consultation rate for ILI per 100,000 practice population (Week 40 1996 - Week 11, 2025).



Data correct as of 18/03/2025

**Figure 1.2.** Sentinel GP network clinical consultation rate for ILI per 100,000 practice population.



Data correct as of 18/03/2025

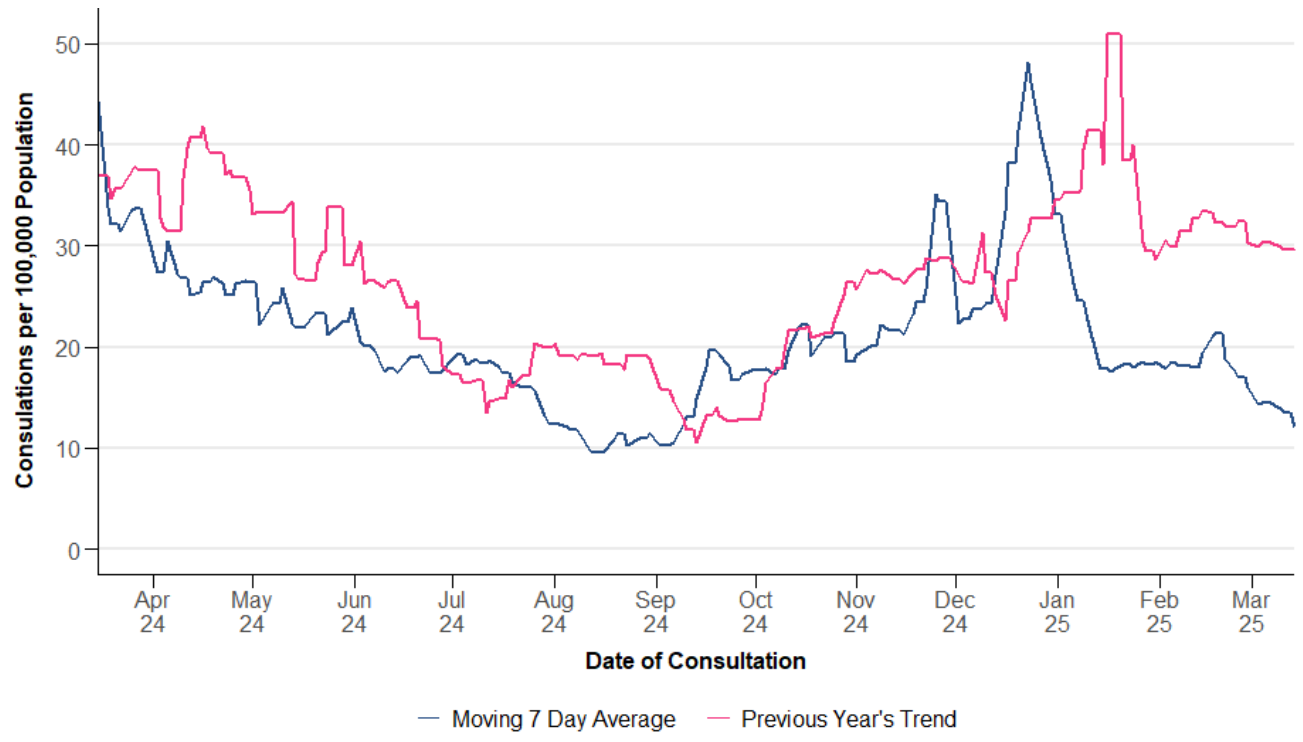
## GP Consultations - All Wales

**Table 1.2.** Summary of GP consultations per 100,000 practice population in Wales, by indicator, for Week 11, 2025. This table uses all available GP surveillance data (from sentinel and non-sentinel practices).

Indicator	Current Reporting Week	Preceding Week	Equivalent Period Last Year
ARI	13.43	14.42	30.25
COVID-19	3.27	0.11	0.23
LRTI	4.50	5.43	11.25
Pneumonia	0.01	0.01	0.08
Severe asthma	0.63	0.72	1.25
URTI	8.94	8.99	19.12
<b>Total</b>	<b>30.78</b>	<b>29.68</b>	<b>62.18</b>

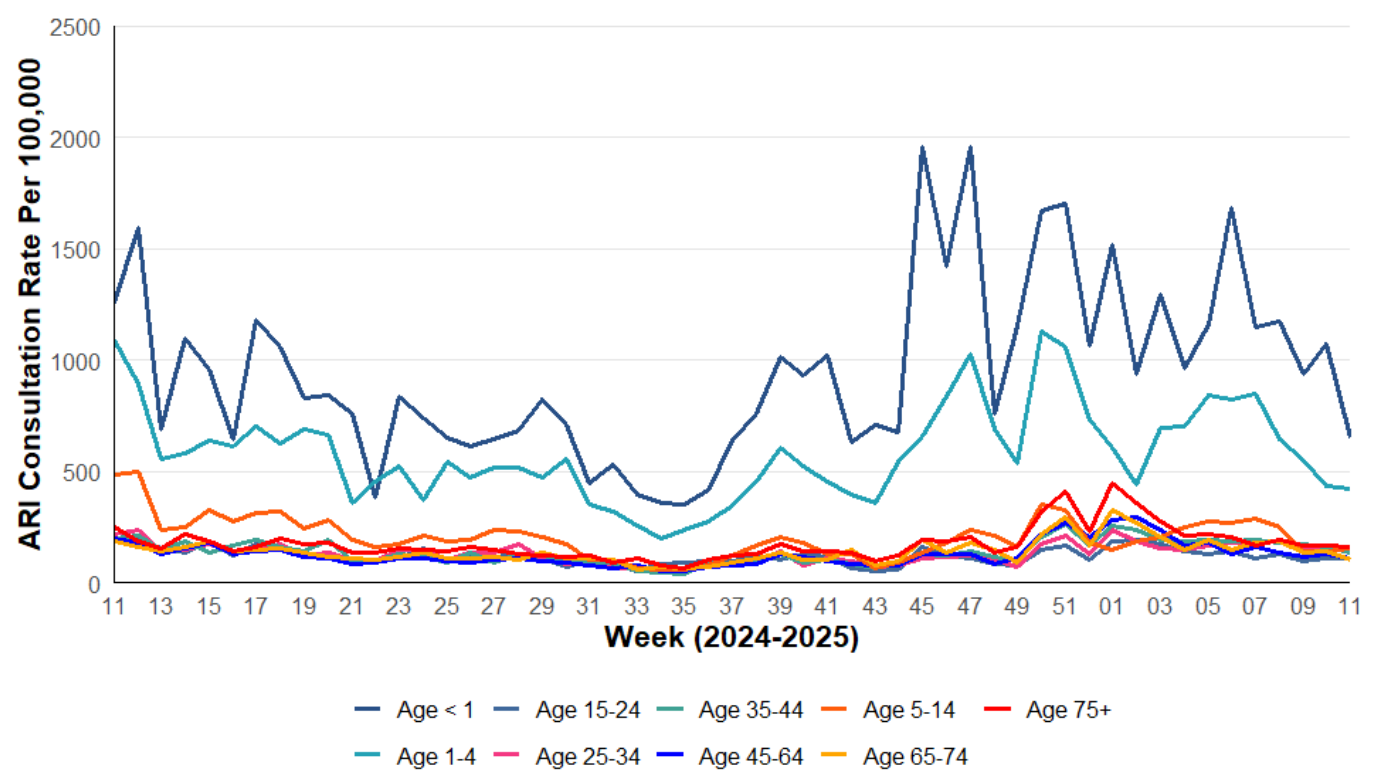
NB: "Current reporting week" refers to the average daily rate in the current reporting week. "Preceding week" refers to the average daily rate in the preceding week. "Equivalent period last year" refers to the average daily rate in the equivalent period last year.

**Figure 1.3.** All Wales GP consultation rates for ILI per 100,000 practice population for Acute Respiratory Infection (ARI).



Data correct as of 18/03/2025

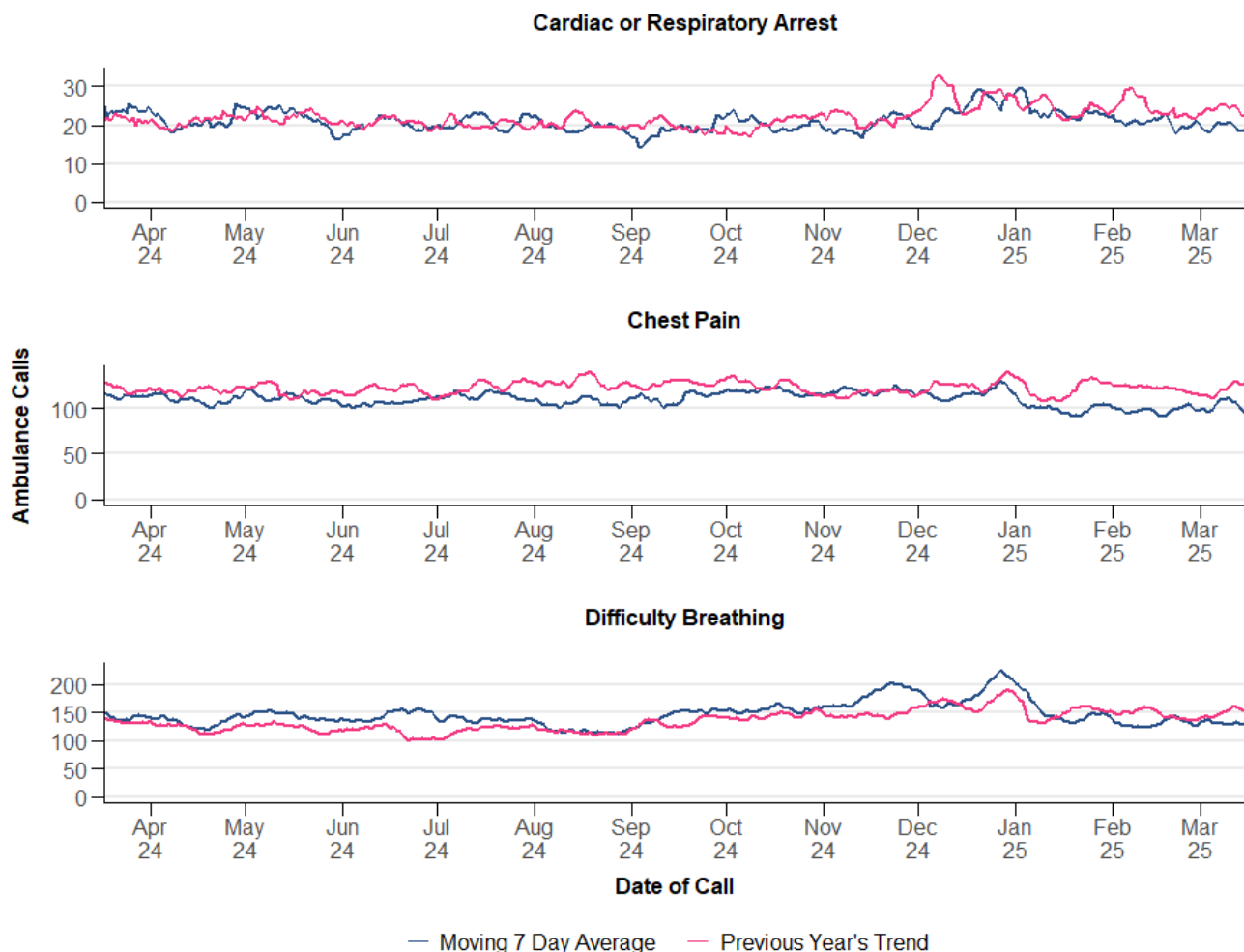
**Figure 1.4.** All Wales clinical consultation rates for Acute Respiratory Infection (ARI) per 100,000 practice population, by age bands.



Data correct as of 18/03/2025

## Ambulance Calls

**Figure 1.5.** Rolling seven-day average for ambulance calls for both current and the previous year, by symptom. This summary analysis uses data provided by the Welsh Ambulance Service NHS Trust.



Data correct as of 18/03/2025

**Table 1.3.** Summary of weekly number of Ambulance calls, by symptom in Wales, for Week 11, 2025. This summary analysis uses data provided by the Welsh Ambulance Service NHS Trust.

Indicator	Current Reporting Week	Preceding Week	Equivalent Period Last Year
Cardiac or Respiratory Arrest	128	145	172
Chest Pain	715	738	813
Difficulty Breathing	921	920	1,027
<b>Total</b>	<b>1,764</b>	<b>1,803</b>	<b>2,012</b>

NB: "Current reporting week" refers to the total number of calls in the current reporting week. "Preceding week" refers to the total number of calls in the preceding week. "Equivalent period last year" refers to the total number of calls in the equivalent period last year.



## 2. Virological Surveillance

### Wales Sentinel GP and Sentinel Community Pharmacy Network

- There were 359 surveillance samples from patients with ILI symptoms collected by sentinel GPs and community pharmacies during Week 11, 2025, as of 19/03/2025 (Table 2.1, Figure 2.1).
- The most commonly detected pathogens were influenza B (46) followed by rhinovirus (39) and human metapneumovirus (33). Of the 359 tests, 45.1% were negative for all respiratory pathogens (Table 2.1, Figure 2.1).

### All Wales Datastore Respiratory Infection Testing

- There were 1,019 samples receiving multiplex respiratory panel testing, collected from patients attending hospitals and non-sentinel GPs during Week 11 (Table 2.2, Figure 2.2).
- The most commonly detected pathogens were rhinovirus (79) followed by human metapneumovirus (71) and adenovirus (62). Of the 1019 tests, 63.9% were negative for all respiratory pathogens (Table 2.2, Figure 2.2).

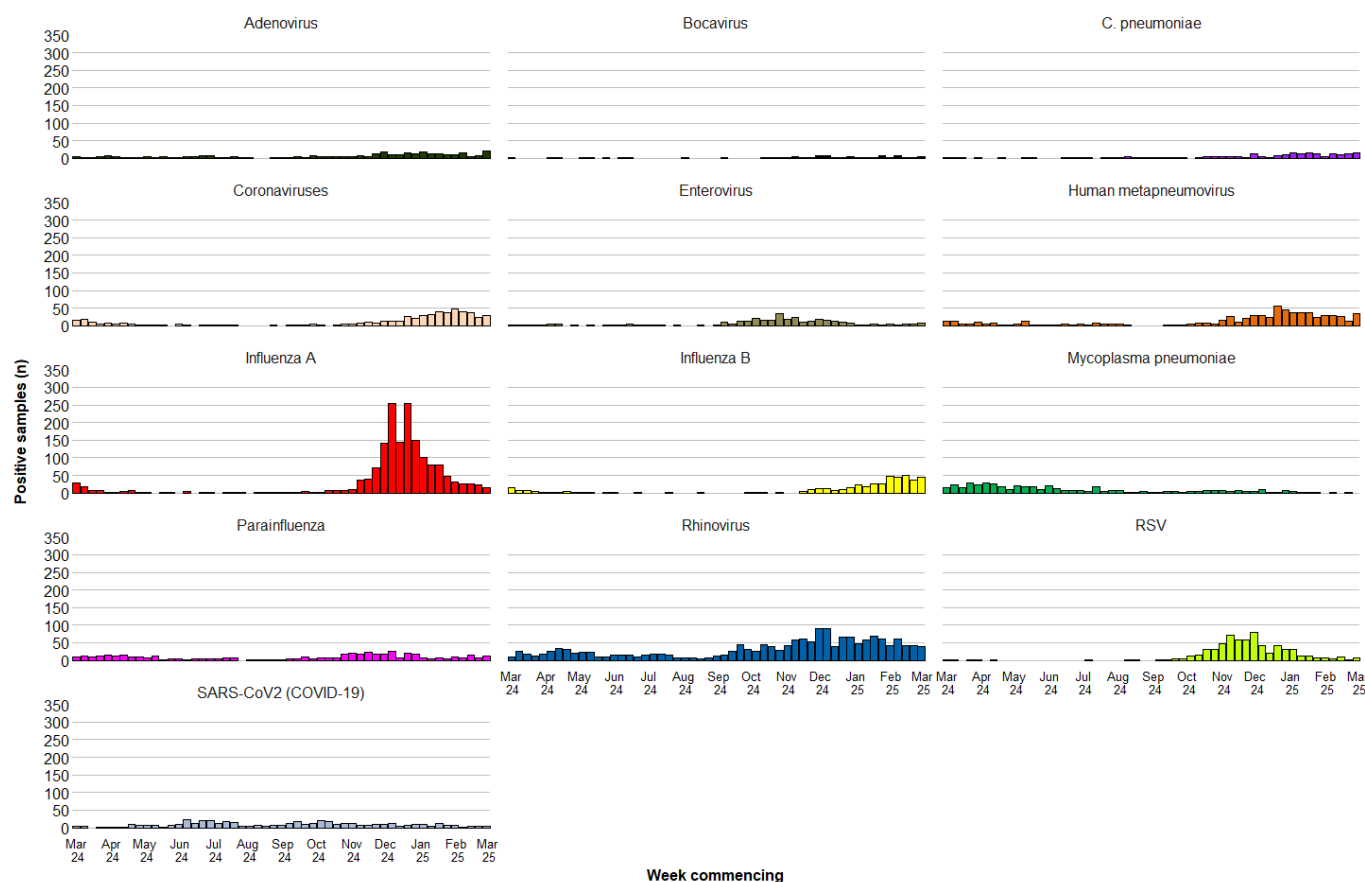
Additionally, during Week 11, 438 samples from patients were tested for influenza, RSV and SARS-CoV-2 only (Figure 2.3). Of these the following tested positive:

- 31 for influenza (20 for influenza A, 11 for influenza B)
- 40 for SARS-CoV-2 (COVID-19)
- 13 for RSV

**Table 2.1:** Pathogens detected, and sample positivity for samples from symptomatic patients from the Wales Sentinel GP and Sentinel Pharmacy networks, Week 11, 2025.

Pathogens Detected	Count (n)	Positivity (current week)	Positivity (previous week)	Trend
Influenza B	46	12.8%	10.0%	Increasing
Rhinovirus	39	10.9%	11.7%	Stable
Human metapneumovirus	33	9.2%	3.9%	Increasing
Coronaviruses	28	7.8%	6.7%	Increasing
Adenovirus	20	5.6%	1.9%	Increasing
C. pneumoniae	15	4.2%	3.6%	Stable
Influenza A	14	3.9%	6.1%	Decreasing
Parainfluenza	13	3.6%	1.7%	Increasing
Enterovirus	8	2.2%	1.1%	Increasing
RSV	7	1.9%	0.6%	Increasing
Bocavirus	4	1.1%	0.8%	Stable
SARS-CoV2 (COVID-19)	4	1.1%	1.1%	Stable
Mycoplasma pneumoniae	0	0.0%	0.3%	Stable

**Figure 2.1.** Pathogens detected in samples from symptomatic patients from the Wales Sentinel GP and Sentinel Pharmacy networks, by week of sample collection, Week 11, 2024 to Week 11, 2025.



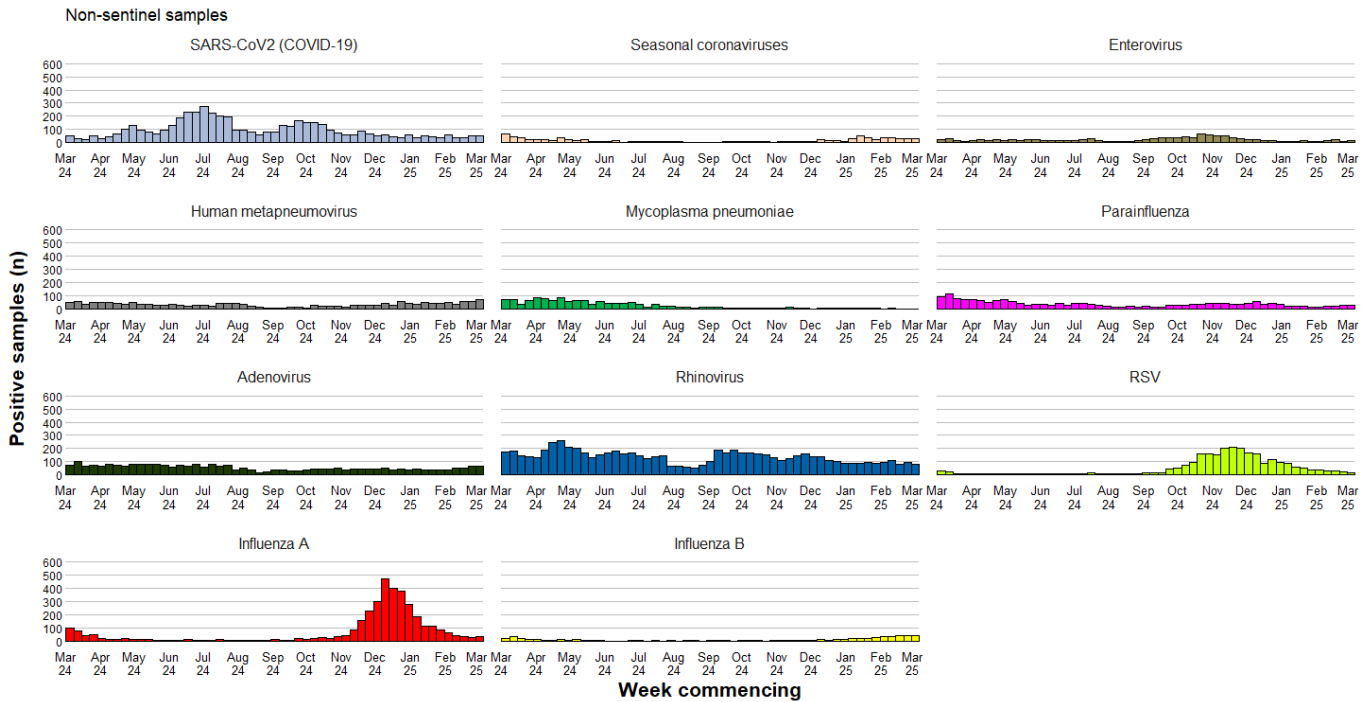
Data correct as of 19/03/2025

## All Wales Datastore Respiratory Infection Testing

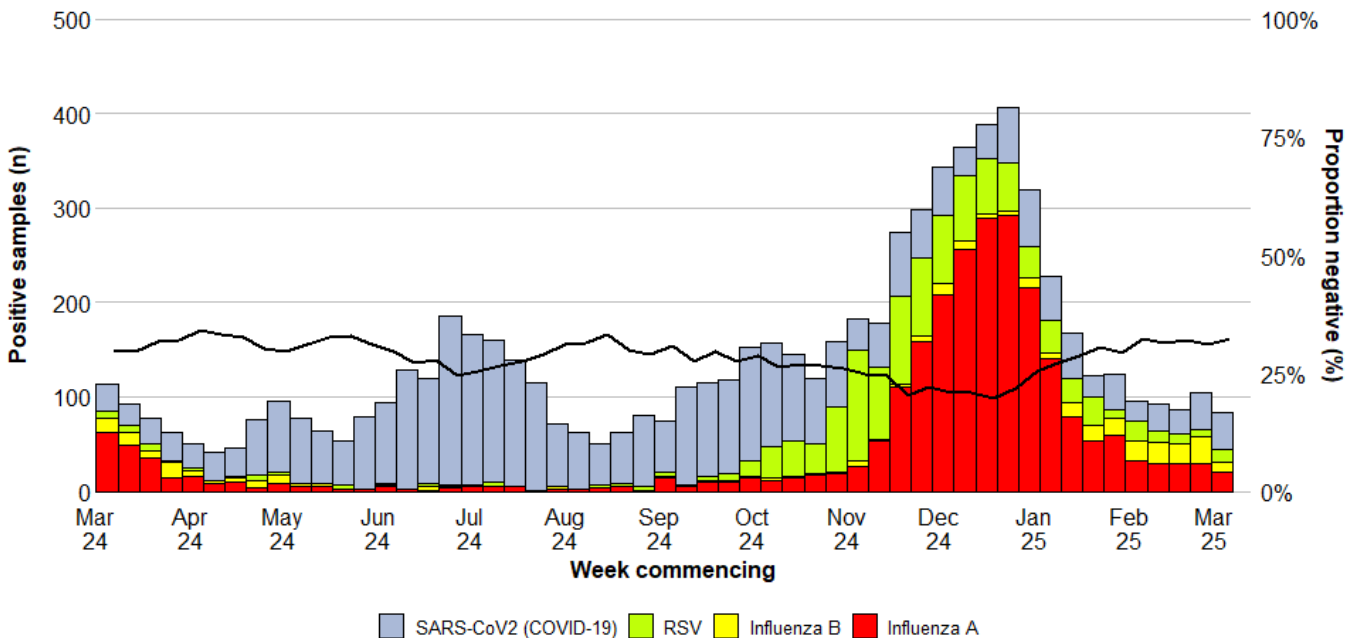
**Table 2.2:** Pathogens detected and sample positivity for samples collected from hospital and non-Sentinel GP patients, Week 11, 2025.

Pathogens Detected	Count (n)	Positivity (current week)	Positivity (previous week)	Trend
Rhinovirus	79	7.8%	9.5%	Decreasing
Human metapneumovirus	71	7.0%	5.5%	Increasing
Adenovirus	62	6.1%	6.4%	Stable
SARS-CoV2 (COVID-19)	51	5.0%	5.0%	Stable
Influenza B	37	3.6%	4.0%	Stable
Influenza A	32	3.1%	2.8%	Stable
Seasonal coronaviruses	31	3.0%	2.7%	Stable
Parainfluenza	28	2.7%	2.6%	Stable
RSV	16	1.6%	2.0%	Stable
Enterovirus	15	1.5%	1.0%	Stable
Mycoplasma pneumoniae	0	0.0%	0.0%	Stable
Bocavirus	0	0.0%	0.0%	Stable
Chlamydia	0	0.0%	0.0%	Stable

**Figure 2.2.** Pathogens detected in samples collected from hospital and non-Sentinel GP patients, by week of sample collection, Week 11, 2024 to Week 11, 2025.



**Figure 2.3.** Samples from hospital patients submitted for RSV, Influenza and SARS-CoV2 testing only, by week of sample collection, Week 11, 2024 to Week 11, 2025.





## 3. Severe Acute Respiratory Infection (SARI) and surveillance in hospitals

### Sentinel SARI in emergency departments

- During the previous four weeks there were 63 surveillance samples taken from SARI surveillance sentinel emergency departments. The most common pathogen identified from these samples was Rhinovirus/Enterovirus(13) followed by Influenza A(10) and Adenovirus(7). Of the 63 samples collected, 41.3% were negative for all respiratory pathogens (Table 3.1).
- During this time, the proportions of symptomatic patients attending sentinel emergency departments due to acute respiratory symptoms testing positive were 24% for influenza, 0% for SARS-CoV2 and 3% for RSV.

### Hospital in-patients

- During week ending 16/03/2025 there were 68 patients admitted to hospital with confirmed COVID-19, RSV or influenza, (10 less than the previous week), equating to 1% of all hospital admissions in that reporting week.
- At 23:59 on 16/03/2025, there were 314 patients in hospital with confirmed COVID-19, RSV or influenza, 12 less than the previous Sunday. This equates to 3% of all hospital in-patients (IPs) at that time. Of whom 75% (236) were hospital acquired (HA).

### Critical-care

- During week ending 16/03/2025 there were 6 ARI critical care (CC) admissions (the same number as the previous week), equating to 4% of all CC admissions in that reporting week.
- At 23:59 on 16/03/2025, there were 8 patients in CC with confirmed COVID-19, RSV or influenza, two more than the previous Sunday. This equates to 5% of all CC in-patients at that time. Of whom 50% (4) were hospital acquired (HA).

### Virological surveillance in ICU

- During Week 11, 2025, 36 respiratory samples were tested from patients in intensive care units (ICU). Of these: two tested positive for Influenza, one tested positive for SARS-CoV2 (COVID-19) and zero tested positive for RSV (Figure 3.4).

For detailed reports on surveillance of ARI in hospitals, including breakdowns by health board and age-group see: [Hospital admissions dashboard](#)

## Wales Sentinel SARI Emergency Department Network

**Table 3.1** Pathogens detected and sample positivity for samples collected from symptomatic patients presenting at participating SARI surveillance sentinel emergency departments, for Week 10, 2025.

Pathogens Detected	Meeting SARI case definition in the last 4 weeks		Meeting SARI case definition in the last 12 months	
	n	%	n	%
Adenovirus	7	11.1%	125	8.6%
C. pneumoniae	0	0.0%	1	0.1%
Human metapneumovirus	2	3.2%	35	2.4%
Influenza A	10	15.9%	84	5.8%
Influenza B	5	7.9%	20	1.4%
Mycoplasma pneumoniae	0	0.0%	43	3.0%
Parainfluenza	1	1.6%	54	3.7%
Pertussis	0	0.0%	13	0.9%
RSV	2	3.2%	140	9.7%
Rhinovirus/Enterovirus	13	20.6%	341	23.5%
SARS-CoV2 (COVID-19)	0	0.0%	79	5.5%
Seasonal coronaviruses	0	0.0%	16	1.1%
Negative	26	41.3%	650	44.9%
<b>Total</b>	<b>63</b>	<b>100%</b>	<b>1,521</b>	<b>100%</b>

**Figure 3.1** Pathogens detected in samples collected from symptomatic patients presenting at participating SARI surveillance sentinel emergency departments, for Week 10, 2025 and previous 12 months.



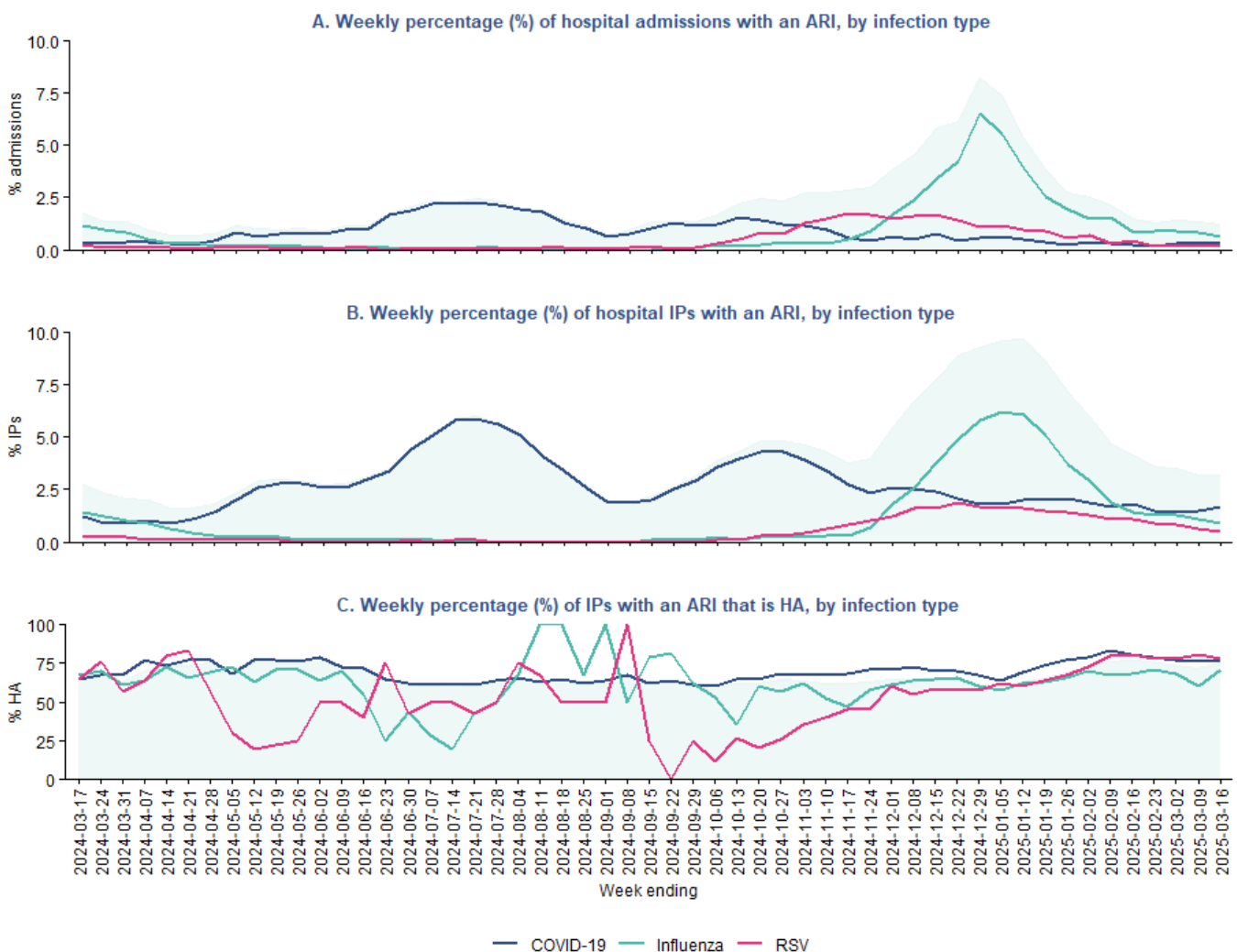
Data correct as of 13/03/2025

## Acute Respiratory Infection Surveillance in Hospital In-Patients

**Table 3.2.** Hospital admissions in patients confirmed **with** COVID-19, influenza and RSV (acute respiratory infection may not necessarily be the primary cause of admission).

Infection	Hospital admissions		Hospital In-patients		
	Count	% of all admissions	Count	% of all IPs	% HA (n)
<b>COVID-19</b>	18	<1%	167	2%	77% (128)
<b>Influenza</b>	36	1%	93	1%	71% (66)
<b>RSV</b>	14	<1%	54	0%	78% (42)
<b>ARI total</b>	<b>68</b>	<b>1%</b>	<b>314</b>	<b>3%</b>	<b>75% (236)</b>

**Figure 3.2.** (A) Weekly percentage of hospital admissions where influenza, COVID-19 or RSV was confirmed. (B) Weekly percentage of total in-patients where influenza, COVID-19 or RSV was confirmed. (C) Weekly percentage of total number of in-patients with confirmed COVID-19, influenza or RSV where the infection was healthcare acquired.



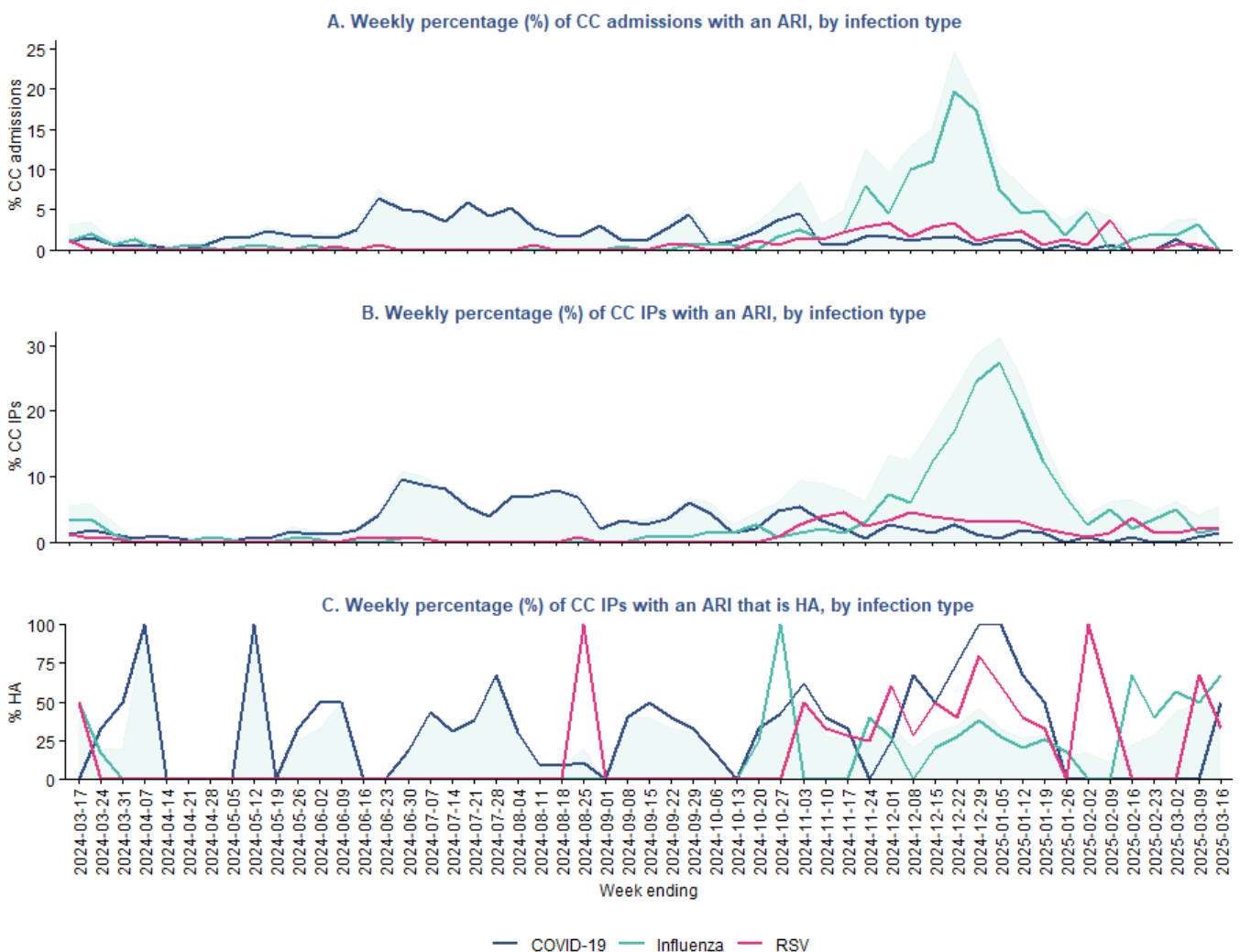
Data as of: 19-03-2025

## Acute Respiratory Infection Surveillance in Critical-Care In-Patients

**Table 3.3.** Critical care (CC) admissions in patients confirmed with COVID-19, influenza and RSV (acute respiratory infection may not necessarily be the primary cause of admission).

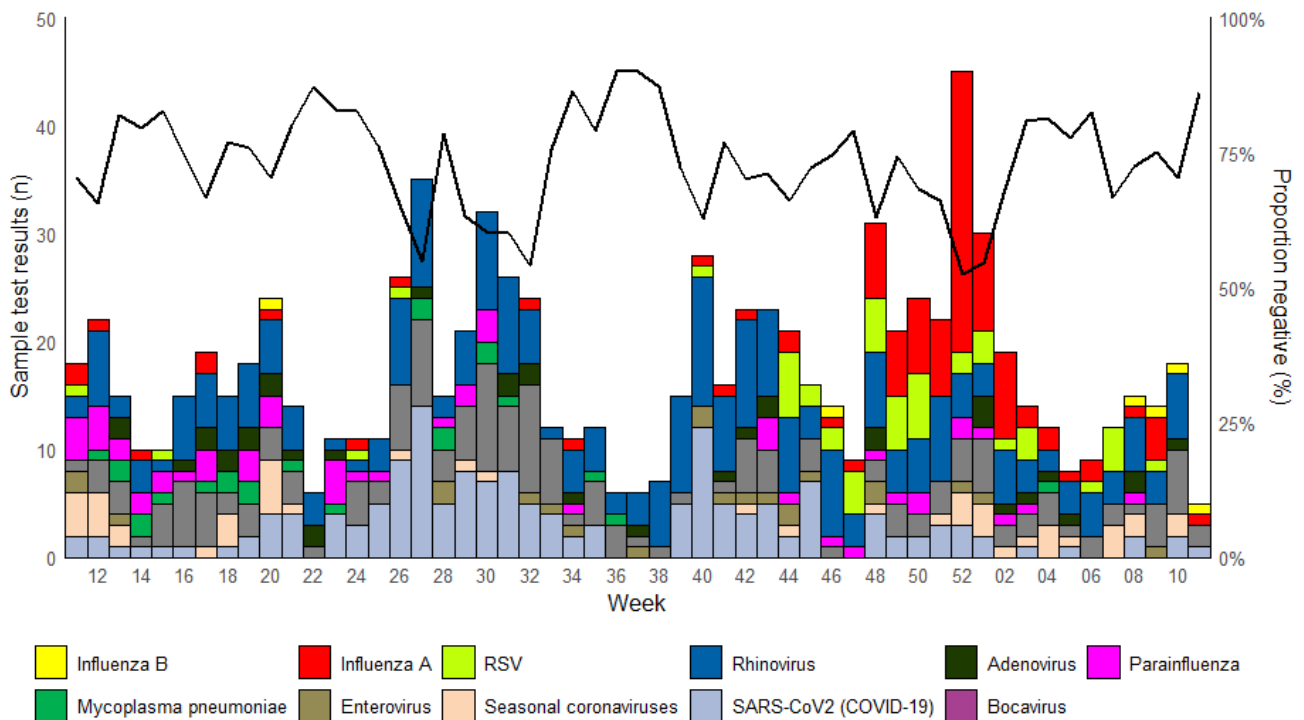
Infection	CC admissions		CC In-patients		
	Count	% of all CC admissions	Count	% of all CC In-patients	% HA (n)
COVID-19	0	0%	2	1%	50% (1)
Influenza	5	3%	3	2%	67% (2)
RSV	1	1%	3	2%	33% (1)
<b>ARI total</b>	<b>6</b>	<b>4%</b>	<b>8</b>	<b>5%</b>	<b>50% (4)</b>

**Figure 3.3.** (A) Weekly percentage of critical-care admissions where influenza, COVID-19 or RSV was confirmed. (B) Weekly percentage of total critical-care inpatients where influenza, COVID-19 or RSV was confirmed. (C) Weekly percentage of total number of critical-care inpatients with confirmed COVID-19, influenza or RSV where the infection was healthcare acquired.



Data as of: 19-03-2025

**Figure 3.4.** Samples submitted for virological testing from ICU patients, by week of sample collection, Week 11, 2024 to Week 11, 2025. The black line indicates the percentage of samples which tested negative for any of the pathogens listed.



Data correct as of 17/03/2025

## 4. Settings-based surveillance and outbreaks

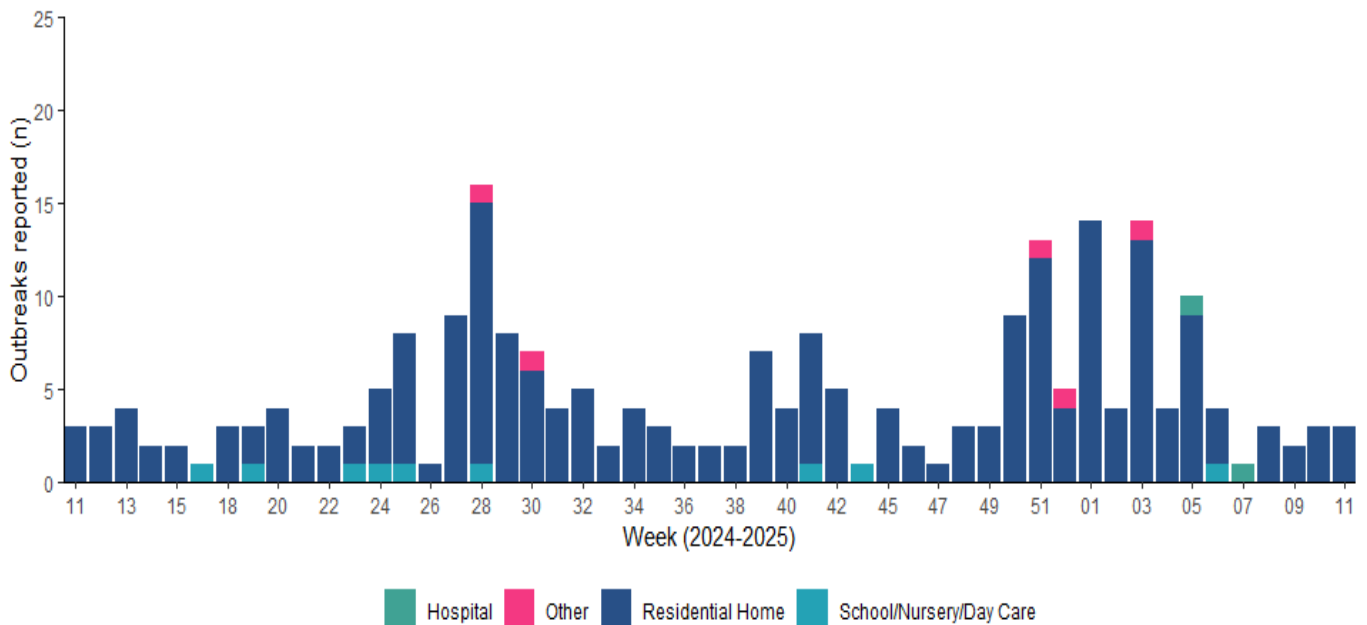
### Acute Respiratory Infection Outbreaks Reported to Public Health Wales Health Protection Team

During Week 11, 2025, 3 ARI outbreaks were reported to the Public Health Wales Health Protection Team.

Of these:

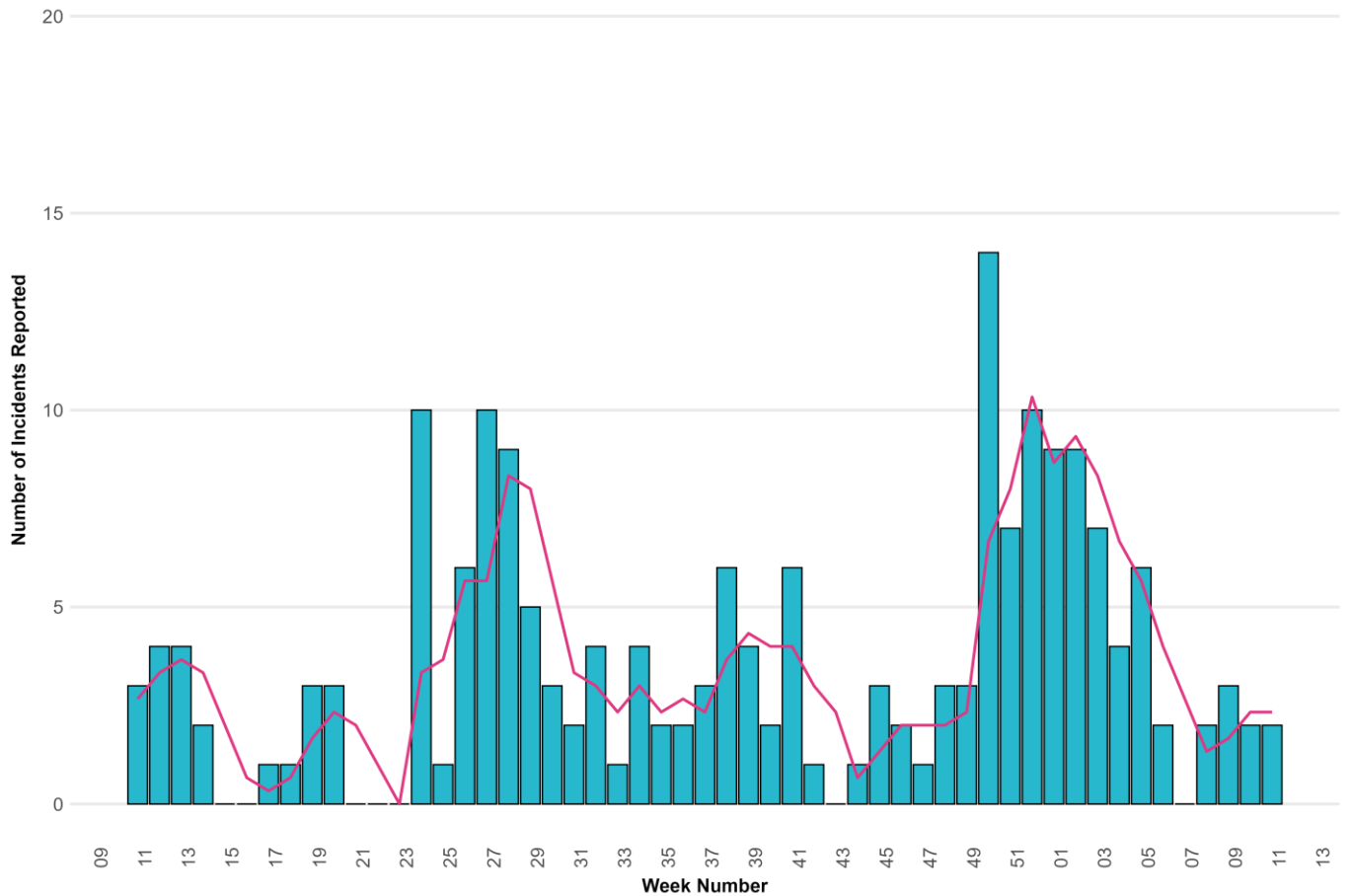
- One was Influenza A, and two were Respiratory
- All three were in Residential Homes

**Figure 4.1.** ARI outbreaks and incidents reported to Public Health Wales Health Protection Team, by setting and week of report. Completeness of reporting for outbreaks and incidents from schools/nurseries and other community settings is unknown.



Data correct as of 17/03/2025

**Figure 4.2.** ARI outbreaks and incidents reported to Public Health Wales Health Protection Team, from residential care home settings, by week of onset of first case. The three-week rolling average is shown in pink.



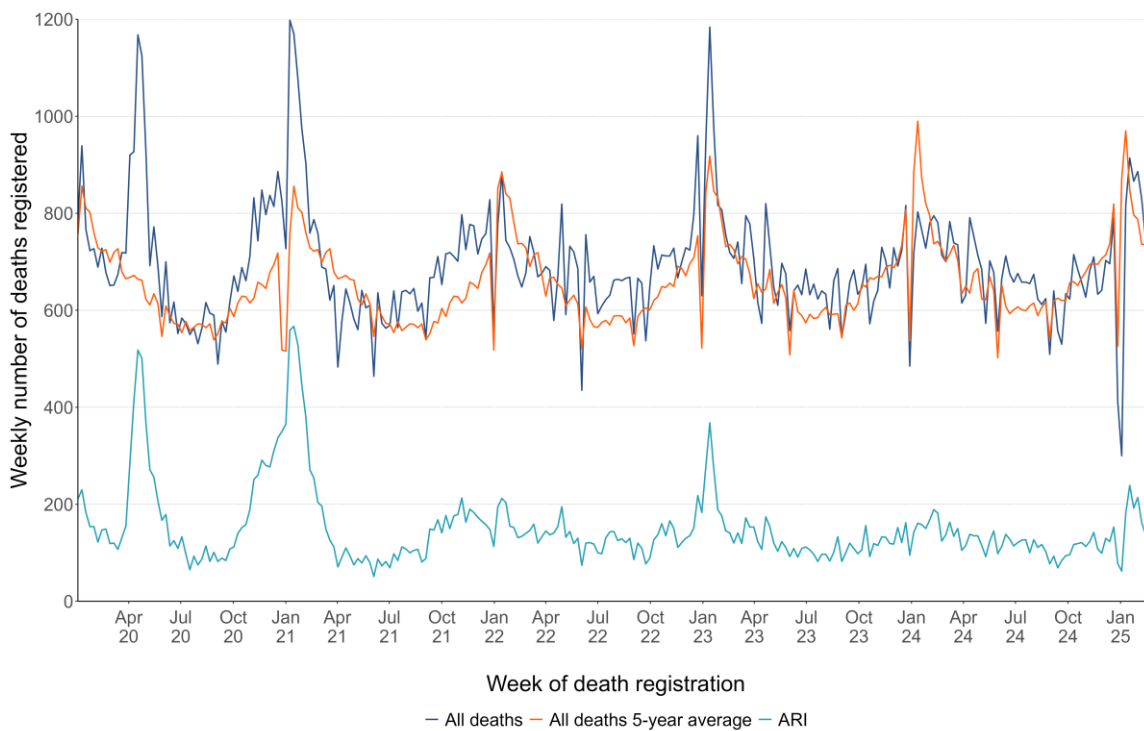
Data as at 2025-03-17



## 5. Mortality surveillance

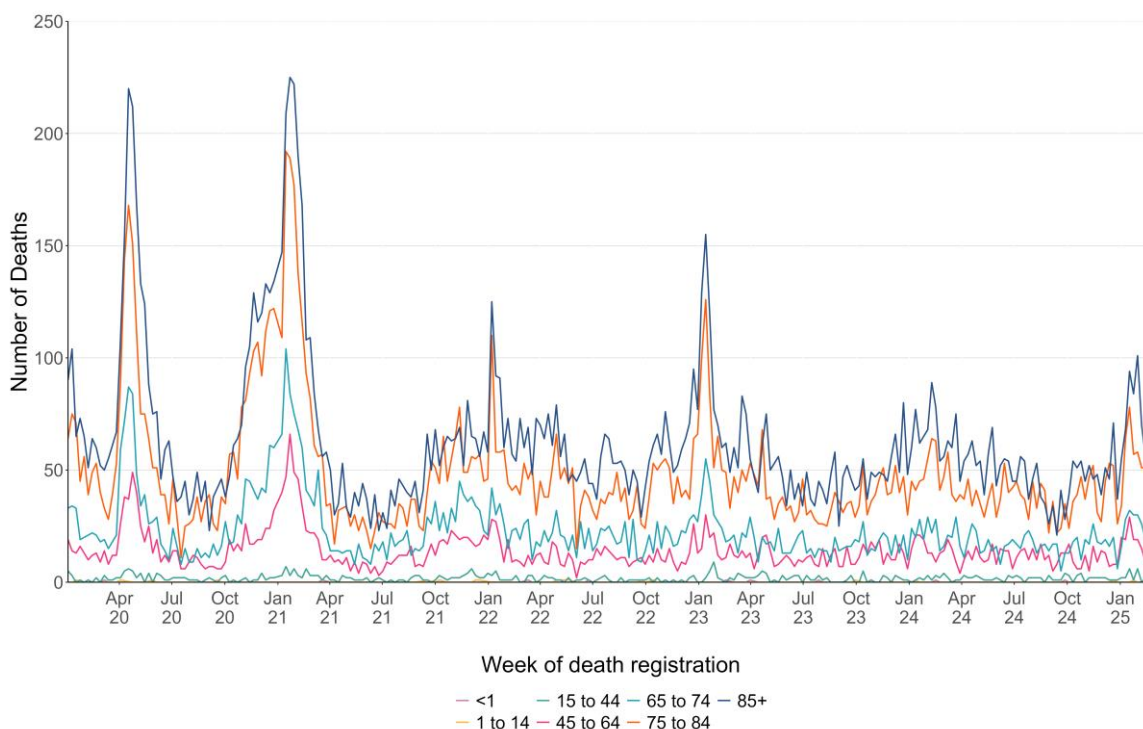
- Thus far this season, according to European Mortality Monitoring (EuroMoMo) methods, no substantial excess has been reported in the weekly number of deaths from all causes in Wales.
- Breakdowns of all-cause and ARI specific mortality, according to data from deaths registrations provided by the Office for National Statistics are summarised by week, age-group, setting of death and deprivation quintile of residence in Figures 5.2 to 5.4. Data for the most recent weeks in these summaries should be interpreted with caution due to potential reporting delays.
- Deaths relating to ARI have been defined using the following ICD10 codes: (J09-J22, J80, U07.1, U07.2 and J04)

**Figure 5.1.** Number of deaths registered (any cause), 5-year average (any cause) and deaths relating to ARI, by week of death registration.



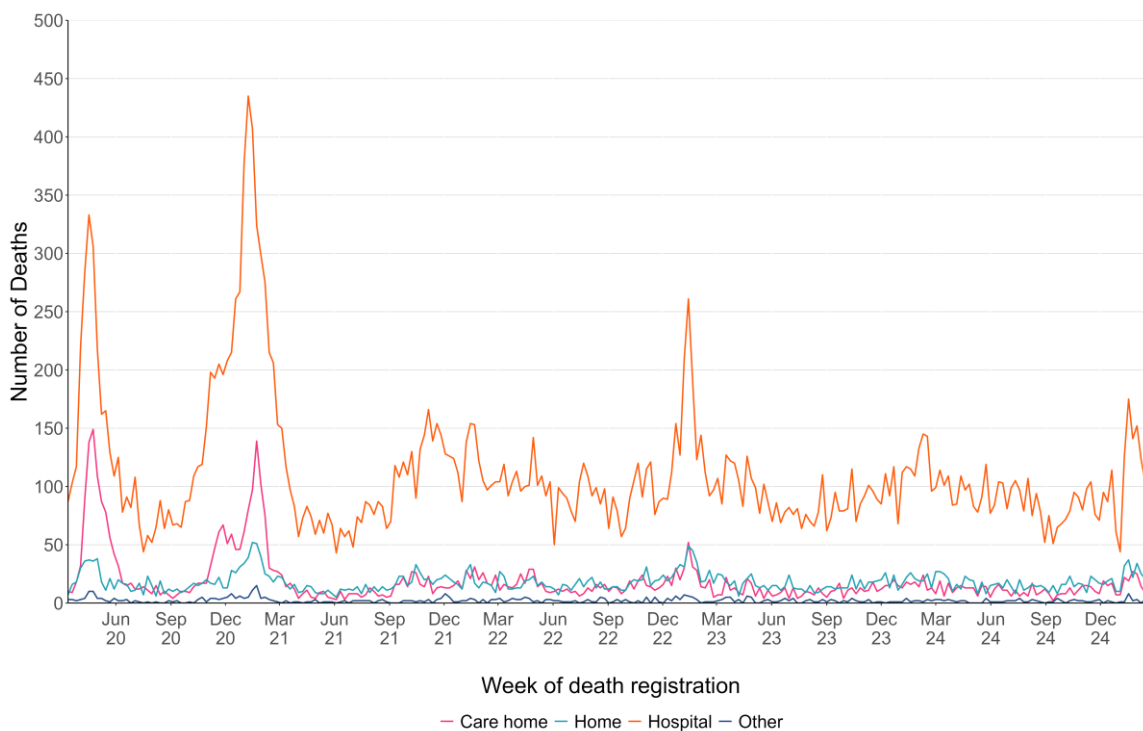
Data as of 18/03/2025

**Figure 5.2** Numbers of ARI related deaths by age-group and week of death registration.



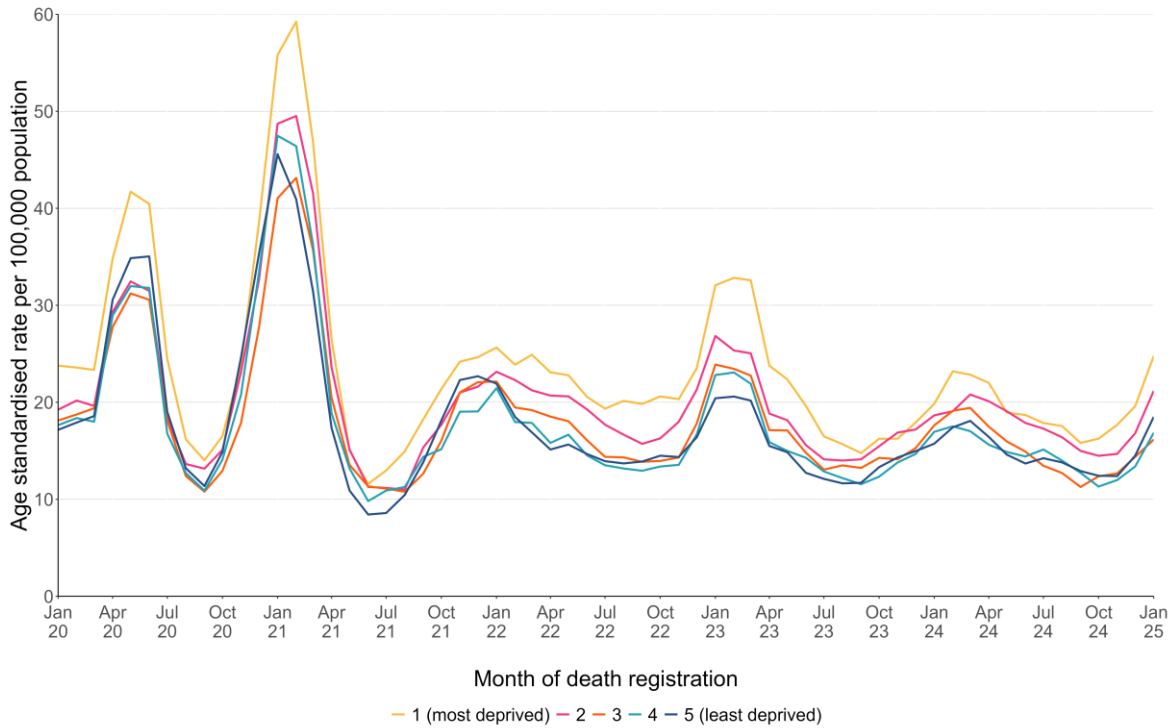
Data as of 18/03/2025

**Figure 5.3.** Numbers of deaths due to ARI, by place of death and week of death registration.



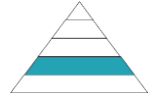
Data as of 18/03/2025

**Figure 5.4.** Numbers of ARI deaths, by quintile of deprivation of area of residence (based on the Welsh Index of Multiple Deprivation rankings of Lower Super Output Areas) and week of death registration.



Data as of 18/03/2025

For interactive versions of these data, including health board specific breakdowns, see: [ONS mortality dashboard](#)

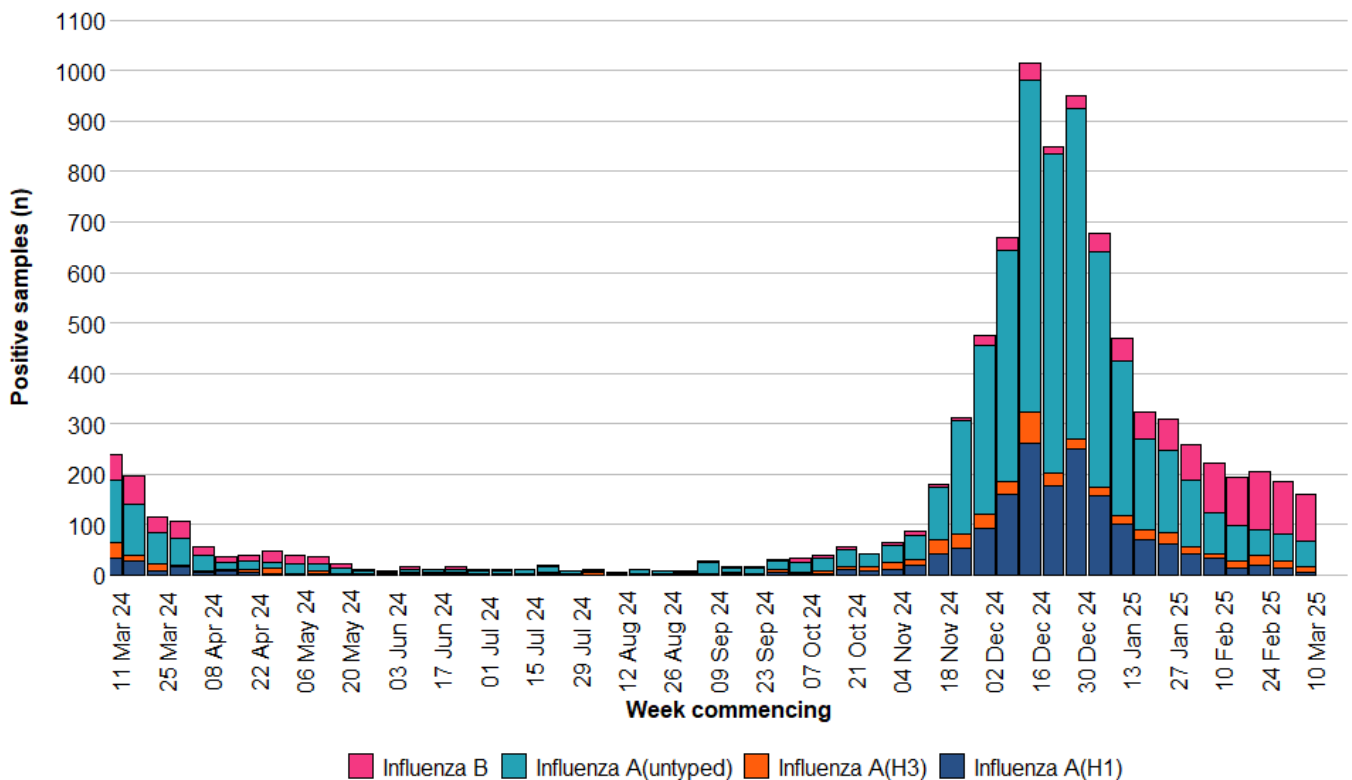


## 6. Pathogen-specific surveillance

### Influenza

- Influenza A(H1N1) is the most commonly detected influenza subtype in Wales since Week 40 2024 (1,613 confirmed cases), followed by influenza B (945 confirmed cases) and influenza A(H3N2) (424 confirmed cases). Additionally, there have been 4,824 untyped Influenza A cases.

**Figure 6.1.** Influenza subtypes based on samples submitted for virological testing by Sentinel GPs and community pharmacies, hospital patients, and non-Sentinel GPs, by week of sample collection, Week 11, 2024 to Week 11, 2025.

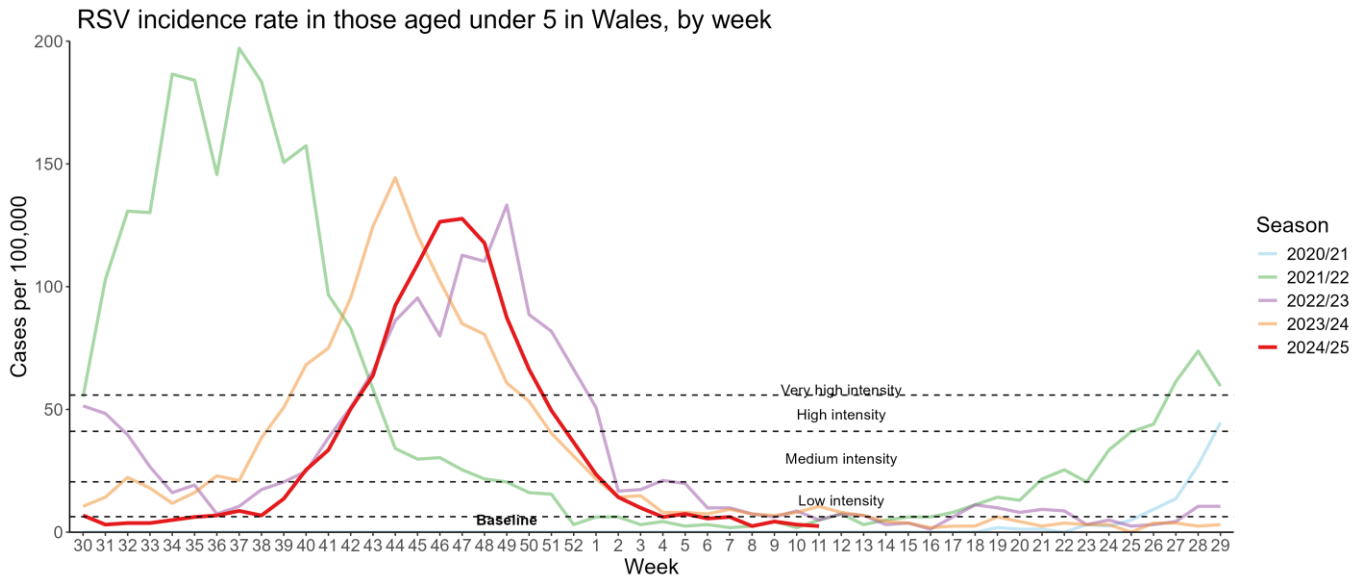


Data correct as of 17/03/2025

## Respiratory Syncytial Virus (RSV)

- RSV incidence per 100,000 population in children aged under five years is currently at baseline (2.5) intensity levels per 100,000 population during week 11 2025.

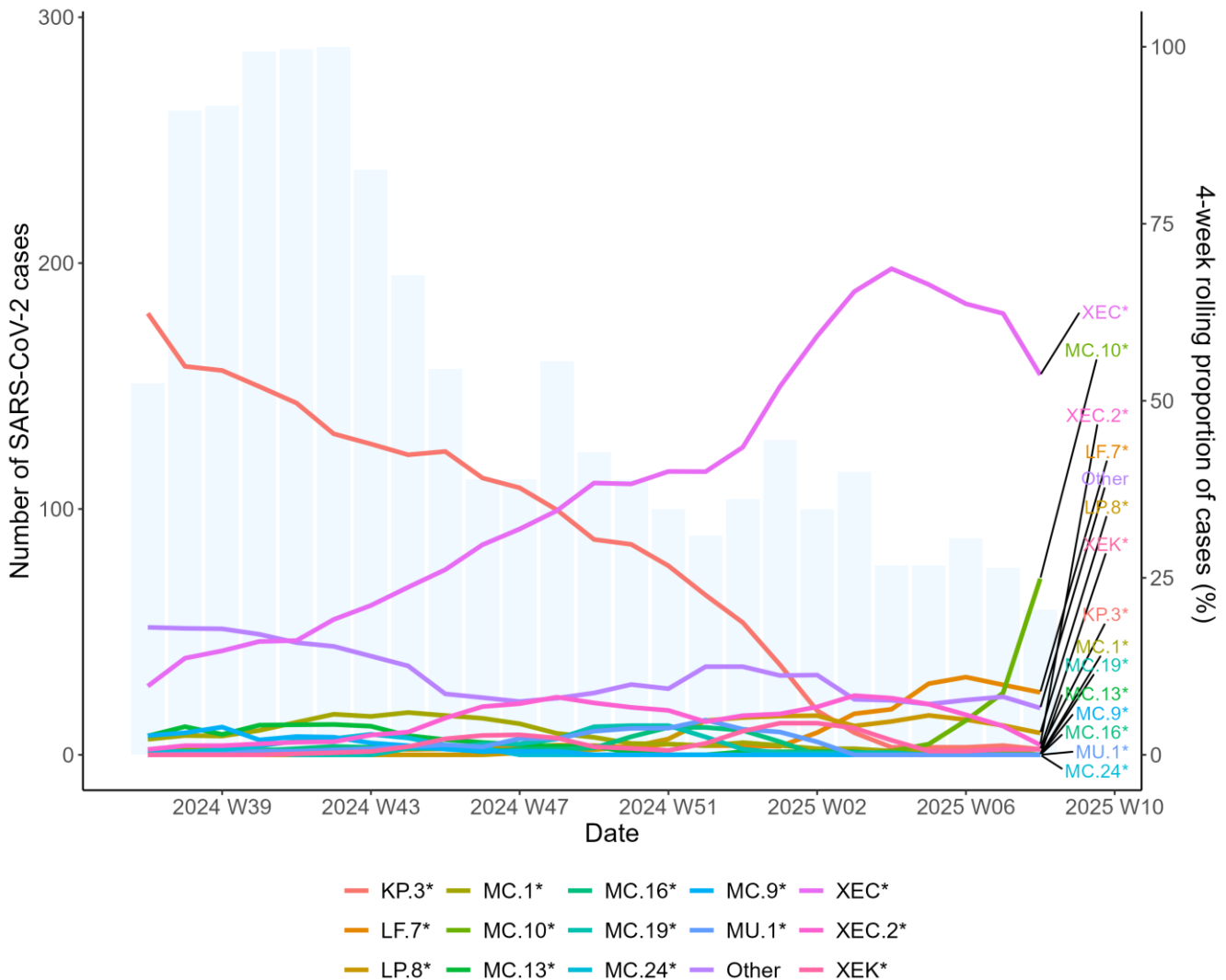
**Figure 6.2.** RSV incidence rate per 100,000 population aged under five years, Week 30, 2020 to Week 11, 2025.



## SARS-CoV-2 Variant surveillance

- Pango group XEC\* is the most frequently detected variant in Wales currently, accounting for 62.1% of sequenced cases in the previous six weeks.

**Figure 6.3.** Weekly number of SARS-CoV-2 cases (bars) and the 4-week rolling average proportion of sequenced cases attributed to each Pango lineage group (lines) from residents in Wales for the past six months (Week 38, 2024 to Week 10, 2025).



For detailed information on genomic surveillance of SARS-CoV-2 in Wales, please see: <https://public.tableau.com/app/profile/public.health.wales.health.protection/viz/COVID-19genomicsurveillance/Summary>

## 7. International Summary

### Influenza activity – UK and international summary

- As of Week 10, GP ILI consultations decreased to 7.8 per 100,000 in England, decreased in Northern Ireland to 7.6 per 100,000 and decreased to 8.9 per 100,000 in Scotland.
- No new data has been provided for England as of Week 10. During Week 9, 6,125 samples tested for influenza were reported in England of which 544 were positive for influenza (163 influenza A (not subtyped), 48 influenza A (H3N2), 61 influenza A (H1N1)pdm09, and 272 influenza B). Overall influenza positivity decreased to 8.9% in England in Week 9, and in Week 10 increased to 10.0% in Northern Ireland and decreased to 24.5% in Scotland.  
UK summary data are available from the [UKHSA Influenza and COVID-19 Surveillance Report, Respiratory surveillance report | HSC Public Health Agency](#) and [COVID-19 & Respiratory Surveillance \(shinyapps.io\)](#)
- The WHO and the European Centre for Disease Prevention and Control (ECDC) reported during Week 10, that influenza positivity is above the 10% positivity epidemic threshold at 35%. Of the 35 countries and areas reporting on influenza intensity, 24 reported medium intensity or higher. Of the 34 countries and areas reporting on geographic spread of influenza viruses within a country or area, 31 reported widespread or regional distribution. There were 1,424 confirmed influenza virus infection detections reported from sentinel primary care. **Source:** European Respiratory Virus Surveillance Summary (ERVISS): <https://erviss.org/>
- In the Northern hemisphere, activity remained elevated in North America (predominantly A(H1N1)pdm09), Central America and Caribbean and Tropical South America (predominantly A(H1N1)pdm09 and A(H3N2), Northern and Western Africa (predominantly A(H1N1)pdm09), all of Europe (all seasonal subtypes); Central (predominantly B), Western (predominantly A(H3N2)), Southern (all seasonal subtypes), South-East (predominantly A(H1N1)pdm09 and B) and Eastern Asia (predominantly A(H1N1)pdm09). Activity increased in a few countries in Central America and Caribbean, Western Asia, and Europe.
- In the Southern hemisphere, elevated activity was observed in single countries in Eastern Africa and South-East Asia (predominantly A(H1N1)pdm09 and B) and multiple countries in Oceania (predominantly A(H1N1)pdm09). Overall, activity remained the low. **Source:** WHO influenza update: <https://www.who.int/teams/global-influenza-programme/surveillance-and-monitoring/influenza-updates/current-influenza-update>
- Based on FluNet reporting (as of 18/03/2025), during Week 10, globally there were 6,108 A(H1N1), 2,229 A(H3), 15,732 A(not subtyped), 771 influenza B (Victoria) and 9,518 influenza B (lineage not determined) **Source:** Flu Net: <flunetchart>

### Update on influenza activity in North America

- The USA Centers for Disease Control and Prevention (CDC) report that influenza activity levels remain elevated during Week 10 but has decreased for four consecutive weeks (ending 08/03/2025). Nationally, 16,027 (16.1%) out of 99,634 specimens have tested positive for influenza in clinical laboratories nationwide, of these positive samples, 12,742 (79.5%) were influenza A and 3,285 (20.5%) were influenza B. Further characterisation has been carried out on 3,264 specimens by public health laboratories, and 2,363 samples tested positive for influenza; 1,062 influenza A(H1N1)pdm09, 782 influenza A(H3N2), 390 influenza A(not subtyped), zero influenza H5, and 129 influenza B. **Source:** CDC Weekly US Influenza Surveillance Report: [FluView | FluView | CDC](#)

- The Public Health Agency of Canada reported that during Week 10, influenza activity is decreasing. 10,026 influenza detections were reported: 8,820 influenza A and 1,206 influenza B. Source: <https://health-infobase.canada.ca/respiratory-virus-surveillance/>

## Respiratory syncytial virus (RSV) in North America

The USA CDC reported that the RSV positivity rate remained stable in Week 10.

**Source:** CDC RSV national trends: [National Respiratory and Enteric Virus Surveillance System | CDC](#)

## Middle East respiratory syndrome coronavirus (MERS-CoV) – latest update from WHO and ECDC

- As of 13 March 2025, Saudi Arabia reported four MERS-CoV cases from 6 September 2024 to 28 February 2025, including 2 deaths. WHO Global Alert and Response website: <https://www.who.int/emergencies/disease-outbreak-news>
- Rapid risk assessments of the situation from ECDC, which contain epidemiological updates and advice for travellers and healthcare workers, are available from: <https://ecdc.europa.eu/en/middle-east-respiratory-syndrome-coronavirus>
- Further updates and advice for healthcare workers and travellers are available from WHO: <http://www.who.int/emergencies/mers-cov/en/> and from NaTHNaC: <https://travelhealthpro.org.uk/news/237/mers-cov-update-travelhealthpro-country-pages>

## Human infection with avian influenza A

- The WHO has published an updated assessment of recent influenza A(H5N1) virus events in animals and people. Currently, the global public health risk of influenza A(H5N1) viruses to be low, while the risk of infection for occupationally exposed persons is low to moderate, depending on the risk mitigation measures in place. Transmission between animals continues to occur and, to date, a growing yet still limited number of human infections are being reported. 20 December 2024:  
Other updates on zoonotic influenza infections and risks to humans are available from the WHO Global Alert & Response website: <https://www.who.int/emergencies/disease-outbreak-news>

## 8. Notes on interpretation

**Hospital/critical care (CC) admission:** A hospital/CC admission that involves a minimum of 1 overnight stay. N.B. Transfers to another hospitals within the same health board (HB) are counted as the same continuous inpatient stay.

**ARI hospital/CC admission:** A hospital/CC admission where the patient tested positive for an ARI infection in the community within 28 days prior to the admission date or in hospital up to 2 days after admission (where the date of admission is day 1).

**Hospital/CC inpatient (IP):** A patient admitted to hospital/CC on or before the specified date, with a minimum of 1 overnight stay who had not been discharged from hospital/CC by 23:59 of the specified date.

**ARI hospital/CC IP:** A hospital/CC IP who tested positive for an ARI in hospital or in the community within the previous 28 days. Hospital acquired (HA): An IP whose first positive ARI test was taken in hospital more than 7 days after admission for COVID-19 or more than 3 days after admission for Influenza and RSV.

**ARI outbreaks and incidents in a care home setting (Fig 4.2):** Information about incidents and outbreaks is taken from the case management system used by Public Health Wales. An incident in this context refers to the way that information is recorded and organised on the case management system. Not all acute respiratory infections affecting two or more care home residents with a common exposure (an outbreak\*) will be recorded as incidents and captured in this graph. This may be because there was not a need for ongoing public health advice and therefore a different type of record was created. As a result, certain infections (e.g. influenza) may be captured more than others and the actual number of ARI outbreaks is likely to be underestimated. Figure 4.2 is therefore most useful for telling us about trends in the number of incidents over time, although trends may be affected both by changes in testing policy and by changes in how the incident management system is used. We will continue to review the impact of such changes and update our methodology or caveats as appropriate. Note that this definition is one of the traditional or epidemiological definitions of an outbreak, not all outbreaks will result in formally activating The Communicable Disease Outbreak Plan for Wales <https://phw.nhs.wales/topics/the-communicable-disease-outbreak-plan-for-wales>

## 9. Statement of voluntary application of the Code of Practice for Statistics

The Communicable Disease Surveillance Centre in Public Health Wales publishes a weekly integrated respiratory infection summary. This report highlights the latest available information from a number of Public Health Wales surveillance schemes, reports and other sources on Acute Respiratory Infections (ARI) in Wales.

Our publications are categorised as management information and this statement outlines the steps taken towards voluntary adoption of the Code of Practice for Statistics to ensure that our publications are high quality, useful for supporting decisions and well-respected. The code is built around 3 pillars:

- **Trustworthiness:** confidence in the people and organisations that produce statistics and data
- **Quality:** data and methods that produce assured statistics
- **Value:** publishing statistics that support society's needs for information

### Trustworthiness

This report (and the underlying analysis) has been developed by a team of epidemiologists and analysts under the guidance of senior scientists and consultants. We work as part of a wider integrated respiratory surveillance group, which brings together expertise in virology, epidemiology, genomics and surveillance. Key information summarised in this surveillance report is routinely shared with UK Health Security Agency (UKHSA), World Health Organisation (WHO) and other international networks to enable international surveillance and epidemiological studies. Appropriate disclosure control methods have been considered and applied.

The report is published on a weekly basis during winter period between week 40 (October) and 20 (May) of the following year and on a fortnightly basis during the summer period. Where there are interruptions to data flows, or other technical issues affecting the production of elements of the report, we highlight in the text as appropriate. Where there are unplanned delays to publication we inform our stakeholders. We highlight key changes in the report when necessary.

### Quality

We are continuously seeking to improve the quality of our surveillance. Where possible, ARI surveillance schemes in Wales follow, or are working towards following, good practice recommendations and international guidance (e.g. the [WHO MOSAIC framework](#)), using professional judgement. The surveillance team routinely consults with other UK teams and international specialists. Where there are limitations in data or interpreting data, we try to specify and continue work to address them.

### Value

This information contributes to many areas, including response to health threats, public health interventions, healthcare planning and research. There are also society benefits from making this information available, supporting transparency and providing timely access for the scientific community, public health specialists and the public. This in turn reduces the onus on our stakeholders to request information, releasing capacity or further development of our outputs. We aim to present epidemiological and virological data in meaningful and accessible ways to help meet the needs of different audiences. However, we aspire to improve in this, with improved understanding of user-needs. We have also included links to other related reports and resources to avoid duplication of data presentation.

## 10. Links to surveillance reports from other countries

Public Health Wales influenza surveillance webpage: <https://phw.nhs.wales/topics/immunisation-and-vaccines/flu vaccine/weekly-influenza-and-acute-respiratory-infection-report/>

Public Health Wales COVID-19 data dashboard: <https://phw.nhs.wales/topics/latest-information-on-novel-coronavirus-covid-19/>

Public Health Wales interactive report on hospitalisations in influenza and RSV cases: <https://public.tableau.com/app/profile/public.health.wales.health.protection/viz/ARI-Hospitaladmissionsdashboard/ARIHospitaladmissionsdashboard?publish=yes>

NICE influenza antiviral usage guidance: <http://www.nice.org.uk/Guidance/TA158>

England influenza and COVID-19 surveillance: National flu and COVID-19 surveillance reports: 2024 to 2025 season - GOV.UK ([www.gov.uk](http://www.gov.uk))

Scotland seasonal respiratory surveillance: Publications - Public Health Scotland

Northern Ireland influenza surveillance: <https://www.publichealth.hscni.net/directorate-public-health/health-protection/seasonal-influenza>

European Centre for Communicable Disease: <http://ecdc.europa.eu/>

European influenza information: <http://flunewseurope.org/>

Advice on influenza immunisation <https://phw.nhs.wales/topics/immunisation-and-vaccines/flu vaccine/>

Advice on influenza immunisation (for intranet users) Influenza ([sharepoint.com](http://sharepoint.com))

For further information on this report, please email Public Health Wales using: [surveillance.requests@wales.nhs.uk](mailto:surveillance.requests@wales.nhs.uk)